

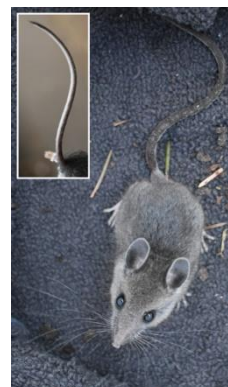
SOME COMMON ANIMALS OF CAPE PERPETUA CAMPGROUND SIUSLAW NATIONAL FOREST, OREGON



Brush Rabbit



Townsend Chipmunk



Deer Mouse



Mouse-eared Bat



Bushytail Woodrat or "Packrat" (rat-sized)



Raccoon



Northern Alligator Lizard (scaly)



Rough-skinned Newt (poisonous skin, no scales)



Coastal Giant Salamander



Garter Snake

ANIMALS OF CAPE PERPETUA CAMPGROUND



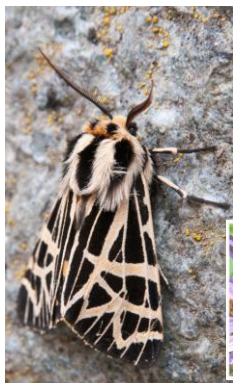
Coastal Cutthroat Trout



Signal Crayfish



Pine White Butterfly



Tiger Moth



Bumblebee



Water Strider



Banana Slug



Roman Snail

Rarely seen: Elk, Deer, Black Bears, Pine Marten, Weasels, Skunks, Moles, Voles and tiny Shrews

This guide will help you recognize creatures you may see in the Campground. Download it free at <http://www.campgroundcritters.com/>

Scientific names:

- Brush Rabbit (*Sylvilagus bachmani*)
- Townsend Chipmunk (*Eutamias townsendi*) white behind ears
- Deer Mouse (*Peromyscus maniculatus*) long, thin, bicolored tail which is dark above and white below
- Mouse-eared Bat (*Myotis* sp.) hides under washroom shingles by day
- Bushytail Woodrat (*Neotoma cinerea*), the local "Packrat"
- Raccoon (*Procyon lotor*)
- Garter Snake (*Thamnophis* sp.), variable colored stripes, harmless
- Northern Alligator Lizard (*Eligaria coerulea*), keeled scales on back, whitish belly with folded flap
- Rough-skinned Newt (*Taricha granulosa*), On land or in water. Very poisonous skin if you somehow ingest it
- Coastal Giant Salamander (*Dicamptodon tenebrosus*) in creek
- Coastal Cutthroat Trout (*Oncorhynchus clarkii*) in creek
- Signal Crayfish (*Pacifastacus leniusculus*) in creek
- Bumblebee (*Bombus* sp.)
- Water Strider (Family *Gerridae*) very abundant, walking on water surface of creek
- Pine White Butterfly (*Neophasia menapia*)
- Tiger Moth (one of the thousands of species of the moth Family *Arctiidae*)
- Banana Slug (*Ariolimax* sp.) probably Pacific Banana Slug (*A. columbianus*)
- Roman Snail (*Helix* sp.) invasive species, native to Europe, where it is human food

Pictures taken in the campground by **Tom Bright, Betty & Fred Massey and Rex & Peg Lavoie**
August 2012