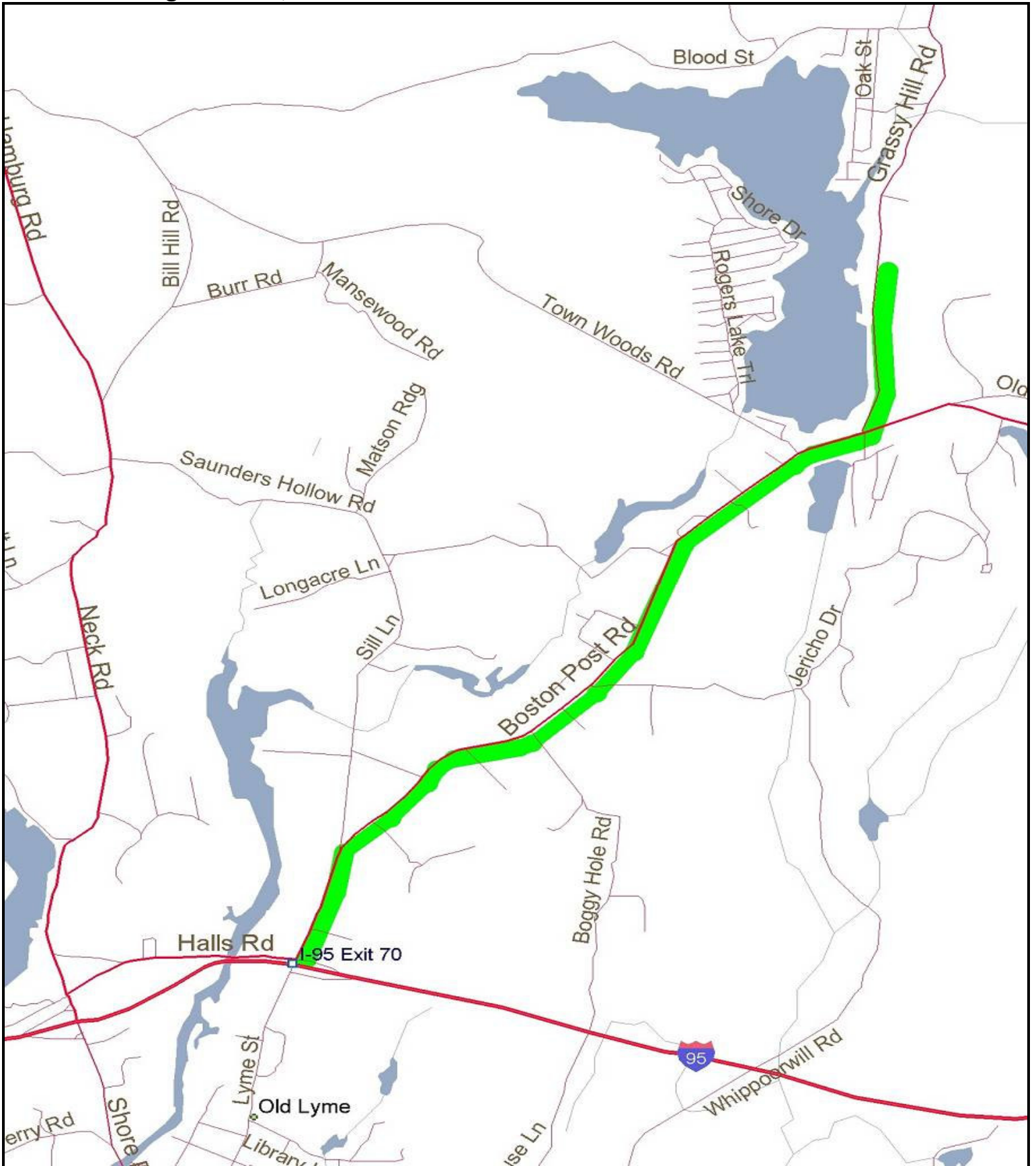


Rogers Lake, CT



Take exit 70 off RT. 95. Left at end of the ramp and under the bridge and right at first light. Take a left at next light and stay on RT. 1 (Boston Post Rd.). Go about 3-1/2 miles until you pass the Laysville center hardware and market on right after the Shoreline family restaurant. The lake is immediately on left after the next left. Parking and launch is from Town Beach at Haines park on left.