

STONE HARBOR

SKYLINE[®]

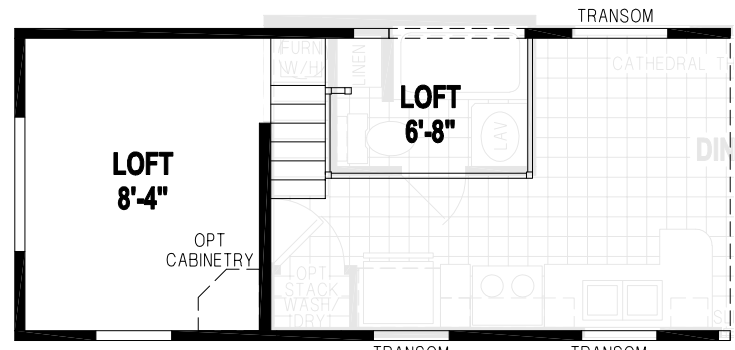
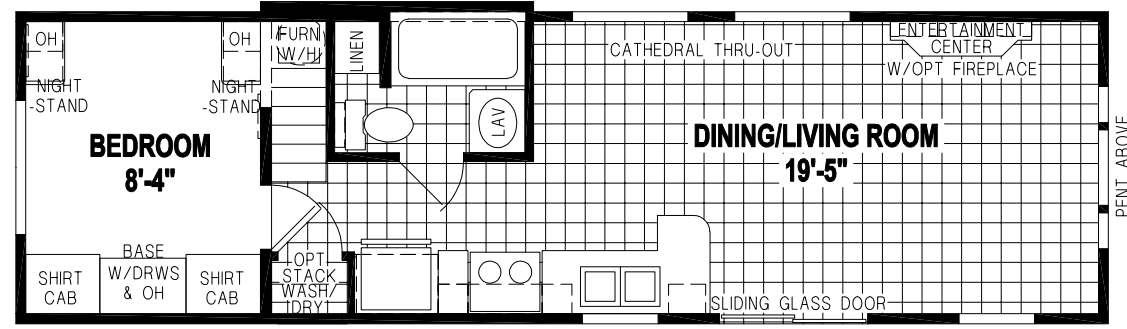


500CTP

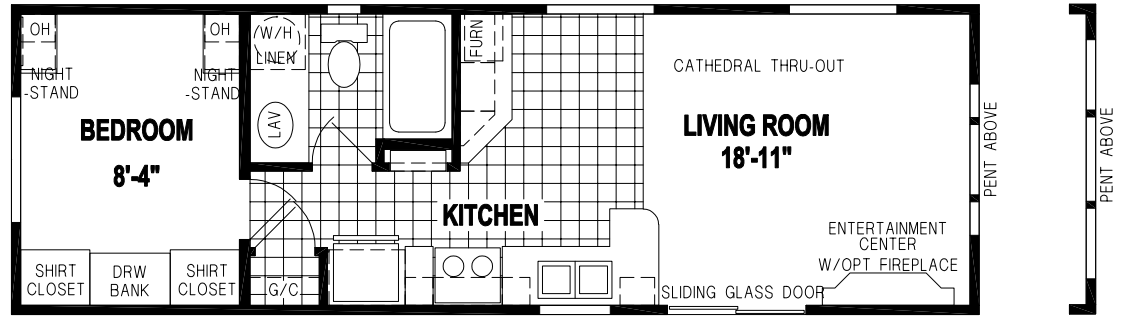
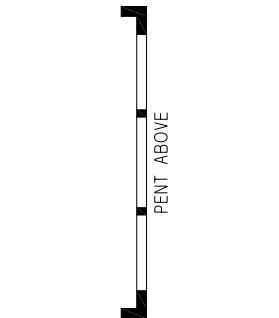
STONE HARBOR 500CTP



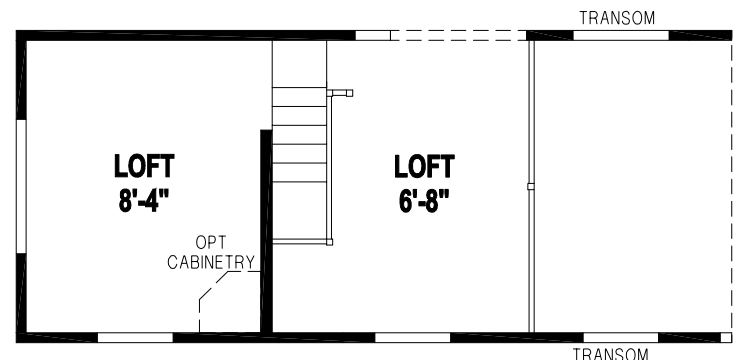
STONE HARBOR 506CTA



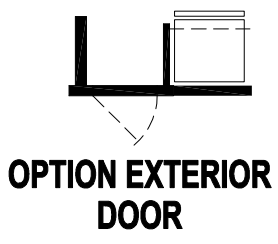
LOFT STORAGE AREA



OPTION ENDWALL WINDOWS



OPTION EXTENDED LOFT STORAGE AREA



STONE HARBOR

STANDARD FEATURES

SKYLINE®

1023 US-61, Lancaster, WI 53813

(608) 723-4171

EXTERIOR & CONSTRUCTION

- ANSI 119.5 Approved
- R-22 Roof Insulation & 30 lb. Roof Trusses
- 25-Year Roof Shingles with Ridge Vent
- Textured Cathedral Ceiling Throughout
- 7'-6" Sidewall Height (Per Floor Plan)
- 2 X 4 Sidewalls – 16" O.C.
- R-11 Wall Insulation
- 2 X 6 Floor Joists – 16" O.C.
- R-14 Floor Insulation
- Insulated Sliding Glass Door
- Detachable Hitch
- Vinyl Lap Siding
- Single Hung Vinyl Low-E Windows

ELECTRICAL

- Exterior GFI Protected Receptacle
- Exterior Light at All Exterior Doors
- LED Interior Lighting Throughout
- Wire/Support for Paddle Fan
- CO/Smoke Detector with Battery Backup/False Alarm Control
- LP Detector
- TV Jacks – Bedroom & Living Areas

HEATING & PLUMBING

- Gas Furnace
- 20-Gallon Electric Water Heater
- PEX Water Lines
- Iron Gas Piping with Shut-Off Valves
- Water Shut-Off Valves (Per Floor Plan)
- Fiberglass Insulated Heating Runs
- Toe-Kick Registers in Kitchen and Bath

INTERIOR

- Carpet – Living Areas and Bedroom (Per Floor Plan)
- Tack Strip, Pad, & Carpet Bar with Carpet Installation
- Cornice Valance with Wood Blinds
- 2-3/4" Large Cove Molding at Ceiling
- Chandelier Dining Light
- Dinette Table with (4) Chairs
- 52" Paddle Fan
- Egress Window(s) in Bedroom
- Queen Bed with Headboard, Bedspread, & (2) Pillow Shams
- Bedroom Nightstands
- 72" Sleeper Sofa
- Ventilated Wire Shelving
- Hardwood Cabinet Doors and Face Frames
- 6-Panel Interior Passage Doors (Per Floor Plan)
- Pre-Finished Door Jambs
- Fire Extinguisher

KITCHEN FEATURES

- 16 Cu. Ft. Frost-Free Refrigerator
- 30" Deluxe Gas Range
- Space-Saver Microwave / Range Vent
- Stainless Steel Sink
- Ceramic Tile Backsplash
- Single-Lever Faucet at Sink with Sprayer
- Hardwood Flat Panel Cabinet Doors and Face Frames
- 2-3/4" Large Cove Molding Above Cabinets
- Two Shelves in Base Cabinet
- Deluxe Cabinet Door and Drawer Hardware
- Full Extension Drawer Guides
- Cabinet Above Refrigerator
- Vinyl Flooring

BATH FEATURES

- Fiberglass Tub Shower with Full Surround (Per Floor Plan)
- Porcelain Sink with Overflow and Pop-Up Drain
- Ceramic Tile Backsplash
- Single-Lever Sink Faucet
- Power Vent Fan with Light (Fan Only on Loft Models)
- Elongated Porcelain Commode
- Hardwood Flat Panel Cabinet Doors and Face Frames
- Privacy Lock on Door
- Towel Bar and Paper Holder
- Vinyl Flooring

Due to continuous product development and improvement, prices, specifications, and materials are subject to change without notice or obligation. Square footage and other dimensions are approximate. Exterior images may be artist renderings and are not intended to be an accurate representation of the home. Renderings, photos and floor plans may be shown with optional features or third-party additions.