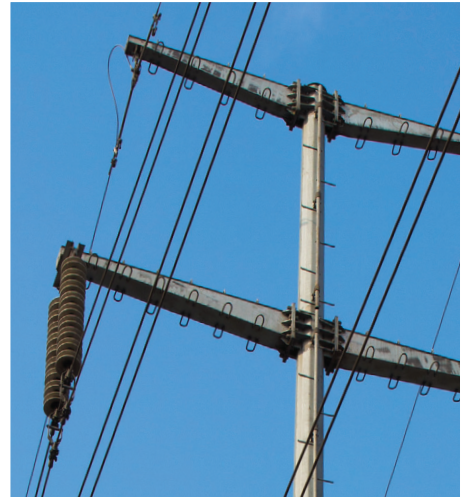


2021 Load & Capacity Data



A report by
The New York
Independent System
Operator, Inc.

Gold Book



Section IV

This section reports proposed projects in the Interconnection Facilities Study stage of the NYISO interconnection process, together with re-ratings, and deactivations. Table IV-1 lists proposed facilities that have completed, are enrolled in, or are candidates to enter a Class Year Interconnection Facilities Study; or have met other comparable milestones. Table IV-2 reports units that have proposed re-ratings. Table IV-3 shows deactivated units that are no longer listed in Existing Capacity Table III-2 and have unexpired CRIS MW. Table IV-4 shows units that remain listed in Table III-2 and that have been deactivated since the publication of the 2020 *Gold Book*. Table IV-5 lists units that have provided a notice of deactivation at some future date. Table IV-6 lists the proposed status changes of simple-cycle combustion turbines to comply with the DEC Peaker Rule. These tables are current through March 15, 2021. Monthly updates to this information are available in the *Generator Status Updates* folder on the *NY Power System Information & Outlook* page:

<https://www.nyiso.com/ny-power-system-information-outlook>.

Table IV-1: Proposed Generator Additions & CRIS Requests (cont'd)

QUEUE POS.	OWNER / OPERATOR	STATION	UNIT	ZONE	Proposed Date ⁶ (M-YY)	NAMEPLATE RATING (MW)	REQUESTED CRIS (MW) ¹	CRIS ¹ (MW)	SUMMER (MW)	WINTER (MW)	UNIT TYPE	CLASS YEAR	NOTES
Future Class Year Candidates⁴ (cont'd)													
925	Hecate Grid Clermont, 1 LLC	Clermont 1		K	Dec-22	100.0	TBD	TBD	100.0	100.0	Energy Storage		
931	Hanwha Energy USA Holdings d/d/a/ 174 Power Global	Astoria Energy Storage		J	Dec-22	100.0	TBD	TBD	100.0	100.0	Energy Storage		
939	National Grid Generation LLC	Far Rockaway Battery Energy Storage		K	Dec-22	30.0	TBD	TBD	30.0	30.0	Energy Storage		
950		Orleans Solar		B	Dec-22	200.0	TBD	TBD	200.0	200.0	Solar		
774	EDF Renewables Development, Inc.	Tracy Solar Energy Centre		E	Jan-23	119.0	TBD	TBD	119.0	119.0	Solar		
956	Holbrook Energy Storage	Holbrook Energy Storage		K	May-23	300.9	TBD	TBD	294.9	296.4	Energy Storage		
957	Holtville Energy Storage	Holtville Energy Storage		K	May-23	79.6	TBD	TBD	76.8	76.8	Energy Storage		
965	Yaphank Energy Storage, LLC	Yaphank Energy Storage		K	May-23	79.6	TBD	TBD	76.8	77.6	Energy Storage		
966	Suffolk County Energy Storage, LLC	Suffolk County Storage		K	May-23	41.3	TBD	TBD	40.3	40.3	Energy Storage		
740	Oakdale Battery Storage LLC	Oakdale Battery Storage		C	Jun-23	120.0	TBD	TBD	120.0	120.0	Energy Storage		
815	Bayonne Energy Center, LLC	Bayonne Energy Center III		J	Jun-23	49.8	TBD	TBD	49.8	49.8	Energy Storage		
805	Osbow Hill Solar, LLC	Owbox Hill Solar		C	Sep-23	140.0	TBD	TBD	140.0	140.0	Solar		
709	Alder Creek Solar, LLC	Alder Creek Solar		E	Oct-23	205.0	TBD	TBD	205.0	205.0	Solar		
717	EDF Renewables Development, Inc.	Morris Ridge Solar Energy Center		C	Oct-23	177.0	TBD	TBD	177.0	177.0	Solar		
995	Alabama Solar Park LLC	Alabama Solar Park LLC		B	Oct-23	132.4	TBD	TBD	130.0	130.0	Solar		
520	EDP Renewables North America	Rolling Upland Wind		E	Nov-23	72.6	TBD	TBD	72.6	72.6	Wind Turbines		
880	Brookside Solar, LLC	Brookside Solar		D	Nov-23	100.0	TBD	TBD	100.0	100.0	Solar		
881	New Breman Solar, LLC	New Breman Solar		E	Nov-23	100.0	TBD	TBD	100.0	100.0	Solar		
882	Riverside Solar, LLC	Riverside Solar		E	Nov-23	100.0	TBD	TBD	100.0	100.0	Solar		
883	North Park Energy, LLC	Garnet Energy Center		B	Nov-23	200.0	TBD	TBD	200.0	200.0	Solar		
522	NYC Energy LLC	NYC Energy		J	Dec-23	79.9	TBD	TBD	79.9	79.9	Energy Storage		
624	Franklin Solar, LLC	Franklin Solar		D	Dec-23	150.0	TBD	TBD	150.0	150.0	Solar		
811	Hecate Energy Cider Solar LLC	Cider Solar		A	Dec-23	500.0	TBD	TBD	500.0	500.0	Solar		
825	Setauket Energy Storage, LLC	Setauket Energy Storage		K	Dec-23	76.9	TBD	TBD	76.9	76.9	Energy Storage		
929	EDF Renewables Development, Inc.	Morris Ridge Battery Storage		C	Dec-23	84.2	TBD	TBD	83.0	83.0	Energy Storage		
953	Sugar Maple Solar, LLC	Sugar Maple Solar		E	Dec-23	150.7	TBD	TBD	150.7	150.7	Energy Storage		
954	Empire Solar, LLC	Empire Solar		A	Dec-23	157.9	TBD	TBD	157.9	150.0	Solar		
766	Sunrise Wind LLC	NY Wind Holbrook		K	May-24	1,085.7	TBD	TBD	880.0	880.0	Wind Turbines		
864	Boralex US Development, LLC	NY38 Solar		E	Mar-24	120.0	TBD	TBD	120.0	120.0	Solar		
971	Savion, LLC	East Setauket Energy Storage		K	Mar-24	300.9	TBD	TBD	293.5	293.5	Energy Storage		
987	Sunrise Wind LLC	NY Wind Holbrook 2		K	May-24	1,085.7	TBD	TBD	44.0	44.0	Wind Turbines		(12)
830	NRG Astoria Storage LLC	Astoria Energy Storage 2		J	Jun-24	79.9	TBD	TBD	79.9	79.9	Energy Storage		
770	KCE NY 8 LLC	KCE NY 8a		G	Oct-24	20.0	TBD	TBD	20.0	20.0	Energy Storage		
859	EDF Renewables Development, Inc.	Ridge View Solar Energy Center		A	Oct-24	350.0	TBD	TBD	350.0	350.0	Solar		
860	EDF Renewables Development, Inc.	Rosalen Solar Energy Center		E	Oct-24	350.0	TBD	TBD	350.0	350.0	Solar		
686	Inveney Solar Development North America LLC	Bull Run Solar Energy Center		D	Dec-24	170.0	TBD	TBD	170.0	170.0	Solar		
800	EDF Renewables Development, Inc.	Rich Road Solar Energy Center		E	Dec-24	240.0	TBD	TBD	240.0	240.0	Solar		
700	Able Grid Energy Solutions, LLC	Robinson Grid		J	Jul-25	300.0	TBD	TBD	300.0	300.0	Energy Storage		
958	Empire Offshore Wind LLC	El Oceanside		K	Dec-25	1,568.0	TBD	TBD	1,000.0	1,000.0	Wind Turbines		
959	Empire Offshore Wind LLC	El Oceanside 2		K	Dec-25	1,568.0	TBD	TBD	500.0	500.0	Wind Turbines		(13)
526	Atlantic Wind, LLC	North Ridge Wind		D	Dec-25	100.0	TBD	TBD	100.0	100.0	Wind Turbines		
560	Atlantic Wind, LLC	Deer river Wind		E	Dec-25	100.0	TBD	TBD	100.0	100.0	Wind Turbines		
574	Atlantic Wind, LLC	Mad River Wind		E	Dec-25	450.0	TBD	TBD	450.0	450.0	Wind Turbines		

Notes for Table IV-1: Proposed Generator Additions & CRIS Requests

1	"Requested CRIS" values reflect the Summer CRIS MW initially requested in the current Class Year Deliverability Study. "CRIS" values reflect the Summer CRIS MW deemed deliverable. See Definitions of Labels on Load & Capacity Schedule (Sec. V) for description.
2	Projects included as expected additions in this year's Load and Capacity Schedule, Table V-2a & V-2b.
3	Projects that are members of the ongoing Class Year 2019 Additional SDU Study. These projects are included as proposed resource changes in this year's Load and Capacity Schedule, Table V-2a.
4	Projects that are potential candidates for Class Year 2021, i.e., Large Generating Facilities with Operating Committee approved System Reliability Impact Studies and Small Generating Facilities that have completed a comparable milestone and for which non-Local System Upgrade Facilities are required.
5	Small Generating Facilities that are not subject to a Class Year Study but have an executed Small Generator Facilities Study Agreement.
6	For projects in this Table, this date is the proposed Commercial Operation Date. These dates are proposed to the NYISO by the Developer and are typically updated throughout the interconnection study process and throughout project development, to the extent permitted by Attachments X and Z to the OATT.
7	Q#393 Berrians East Replacement is a repowering project that would include retiring NRG GIs 2, 3, and 4 (PTIDs 24094 through 24105). The Q#393 Berrians East Replacement, as proposed, will have a total ERS capability of 431 MW (Summer) and 438 MW (Winter) and CRIS (Summer) of 508 MW (3.6 MW Summer CRIS increase).
8	Q#778 Gowanus Gas Turbine Facility Repowering is a repowering project that would include retiring Eastern Generation Gowanus Barges# 1, 2, 3, and 4 (PTIDs 24077 through 24080, 24084, 24111 through 24137). The Q#778 Gowanus Gas Turbine Facility Repowering, as proposed, will have a total ERS capability of 549 MW (Summer) and 588 MW (Winter) and CRIS (Summer) of 578.4 MW (CRIS transfer at same location).
9	Q#791 Danskammer Energy Center is a repowering project that would include retiring Danskammer units# 1, 2, 3, and 4 (PTIDs 23586 and 23589 through 23591). The Q#791 Danskammer Energy Center, as proposed, will have a total ERS capability of 595.5 MW (Summer) and 600.0 MW (Winter) and CRIS (Summer) of 600.0 MW (88.9 MW Summer CRIS increase).
10	Projects obtain CRIS via Class Year 2019
11	Projects obtain CRIS via Expediated Deliverability Study 2020-01
12	Q#987 is a 44 MW uprate of Q#766.
13	Q#959 is a 500 MW uprate of Q#958.