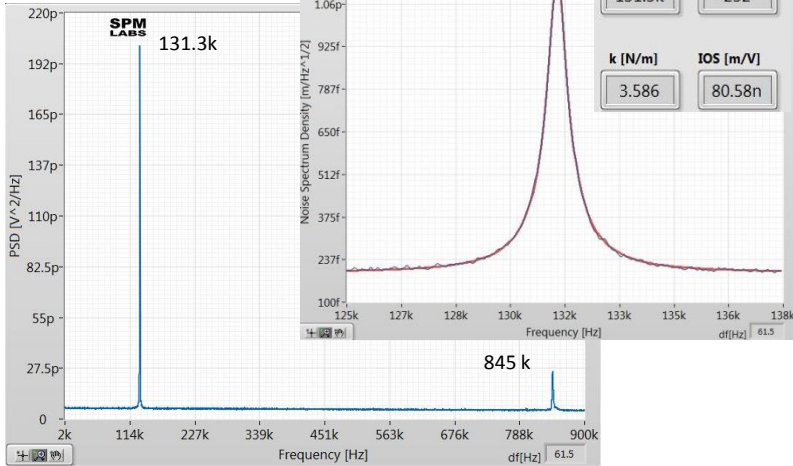
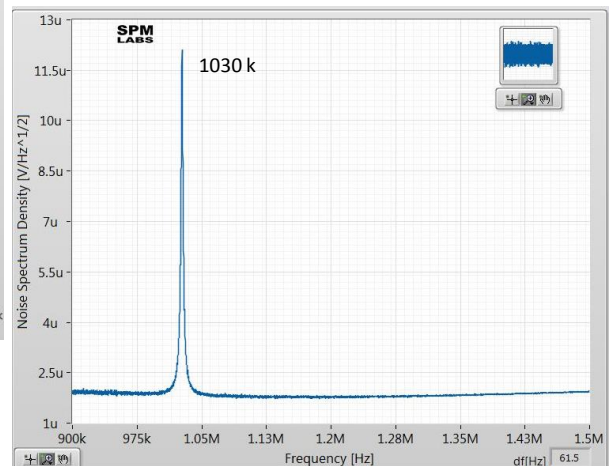


*Thermal Tune Data obtained with DCC accessory*

**Normal Deflection**



**Lateral Deflection**



The 125/35/2 Si probe can be used in AM-PI measurements with a moderate increase of the tip-force, Such an experiment is demonstrated below in imaging of spoke-wheel macromolecules deposited on mica substrate. The macromolecules are spread on the substrate one of them was examined at low and high tip-forces. At low-force the macromolecules emerged from the center are seen as homogeneous strands of ~2nm in height. As the tip-force was raised by setting  $A_{sp} \sim 0.5A_0$ , the sub-structure of the macromolecules which are formed by rigid core and softer side chains, became visible in height and phase images.

