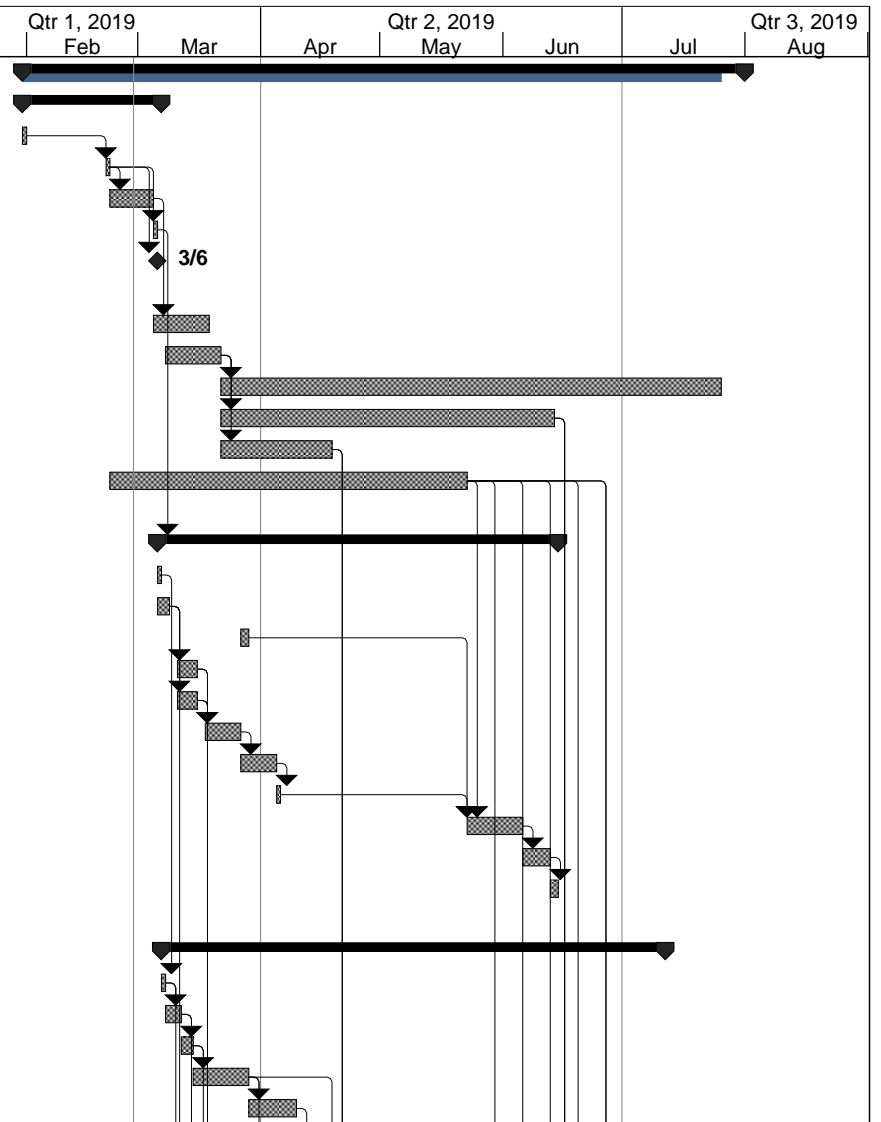


| ID | Task Name | Baseline Start | Baseline Finish | Duration | Start | Finish | Predecessors | Dec | Jan | Qtr 1, 2019 Feb | Mar | Qtr 2, 2019 Apr | May | Jun | Qtr 3, 2019 Jul | Aug |
|----|--|----------------|-----------------|----------|-------------|-------------|--------------|-----|-----|--------------------|-----|--------------------|-----|-----|--------------------|-----|
| 1 | CTE- INFRASTRUCTURE ENHANCEMENT | Thu 1/31/19 | Wed 7/31/19 | 130 days | Thu 1/31/19 | Wed 7/31/19 | | | | | | | | | | |
| 2 | Contract Preparation | Thu 1/31/19 | Wed 3/6/19 | 25 days? | Thu 1/31/19 | Wed 3/6/19 | | | | | | | | | | |
| 3 | Bid Openning | Thu 1/31/19 | Thu 1/31/19 | 1 day? | Thu 1/31/19 | Thu 1/31/19 | | | | | | | | | | |
| 4 | Project Award | Thu 2/21/19 | Thu 2/21/19 | 1 day? | Thu 2/21/19 | Thu 2/21/19 | 3 | | | | | | | | | |
| 5 | Contract and Insurance | Fri 2/22/19 | Mon 3/4/19 | 7 days | Fri 2/22/19 | Mon 3/4/19 | 4 | | | | | | | | | |
| 6 | Award by Board Action | Tue 3/5/19 | Tue 3/5/19 | 1 day | Tue 3/5/19 | Tue 3/5/19 | 4 | | | | | | | | | |
| 7 | NTP | Wed 3/6/19 | Wed 3/6/19 | 1 day | Wed 3/6/19 | Wed 3/6/19 | 4 | | | | | | | | | |
| 8 | | | | | | | | | | | | | | | | |
| 9 | Submittals | Tue 3/5/19 | Mon 3/18/19 | 10 days | Tue 3/5/19 | Mon 3/18/19 | 5 | | | | | | | | | |
| 10 | Review and Approval | Fri 3/8/19 | Thu 3/21/19 | 10 days | Fri 3/8/19 | Thu 3/21/19 | | | | | | | | | | |
| 11 | Lead Time for Light Fixtures | Fri 3/22/19 | Thu 7/25/19 | 90 days | Fri 3/22/19 | Thu 7/25/19 | 10 | | | | | | | | | |
| 12 | Lead Time for Doors and Hardwares | Fri 3/22/19 | Thu 6/13/19 | 60 days | Fri 3/22/19 | Thu 6/13/19 | 10 | | | | | | | | | |
| 13 | Lead Time for Door Frames | Fri 3/22/19 | Thu 4/18/19 | 20 days | Fri 3/22/19 | Thu 4/18/19 | 10 | | | | | | | | | |
| 14 | Lead Time for Kitchen Equipments | Fri 2/22/19 | Wed 5/22/19 | 64 days | Fri 2/22/19 | Wed 5/22/19 | | | | | | | | | | |
| 15 | | | | | | | | | | | | | | | | |
| 16 | Edison H.S. Culinary Arts | Wed 3/6/19 | Fri 6/14/19 | 73 days? | Wed 3/6/19 | Fri 6/14/19 | 6 | | | | | | | | | |
| 17 | Safe off | Wed 3/6/19 | Wed 3/6/19 | 1 day? | Wed 3/6/19 | Wed 3/6/19 | | | | | | | | | | |
| 18 | Demo | Wed 3/6/19 | Fri 3/8/19 | 3 days | Wed 3/6/19 | Fri 3/8/19 | | | | | | | | | | |
| 19 | Kitchen Field Measurements | Wed 3/27/19 | Thu 3/28/19 | 2 days | Wed 3/27/19 | Thu 3/28/19 | | | | | | | | | | |
| 20 | Rough Electrical | Mon 3/11/19 | Fri 3/15/19 | 5 days | Mon 3/11/19 | Fri 3/15/19 | 18 | | | | | | | | | |
| 21 | Rough Plumbing | Mon 3/11/19 | Fri 3/15/19 | 5 days | Mon 3/11/19 | Fri 3/15/19 | 18 | | | | | | | | | |
| 22 | Patch and Paint | Mon 3/18/19 | Tue 3/26/19 | 7 days | Mon 3/18/19 | Tue 3/26/19 | 20,21 | | | | | | | | | |
| 23 | Flooring | Wed 3/27/19 | Thu 4/4/19 | 7 days | Wed 3/27/19 | Thu 4/4/19 | 22 | | | | | | | | | |
| 24 | Base - Flooring | Fri 4/5/19 | Fri 4/5/19 | 1 day | Fri 4/5/19 | Fri 4/5/19 | 23 | | | | | | | | | |
| 25 | Kitchen Equipments and Fixtures | Thu 5/23/19 | Wed 6/5/19 | 10 days | Thu 5/23/19 | Wed 6/5/19 | 14,19,24 | | | | | | | | | |
| 26 | Finish - Plumbing and Electrical | Thu 6/6/19 | Wed 6/12/19 | 5 days | Thu 6/6/19 | Wed 6/12/19 | 25 | | | | | | | | | |
| 27 | Clean Up | Thu 6/13/19 | Fri 6/14/19 | 2 days | Thu 6/13/19 | Fri 6/14/19 | 26 | | | | | | | | | |
| 28 | | | | | | | | | | | | | | | | |
| 29 | Edison H.S. Digital Media | Thu 3/7/19 | Thu 7/11/19 | 91 days? | Thu 3/7/19 | Thu 7/11/19 | | | | | | | | | | |
| 30 | Safe off | Thu 3/7/19 | Thu 3/7/19 | 1 day? | Thu 3/7/19 | Thu 3/7/19 | 17 | | | | | | | | | |
| 31 | Soft Demo | Fri 3/8/19 | Mon 3/11/19 | 2 days | Fri 3/8/19 | Mon 3/11/19 | 30 | | | | | | | | | |
| 32 | Hard Demo | Tue 3/12/19 | Thu 3/14/19 | 3 days | Tue 3/12/19 | Thu 3/14/19 | 31 | | | | | | | | | |
| 33 | Framing | Fri 3/15/19 | Thu 3/28/19 | 10 days | Fri 3/15/19 | Thu 3/28/19 | 32 | | | | | | | | | |
| 34 | Rough Electrical | Fri 3/29/19 | Tue 4/9/19 | 8 days | Fri 3/29/19 | Tue 4/9/19 | 33 | | | | | | | | | |



| | | | | | | | | |
|--|-----------------|--|--------------------|--|-----------------------|--|--------------------|--|
| Project: CTE - Preliminary Schedule Date: Thu 2/28/19 | Task | | External Milestone | | Duration-only | | External Milestone | |
| | Split | | Inactive Task | | Manual Summary Rollup | | Progress | |
| | Milestone | | Inactive Milestone | | Manual Summary | | Deadline | |
| | Summary | | Inactive Milestone | | Start-only | | | |
| | Project Summary | | Inactive Summary | | Finish-only | | | |
| | External Tasks | | Manual Task | | External Tasks | | | |

| ID | Task Name | Baseline Start | Baseline Finish | Duration | Start | Finish | Predecessors | 2019 | | | | | | | | | |
|----|--|------------------------|--------------------|-----------------|--------------------|--------------------|--------------|------|-----|--------------------|-----|-----|--------------------|-----|-----|--------------------|--|
| | | | | | | | | Dec | Jan | Qtr 1, 2019 Feb | Mar | Apr | Qtr 2, 2019 May | Jun | Jul | Qtr 3, 2019 Aug | |
| 35 | Patch Concrete Floor | Wed 4/10/19 | Fri 4/12/19 | 3 days | Wed 4/10/19 | Fri 4/12/19 | 34 | | | | | | | | | | |
| 36 | HVAC Ducts & Connections | Fri 3/29/19 | Thu 4/4/19 | 5 days | Fri 3/29/19 | Thu 4/4/19 | 33 | | | | | | | | | | |
| 37 | Install Door Frames | Fri 4/19/19 | Fri 4/19/19 | 1 day? | Fri 4/19/19 | Fri 4/19/19 | 13,33 | | | | | | | | | | |
| 38 | Drywall | Mon 4/22/19 | Fri 5/3/19 | 10 days | Mon 4/22/19 | Fri 5/3/19 | 37 | | | | | | | | | | |
| 39 | Doors and Hardware | Fri 6/14/19 | Tue 6/18/19 | 3 days | Fri 6/14/19 | Tue 6/18/19 | 38,12 | | | | | | | | | | |
| 40 | Patch and Paint | Wed 6/19/19 | Tue 6/25/19 | 5 days | Wed 6/19/19 | Tue 6/25/19 | 38,39 | | | | | | | | | | |
| 41 | Flooring - Repair | Wed 6/26/19 | Tue 7/2/19 | 5 days | Wed 6/26/19 | Tue 7/2/19 | 40 | | | | | | | | | | |
| 42 | Finish - Electrical & HVAC | Wed 7/3/19 | Tue 7/9/19 | 5 days | Wed 7/3/19 | Tue 7/9/19 | 41 | | | | | | | | | | |
| 43 | Clean Up | Wed 7/10/19 | Thu 7/11/19 | 2 days | Wed 7/10/19 | Thu 7/11/19 | 42 | | | | | | | | | | |
| 44 | | | | | | | | | | | | | | | | | |
| 45 | Huntington Beach H.S. Culinary Arts | Fri 3/8/19 | Thu 6/20/19 | 75 days? | Fri 3/8/19 | Thu 6/20/19 | | | | | | | | | | | |
| 46 | Safe off | Fri 3/8/19 | Fri 3/8/19 | 1 day? | Fri 3/8/19 | Fri 3/8/19 | 30 | | | | | | | | | | |
| 47 | Demo | Mon 3/11/19 | Wed 3/13/19 | 3 days | Mon 3/11/19 | Wed 3/13/19 | 18 | | | | | | | | | | |
| 48 | Kitchen Field Measurements | Wed 3/27/19 | Thu 3/28/19 | 2 days | Wed 3/27/19 | Thu 3/28/19 | | | | | | | | | | | |
| 49 | Rough Electrical | Mon 3/18/19 | Fri 3/22/19 | 5 days | Mon 3/18/19 | Fri 3/22/19 | 47,20 | | | | | | | | | | |
| 50 | Rough Plumbing | Mon 3/18/19 | Fri 3/22/19 | 5 days | Mon 3/18/19 | Fri 3/22/19 | 47,21 | | | | | | | | | | |
| 51 | Patch and Paint | Mon 3/25/19 | Tue 4/2/19 | 7 days | Mon 3/25/19 | Tue 4/2/19 | 49,50 | | | | | | | | | | |
| 52 | Flooring | Wed 4/3/19 | Thu 4/11/19 | 7 days | Wed 4/3/19 | Thu 4/11/19 | 51 | | | | | | | | | | |
| 53 | Base - Flooring | Fri 4/12/19 | Fri 4/12/19 | 1 day | Fri 4/12/19 | Fri 4/12/19 | 52 | | | | | | | | | | |
| 54 | Kitchen Equipments and Fixtures | Thu 5/30/19 | Wed 6/12/19 | 10 days | Thu 5/30/19 | Wed 6/12/19 | 53,14,48 | | | | | | | | | | |
| 55 | Finish - Plumbing and Electrical | Thu 6/13/19 | Tue 6/18/19 | 4 days | Thu 6/13/19 | Tue 6/18/19 | 54 | | | | | | | | | | |
| 56 | Clean Up | Wed 6/19/19 | Thu 6/20/19 | 2 days | Wed 6/19/19 | Thu 6/20/19 | 55 | | | | | | | | | | |
| 57 | | | | | | | | | | | | | | | | | |
| 58 | Huntington Beach H.S. Photo Lab | Thu 1/31/19 | Fri 7/5/19 | 85 days? | Mon 3/11/19 | Fri 7/5/19 | | | | | | | | | | | |
| 59 | Safe Off | Mon 3/11/19 | Mon 3/11/19 | 1 day? | Mon 3/11/19 | Mon 3/11/19 | 46 | | | | | | | | | | |
| 60 | Soft Demo | Tue 3/12/19 | Thu 3/14/19 | 3 days | Tue 3/12/19 | Thu 3/14/19 | 31 | | | | | | | | | | |
| 61 | Hard Demo | Fri 3/15/19 | Tue 3/19/19 | 3 days | Fri 3/15/19 | Tue 3/19/19 | 32 | | | | | | | | | | |
| 62 | Wall Framming | Mon 3/18/19 | Fri 3/22/19 | 5 days | Mon 3/18/19 | Fri 3/22/19 | | | | | | | | | | | |
| 63 | Rough Electrical | Mon 3/25/19 | Fri 4/5/19 | 10 days | Mon 3/25/19 | Fri 4/5/19 | 62 | | | | | | | | | | |
| 64 | Patch Concrete Floor | Mon 4/8/19 | Wed 4/10/19 | 3 days | Mon 4/8/19 | Wed 4/10/19 | 63 | | | | | | | | | | |
| 65 | HVAC Ducts & Connections | Fri 3/15/19 | Thu 3/21/19 | 5 days | Fri 3/15/19 | Thu 3/21/19 | 60 | | | | | | | | | | |
| 66 | Install Door Frames | Fri 4/19/19 | Fri 4/19/19 | 1 day? | Fri 4/19/19 | Fri 4/19/19 | 13,62 | | | | | | | | | | |
| 67 | Drywall | Mon 4/22/19 | Tue 4/30/19 | 7 days | Mon 4/22/19 | Tue 4/30/19 | 66 | | | | | | | | | | |
| 68 | Photo Display Showcase | Wed 5/1/19 | Tue 5/7/19 | 5 days | Wed 5/1/19 | Tue 5/7/19 | 67 | | | | | | | | | | |

| | | | | | | | | |
|--|-----------------|--|--------------------|--|-----------------------|--|--------------------|--|
| Project: CTE - Preliminary Schedule Date: Thu 2/28/19 | Task | | External Milestone | | Duration-only | | External Milestone | |
| | Split | | Inactive Task | | Manual Summary Rollup | | Progress | |
| | Milestone | | Inactive Milestone | | Manual Summary | | Deadline | |
| | Summary | | Inactive Milestone | | Start-only | | | |
| | Project Summary | | Inactive Summary | | Finish-only | | | |
| | External Tasks | | Manual Task | | External Tasks | | | |

