

## *The Bullard Memorial Farm Association Newsletter*



7 Bullard Lane  
Holliston, MA 01746  
Since 1658



### **Happy Winter, BMFA members!**

Where did 2016 go? It seems like just last month we were celebrating the BMFA's 100th birthday, but that was in July! Here it is January, 2017 — winter in a new year.

There have been several events at the Farm since the Fall issue of the BMFA newsletter, and they are highlighted in the pages that follow.

The quote above is just a gentle reminder to treat each other, the planet and ourselves with kindness and respect—a little kindness goes a long way.

As always, please feel free to send me any content for future newsletters at [cemacd@maine.rr.com](mailto:cemacd@maine.rr.com).

**Enjoy!**

### **BMFA Fall Meeting Recap**

*October 1, 2016*

32 BMFA members attended the Fall meeting on October 1, which represented a quorum. Unfortunately, I was unable to attend the meeting, so I don't have photos to share or descriptions of the yummy pot luck dishes that were shared.

That said, I've pulled meeting highlights from the Clerk Flynn's meeting minutes:

- Four new directors were elected to the Board for a three-year term, ending in October, 2019: Scott Hills, George Fiske, Chip Thurlow, and Peter B. Hood.
- Elected for a three-year term to serve on the respective standing committees were: Suzanne Schaffer and Melissa Audier, House Committee; Scott Hills and Doug Hathaway, Grounds Committee; Elizabeth Frohmader, Audit Committee; and Tad Hills, Nominating Committee.
- Welcome to our seven new Bronze members (thanks to the recruitment efforts of Melissa Audier!): Mary and Will Blake, Jessica and Edward Petrush, Lauren and Adam McClain, and Cecilia McVey
- Brent Sutter was promoted to Gold member status, and Joel and Sue Sherman were voted in as Gold members—Welcome Joel and Sue!
- The Clerk reported the following births:
  - ♦ Sloane Alexandra Spurway was born on September 11, 2016 to Kevin and Katherine Spurway

- ◆ Bethany Anita Kreyling was born on July 5, 2016 to Joanna and Eric Kreyling in Columbia, South Carolina
- ◆ Louis Clifford Jensen was born on August 28, 2016 to Tiffany and Phillip Jensen in Cincinnati, Ohio
- A moment of silence was held for the following deaths:
  - ◆ Steven Kull: Steven was previously married to Kathryn Korneth Kull and is the father of Kathryn Lynne Kull-Burst & Steven Kull III
  - ◆ Henry Cameron Adams: Henry is the brother of Charles Clark Adams and John Ellison Adams, deceased Bullard farm members. Henry passed away on June 7, 2016 while living in Malaysia. He had served several terms as President of the Bullard Memorial Farm Association.
- The 2017 Association meeting schedule was voted on: Saturday, June 3, and Saturday, October 7.

## **New Section: Directors' Update**

Submitted by Jay McFarland

Greetings and Happy New Year!

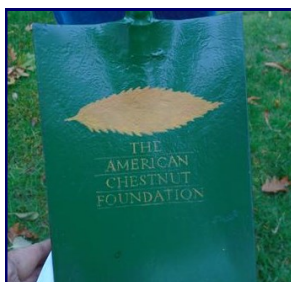
The directors will meet at the Farm on February 4<sup>th</sup> to discuss the usual Farm business, such as grounds, finances, improvements and maintenance, as well as future programs and events. We would love to hear from you, our members, and encourage you to send us any and all input and feedback for discussion. This will comprise the new Directors' Update section in all future issues of the newsletter. So speak up--let your voices be heard! All discussion items/topics will be highlighted in the next issue of the newsletter.

Enjoy the winter, wherever you are!

## **American Chestnut Tree Planting**

Submitted by Chip Thurlow

Through an exciting partnership with the American Chestnut Foundation – RI/MA Chapter (TACF) - a group of seven BMFA directors and members participated in the reestablishment of five American Chestnut Trees at the Bullard Memorial Farm on November 5, 2016.



The BMFA's responsibility is to periodically monitor the trees, water as necessary and report any problems to the ACF staff. The site is in the existing area where our Chinese Chestnut Trees are already planted. There is no problem with cross pollination as these seedlings, as they develop seed pods, will not be used for new seedlings. If we are successful, we can consider another planting in the apple orchard that could be used to develop a long term seed orchard.



The following is a piece written by Bobby Blair for the Holliston Reporter:

*The frost was still on the pumpkins Saturday morning when members of the Bullard Memorial Farm (BMF) and the American Chestnut Foundation (TACF) gathered in the barn at the farm. Located just off Central Street on Bullard*

*Lane, the farm was first settled in 1652.*

*The project, organized by Chip Thurlow (2nd from*

*left) a member of the Board of Directors at BMF, would be the planting of five chestnut trees. A blight in the early 1900s all but wiped out the American Chestnut trees from Maine to Mississippi. BMF had 268 Chinese Chestnut trees back in 1926, but only several survive on the property today.*

*The trees being planted on Saturday have been backcross bred and are sixth generation trees which have eliminated the poor qualities in the Chinese trees making them 94% American and 6% Chinese, but still blight resistant.*

*Volunteers made metal cages which would be lowered into freshly dug new homes for the Chestnut trees to deter moles from chomping on the tender roots. The cage would also protect the newly emerging leaves in the spring from deer.*





*Ironically, it is the deer, along with other wildlife, that are the biggest fans of the chestnuts. The trees will begin producing nuts in 3-5 years. Deer are known to favor chestnuts 100 to 1 over acorns.*

## **Holiday Centerpiece Workshop**

*December 4, 2016*

The second annual Holiday Centerpiece Workshop was held at the Farm on Sunday, December 4, 2016, and was led by Bev Carney. A group of 17 women gathered in the barn on this chilly winter day to try their hand at a little creativity.

A fire crackled in the fireplace and the scent of spruce, white pine, cedar and bayberry filled the barn



as folks worked on their centerpieces. Each participant was given a plastic base with a foam block and a choice of two red or white candles. Also supplied were embellishments such as artificial berries, silver or gold globes, ribbon, and more.

Bev gave instruction related to the best method to build the evergreen base of the centerpiece, as well as how to work with the embellishments.

A fun time was had by all who attended, and everyone was happy to bring home the wonderful scent of the holidays in the form of a beautiful centerpiece.



## **Historic 1873 Bullard Farm Survey (Re)Discovered**

*Submitted by Chip Thurlow*

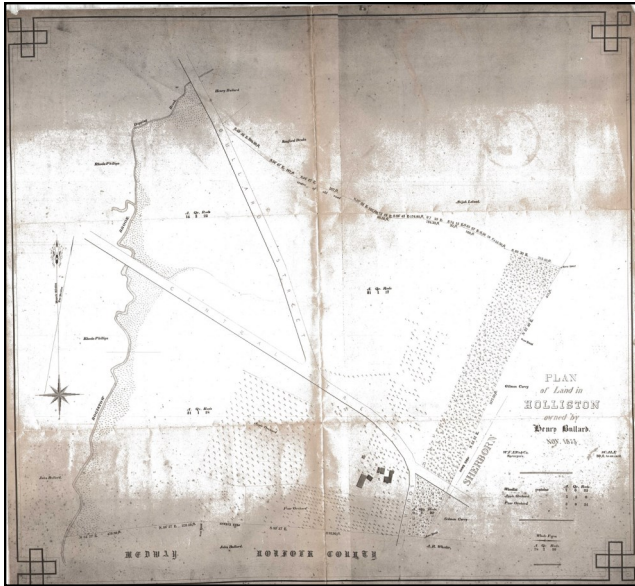
I spent a significant amount of time in November and December sorting through the many files and folders of Bullard documents that I have accumulated over the past 20+ years. Some of the files were given to me by Jack Kingsbury when I assumed the Presidency from him in 1995. Included in those boxes were files from Henry Adams when he was President in the 1980s. My intention has been to sort out duplicates of documents and bring the remaining files and folders to the Farm for storage.

Many documents have been electronically stored, so we don't need huge amounts of paper to document the workings of the BMFA. However, it is important to retain documents that describe and document the history of our efforts to preserve and improve the Bullard Memorial Farm, especially prior to electronic storage. For example, our efforts to seek approval for the solar panel project, the two separate Conservation Restriction Agreement efforts and the many strategic planning meetings over the years. We have documents for the maintenance and repairs to the Farm buildings such as replacing the furnace, repairing the floor in the barn, the horse treadmill excavation (thanks to Ned and Charlie Kingsbury), painting projects (lead abatement anyone?), building the cottage, John Anson Bullard Trust records and probate court documents, etc. There are House, Grounds, Cemetery, Treasurer and Long Range Planning Reports. We have Farm Caretaker/Manager reports that provide a detailed review of the extensive work and devotion they collectively performed over the past 100 years! There are so many documents that describe the extraordinary efforts by so many BMFA members to preserve the history, buildings and grounds of the Bullard Memorial Farm.

The many hours I spent reviewing and organizing files and folders was time consuming and enriching. I generated 44 pounds of mostly duplicate documents that I had shredded at FedEx. I did not shred any important BMFA documents.

*(Continued next page)*

**One treasure appeared in an old file from Henry Adams: an original survey of the Henry Bullard farm conducted in 1873 (from a copy made in 1930)!**

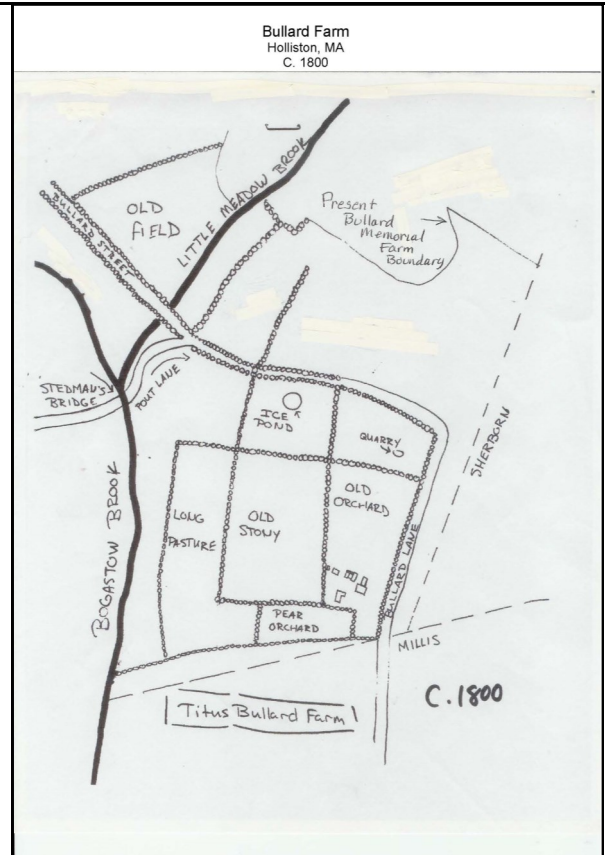
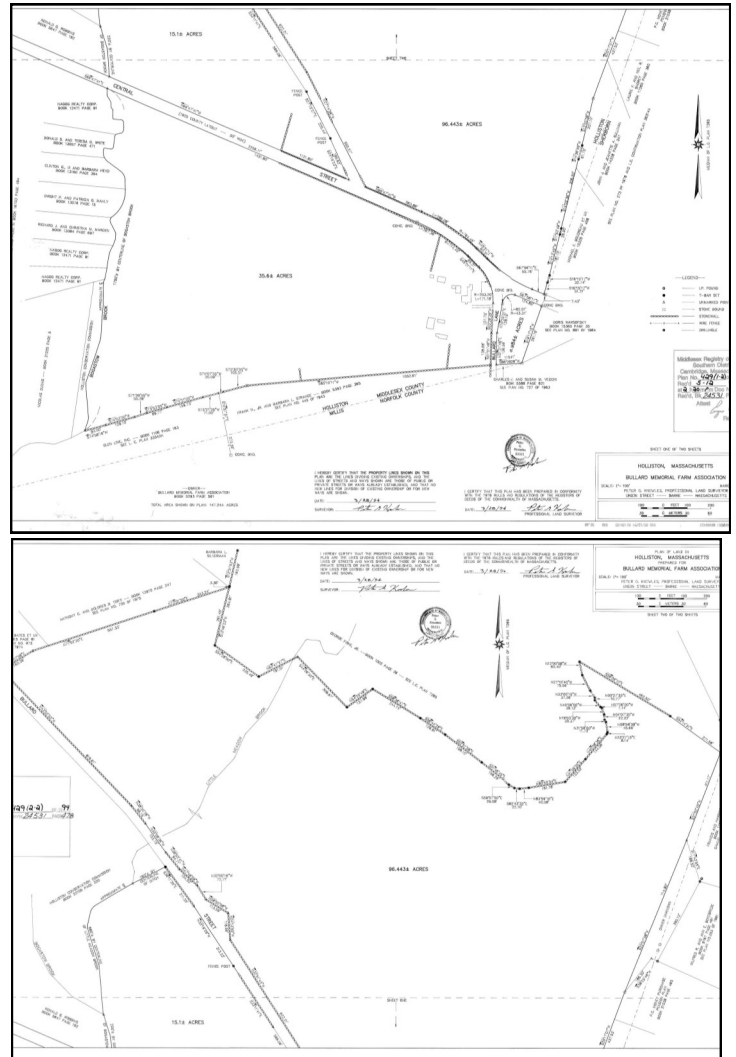


*Henry Bullard Farm, circa 1873 (copy made in 1930)*

The apple and pear orchards are documented. The survey marks are documented. The buildings are documented, except the Vinegar building was not present! A second building, now missing, is next to the corn barn/library. And a small building appears to be the Blacksmith Shop next to what is now the parking area. **Surprisingly, the dimensions of the farm at that time were very different from the survey maps we commissioned in 1994 (images, albeit difficult to read, to the right).**

The entire north section beyond the old road in the woods from Holliston to Sherborn is the northern boundary on this 1873 survey! At some time after 1873, Henry must have purchased land beyond that road, adding significantly to the current footprint of the Bullard Farm. We can compare the two surveys to see how the dimensions of the Bullard Farm have changed over the years.

There are also two hand drawn maps depicting the Bullard Farm in 1800 and 1870. These two drawings show the land beyond the old Holliston/Sherborn road as not clearly Bullard property.



*(Continued next page)*



**This is a great opportunity for anyone interested in researching the possibly purchased lots so we can all better understand how the current dimensions of the Bullard Memorial Farm came to be as they are today.** Interested in exploring town records to discover when and from whom the purchases were made? The owners of those lots are listed in the 1873 survey. (Please review the list of the file categories below and reach out to Chip Thurlow at [ThurlowCP@aol.com](mailto:ThurlowCP@aol.com) if interested in reviewing documents or researching them further.)

#### Contents of Bullard Memorial Farm Association Historic Files

Bullard Memorial Farm Association History; Past Presidents Files  
Historic Documents/Historic Organizations/College and University Affiliations  
National Register Designation  
BMFA Bylaws (Current and Obsolete)  
Committees of the BMFA  
House  
Grounds and Forestry Planning  
Finance/Treasurer/Investments  
Cemetery  
Minutes of Meetings  
Property Insurance  
Property Appraisal and Property Taxes  
Property Surveys and Drawings – 1800, 1870, 1873 Survey, 1994 Survey  
Maintenance Reports  
Lead Abatement/Cottage Construction  
Farm Caretakers/Farm Managers  
Job Description  
Hiring Process  
Reports for BMFA  
Consultation to BMFA - Resumes and Reports  
Strategic Planning/Long Range Planning  
Bullard Farm Preservation Society Proposal  
501(c)(3) Public Charity Proposal  
Threats to the BMFA/Bullard Memorial Farm  
Algonquin Pipe Line Project Proposal  
Charles River Sewer Project Proposal  
Open House: 2003 & 2005  
BMFA Land Use Projects:  
Community Gardens  
Bee Keeping  
Hay Field Mowing  
Solar Panel Project Proposal  
Pony Barn Proposal – 1990's (Horse Barn for Martha)  
New Barn Proposal – 1990's (Artifact Study and Storage)  
Conservation Restriction Agreement Proposals – 2006-2008 & 2013  
Restoration Projects  
Blacksmith Shop  
Horse Treadmill  
Holliston Neighbors – Glen Ellen; Abutters



Sunset over the BMF Barn by Suzanne McFarland, 1/26/17

## Bullard Reunion in California

Submitted by Suzanne McFarland

On January 7, 2017, 11 Bullards and extended family met at Carolyn Bullard's new restaurant, Italian Pizza Kitchen in Reseda, CA. She served us a delicious meal and we took over the entire restaurant.



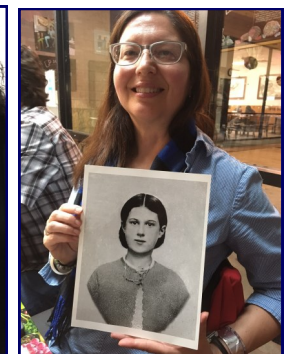
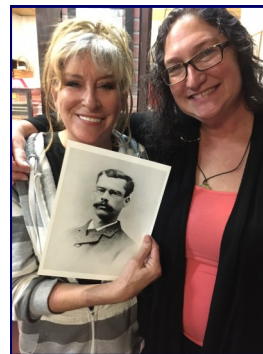
Durinda Wood brought images of the seven ancestors so that we could take photos with our respective Bullard ancestor and document our connection to our respective lineage.



Andy Alison with James Hovey Bullard and Suzanne McFarland with Albert Wheeler Bullard

Present at the reunion were Kathy Adams and husband Ole Holter (both of whom attended the Centennial in July); Durinda Wood; Ian McFarland (who is doing

two internships in LA as a graduation requirement from Berklee College of Music; Suzanne



Above: Carolyn Bullard & Alicia vanOoyen with Albert W. Bullard, Kathy Adams with Ellen Bullard Adams; Below: Durinda Wood with Harriet (Hattie) Harding Bullard



McFarland; Andy Alison and wife Natalie (Andy is Donna Bullard Alison's son and John Anson Bullard II's nephew); Carolyn Bullard; Alicia Bullard Van Ooyen and her daughter Paice and Paice's friend Johnny.

A lively discussion of family history took place, as Andy is very involved with presenting the Bullard history to the Anaheim Heritage Center from the perspective of Dr. James Hovey Bullard.

### **Dr. James Hovey Bullard Revisits Anaheim, CA**

Andy Alison sent the following information about a special appearance by Dr. James Hovey Bullard on January 18, 2017 at the Anaheim Historical Society meeting:

*Dr. James Hovey Bullard, Anaheim's pioneer physician, returned to Anaheim after an 84-year absence to reveal his fascinating recollections of Anaheim history and mysteries as the guest speaker at Anaheim's MUZEO Museum and Cultural Center & Anaheim Heritage Center at Carnegie Plaza.*

*In collaboration with the Anaheim Heritage Center, a very special presentation featuring Dr. James Hovey Bullard, MD (1856-1933) took place at Anaheim's beautiful new MUZEO Museum and Cultural Center.*



*The Anaheim Historical Society January program presented the life and times of Dr. James Hovey Bullard MD, as he was interviewed by Jane Newell, Heritage Services Manager - Anaheim Heritage Center, in a multi-media event.*

*How is that possible? Dr. James Hovey Bullard, MD was portrayed in character by Andy Alison, an OC historian and a direct descendant of Dr. James Hovey Bullard, MD. Several years ago, Andy began working with the Anaheim Heritage Center to create special events and document the extended Bullard Family's contribution to Anaheim and Orange County's local pioneer history.*

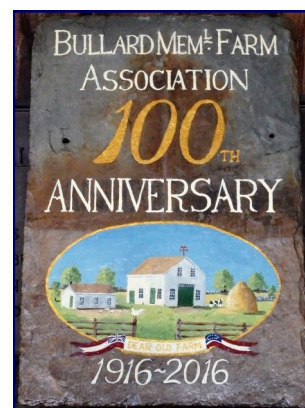
*After extensive research and the contribution of the extensive "Bullard Collection" to the Anaheim Heritage Center, Andy Alison, with the assistance of Jane Newell of the Anaheim Heritage Center, have created a fabulous new multi-media presentation exploring the pioneer contributions of The Bullard Family to Southern California in the late 1880s, including fascinating insights into Dr. Bullard's professional relationship and care of Madame Helen Modjeska, the Yorba Family and other prominent Orange County Families.*

*Along with the historic impersonation and interview of Dr. Bullard, the program featured rare film footage of Dr. Bullard from 1928, in addition to amazing photos and images from his daybooks, medical records, travel journals and interesting historic artifacts. The Bullard Collection was also be on display, courtesy of the Anaheim Heritage Center.*

### **Tractor Fundraiser**

Thank you to all who donated to the tractor fundraiser. With the proceeds we were able to procure a new tractor, making Tim's job just a bit easier all year long, as it has a plow attachment!

The delighted winners of the hand-painted (by Tim) Centennial commemorative slate sign raffled off for the fundraiser were Al & Jean Hood!







The barn looks incredible after all of Tim's hard work painting it and restoring and painting the sliding doors!

### **2016 Robert W. Bullard Memorial Scholarship**

Marlene McIntosh has reported that the 2016 recipient of the Robert W. Bullard Memorial Scholarship at the Indiana University Medical Sciences Program, School of Medicine was awarded to Drew Rohm-Ensing.

The scholarship was established after Bob Bullard died during a climbing expedition on Mt. McKinley (Denali), Alaska, in 1971. Bob was on the faculty at Indiana University's School of Medicine.

Bob was the husband of Marlene, father of Kristen Balfour, Carolyn Bullard, and Alicia Van Ooyen, son of Alvan and Florence, and brother of the late Alvan H. Bullard, Jr., Joanna Hills, and Ann Tomlinson.



Turkey invasion, December 22, 2016

### **Mark your calendars!**

#### **2017 Farm Meeting Schedule:**

- Saturday, June 3
- Saturday, October 7

### **Calling all Bullards**

**Reminder:** As always, please send any and all member news items and photos to Jean Hood. Be sure to include a date. She will include them in the BMFA scrapbooks. Jean's address is: 1 Oaknoll Court, Iowa City, Iowa 52246. Thank you!

### **BMF website**

Be sure to take some time to visit our website:

[www.bullardmemorialfarm.org](http://www.bullardmemorialfarm.org). Ken Wood updates the website frequently and encourages and welcomes any feedback to improve the site.

If you have any news items, photographs, etc., please submit them directly to Ken at:

[woodk@norwalkps.org](mailto:woodk@norwalkps.org)

