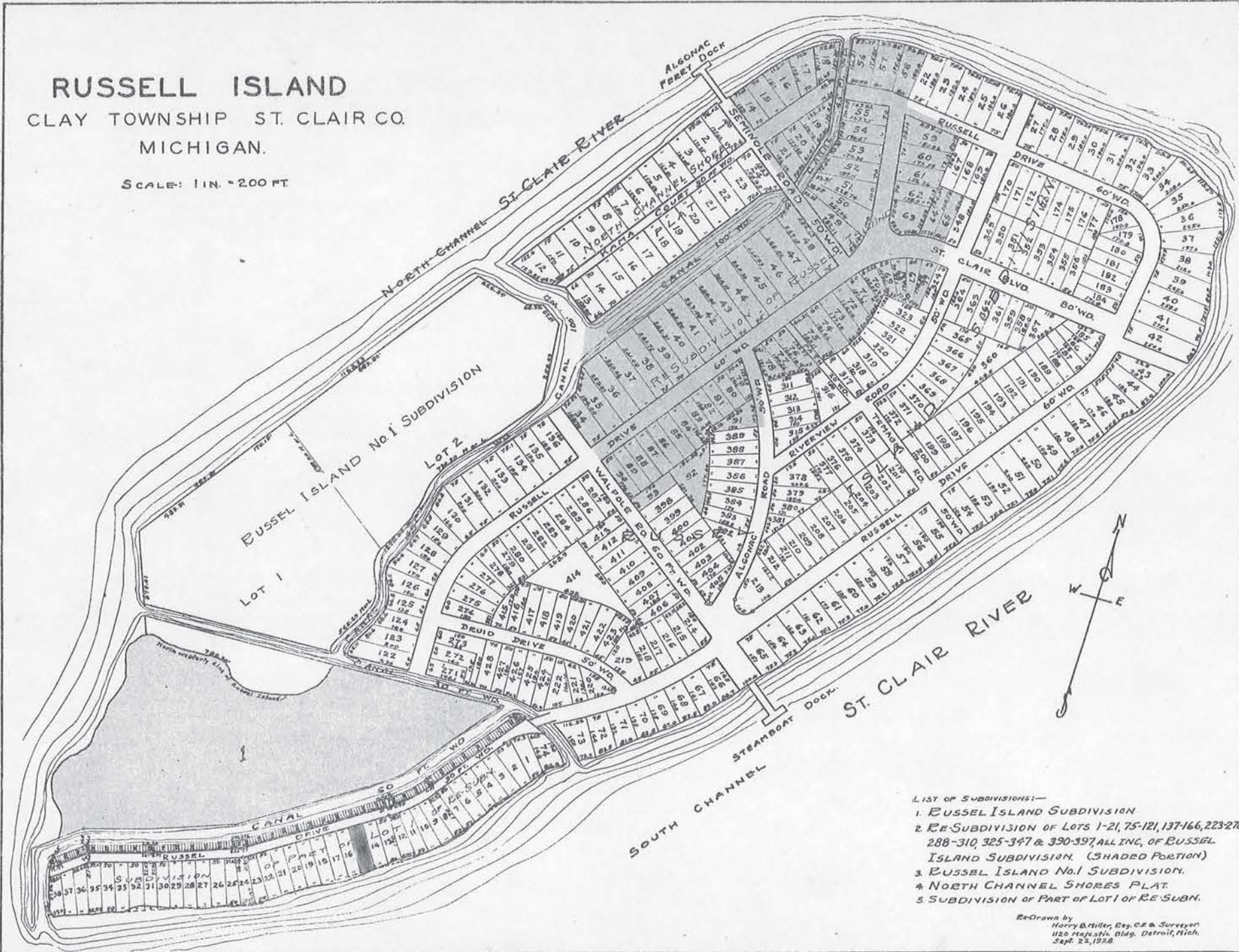


# RUSSELL ISLAND

CLAY TOWNSHIP ST. CLAIR CO.  
MICHIGAN.

SCALE: 1 IN. = 200 FT



- LIST OF SUBDIVISIONS:—
1. RUSSELL ISLAND SUBDIVISION
  2. RE-SUBDIVISION OF LOTS 1-21, 75-121, 137-166, 223-270  
288-310, 325-347 & 390-397, ALL INC. OF RUSSELL  
ISLAND SUBDIVISION (SHADED PORTION)
  3. RUSSELL ISLAND No. 1 SUBDIVISION.
  4. NORTH CHANNEL SHORES PLAT.
  5. SUBDIVISION OF PART OF LOT 1 OF RE-SUBN.

Et Drawn by  
Harry B. Miller, Reg. C.E. & Surveyor  
1120 Michigan Bldg. Detroit, Mich.  
Sept. 22, 1928