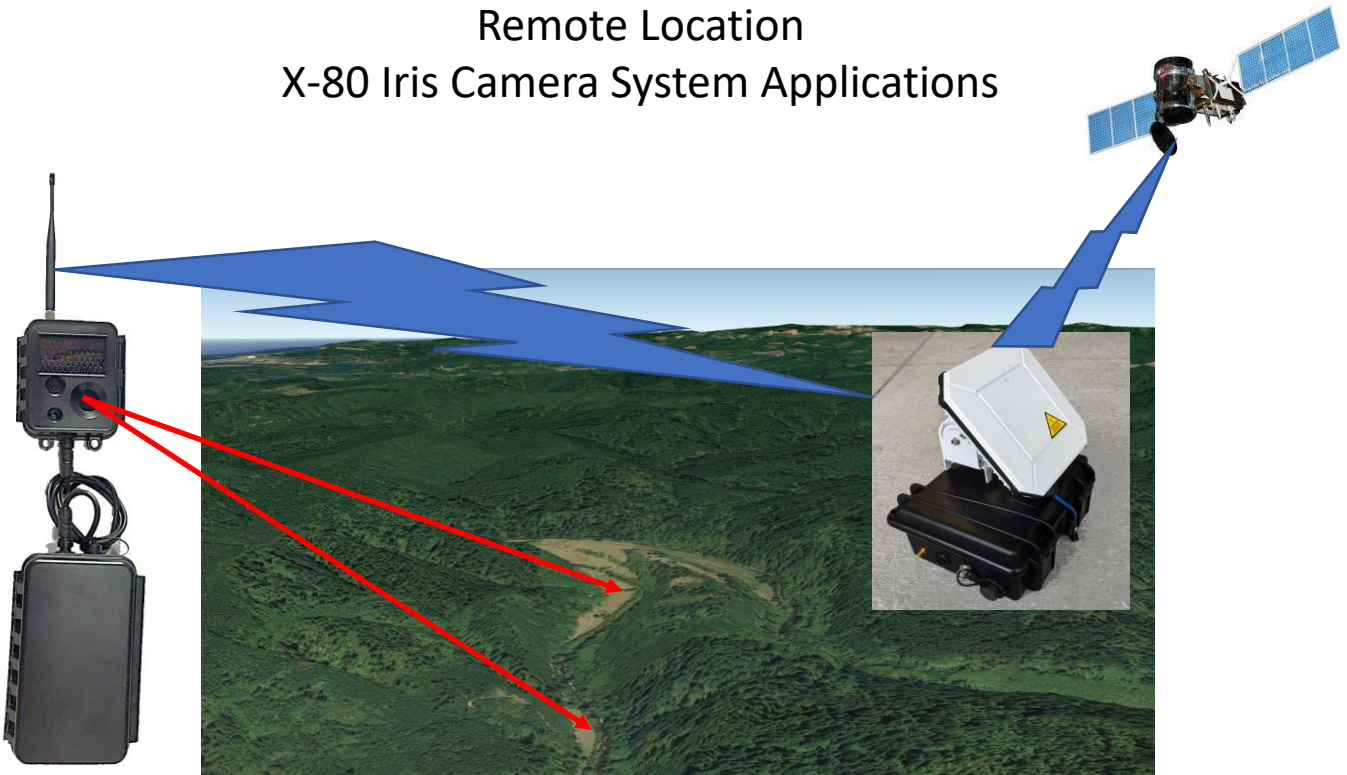
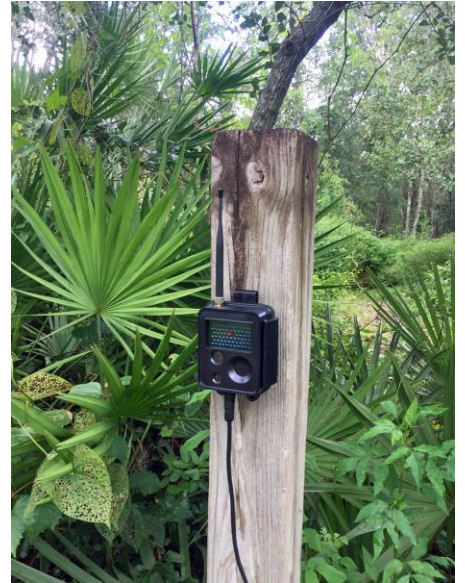


Remote Location X-80 Iris Camera System Applications



Alerts & Images Sent To Satellite Or Cell Receivers.
Then On To End Users As E-mail Or Text Alerts.



X-80 Iris cameras can be triggered via infrared activity directly or from wireless activators positioned in the area to detect infrared activity such as subjects or vehicle traffic. End users also have the ability to callup cameras and trigger an image or video activation for a quick look into a target area.