

Statement of Qualifications

Industrial Deconstruction / Asset Recovery Services

Company Profile

Established in 2007, Ahilleas Enterprises Inc. (AEI) is an industrial deconstruction, equipment salvaging and asset recovery corporation headquartered in Lyons, Ohio. AEI's main goals are recycling, a safe work environment, value for our clients and timely completion of each project.

AEI has established a reputation of high quality cost-efficient asset recovery that has exceeded our client's expectations. This is a reputation we strive to maintain. Our company is defined by its people - honest, experienced, professional and hard working.

Ahilleas Enterprises Inc.
12700 County Road 12 Wauseon, OH 43567
(419)-215-3655
ahilleas@ahilleasent.com

Goals and Services

Asset Recovery



AEI specializes at making sure a building and its contents can be reused or recycled. AEI has four main goals when we step onto a worksite.

- Safe and cost effective removal of any equipment and machinery left in the building.

- To make sure any non-recyclable materials are extracted, contained and managed in a safe and environmentally sound manner.

- The removal and organization of any recyclable material contained in the building's infrastructure.

- To leave the building in a condition desired by the client.

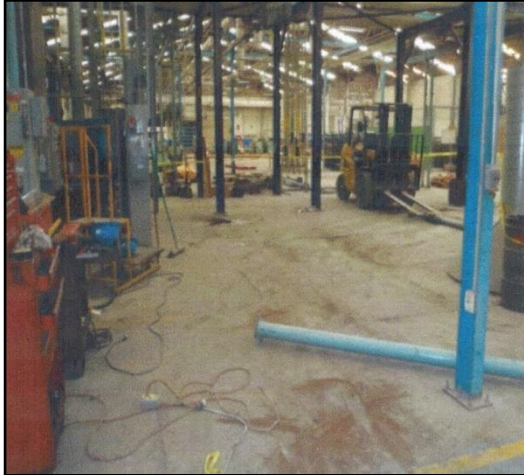


Recycling

Recycling is an important aspect of the work done at Ahilleas Enterprises and being environmentally friendly is one of the ideals our company is built on. In our experience recycling and metal salvage values sometimes exceed the costs of the project expenses which enables the client to experience a financial benefit.

Ahilleas Enterprises Inc.
12700 County Road 12 Wauseon, OH 43567
(419)-215-3655
ahilleas@ahilleasent.com

Goals and Services



Environment, Health & Safety (EHS)

At AEI, all work is governed by comprehensive written environmental, health and safety programs. All employees are trained on the content of these programs. Hazard abatement plans specific to the each project are developed well in advance of project start dates. Prior to beginning work on a new project, the Project Manager, in conjunction with our EHS Program Leader, prepare detailed site-specific health and safety plans to address anticipated conditions, hazards and environmental risks.

Once the project begins, the Project Manager conducts daily pre-work EHS talks with the crew members to ensure safe work expectations are consistently communicated to everyone as well as to provide workers an opportunity to bring up any concerns they may have. The Project Manager observes workers throughout the day to ensure they are executing in

accordance with our pre-established safe work practices. In addition, our EHS Program Leader conducts frequent jobsite visits to monitor work in progress and consult with the Project Manager to further assess hazards and safe work performance.

Ahilleas Enterprises Inc.

12700 County Road 12 Wauseon, OH 43567

(419)-215-3655

ahilleas@ahilleasent.com

Work Experience and Previous Projects

GE plant - Monterrey, Mexico



Ahilleas Enterprises Inc.
12700 County Road 12 Wauseon, OH 43567
(419)-215-3655
ahilleas@ahilleasent.com

Work Experience and Previous Projects

GE Plant- Niles Mahoning



Ahilleas Enterprises Inc.
12700 County Road 12 Wauseon, OH 43567
(419)-215-3655
ahilleas@ahilleasent.com

Work Experience and Previous Projects

GE Plant – Winchester Virginia



Ahilleas Enterprises Inc.
12700 County Road 12 Wauseon, OH 43567
(419)-215-3655
ahilleas@ahilleasent.com

Work Experience and Previous Projects

GE Plant - Euclid



Ahilleas Enterprises Inc.
12700 County Road 12 Wauseon, OH 43567
(419)-215-3655
ahilleas@ahilleasent.com

Work Experience and Previous Projects

AEI also has offiliations with Conagra and Rubber Made

Ahilleas Enterprises Inc.
12700 County Road 12 Wauseon, OH 43567
(419)-215-3655
ahilleas@ahilleasent.com