



Australasian Marine Associates  
www.marineassociates.com.au

# Pre-Dredging SAP Services





## Dredging in Coastal Environments

Our communities are concentrated along the coastal fringe of Australia and there is an expectation that our waterways will be safe and navigable. This expectation is shared by both commercial port operations and the broader community that access their local waterways. I

Dredging provides a direct means for removing seabed material and can be undertaken to achieve improved access (capital dredging) or to maintain an existing declared depths (maintenance dredging).



## Mitigating Environmental Harm

Prior to dredging works there is a need to investigate the physical and chemical nature of the sediment.

The data generated provided a scientific basis for understanding likely intensity and extent of dredge plume, and also the potential for contaminant exposure and dispersion.

Sediment Sampling and Analysis Programs (SAP) are developed prior to the dredging works, and specify the scope of work, contaminants of interest, quality assurance, and reporting requirements. SAP outcome inform the regulatory authorities, and provide a basis for permit approvals and any associated conditions.



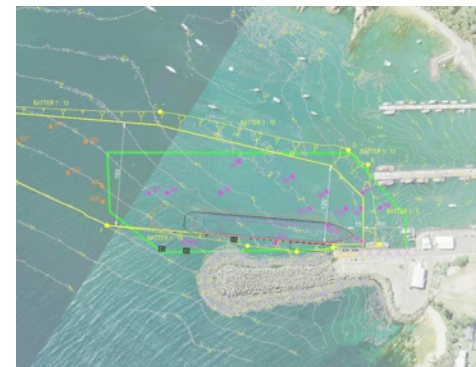
## Australasian Marine Associates SAP Expertise

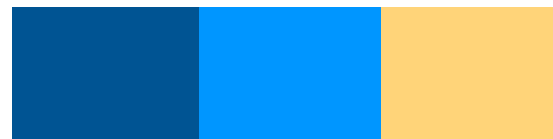
We are specialist in the field of SAP development, SAP field work execution and SAP Implementation reporting.

We have developed and executed SAPs for both capital and maintenance dredging works. Our expertise has led us to delivered over 30 SAPs for private sector and government enterprise.

We have help guide regulator interaction and the review process for developing SAPs and implementation reporting.

Our experienced directors of Australasian Marine Associates are directly involved in all aspects of the SAP work, ensuring scientific outcomes are robust.





## Recent SAPs undertaken by the team at Australasian Marine Associates

Apollo Bay Harbour Marina Sediment Sampling and Analysis Plan, Colac Otway Shire Council, 2018;

Apollo Bay Harbour Beach Sediment Sampling and Analysis Plan, DELWP, 2018;

Labrador Channel & North Channel Maintenance Dredging Sediment Sampling & Analysis Plan, Gold Coast Waterways, 2018;

Marley Point Sediment Sampling and Analysis Plan, Supplementary Investigation, Gippsland Ports, 2017;

Bundaberg Trawler & Marina Complex Maintenance Dredging SAP Implementation Report, Gladstone Ports Corporation (GPC), 2017;

Implementation Report Sediment Analysis Plan for The Port Of Gladstone Maintenance Dredging 2017, GPC, 2017;

Gateway Marina, Dredge Management Plan, TPK Investments Pty Ltd, 2017;

Maintenance Dredging Strategy for The Great Barrier Marine Park World Heritage Area, Transport Main Roads, QLD, 2015.

West Bay Dredging Feasibility Study and Marine Ecology and Sediment Investigations, Mungyalalu Truscott Airbase, Darwin, NT, 2015.

Sediment Sampling and Analysis, Bemm River, Gippsland Ports, Victoria, 2015.

Eden Geotechnical, Geophysical and Environmental Studies, Eden Breakwater Wharf Extension, Crown Lands, Eden, NSW, 2014-2015.

Eden Review of Environmental Factors and Dredge Permit Applications, Crown Lands, Eden, NSW, 2015

Eden Sediment Sampling and Analysis Plan and Implementation Report, Crown Lands, New South Wales, 2015.

Marina Construction and Dredge Management Plan, 1770, QLD, 2015

Port of Bundaberg Sediment Sampling and Analysis Plan and Offshore Infauna and Seagrass Surveys, GPC, QLD, 2014-2015.

Implementation of SAP for Maintenance Dredging of Gladstone Marina & Auckland Inlet, GPC, Queensland, 2015.

---

### **Dr Adam Cohen PhD**

*Director and Principal Marine Specialist*

P: 0413 033 500

E: adam@marineassociates.com.au

### **Dr Daniel Spooner PhD**

*Director and Principal Marine Specialist*

P: 0404 834 164

E: daniel@marineassociates.com.au