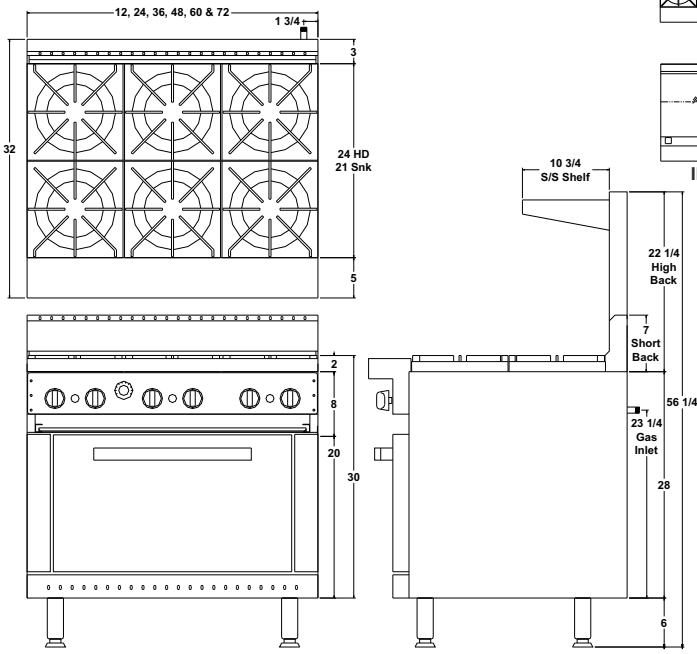




Made in USA

Ideal Commercial Cooking Products, Inc. Oven Ranges innovative design provides the most useful features at an affordable cost. Finally, you can have an intelligent range design that allows to integrate any configuration desired to have all in one. Our oven ranges are made of heavy duty materials. All stainless steel front exteriors and sides with a double insulated wall. Our top grates and open burners are made of heavy cast iron materials. The oven interior is fully insulated with porcelain coating to ensure even heat and easy cleaning, yet rough enough to withstand the constant heavy usage of a busy kitchen.



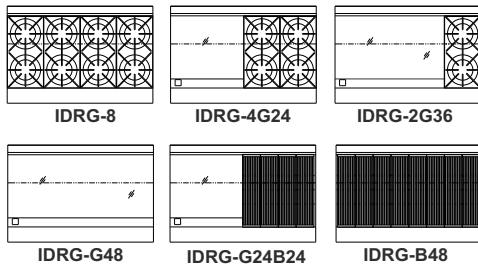
### STANDARD FEATURES

- Stainless steel sides and front.
- Double side panels with insulation.
- Wide heavy duty 5" landing ledge (Bull nose) provides extra work space.
- Separate heavy duty manual control knobs for each burner.
- 12" x 12" heavy duty cast iron top grates and burners rated at 26,000 BTU/hr.
- Adjustable oven thermostat ranges temperatures from 150 to 500 degrees F.
- 35,000 BTU's for standard oven and 27,000 for small one.
- Safety valve shuts off the gas in case the pilot flame turns off.
- One chrome plated rack that can be adjusted in two different positions.
- 2 1/2" wide stainless steel grease through for 3/4" thick griddles and large capacity full width crumb tray for open burners or broilers.
- Complies with "NSF/ANSI Std. 4-2009 "Commercial, Rethermalization, and Powered Hot Food Holding and Transport Equipment"
- Conforms to ANSI STD Z83.11 Certified to CSA STD 1.8
- One year parts and labor warranty.



Model	Dimensions	Weight	Total BTU's/hr	Price List
IDRG-8	48"W x 29"D x 56"H	680 Lbs.	243,000	\$4,620.00
IDRG-2G36	48"W x 29"D x 56"H	735 Lbs	177,000	\$5,515.00
IDRG-4G24	48"W x 29"D x 56"H	715 Lbs	199,000	\$5,370.00
IDRG-6G12	48"W x 29"D x 56"H	700 Lbs	221,000	\$5,225.00
IDRG-G48	48"W x 29"D x 56"H	750 Lbs	155,000	\$5,200.00
IDRG-G24B24	48"W x 29"D x 56"H	770 Lbs	155,000	\$5,660.00
IDRG-B48	48"W x 29"D x 56"H	785 Lbs	155,000	\$5,775.00

**Note:** These specifications apply for units with one oven (standard on left side). For an additional oven add \$1,150 to the List Price, plus 25,000 BTU's extra and the weight will increase 55 lbs.



**Snack Line Ranges** for all models (24" to 72" widths) are available with similar specifications but 24" depth and few less BTU's. Reduce 15% out of the list price and for the models add an "S" at the end to denote Snack Line.

**For instance: IDRG-4G24S**

Ideal 48" Ranges come with high front and shelf as standard. If you require a short back stub instead pointed out in your order. For units with two small ovens rather than one full oven and open cabinet (default models) add in parenthesis a number (2) at the end of the model to denote this change.

**For instance: IDRG-4G24(2)**. The price will increase a \$400.00 net and a set of casters (4) for these models are priced at \$100.00 net. **Note:** Go to page 13 for different option configurations and pricing. If you do not see what you are looking for, please call and let us know. We will custom design it to fit your needs.

**Gas:** 3/4" NPT rear gas connection, specify type of gas and altitude if over 2,000 feet.

**Pressure:** 5" W.C. - Natural Gas  
10" W.C. - Propane Gas

**Note:** Install the pressure regulator supplied with the appliance, at the inlet of the gas line.