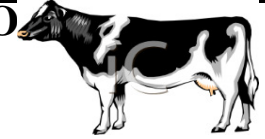


LIVESTOCK COOPERATIVE AUCTION MARKET ASSOCIATION OF

NORTH JERSEY, INCORPORATED

225 WEST STIGER ST HACKETTSTOWN, NJ 07840

SEPTEMBER 15th 2020



While Market reports reflect the majority of livestock sold, there are instances where animals do not fit reporting categories and may not be included

LIVESTOCK REPORT

Animal		NO.	HIGH	LOW
Calves	lb	15	1.30	0.05
Cows	lb	4	0.61	0.54
Easy Cows	lb	1	0.04	0.04
Steers	lb	3	1.05	0.45
Feeders	lb	25	1.27	0.55
Bulls	lb	7	1.25	0.73
Heifers	lb	6	0.97	0.47
Roasting Pigs	lb			
Pot Belly	lb			
Sows	lb	1	0.42	0.42
Butcher Hogs	lb			
Sheep	lb	6	1.15	0.45
Lambs	lb	17	3.25	1.70
Roasting Pigs	hd	7	55.00	55.00
Pot Belly	hd			
Butcher Hogs	hd			
Sheep	hd			
Lambs	hd			
Billy	hd			
Goats	hd	3	200.00	200.00
Kids	hd	2	45.00	45.00
Rams	hd			
Alpaca	hd			
TOTAL		97		

POULTRY REPORT

Animal		No.	HIGH	LOW
Bantam	lb			
Broiler	lb	1	1.10	1.10
Ducks	lb			
Heavy Fowl	lb			
Rabbits	lb	10	2.50	2.00
Roosters	lb			
Turkeys	lb			
Bantam	hd	6	5.50	1.00
Broiler	hd			
Bunnies	hd	8	12.00	2.00
Chicks	hd	41	2.50	0.50
Ducks	hd	101	26.00	1.00
Misc Items	hd	41	55.00	2.00
Guinea Fowl	hd	9	10.00	10.00
Guinea Pigs	hd			
Heavy Fowl	hd	107	15.00	3.00
Silkies	hd	6	2.00	2.00
Roosters	hd	106	17.00	2.00
Peacock	hd	1	100.00	100.00
Pigeons	hd	89	5.50	2.00
Pullets	hd	9	14.00	11.00
Quail	hd	102	2.00	1.00
Rabbits	hd	5	3.00	3.00
Turkeys	hd	9	25.00	22.00
Chucker	hd			
Goose	hd	2	27.00	27.00
Light fowl	hd			
Roasters	hd			
TOTAL		653		

HAY REPORT

TYPE OF HAY	No. loads	HIGH	LOW
Alfalfa			
Mixed	3	3.00	2.00
Orchard			
Timothy	3	3.25	2.75
Grass	13	3.75	2.75
Mulch	5	2.75	1.25
2nd Cut			

LARGE ROUND BALES

TYPE OF HAY	No. Bales	HIGH	LOW
Alfalfa			
Grass			
Mixed			

STRAW REPORT

TYPE OF STRAW	No. Loads	HIGH	LOW
Oat	4	3.50	3.00
Wheat			
Rye	1	3.25	3.25

GRAIN REPORT

TYPE OF GRAIN	NO. OF BAGS	HIGH	LOW
Ground Corn			
Shell Corn			
Oat Feed	10	5.75	5.75

MISC FARM RELATED CONSIGNMENT

ITEM	NO.	HIGH	LOW
Firewood			
Posts			

SALE SCHEDULE: 10am Hay 11am Poultry 2pm Goats, Lambs/Sheep Calves, Feeders, Hogs and Cattle (we run straight through)