

DIXIE CHOPPER®

COMMERCIAL MOWERS

SILVER EAGLE

MODELS:

2550 25hp, 50" Deck

2760KW 27hp, 60" Deck

2760 EFI 27hp, 60" Deck



Silver Eagle 2760KW shown*

THE MOST TRIED AND TRUE ZERO-TURN IN THE INDUSTRY

The **Silver Eagle** was originally conceived as a residential mower, yet proved to withstand rigorous commercial use. Today, the Silver Eagle continues to deliver the same value and performance since its debut over 10 years ago.

- **High Horsepower** – Choose from 25 to 27 horsepower Kawasaki® FX engine or a fuel efficient 27 horsepower Kohler® EFI engine to power you up to 5.3 acres per hour.
- **Elite X Cutting System** – Offered in two cutting widths (50" and 60"), Elite X decks easily tackle large volumes of grass and provide a more attractive after-cut appearance.
- **Mulching Effect** – Add a Twist blade to the existing X-Blade to boost mulching performance.
- **Proven Drivetrain** – Hydro-Gear® pumps and Parker® wheel motors provide smooth and reliable steering.
- **Unique Deck Spindle Package** – Our standard commercial spindle with an added cooling fan that reduces the operating temperature of the belt and spindle while keeping the top-side of the deck clean.

*Actual production model may vary



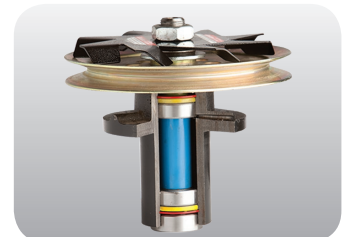
High Performance Package – Comes standard on KW and EFI models.



OCDC – Open and close the discharge chute on command.



Pumps & Wheel Motors – Stronger transmissions for extended system life.



Heavy-Duty Spindles & Cooling Fans – Keep spindles and belts cool.



50" and 60" Elite X Deck – Cuts all grass types cleanly in any situation.

**5 YEAR
BUMPER-TO-BUMPER
WARRANTY***

*up to 600 hour limited warranty



SILVER EAGLE

	50" Deck	60" Deck
Model	2550	2760KW
Engine		2760 EFI
Manufacturer	Kawasaki® FX	Kawasaki® FX
Horsepower	25	27
Displacement	852cc	
Air-cleaner	2 stage	
Cooling	Air cooled	
Starter	Electric	
Engine warranty	3 Year	
Drive System		
Pumps	Hydro-Gear® 12cc	
Wheel motors	Parker® DG240	
Ground speed	12 mph	
Parking brake	Automotive Style	
Towing capacity	500 lbs	
Mower Deck		
Deck size	50"	60"
Acres/hour	4	5.3
Cutting height	1.5" - 5"	
OCDC (operator controlled discharge chute)	Standard	
Deck height adjustments	Manual lift, 1/4" increments	
Electric lift	Optional	
Deck engagement	Ogura® 250 ft-lbs	
Construction	10 ga formed & welded	
Top plate	7 ga bolted (not welded)	
Blades	3 - 17" x 2.5"	3 - 20.5" x 2.5"
Blade tip speed (approximate)	17,875 fpm	17,399 fpm
Spindles	1.25" effective diameter machined shaft	
Spindle housings	1pc keyless sealed cast iron	
Spindle cooling fans	1	3
Anti-scalp rollers	4	
Pulleys	Vented split 3/16" steel deep groove	
General		
Battery	12 Volt, 300cca	
Digital display	Tachometer, voltmeter, service alerts	
Fuel capacity	8 gallons	
Rear tires	24 x 12-12 Grass Master	
Front tires	13 x 6.5-6	
Frame	Welded 2 x 2 tube, 7 ga formed	
Fenders	Stainless steel	
Floor-pan	Flip-up, steel	
Seat	Standard seat w/ armrest	Suspension seat w/ armrest
Springer forks	Optional	Standard
Dimensions		
Overall height	48"	
Overall height (rollbar up)	73"	
Overall width	54"	65"
Overall length	74"	
Overall length (rollbar down)	94"	
Weight	1104 lbs	1215 lbs

DIXIE CHOPPER®
The World's Fastest Lawn Mower®

6302 East County Road 100 N | Coatesville, IN 46121-9689 | Phone 765.246.7737 | Fax 765.246.6011 | www.dixiechopper.com

Specifications may change as we continuously improve our products. For the latest information and mower specifications, please visit dixiechopper.com or your local Dixie Chopper dealer. Engine horsepower information is provided by the engine manufacturer to be used for comparison only. ©2014 Dixie Chopper. All rights reserved. A division of Jacobsen, A Textron Company.