

# PLAYBILL

ON PITCH PERFORMING ARTS

#THEATRE MATTERS

# OPPGA!

On Pitch Performing Arts  
Presents



FIRST  
COMMUNITY  
BANK

 Rocky Mountain Power  
Foundation

Our Purpose...

# Building our Communities

As a local bank, we build our communities one dream at a time. When you open a checking account, you receive a **\$25 donation token** that can go towards a **bank-sponsored charity**.

**Bank Local**

🏦 Get your \$25 Donation token today!



## All the tools you need

Every new personal checking account includes...

- ✓ Free Standard VISA® Debit Card
- ✓ Free Mobile Banking
- ✓ Free Mobile Check Deposit
- ✓ Free Thank You \$25 Give
- ✓ Free Online Banking & Bill Pay
- ✓ Free eStatements with check images
- ✓ Free Check Images
- ✓ \$25 Buy Back of old checks/debit cards from another institution

## Bank-sponsored charities

We work with **16 different charities** in Utah. Check out our website **fcbutah.com** to learn more!

**Support Local**

🏦 Get your \$25 Donation token today!



Unless specified otherwise, customer purchases checks. Other fees such as overdraft, continuous overdraft, etc. may apply. See fee schedule for details. Free \$25 Give to bank-sponsored charities given at the time of account opening. Ask us for details. Bank rules and regulations apply. \$25 for checks and debit cards from another financial institution. Your account will be credited at the time the checks/debit cards are presented.



# Willy Wonka JR.

WILLY WONKA/CANDYMAN KABE ALVORD

CHARLIE BUCKET COLE BECKHAM

GRANDPA JOE DEXTER HANSEN

MRS. BUCKET/OOMPA LOOMPA HONEY ANNA CLUFF

GRANDMA GEORGINA/OOMPA LOOMPA HORTENCIA/SQUIRREL ABIGAIL BECKHAM

GRANDMA JOSEPHINE/OOMPA LOOMPA LAVENDER/SQUIRREL ALLISON BROUGH

GRANDPA GEORGE/ OOMPA LOOMPA/SQUIRREL LUCY JEWKES

MATILDA/OOMPA LOOMPA FOX HADLEY BRYANT

MR. BUCKET/JAMES/OOMPA LOOMPA INK MCKAY WISER

PHINEOUS TROUT/ OOMPA LOOMPA GOLDILOCKS/ SQUIRREL JORDAN VREELAND

AUGUSTUS GLOOP ELLA HANSEN

MRS. GLOOP ANNE WISER

VERUCA SALT NARA MORGAN

MR. SALT SAYLOR VEDAA

VIOLET BEAUREGARD BROOKLYNN HIPWELL

MRS. BEAUREGARD COURTNEY CARDON

MRS. TEAVEE KYLEE BROWN

MIKE TEAVEE LUCY HOLLENBECK

NEWSIE/BROADCASTING DIRECTOR LILLIAN GORHAM

SPY OOMPA LOOMPA SPIKER LILLIAN SCHAEILING

SPY OOMPA LOOMPA SPONGE AVA NASH

FEATURED DANCER/ CANDY KID/ OOMPA LOOMPA SQUIGGLES MIYA CARTER

FEATURED DANCER/ CANDY KID/ OOMPA LOOMPA WHIRLIES BREYA GROW

FEATURED DANCER/ CANDY KID/ OOMPA LOOMPA TWIRLIES OLIVIA BILBREY

FEATURED DANCER/ CANDY KID/ OOMPA LOOMPA RUFFLES ISABELLE PERRY

FEATURED DANCER/ CANDY KID/ OOMPA LOOMPA TRUFFLES BRINLEY HUGIE



**OPPA!**  
On Pitch Performing Arts



# LEGACY PEDIATRIC DENTISTRY DR. SCOTT FOLKMAN



3225 West Gordon Ave, Suite G; West Layton

## 801.544.3400

Call for an appointment today!



[www.legacypediatricdentistry.com](http://www.legacypediatricdentistry.com)

## A dentist your kids will be excited to go to!

- ★ Awesome "outer-space" themed office & FUN kid-friendly staff
- ★ TV's above chairs streaming **NETFLIX** for kids
- ★ Specialist in infants, children, teens, special-needs children/adults
- ★ Full range of services, including sedation
- ★ Most insurance accepted, please call with questions
- ★ Check out our Reviews on **Google** & **facebook**.

### \*New Patient Gift



**\$5 Gift Card**  
of your choice!

\*Must present this coupon on your first visit to receive gift card. Not valid with free Toddler Exam.

### No Insurance Special

# \$79

Includes exam,  
X-rays, cleaning,  
& fluoride.

Insurance will be billed, if available, maximum out-of-pocket.

free toddler exam  
for kids 2 & under



No out-of-pocket expense.  
Insurance will be billed, if available.



# LEGACY PEDIATRIC DENTISTRY DR. SCOTT FOLKMAN

# ON PITCH PERFORMING ARTS PRESENTS:



Roald Dahl's

Adapted for the stage by:

*Leslie Bricusse*

*Timothy Allen McDonald*

Lyrics and Music by:

*Leslie Bricusse*

*Anthony Newley*

Based on the book, "Charlie and the Chocolate Factory" by Roald Dahl.

Direction

*Jen Morgan*

Music Direction

Show Manager

Choreography

*Breanne Sanders*

*Alex LaPorte Hunter Williams*

Light Design  
Ed. Production Manager

Producer

Costume Design

*Carly Haberman*

*Ashley Ramsey Anna Graff-Rice*

Set Build/Paint

Set Design

*Carly Haberman*

*Brandon Stauffer*

## OPPA! STAFF

Executive Director

Admin. Coordinator

*Brandon Stauffer*

*Leslie Barrett*

Education Director

Production Management

Costume Shop Manager

*Ashley Ramsey*

*Kennedy Miller*

*Amanda Larsen*

Roald Dahl's Willy Wonka JR.

Is presented through special arrangement with Music Theatre International (MTI).

All authorized performance materials are also supplied by MTI.

[www.mtishows.com](http://www.mtishows.com)

The videotaping or other video or audio recording of this production is strictly prohibited



# SCENES & SONGS

## ACT ONE

Prologue: Wonka Factory

- Pure Imagination - Wonka
- Golden Age of Chocolate - Full Cast

Scene 1: The Bucket Shack

Scene 2: Outside the Bucket Shack

- The Candy Man - Candy Man, Charlie, James, Matilda, Candy Kids

Scene 3: The Bucket Shack

Scene 4: Outside the Bucket Shack

Scene 5: The Gloops

- I Eat More - Augustus, Mrs. Gloop, Phineous Trout

Scene 6: Veruca

Scene 7: Outside the Bucket House

- Think Positive - Charlie, Mr. Bucket

Scene 8: The Bucket Shack

Scene 9: Violet Radio Station

Scene 10: Home of Mike Teavee

- I See It All on TV - Mike, Ms. Teavee

Scene 11: The Bucket Shack

- Cheer Up, Charlie - Grandpa Joe, Mrs. Bucket, Mr. Bucket

Scene 12: Two Weeks Later - Snowy Streets

- Think Positive (Reprise) - Charlie
- (I've Got a) Golden Ticket - Charlie, Grandpa Joe, Mr. Bucket, Golden Ticket Winners

## INTERMISSION

## ACT TWO

Scene 13: Outside Wonka's Factory

- At The Gates - Wonka
- In This Room Here - Wonka, Golden Ticket Winners, Winners' Parents
- Factory Reveal Sequence - Wonka, Golden Ticket Winners, Winners' Parents

Scene 14: The Chocolate Smelting Room

- Oompa-Loompa 1 - Oompa-Loompas, Augustus

Scene 15: Pink Candy Boat

- There's No Knowing - Wonka, Winners' Parents

Scene 16: The Inventing Room

- Chew It - Violet, Wonka, Golden Ticket Winners, Winners' Parents
- Oompa-Loompa 2 - Oompa-Loompas, Violet

Scene 17: Fizzy Lifting Room

- Flying - Charlie, Grandpa Joe
- Burping Song - Charlie, Grandpa Joe

Scene 18: The Nut Room

- I Want it Now! - Veruca
- Oompa-Loompa 3 - Oompa-Loompas, Veruca

Scene 19: Choco-Vision Room

- Oompa-Loompa 4 - Oompa-Loompas, Mike

Scene 20: End of the Tour

- Finale - Full Cast
- Bows - Full Cast

Utah  
**REAL**  
Estate.homes

**MATT HAWKES**  
**REAL ESTATE**  
— 801.869.0268 —



**WE SOLD ANOTHER  
HOME IN YOUR AREA!**

**Visit**

***UtHomeValues.com***

**for your Home Value!**

*or scan QR code*



real  
REAL BROKER LLC



# LINK EDUCATION LEAGUE

Helping students become:

CREATIVE

COLLABORATIVE

COMPASSIONATE

CRITICAL THINKERS

What does learning at Link Education League look like?

Scan the QR code to see it in action!

LEARN MORE & APPLY AT [LINKEDUCATIONLEAGUE.COM](http://LINKEDUCATIONLEAGUE.COM)



EDUCATION  
FOR THEIR FUTURE  
NOT OUR PAST

NOW ENROLLING!



# THE HUNCHBACK OF NOTRE DAME



*Oppa!*  
On Pitch Performing Arts

Main Stage

FEB. 9 - MAR. 2, 2024

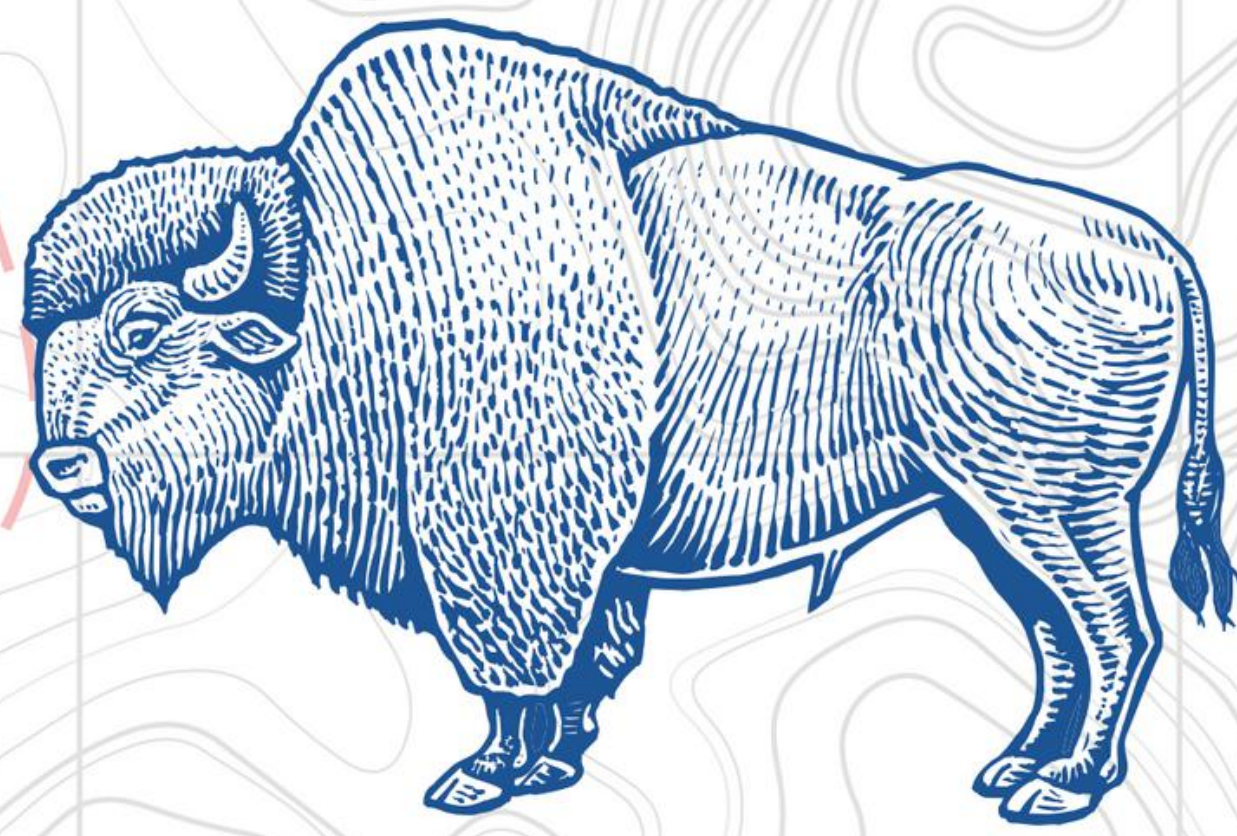
# DIRECTOR'S NOTE

Directing Wonka Jr. has been such a marvelous adventure into the "world of pure imagination". In this production, we have combined the Golden Age of Chocolate with the Golden Age of Musicals, creating a feast for both eyes and ears through classic Gene-Kelly-esque inspired dance moves and music that first appeared in the Charlie and Chocolate Factory film (1971). By doing so, we hope to take you on a nostalgic journey of joy and child-like delight as we follow Charlie Bucket through the mystical world of Willy Wonka's Chocolate Factory.

Part of that journey is through color, which has inadvertently become a character in itself. For example, Grandpa Joe often tells Charlie to write his wishes in purple ink in order to make them come true, and Wonka, himself, wears a purple coat. Purple then has become the color of joy and magic. We can see the children who have that magic with them, and those that don't, as well as the bucket family who has the magic, but might be a little faded because of time. Watch for the purple theme in lights as well as costumes.

*-Jen Morgan*





## **FOUND IN DAVIS COUNTY**

**Intermountain expertise with Davis County convenience is now available right in your backyard.**

**Layton Hospital provides a comprehensive complement of services, including:**

### **EMERGENCY**

Trauma Level III  
Stroke Receiving Center  
Observation Unit  
TeleHealth Integration  
Accelerated Care Model

### **WOMEN'S HEALTH**

Labor & Delivery  
Simply Birth  
NICU  
Outpatient Lactation  
24/7 Laborist Coverage

### **SURGICAL**

Robot Assisted Surgeries  
Orthopedics  
General Surgery  
Same Day/Endo/GI  
GYN Surgeries

To learn more about our services or find a provider, visit  
*[LaytonHospital.org](http://LaytonHospital.org)*



**Intermountain<sup>®</sup>  
Layton Hospital**



# HOME 2 SUITES LAYTON


803 Heritage Park Blvd  
Layton, UT 84041

## OUR HOTEL FACILITIES

---

- ✓ Extended Stay Hotel
  - ✓ Swimming pool
  - ✓ Kitchenettes
  - ✓ 24 Hour Fitness Room
  - ✓ Outdoor BBQ Grills
  - ✓ Much More
- 

CONTACT US

 801-820-9222



# KEEP MOVING FORWARD with Sylvan!



## SYLVAN HAS EXACTLY WHAT YOU NEED

More than 7 million parents have trusted Sylvan to deliver results. No matter what your family's needs are, we have solutions to help. And we've adapted to the new ways kids are learning.

### IN CENTER TUTORING

Personalized support from our great teachers!

- Get personalized attention with in person, face-to-face sessions
- Get guided support that is personalized to your child.
- Work on skill gaps
- Get ahead and master new skills

**Mention "OPPA" for a 20% discount**

### Online Classes

Same great teachers, from the comfort of your home.

- Teachers lead live, small group classes ( 1 Teacher to 2 students)
- Skills and confidence growth to be ready for the next school year
- Interactive and fun activities to keep kids engaged and spark a love of learning

**Classes start with a monthly as low as \$299/mo.**

### Homework Support

Valid only at Sylvan Learning of Layton or Bountiful

- Core 4 ( up to 4 hrs. a month)
- Basic 8 ( up to 8 hrs. a month)
- Super 16 ( up to 16 hrs. a month)

**Monthly packages starting @ \$200 a month**

### Sylvan of Layton

575 N Main Street

**801-543-4400**

layton.ut@sylvanlearning.com

### Sylvan of Bountiful

845 S Main Street Ste. B5

**801-543-4400**

Layton.ut@sylvanlearning.com

# Our exclusive Creators Club

## **PATRON:**

Amanda Larsen

Amy Shaffer

Danielle Bendinelli

Dave Green

Michelle Green

Eric Ludlow

Glenda & Rob Smith

Heather Ann Jackson

Joshua Rice

Kelly Silvester

Leslie Barrett

Mandie Harris

Teresa Howell

Jeff Duncan

## **SUPPORTER:**

Anne Jones

Ashley Ramsey

Terry Davis

Caitlin Olsen

Chelsea Morris

Matt Higgins

Natalee Stuart

Sommer Ellsworth

Tyler Neil

Anonymous

## **ADMIRER:**

Chris & Jen Morgan

## **ENTHUSIAST:**

Rachel Helwig

Dan Tate

Creator Club Members are our most passionate supporters, and their monthly giving ensures that our mission will continue.

The support we receive from the Creators Club allows us to create children's theatre, community theatre, produce new works, and expand the arts in our community.

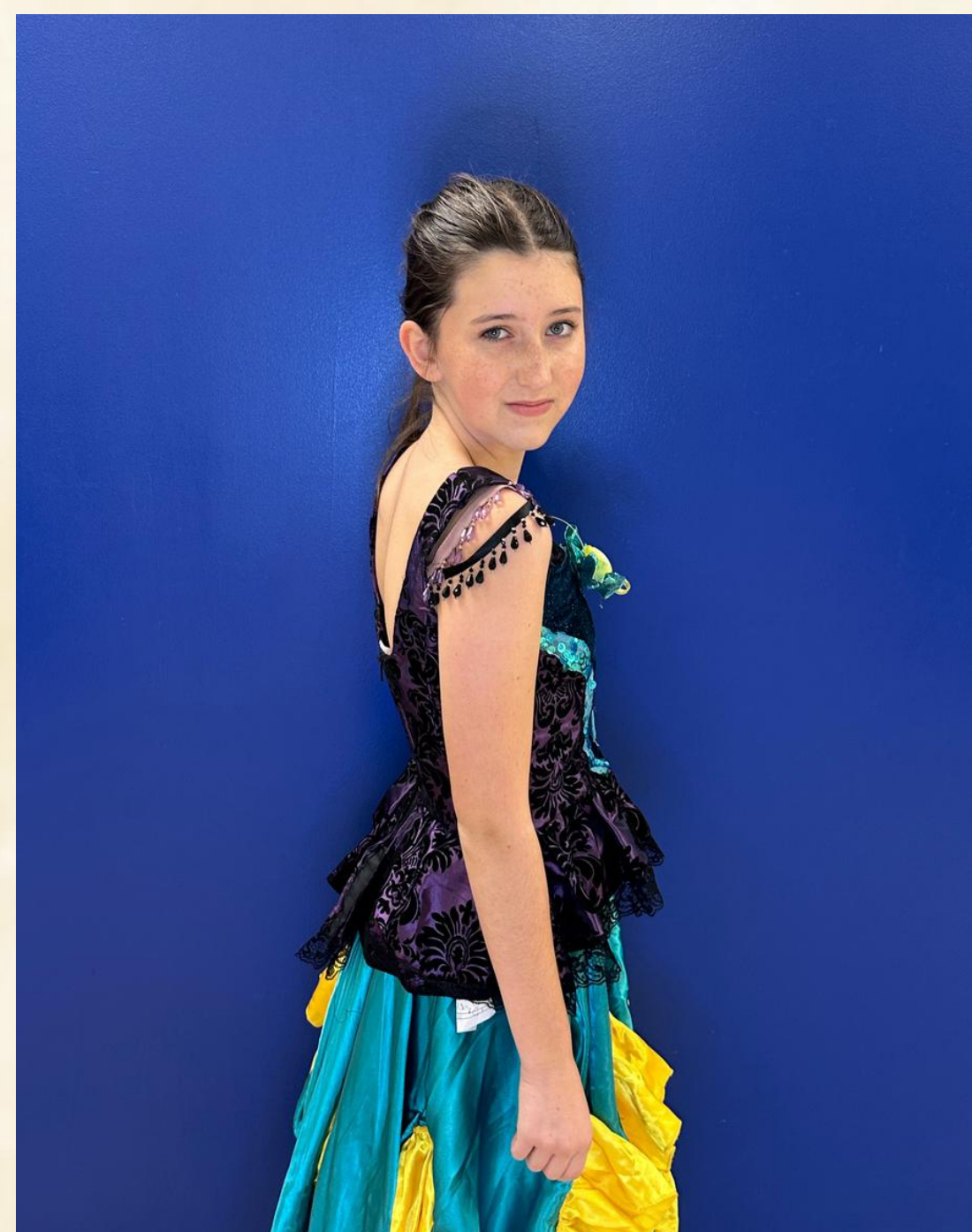
Select perks may include: Priority performance seating, Exclusive Creator Club events, Advance ticketing opportunities, Autographed cast memorable, gift shop discounts and VIP invitations.

All club members receive complimentary access to select performances of shows in our Creator's Stage series.

**OPPA!**  
On Pitch Performing Arts

**Thank You is never enough.**

# CAST PHOTOS



# CAST PHOTOS

