

Watch Out for Powerlines and Power Poles

West Wetaskiwin REA would like to remind all farmers as you head out for seeding season to **look up and around** to identify where the power poles and powerlines are located.

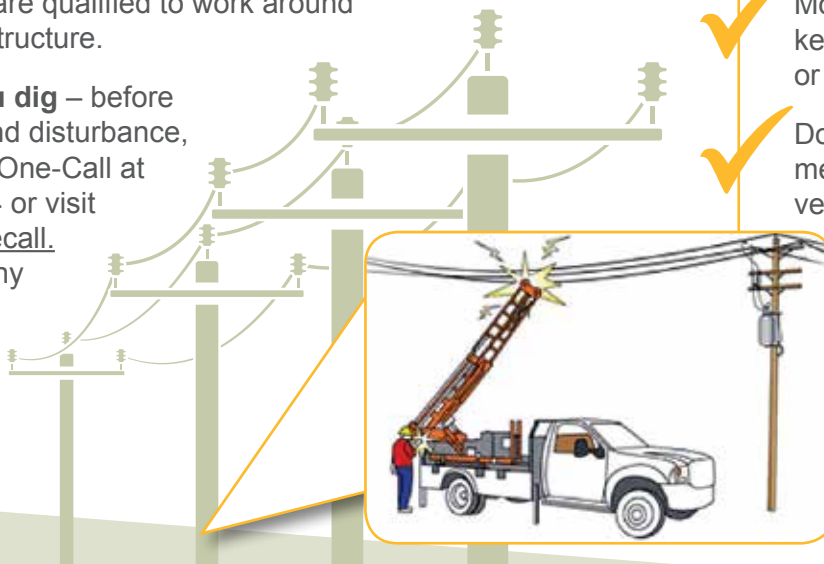
Overhead power lines and communication lines are installed and maintained to permit the safe movement of equipment and objects (see chart on back page for powerline safe distance details). However, we are reminded that equipment and machinery gets bigger all the time and we encourage members to follow these cautions.

Stay 7 meters (23 feet) away from power lines - pay special attention when operating grain augers, air seeders, lifting truck boxes or operating back hoes.

Pile safely – locate piles (dirt, gravel, etc.) away from power lines and where children can't climb too near. Remember the 7 meter (23 feet) rule!

Watch tree branches – overgrown vegetation may be too close to overhead wires and make pruning dangerous. Don't take chances – only certified Utility Tree Trimmers are qualified to work around electricity infrastructure.

Call before you dig – before doing any ground disturbance, contact Alberta One-Call at 1-800-242-3774 or visit www.albertaonecall.com to locate any underground facilities.



Downed Powerlines May Be Energized Powerlines

Contact with powerlines can be avoided if you plan ahead, know the dimensions of your equipment and continually watch for poles and lines. However, if you do encounter a downed powerline situation, follow these cautions.

If you come upon a downed powerline stay at least 10 metres away and phone FortisAlberta immediately at 310-WIRE (9473) or 1-855-333-9473. Make sure nobody else comes near.

If the power line has come down on your equipment or vehicle, stay inside and call 911 and FortisAlberta for assistance.

If you must get out of the equipment or vehicle (in the case of fire) follow these steps.

- ✓ Never touch the ground and the vehicle or equipment at the same time. Jump out with your feet together and avoid stumbling.
- ✓ Move away slowly by shuffling and keeping both feet close together, or by bunny hopping away slowly.
- ✓ Do this until you are at least 10 metres (33 feet) away from the vehicle/equipment.

Do not approach or touch anything, such as a vehicle, tree or person that is in contact with a powerline.

For power troubles or service requests, contact: FortisAlberta (the distribution system operator for West Wetaskiwin REA): Toll-free: 1-855-333-9473 or 780-310-9473

For REA inquiries contact:
West Wetaskiwin REA
R.R. #1 Station Main,
Wetaskiwin, Alberta T9A 1W8
Phone: 780-335-9378 (WEST)
E-mail: westwet@telus.net
www.westwetaskiwinrea.com

For billing or account inquiries contact:
Battle River Power Coop
Box 1420
Camrose, Alberta T4V 1X3
Toll-free: 1-877-428-3972
E-mail: brpc@brpower.coop
www.brpower.coop

Account Numbers for Each Payment Are Critical For Payment Processing

To properly process payments, it is necessary to include the account number for each payment amount. This is particularly important for individuals with multiple services. A lump sum payment referencing several services can't be separated by utility billing technology. Computer programs require a single account number and the respective payment amount to accurately assign funds to the proper account.

Payments that do not follow this process (payment amount referencing specific account number) will have the total payment amount applied against a single account number. This will leave any additional accounts in arrears and will trigger delinquent account status.

NOTE: Account numbers are easy to locate on monthly invoices. For members on the RRO, the account number appears in the information bar near the top of the invoice, on the left side (see arrow).

SERVICE TO	RATE CODE	BILL TYPE	METER READING			SERVICE CAPACITY
Aug 06/17		R O	CURRENT	PREVIOUS	KW HOUR	
ACCOUNT #			63484.0	62671.0	81	
			DEMAND READING			
			MINIMUM	CURRENT		

Please ensure that your payment(s) clearly indicate the applicable account number to avoid a delinquent account assignment.

Safe Distances When Moving under Powerlines

The following chart highlights safe distances while moving under power and communication lines. The heights shown reflect the maximum height equipment or objects can be. If your equipment exceeds these heights, you must contact FortisAlberta at 310-WIRE (9473) or 1-855-333-9473 before proceeding.

3.6 meters (11.8 feet)	areas normally accessible to pedestrians only
4.1 meters (13.5 feet)	driveways to residences or residential garages
4.2 meters (13.7 feet)	areas where agricultural equipment is normally used, farm or yard entrances and/or farm field access roads
4.3 meters (14.1 feet)	right of way of underground pipelines
4.8 meters (15.7 feet)	lanes, alleys or entrances to commercial or industrial premises
5.3 meters (17.3 feet)	roads and highways and/or crossing oilfield lease roads

Regulated Rate Option



The Regulated Rate Option (RRO) may increase or decrease from month to month as it is priced on the open market and subject to many factors relating to supply and demand. It is not a 'regulated' rate, rather is a default rate. If you do not have a contract with an electricity retailer, then you are on the RRO. For April 2019, RRO is priced at \$0.05791 per kWh, reflected on your enclosed orange bill. For May 2019, the Battle River Power Coop monthly rate as calculated under the RRO regulation is \$0.05955; the billing rate charged to WW REA members is \$0.05955.

It is very important to note that your electrical distribution system provider will always be the West Wetaskiwin REA, regardless of who supplies your electricity. Members will not be disadvantaged in any way based on their retailer choice.

For a list of energy retailers, contact the Utilities Consumer Advocate: 310-4-UCA (310-4822) or www.ucahelps.alberta.ca. If you do not have a contract with an electricity retailer, then you are on the default Regulated Rate Option (RRO). The RRO rate is listed on www.westwetaskiwinrea.com

Information on West Wetaskiwin's Code of Conduct Regulation Compliance Plan can be found on our website: www.westwetaskiwinrea.com