

fwReefer



THERMO KING & CARRIER COMPATIBLE
REEFER DOORS, PANELS & GRILLES



1-877-623-5338
www.fwreefer.com

Transicold Ultra / Supra

Compatible Doors & Panels



1-877-623-5338

sales@fwreefer.com

www.fwreefer.com



Compatible Doors & Panels for Transicold Ultra

1. Ultra Lower Curb Side Panel

FW1358

Other Known Part Numbers: Carrier ® 1313FG
Also Fits: GENESIS TM900, GENESIS TM1000
Ultra XT, Extra XT



2. Ultra Curb Side Center Front Panel

FW1302

Other Known Part Numbers: Carrier ® 1302
Fits Models: ULTRA, TRANSICOLD
Also Fits: GENESIS TM900, GENESIS TM1000
Ultra XT, Extra XT



3. Ultra Road Side Center Front Panel

FW1301

Other Known Part Numbers: Carrier ® 1301
Fits Models: ULTRA, TRANSICOLD
Also Fits: GENESIS TM900, GENESIS TM1000
Ultra XT, Extra XT



4. Ultra Lower Roadside Panel

FW1314

Other Known Part Numbers: 1314FG
Fits Models: ULTRA
Also Fits: GENESIS TM900, GENESIS TM1000
Ultra XT, Extra XT



Carrier Supra Compatible Panel

1. Carrier Supra Panel

FW1201

Other Known Part Numbers: RS1201FG
Fits Models: Supra
Also Fits: Supra 644, Supra 744, Supra 844



Our entire product line of reefer doors and panels is made to fit the exact specifications of the OEM originals but at an affordable cost. We save companies thousands of dollars annually!

SB II /III Compatible Doors & Panels



SB II/III Compatible Reefer Doors and Panels

fw Reefer

1-877-623-5338

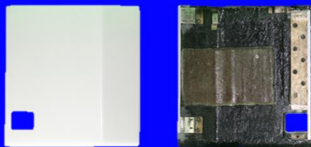
www.sales@fwreefer.com

www.fwreefer.com

6. SB II Roadside Front Door

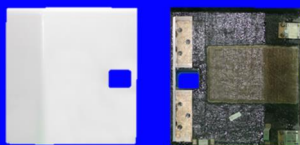
FW4489

Other Known
Part #: 98-5401
Fits: SB II & III Units
(Lower latch cut out)



FW3031

Other Known
Part #: 98-3031
Fits: SB II & III Units
(Center latch cut out)



Doors & Panels for SB II / III Units

1. SB II Top Cap

FW2747

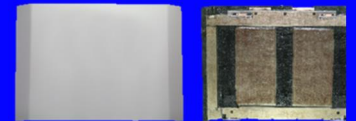
Other Known Part Numbers: 98-5208
Fits Models: SB II & III Units



2. SB II Center Panel

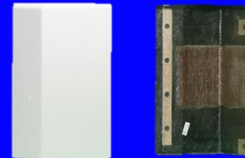
FW3032

Other Known Part Numbers: 98-5283
Fits Models: SB II & III Units



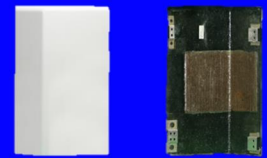
3. SB II Lower Curbside Panel

FW2748



Fits Models: SB II & III Units

FW4478P



Fits Models: SB II & III Units

4. SB II Lower Roadside Control Panel

FW4487-P



Other Known Part Numbers: 98-4487
Fits Models: SB II & III Units

FW2978

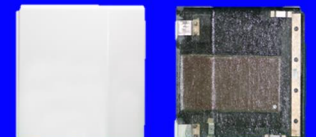


Other Known Part Numbers: 98-4091
Fits Models: SB II & III Units

5. SB II Curbside Front Door

FW3030

Other Known Part Numbers: 98-4480
Fits Models: SB II & III Units



SB Series Compatible Doors & Panels

Including: SB 110, 210, 310, 400 & Spectrum SB only



fw Reefer

1-877-623-5338

sales@fwreefer.com

www.fwreefer.com

Our entire product line of reefer doors and panels are made to fit the exact specifications of the OEM original but at an affordable cost. We save companies thousands of dollars annually!

Doors and Panels for SB series Reefers

1. SB Top Cap

FW5755

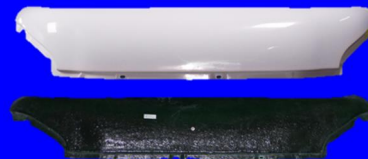
Other Known Part #: 98-6769

Fits Models: SB Units

SB-100, SB-110, SB-190, SB-200

SB-200TG, SB-210, SB-230

SB-300, SB-310, SB-400



2. SB Grille Curbside

FW7302

Other Known Part #: 98-6083

Fits Models: SB Units

SB-100, SB-110, SB-190

SB-200, SB-200TG, SB-210

SB-230, SB-300, SB-310, SB-400



3. SB Grille Roadside

FW7474

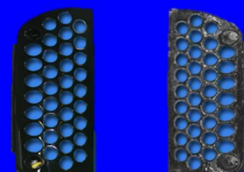
Other Known Part #: 98-7197

Fits Models: SB Units

SB-100, SB-110, SB-190

SB-200, SB-200TG, SB-210

SB-230, SB-300, SB-310, SB-400



4. SB Top Center Door

FW5757

Other Known Part #: 98-7059

Fits Models: SB Units

SB-100, SB-110, SB-190, SB-200

SB-200TG, SB-210, SB-230

SB-300, SB-310, SB-400



5. SB 200 Curbside Front Door

FW5763

Other Known Part #: 98-5763

Fits Models: SB Units

SB-100, SB-110, SB-190

SB-200, SB-210, SB-230, SB-300

SB-310, SB-400



(continued on next page)

SB Series Compatible Doors & Panels

Including: SB 110, 210, 310, 400 & Spectrum SB only

(Continued)



Our entire product line of reefer doors and panels are made to fit the exact specifications of the OEM original but at an affordable cost. We save companies thousands of dollars annually!

fw Reefer

1-877-623-5338

sales@fwreefer.com

www.fwreefer.com

Compatible Doors and Panels for SB series

6. SB Roadside Center Door

FW5764

Other Known Part #: 98-7058

Fits Models: SB Units

SB-100, SB-110, SB-190, SB-200

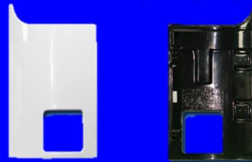
SB-200TG, SB-210, SB-230

SB-300, SB-310, SB-400

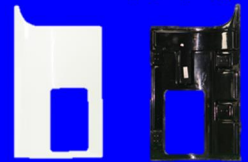


7. SB Roadside Panel

FW7078 (small opening)



FW5761 (large opening)



Other Known Part #: 98-6457, 98-4091

Other Known Part Numbers: 98-7079

Fits Models: SB Units SB-100, SB-110, SB-190, SB-200, SB-200TG, SB-210, SB-230, SB-300, SB-310, SB-400

8. SB Curbside Panel

FW5762

Other Known Part #: 98-5762

Fits Models: SB Units

SB-100, SB-110, SB-190, SB-200

SB-200TG, SB-210, SB-230, SB-300

SB-310, SB-400



9. SB Bottom Pan

FW7057

Other Known Part #: 98-5756, 98-7077

Fits Models: SB Units

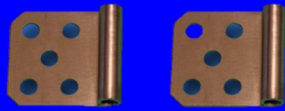
SB-100, SB-110, SB-190, SB-200

SB-200TG, SB-210, SB-230, SB-300

SB-310, SB-400



Hardware & Unit Panels Compatible with SB Series and S-3



HINGE FOR ROAD SIDE PANEL
FWR2T61

Other Known Part Numbers: 92-1137
Fits Models: SB Units
Used for Part # FW5761 & FW7078

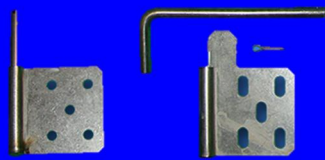
All Hinges Fit:

SB-100
SB-110
SB-190
SB-200
SB-210
SB-230
SB-300
SB-310
SB-400



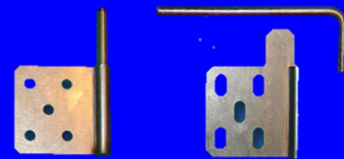
HINGE FOR CURBSIDE PANEL
FWR2T62

Other Known Part Numbers: 92-1137, 92-1136
Fits Models: SB Units
Used for Part # FW5762



HINGE FOR CURBSIDE CENTER DOOR
FWR2T63

Other Known Part #: 92-1129
92-1130, 99-8100, 55-5601
Fits Models: SB Units
Used for Part # FW5763



HINGE FOR ROADSIDE PANEL
FWR2T64

Other Known Part #: 92-1133
92-1134, 99-5100, 55-5601
Fits Models: SB Units
Used for Part # FW5764



fw Reefer

1-877-623-5338

sales@fwreefer.com

www.fwreefer.com

1. EVAPORATOR COVER BACK WITH SCREENS

FW1448FG

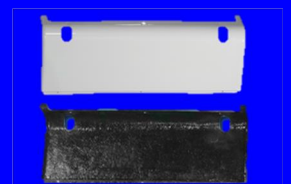
Other Known Part #: 92-1448, 98-7979
Fits Models: S-3 Units



2. EVAPORATOR COVER FRONT

FW1450FG

Other Known Part : 92-1450, 98-7977
Fits Models: S-3 Units, 92-1450, 98-7977



Thermo King Precedent

Compatible Doors & Panels

NEW

fwReefer



Compatible Doors & Panels for Precedent Units

1. **FW9120** Roadside Center Door

Other Known Part Numbers: 98-9120

FW9460 – New style after Feb 2017

Other know part number 98-9640



2. **FW9121** Curbside Center Door

Other Known Part Numbers: 98-9121

FW9461 – New style after Feb 2017

Other know part number 98-9641



3. **FW9122** Roadside Outer door

Other Known Part Numbers: 98-9122

FW9462 – New style after Feb 2017

Other know part number 98-9642



4. **FW9123** Curbside Outer Door

Other Known Part Numbers: 98-9123

FW9463 – New style after Feb 2017

Other know part number 98-9643



5. Bottom Pan

FW1224

Other Known Part Numbers: 93-1224

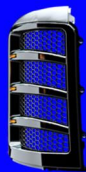


9. Grille - Roadside

FW9117FG

Complete with mesh grille

Other Known Part Numbers: 98-9117



10. Grille - Curbside

FW9118FG

Complete with mesh grille

Other Known Part Numbers: 98-9118



6. Top Cap – Roadside

FW8967FG

Other Known Part Numbers: 98-8967



7. Top Cap –Curbside

FW8966FG

Other Known Part Numbers: 98-8966



8. Top Center Door

FW9116FG

Other Known Part Numbers: 989116



SIZE, WEIGHT & DIMENSIONS

FW #	OEM #	Item/Description	length inches	width inches	height inches	weight lbs.
Thermo King Compatible Doors & Panels SB II/III						
FW3030	98-2747	SB-II/III Curbside Front Door	33	6	32	13
FW3031	98-3031	SB-II/III Roadside Front Door	33	6	32	14
FW4489FG	98-5401	SB-II/III Roadside Front Door, lower latch assy	33	6	32	14
FW2748	98-2748	SB-II/III Lower Curbside Panel	33	6	20	10
FW4478P	98-4478	SB-II/III Lower Curbside Panel (Replaces Plastic)	31	6	20	8
FW2978	98-2978	SB-II/III Lower Roadside Panel	33	6	20	5
FW4487P	98-4487	SB-II/III Lower Roadside Control Panel (Replaces Plastic)	31	6	20	8
FW3032	98-5283	SB-II/III Top Center Door	52	6	37	33
FW2747	98-2747	SB-II/III Top Cap	76	12	21	16
Thermo King Compatible SB200 Series						
FW5755FG	98-6769	SB200 Top Cap	25	12	79	17
FW5757FG	98-7059	SB200 Top Center Door	58	6	34	30
FW7078FG	98-7078	SB200 Roadside Control panel (smaller opening)	43	5	31	17
FW7057FG	98-7057	SB200 Bottom Pan	77	5	24	24
FW5761FG	98-7079	SB200 Roadside Panel (large opening)	43	5	31	15
FW5762	98-5762	SB200 Curbside Panel	43	5	31	16
FW5763FG	98-5763	SB200 Curbside Front Door	43	5	31	17
FW5764FG	98-7058	SB200 Roadside Front Door	43	5	31	18
FW7302FG	98-7302	SB200 Honeycomb Grille Curbside	48	25	7	16
FW7474FG	98-7197	SB200 Honeycomb Grille Roadside	48	25	7	16
Compatible Carrier Doors & Panels						
FW1301FG	1301	Ultra Roadside Lower Center Front Door	43	5	30	17
FW1302FG	1302	Ultra Curbside Lower Center Front Door	43	5	30	17
FW1358FG	1358	Ultra Lower Curbside Panel	43	5	30	17
FW1314FG	1314	Ultra Lower Roadside Panel	33	6	20	12
FW1201FG	RS1201FG	Carrier Supra Panel				
Thermo King SPECTRUM S-3 Unit Compatible Panels						
FW1448FG	92-1448	Evaporator Cover S-3 Back	46	7 1/2	27	19
FW1450FG	92-1450	Evaporator Cover S-3 Front	25	13	32	11
Compatible Hinge Set for Thermo King SB Units						
FWR2T63		Hinge Set For FW5763				
FWR2T64		Hinge Set For FW5764				
FWR2T61		Hinge Set For FW5761 & FW7078				
FWR2T62		Hinge Set For FW5762				

fw Reefer

1-877-623-5338

sales@fwreefer.com

SIZE, WEIGHT & DIMENSIONS

FW #	OEM #	TK Precedent Compatible Doors & Panels	Length inches	Width inches	Height inches	Weight lbs.
FW1224	93-1224	Bottom Pan	84	4.5	25	24
FW9120	98-9120	Roadside Center Door	33	6	32	13
FW9121	98-9121	Curbside Center Door	33	6	32	14
FW9122	98-9122	Roadside Outer Door	43	5	31	14
FW9123	98-9123	Curbside Outer Door	43	5	31	14

fw Reefer



THERMO KING & CARRIER COMPATIBLE REPLACEMENT DOORS & PANELS

Lower Priced • Exact Fit • High Quality

FW Reefer offer less expensive price point options for aftermarket replacement fiberglass doors and panels in the refrigeration trucking industry. Our Entire product of reefer doors and panels are made to fit the exact specifications of OEM originals but at a fraction of the cost

FW Reefer doors and panels are reinforced with steel for superior strength and durability, and each reefer door and panel is meticulously painted in a gel-coat automotive finish. There are no modifications necessary on any item in our product line. We offer worldwide shipping for our products to better serve you.

CONTACT US TODAY FOR FURTHER DETAILS



Visit www.fwreefer.com to view or full online catalogue



1-877-623-5338

FW Reefer 6810 Kitimat Road Unit #28
Mississauga, Ontario L5N 5M2 Canada
Tel: 905-362-9333 Fax: 905-817-1987 Toll Free: 1-877-623-5338
Email: sales@fwreefer.com Online: www.fwreefer.com



www.fleetwide.ca

All trademarks, patented processes, product names, and company names or logos used or appearing on this catalogue are the property of their respective owners. Appearance of or reference to any company, products, services, processes or other information, by trade name, trademark, logo, manufacturer, supplier or otherwise does not constitute or imply endorsement, sponsorship or recommendation by FW Reefer