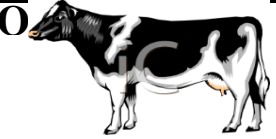


LIVESTOCK COOPERATIVE MARKET ASSOCIATION OF

NORTH JERSEY, INCORPORATED

225 WEST STIGER ST HACKETTSTOWN, NJ 07840

MAY 10th 2022



While Market reports reflect the majority of livestock sold, there are instances where animals do not fit reporting categories and may not be included

LIVESTOCK REPORT

Animal		NO.	HIGH	LOW
Calves	lb	9	1.50	0.40
Cows	lb	9	0.88	0.30
Easy Cows	lb			
Steers	lb	7	1.47	0.52
Feeders	lb	6	1.87	0.40
Bulls	lb	1	1.01	1.01
Heifers	lb	9	1.30	0.95
Roasting Pigs	lb	1	1.17	1.17
Boars	lb			
Sows	lb			
Butcher Hogs	lb			
Sheep	lb	26	3.05	1.00
Lambs	lb			
Roasting Pigs	hd			
Pot Belly	hd			
Sheep Family	hd			
Sheep	hd			
Lambs	hd			
Billy	hd	1	100.00	100.00
Goats	hd	9	390.00	80.00
Kids	hd	16	210.00	25.00
Rams	hd			
Alpaca	hd			
TOTAL		94		

POULTRY REPORT

Animal		No.	HIGH	LOW
Rabbits	lb	1	2.00	2.00
Broilers	lb			
Brown Eggs		15	3.00	1.50
Duck Eggs		1	3.00	3.00
Blue/ Green Eggs		9	3.00	2.25
Goose Eggs				
Quail Eggs		1	2.00	2.00
Bantam	hd	1	2.00	2.00
Broiler	hd			
Bunnies	hd	3	12.00	3.00
Chicks	hd	86	4.00	0.50
Ducks	hd	11	55.00	3.50
Misc Items	hd	39	42.50	3.00
Guinea Fowl	hd	4	14.00	14.00
Guinea Pigs	hd			
Heavy Fowl	hd			
Silkies	hd	6	13.00	3.00
Roosters	hd	21	26.00	5.00
Pheasant	hd			
Pigeons	hd	70	8.00	3.00
Pullets	hd	78	16.50	1.00
Quail	hd			
Rabbits	hd	3	12.00	12.00
Turkeys	hd	1	45.00	45.00
Chucker	hd			
Goose	hd			
Peacock	hd	1	115.00	115.00
Call Ducks	hd			

HAY REPORT

TYPE OF HAY	No. loads	HIGH	LOW
Alfalfa	1	7.25	7.25
Mixed	9	8.00	3.75
Orchard	1	4.25	4.25
Timothy	2	5.00	3.50
Grass	20	6.50	2.75
Mulch	3	3.25	1.25
Clover			

LARGE ROUND BALES

TYPE OF HAY	No. Bales	HIGH	LOW
Alfalfa			
Grass			
Mixed			

STRAW REPORT

TYPE OF STRAW	No. Loads	HIGH	LOW
Oat	2	5.75	4.50
Wheat			
Rye			

GRAIN REPORT

TYPE OF GRAIN	NO. OF BAGS	HIGH	LOW
Ground Corn	32	8.50	8.50
Shell Corn			
Oat Feed	24	7.00	7.00

MISC FARM RELATED CONSIGNMENT

ITEM	NO.	HIGH	LOW
Firewood			
Posts			

SALE SCHEDULE: 10am Hay 1030am Poultry
2pm Goats, Lambs/Sheep Calves, Feeders, Hogs
and Cattle (we run straight through)