



[Table Bases](#)

[Desktop Sit-Stand Solutions](#)

[Task Lighting](#)

[Monitor Arms](#)

[Keyboard Solutions](#)

[Accessories](#)

Proudly providing ergonomic products for over 35 years

Table of Contents

Table Bases/Base Accessories

Pg-2 Quickie-2 Deluxe Electric Table

Pg-3 Quickie-3 Deluxe Electric Table

Pg-5 Quickie Drawer

Pg-5 Quickie Power Bar

Pg-6 Quickie Power USB Module

Pg-6 Quick Link 360

Desktop Sit-Stand Solutions

Pg-7 Volante-Standard 36" Desktop Sit-Stand Workstation

Pg-7 Volante-Heavy Duty 42" Desktop Sit-Stand Workstation

Pg-8 Corner Desktop Sit-Stand Workstation

Pg-8 Altissimo Desktop Sit-Stand Workstation

Task Lighting

Pg-9 Deluxe Phosphorescent Task Light Series

Pg-9 Deluxe LED Task Light Series

Pg-10 Budget LED Task Light Series

Pg-10 LED Desk Lamp

Monitor Arms

Pg-11 Infinity-1 - Single-Screen, Cylinder Assist Monitor Arm

Pg-12 Infinity-2 - Dual-Screen, Cylinder Assist Monitor Arm

Pg-13 Single-Screen, Double Extension Dual Height Monitor Arm

Pg-13 Dual-Screen, Double Extension Dual Height Monitor Arm

Pg-14 Single-Screen, Double Extension Monitor Arm

Pg-14 Dual-Screen, Single Extension Monitor Arm

Pg-15 Triple-Screen Parabolic Hub Monitor Arm

Pg-15 Parabolic Octo-Screen, Beam Mount Monitor Arm

Keyboard Solutions

Pg-16 Strat-Plat Trackless Keyboard and Arm

Pg-16 Slimline Natural Keyboard Support System

Pg-17 Slimline All-in-One Keyboard Support System

Pg-17 Slimline 27" All-in-One Phenolic Keyboard Platform tray

Accessories

Pg-18 Anti-Fatigue Mat

Pg-18 Adjustable iPad Holder Arm

Pg-19 Adjustable Laptop Arm

Pg-19 Pencil Drawer Organizer

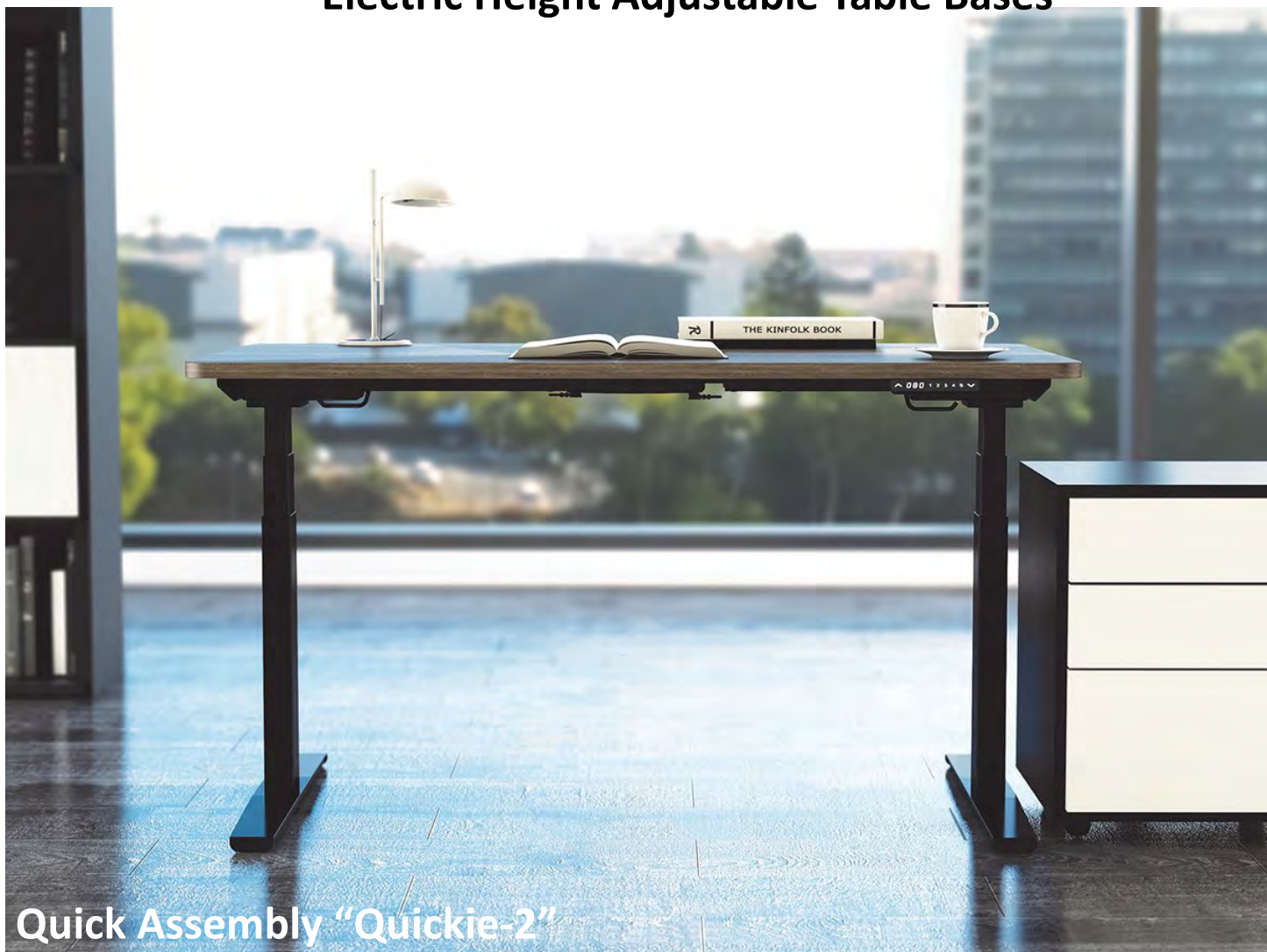
Pg-20 CPU Cart

Pg-20 Retractable Strap CPU Holder

Healthcare

Pg-21 Deluxe Wall-Mount System

Electric Height Adjustable Table Bases



Quickie-2

3-stage

List \$1,260

Quickie-2

2-stage

List \$1,125

- 3 Stage Height Adjustment 22.6" - 48.7"
- 2 Stage Height Adjustment 26" - 45¾"
- Dual Motors with Low Noise Level
- Three Memory Position Digital Control
- Anti-Collision Protection
- Super Quick Installation
- Adjusts to Fit Table Tops 42" - 80"
- Supports Up to 225 Pounds
- 24" or 30" Feet
- Black, Silver, or White Color Options
- UL Listed
- Base Only
- No Minimum Quick Ship
- Lifetime Warranty



Quick Assembly "Quickie-3"

Table Bases

- 3 Stage Height Adjustment Range (22.7" to 48.8")
- Three memory/six button programmable switch and controls. One touch or hold and release memory position options
- Low 48 dB noise level
- A standard 'C' leg configuration increases under table space
- Three table motors only use a combined 0.06W of standby power when not in use
- Can be assembled in 90°, 120 ° and in-line
- Leg motors have Anti-Collision protection for greater safety
- The table frame kits can easily be adjusted to fit different table top widths (42" to 91")
- Exceeding most industry standards, supports up to 300 lbs
- 24" deep or 30" deep foot
- Super Quick Installation
- Provides a contemporary modern design feel to any office environment
- Lifetime Warranty
- Bases Only
- UL and BIFMA Certified
- No Minimum Quick Ship
- Lifetime Warranty

Table Bases

Quickie Series—Accessories

Q-Drawer Quickie Storage Drawer

- Sleek low profile drawer designed for electric height table bases
- Ball bearing slides
- 8" depth
- Removable tray that slides across the drawer that holds accessories or personal items
- Available in 3 colors: Silver, Black or White
- **Q-Drawer List \$160**



QPB Quickie Power Bar



- 21", 48" and 60"; custom lengths available
- 8 total AC Receptacles; 120V, 15A
- Dual Orientation Mounting; includes 4 mounting screws
- 6' or 10' PVC cord; straight, grounded plug
- Built-in Circuit Breaker
- Tamper-Resistant Outlets are available as a option
- Steel and plastic
- UL962A listed; Canada C22.2 308-18; TAA

QPB List \$280

Table Bases

Quickie Series—Accessories

Quickie Power USB Module

- USB-A Charging Ports (1.5A and 2.A)
- USB-C Charging Port (supports PD protocol; 60W)
- Choose from power cord or hardwire option
- 6' or 10' PVC cord in white or black, straight grounded plug
- Optional 10' woven cord available in 4 colors, with 45° flat, low-profile plug
- 6' flexible steel, 3-wire conduit; 3/8" diameter
- Straight; 90° also available
- Clamp, under-surface, or in-surface
- Powder-coated aluminum
- UL 962A listed; UL 1310 listed power supply; Canada C22.2 308-18; FCC CFR-47 Part 15 Class A; TAA; USB ports compliant to USB-IF BC 1.2

QPUSE List Price \$290



Quick Link 360 Cable Manager



- 50 Q Link 360 elements
- 1 Quad Connector
- 1 Dumbbell Connector
- 1 Foot Assembly
- Used for height-adjustable mechanisms up to 51" height
- Available in 3 color options: Silver, Black and White

Quick Link 360 List \$210

Desktop Sit-Stand Solutions

Volante Standard



- Ships fully assembled
- Compact footprint allowing it to fit onto a 24" deep desk
- Gas assisted height adjustment provides smooth, quiet height adjustment
- Primary work surface can be extended 20" above the desk
- Large useable primary work surface accommodates 2 x 24" monitors, monitor arms, an iMac or laptop computer
- 20° of keyboard surface tilt allows the user to adjust the keyboard surface tilt from -10°/+10°
- Keyboard surface adjusts with the primary work surface for Improved ergonomics
- Primary work surface grommet allows for cable management and attachment of a monitor arm
- Supports up to 35 lbs.. Strong enough to support users requirements
- Weighs 40 lbs. Light enough for simple installation and moving
- Available in Black or White color

Volante List Price \$800

Volante Corner Sit-Stand Station

- Ships fully assembled. No tools required for installation
- Designed to fit 90° corner desk applications
- 42" wide useable primary work surface accommodates 2 x 27" monitors, monitor arms or laptop with monitor
- Single paddle gas assisted height adjustment provides smooth, quiet and infinite height adjustment
- Primary work surface can be extended 20" above the desk
- 20° of keyboard surface tilt allows the user to infinitely adjust the keyboard surface tilt from -10°/+10°
- Clip-on mouse fence and cable manager
- Keyboard surface adjusts with the primary work surface for Improved ergonomics
- Three primary work surface grommet holes
- Supports up to 35 lbs.. Strong enough to support users technology requirements
- Weighs 42 lbs. Light enough for simple installation and moving from desk-to-desk
- Available in Black

Volante-C List Price \$1,100



Desktop Sit-Stand Solutions

Volante Heavy-Duty



- Ships fully assembled. No tools required for installation
- Large 42" wide useable primary work surface accommodates 2 x 27" monitors, monitor arms or laptop with monitor
- Compact footprint allowing it to fit onto a 24" deep desk
- Single paddle gas assisted height adjustment provides smooth, quiet height adjustment
- Primary work surface can be extended 20" above the desk
- 20° of keyboard surface tilt allows the user to infinitely adjust the keyboard surface tilt from -10°/+10°
- Clip-on mouse fence and cable manager
- Keyboard surface adjusts with the primary work surface for Improved ergonomics
- Three primary work surface grommet holes
- Supports up to 45 lbs.. Strong enough to support users requirements
- Weighs 43 lbs. Light enough for moving from desk-to-desk

Volante HD List Price \$1,000

Altissimo



- 22" of gas assisted positioning, the Altissimo moves easily and effortlessly from seated to standing positions
- Cleverly mounts at the rear of the work surface for added desk space
- Comes with 9.5" of counter balanced height adjustment, 45° of tilt, and 90° of portrait to landscape rotation
- The Altissimo accommodates installed technology ranging from 5 to 25 lbs
- Dual monitor version supports most 24" monitors weighing 8 lbs each
- Standard grommet and clamp mounting supplied
- Dual tray system offers a spacious keyboard and mouse platform with adjustable tilt
- Secondary surface for placing items which need to remain close at hand
- Single and dual monitor versions
- Available in Black, Silver or White

Altissimo List Price

\$1,300 (Single Monitor)

\$1,480 (Double Monitor)

Task Lighting

Deluxe Task Light



- T5 Tri-phosphor lamps 3500K
- Normal power electronic ballast
- 9' black cord
- Prismatic acrylic lens
- High gloss UV reflector
- Standard color black
- Custom colors available
- Hardware included
- Daisy chaining option available
- ETL, TAA and BAA certified

Deluxe Task Lighting

- **DST24:** for 30" - 36" Shelf List \$210
- **DST36:** for 42" - 48" Shelf List \$225
- **DST48:** for 54"-60" Shelf List \$380

Deluxe LED Task Lighting

- High quality, long lasting LED luminaires rated at 50,000 hrs
- Single touch on/off switch with 15%-100% continuous dimming with last state memory
- 3500K color "temperature" in the optimum neutral range for office work
- Auto turn off after 10 hours of use
- Clear anodized aluminum housing with white end caps
- 9' cord with 15 watt power supply (LEDT17) and 12' foot cord with 60 watt power supply (LEDT31, LEDT44, and LEDT58)
- Screw and magnetic mounting hardware included
- Other options include daisy chaining and occupancy sensor
- Available in four sizes (17", 31", 44", 58")

Deluxe LED Task Lighting

- **LEDT17:** for 24" -36" Shelf List \$248
- **LEDT31:** for 42" - 48" Shelf List \$372
- **LEDT44:** for 54"-60" Shelf List \$565
- **LEDT58:** for 72"+ Shelf List \$640



Task Lighting

Budget LED Task Light



- High quality LED fixture
- Four lengths to choose from 12", 22", 32" and 42"
- Single touch on/off
- End-End interconnect (push together)
- LED rated lifespan of 50,000 hours
- Color temperature 3500K
- Silver color finish
- 18 watt wall transformer with 9' black cord
- Magnetic and screw mounting both included with 2 cord managers

Budget LED Task Lighting

- LEDE12: for 24" Shelf List \$168
- LEDE22: for 30" - 36" Shelf List \$210
- LEDE32: for 42"-48" Shelf List \$260
- LEDE42: for 54"-60" Shelf List \$350

LED Task Light

Single Arm
Freestanding Base
5-Step Dimming; 100% - 25%
6.6 System Watts
4000K Color Temperature
350 lumens output
50,000 hour LED Lifespan
24 Total LEDs
6' 2" Black Power Cord
USB Charging Port; Type A
Aluminum and plastic materials
ETL listed; compliant to UL 153 & CSA
C22.2 No. 250.

LED Task Light LEDDM List Price \$310



Monitor Arms

Infinity-1 - Single-Screen, Cylinder Assist Monitor Arm

- Comes with clamp and grommet mount, ideal for all desk mounting configurations, minimizing SKU's
- Adjustable counterbalance cylinder provides smooth 14 ½" of height adjustment with fingertip control
- Infinity-1-L series counterbalances monitors from 5 lbs. to 20 lbs.
- Infinity-1-H series counterbalances monitors from 10 lbs. to 30 lbs.
- Double extension arms provide a maximum of 26 ¾" extension from the rear edge of the mounting surface to the VESA Plate for greater monitor adjustment on deep or corner workstations
- Arms fold back to a minimum dimension of 4 1/2" to provide maximum desk utilization
- Monitor mounting bracket contains both 75mm and 100mm hole patterns to comply with VESA standards
- Patented Quick Connect allows fast, simple assembly
- Weight gauge provided to allow for quick and easy counterbalance adjustment of the arm prior to installing the screen. Saves time and guesswork especially for multiple arm installations
- VESA Plate rotates for portrait or landscape viewing with 180° side to side rotation and -90° to +45° tilt for optimal viewing adjustment
- Die cast aluminum construction provides greater stability and contains high recycled material content with full recyclability
- Adjustable rotation limiter to restrict arm rotation to 180°, preventing arms from hitting walls
- Multiple color choices include Silver, Black and White to match any furniture or decor

1Inf List Price \$480



Monitor Arms

Infinity-2 - Dual-Screen, Cylinder Assist Monitor Arm

- Comes with clamp and grommet mount, ideal for all desk mounting configurations, minimizing SKU's
- Adjustable counterbalance cylinder provides smooth 14 ½" of height adjustment with fingertip control, counterbalancing monitors with a combined weight from 15 lbs. to 40 lbs.
- Double extension arms provide a maximum of 30 ¾" extension from the rear edge of the mounting surface to the VESA Plate for greater monitor adjustment on deep or corner workstation
- Arms fold back to a minimum dimension of 8 ¾" to provide maximum desk utilization
- Monitor mounting bracket contains both 75mm and 100mm hole patterns to comply with VESA standards
- Support beam holds dual 23" monitors at a 25° booking angle for improved ergonomic viewing comfort
- Patented Quick Connect allows fast, simple assembly
- Weight gauge provided to allow for quick and easy counterbalance adjustment of the arm prior to installing the screen. Saves time and guesswork especially for multiple arm installations
- VESA Plate rotates for portrait or landscape viewing with 180° side to side rotation and -90° to +45° tilt for optimal viewing adjustment
- Die cast aluminum construction provides greater stability and contains high recycled material content with full recyclability
- Adjustable rotation limiter to restrict arm rotation to 180°, preventing arms from hitting walls
- Multiple color choices include Silver, Black and White to match any furniture or decor

2Inf List Price \$650



Cable Management



Weight Gauge



Height Adjustable

Monitor Arms

7915H Single-Screen, Double Extension Dual Height Monitor Arm

- Patented Quick Connect allows fast, simple assembly
- 24" of back and forth movement
- 24" of height adjustment for sit to stand applications
- The arm swivels 360° around the base, increasing the options for display position
- Desk clamp and grommet mount hardware are included to minimize SKUs
- Clamp and grommet adjustable to fit most desks and work surfaces
- Monitor mounting bracket contains both 75mm and 100mm hole patterns to comply with VESA standards
- 180° tilt, 180° side-to-side, and 360° landscape-to-portrait movement
- A choice of finishes - Silver or Black
- Cable management system

7915H List Price \$380



7920H Dual-Screen, Double Extension Dual Height Monitor Arm



- Patented Quick Connect allows fast, simple assembly
- 24" of back and forth movement
- 24" of height adjustment for sit to stand applications
- The arm swivels 360° around the base, increasing the options for display position
- Desk clamp and grommet mount hardware are included to minimize SKUs
- Clamp and grommet adjustable to fit most desks and work surfaces
- Monitor mounting bracket contains both 75mm and 100mm hole patterns to comply with VESA standards
- 180 ° tilt, 180° side-to-side, and 360° landscape-to-portrait movement
- A choice of finishes - Silver or Black
- Cable management system

7920H List Price \$580

Monitor Arms

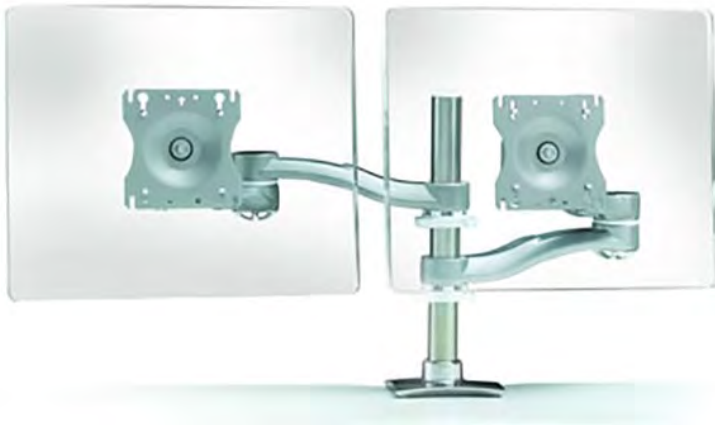
7915 Single-Screen, Double Extension Monitor Arm

- Patented Quick Connect allows fast, simple assembly
- 20" of back and forth movement
- The arm swivels 360° around the base, increasing the options for display position
- Includes Desk clamp and grommet mount hardware .
- Clamp and grommet adjustable to fit most desks and work surfaces
- Monitor mounting bracket contains both 75mm and 100mm hole patterns to comply with VESA standards
- Pole allows manual height adjustment through a 13" range
- 180° tilt, 180° side-to-side, and 360° landscape-to-portrait movement
- A choice of finishes - Silver or Black
- Cable management system

7915 List Price \$380



7920 Single-Screen, Single Extension Monitor Arm



- Patented Quick Connect allows fast, simple assembly
- 20" of back and forth movement
- The arm swivels 360° around the base, increasing the options for display position
- Desk clamp and grommet mount hardware are included to minimize SKUs
- Clamp and grommet adjustable to fit most desks and work surfaces
- Mounting bracket includes 75mm and 100mm hole patterns to comply with VESA standards
- Pole allows manual height adjustment through a 13" range
- 180° tilt, 180° side-to-side, and 360° landscape-to-portrait movement
- A choice of finishes - Silver or Black
- Cable management system

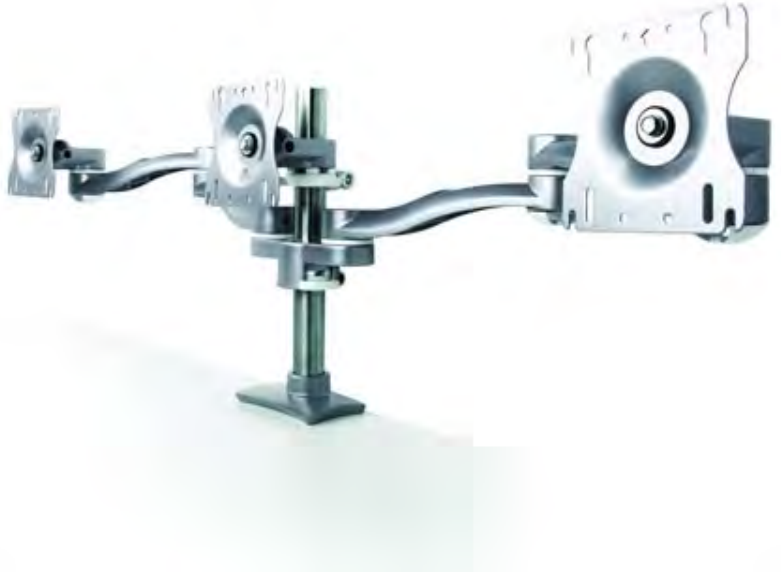
7920 List Price \$580

Monitor Arms

7930 Triple-Screen Parabolic

- Flexibility and more options with a simple, easy-to-use Allen wrench adjustment
- Supports a 20 lbs load capacity (per screen)
- The arm swivels 360° around the base, increasing the options for display position
- Options are available for panel, wall and slat-wall mounting configurations
- Desk clamp and grommet mount hardware are included to minimize SKUs
- Clamp and grommet adjustable to fit most desks and work surfaces
- Monitor mounting bracket, with Quick Connect, contains 75mm and 100mm hole patterns to comply with VESA standards
- Allows for a maximum 18" screen width. Custom configurations available for larger screens

7930 List Price \$680



7940 Parabolic Octo-Screen, Beam Mount Monitor Arm

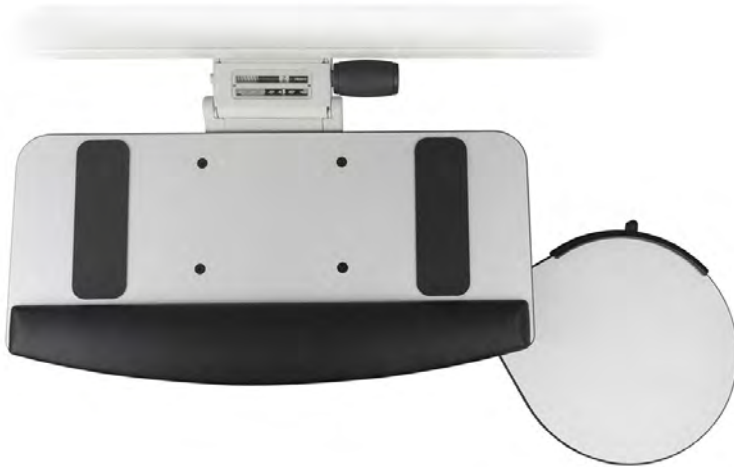
- Patented Quick Connect allows fast, simple assembly
- Width adjustment for various size monitors with individual tilt and pivot capability
- Desk clamp and grommet mount hardware are included to minimize SKUs
- Clamp and grommet adjustable to fit most desks and work surfaces
- Monitor mounting bracket contains both 75mm and 100mm hole patterns to comply with VESA standards
- A choice of finishes - Silver or Black
- Cable management system

7940 List Price \$840



Keyboard Solutions

STRAT-PLAT Trackless Keyboard and arm



- 19.4" X 9.4" white phenolic keyboard tray with 9" swivel mousing surface
- Anti-slip pads prevent keyboard movement when typing
- Gel-feel palm rest
- Lever free (Lift-N-Lock) white mechanism with tilt and height indicators
- +10° to -15° tilt angles, 360° of swivel
- Full storage in 9 3/8" undersurface space
- Exceeds HFES & BIFMA 5th percentile seated key-boarding heights (HFES 22" BIFMA 22.6")
- The Strat Plat provides a stylish decorative finish to enhance any modern office

STRAT-PLAT List Price \$520

Microsoft Natural™ Keyboard with Lever Free, Sit-Stand Arm

- 1/4" thin profile phenolic keyboard platform with swivel mouse
- Tray designed to fit Natural keyboards
- Tray dimensions: 19.5" Mouse: 9"
- Ergonomically shaped and stable
- Gel palm rest
- Anti-skid grip pads
- Mouse tray has built in mouse guard to help prevent mouse from falling
- Cable manager
- Available with 17 or 21" track

PMNPLFE17T List Price \$420

PMNPLFE21T List Price \$430



Keyboard Solutions

Slimline All-in-One Keyboard Support System



- 1/4" thin profile phenolic keyboard platform
- Tray dimensions: 27" X 10.75"
- Platform accommodates both keyboard and mouse
- Gel palm rest
- Ergonomically shaped and stable
- Mouse tray has built in mouse guard to help prevent mouse from falling
- Cable manager

DPPLFT17T List Price \$420

DPPLFT21T List Price \$430

Slimline Phenolic Keyboard Support System

- 1/4" thin profile phenolic keyboard platform with swivel mouse
- Ergonomically shaped and stable
- Gel palm rest
- Anti-skid grip pads
- Swing-out mouse tray has built in mouse guard to help prevent mouse from falling
- Mouse tray may be mounted left or right
- Cable manager

PHPLFT17T List Price \$420

PHPLFT21T List Price \$430



Accessories

STRAT-MAT Anti-Fatigue Mat



- Made of 3/4" thick 100% polyurethane foam
- Helps reduce leg and lower back fatigue
- Integral skin that is stain and puncture resistant
- Foot hold allows for simple mat positioning without having to bend over
- 18 degree beveled edge allows chair casters to easily roll over the mat edge
- Textured top and bottom surface providing anti-slip surface
- Meets RoHS directive (EU) 2015/863
- Dimensions: 18" x 30" x 3/4"
- Three Year warranty
- Satin black finish

STRAT-MAT List Price \$190

iPad Holder

- Adjustable iPad Holder that supports all iPad models
- Holds iPad upright in landscape or portrait views
- 24" of back and forth movement
- Clamp and grommet adjustable to fit most desks and work surfaces
- Stable steel cradle design
- Non-slip cushioned cradle holds the iPad firmly in place
- Cradle uses a cut-out style to accommodate cables
- Mounting hardware included

7915i List Price \$480



Accessories

Adjustable Laptop Arm



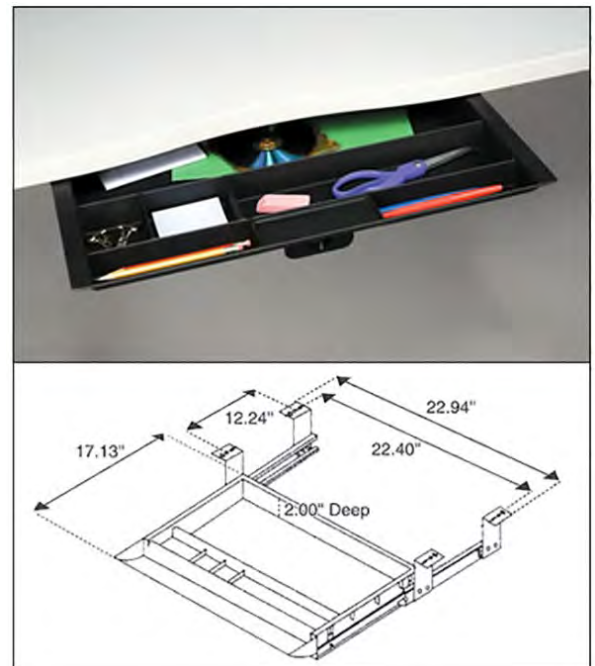
- Adjustable laptop holder for any size laptop
- 24" of back and forth movement
- 24" of height adjustment for sit to stand applications
- The arm swivels 360° around the base, increasing the options for display position
- Desk clamp and grommet mount hardware are included to minimize SKUs
- Clamp and grommet adjustable to fit most desks and work surfaces

7915LT List Price \$480

Pencil Drawer Organizer

- Durable black polymer construction
- Ball bearing slides
- Low profile
- Deep pockets for maximum storage
- Dimensions: 20.5"w X 19.25"d

PD List Price \$120



Accessories

Four-Wheeled CPU Holder



- Easy assembly
- CPU cart comes with 4 casters, 2 with brakes
- Adjustable for 3"-9.75" CPU's

DCPUC List Price \$126

Retractable Strap CPU Holder

- CPU retracts on a 17" track and swivels to allow full accessibility and easy storage
- Accommodates CPU's weighing up to 75 lbs and measuring 64" in perimeter
- Installation is quick and easy as straps adjust and fasten with buckles
- Retracts on a 17" teflon glide track
- Soft touch Anti-slip pads protect the CPU

CPUR-S List Price \$190



Healthcare

Deluxe Wall-Mount System



- 22" of height adjustment range
- 9.5" range of independent monitor " knob free " height adjustment
- Monitor float tower offers 180 degree of rotation
- Keyboard tray rotates independently allowing for seamless information sharing or full screen privacy
- Comes pre-assembled for easy fast installation
- Integrated wire management system for quick and neat wire installation
- Meets BIFMA and HFES requirements

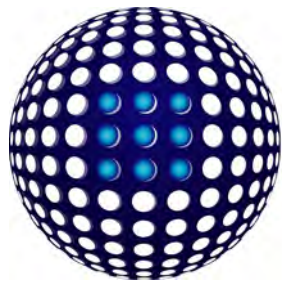
DWM List Price \$1,900

Optional: Rail-Mount CPU Holder

Left: Thin Profile, List Price \$270

Right: Fully Enclosed, List Price \$270





SYSTEMATIX

Proudly providing ergonomic products for over 35 years

5953 Commerce Road - Milton, FL 32583

Toll Free (800) 366-7873 Local (850) 983-2213 Fax (850) 983-1775 email info@systematix.org