

VALERIO MODA MASK PRO.2/ PATTERN



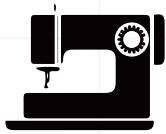
HOW TO MAKE A PROTECTIVE MASK - AN INSTRUCTIONAL GUIDE

VALERIO MODA MASK PRO.2/ PATTERN



WHAT YOU WILL NEED

SEWING MACHINE, IRON, NEEDLE, PIN, THREAD, CHALK OR PENCIL, SCISSORS, MATERIAL:



- A** *OUTER LAYER FABRIC 7"X 7" 2X* OPTIONS: 100% COTTON, SOFT DENIM T-SHIRT, SPORTSWEAR, POLO SHIRT, JERSEY, COTTON SHIRT
- B** *INNER LAYER FABRIC 7"X14" 2X* OPTIONS: 100% COTTON, T-SHIRT, POLO SHIRT, JERSEY, COTTON SHIRT
- C** *FILTER HOLDER FABRIC 3 1/2 " X 5 1/2 "* 2X OPTIONS: LINEN, COTTON, T-SHIRT
- F2** *FILTER MATERIAL 4"X 3" 2X & ELASTIC 10 1/2 " 2X*

PATTERN A:
OUTER LAYER
7"X 7"



PATTERN B:
INNER LAYER
7"X 7"



PATTERN C:
FILTER HOLDER
3 1/2"X 5 1/2"



PATTERN F2
FILTER 1:
4" X 3"



ELASTIC
10 1/2" X2



VALERIO MODA MASK PRO.2/ PATTERN



PATTERN A: OUTER LAYER 7"X 7"

A CUT X2

COTTON: SOFT DENIM
TECHNICAL SPORTSWEAR
JERSEY - T SHIRTING

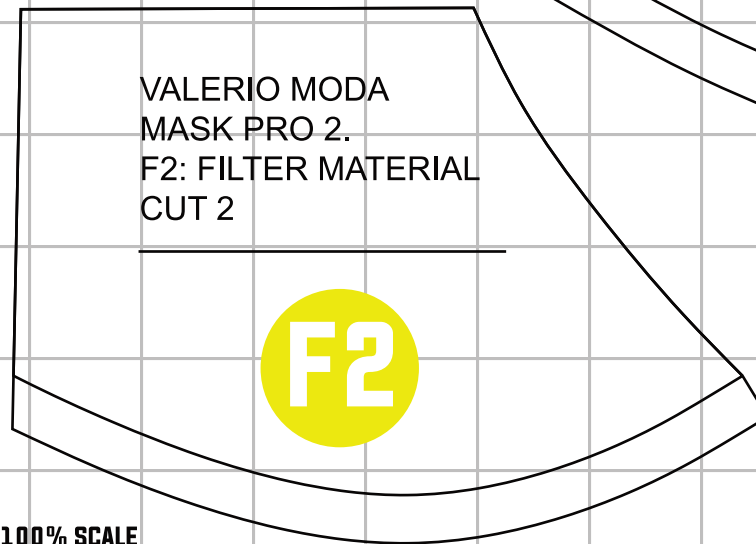
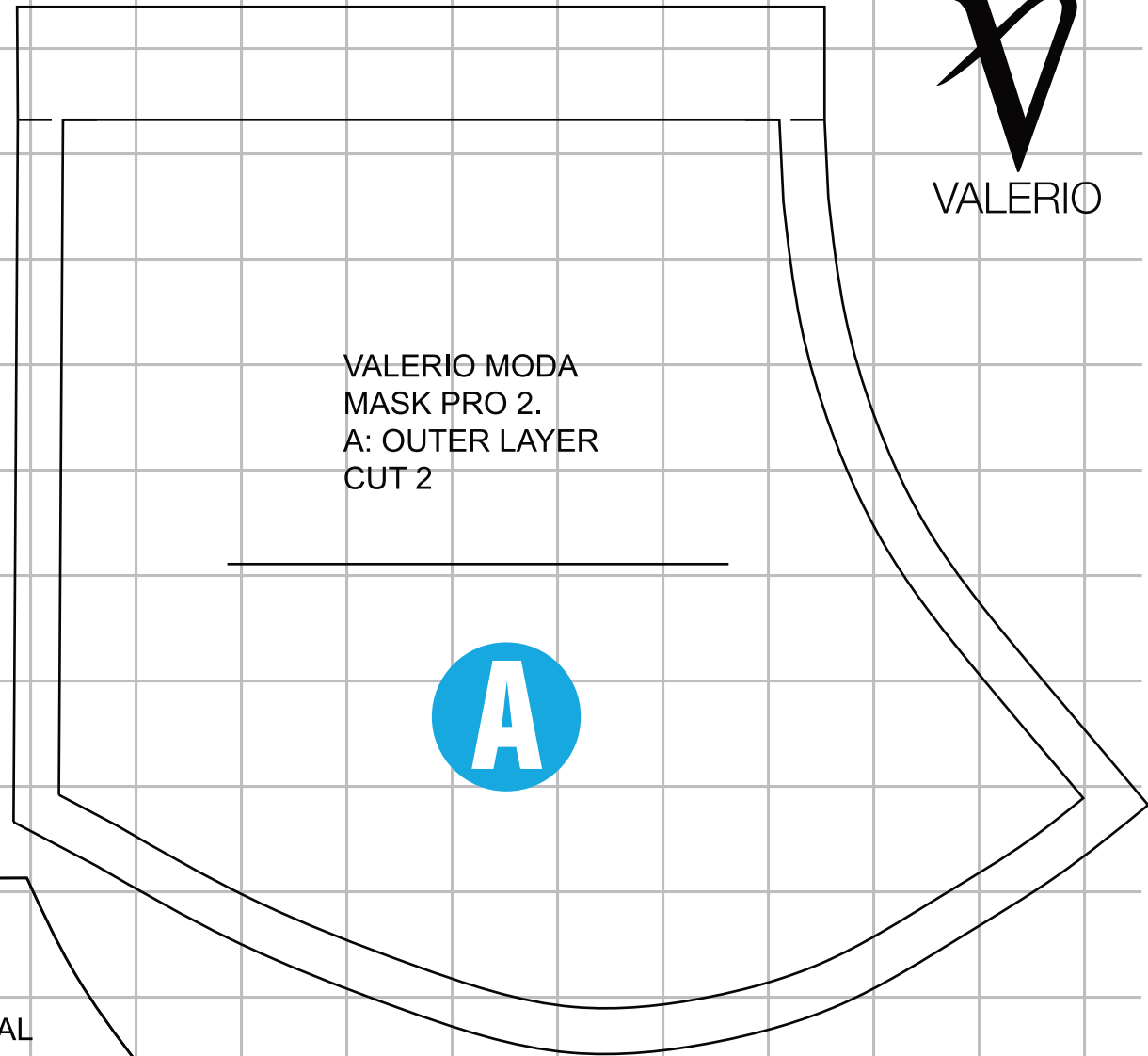
FILTER 1: 4" X 3"

F2 CUT X2

FILTER MATERIAL
4"X 3"



- **STEP 1:** MAKE SURE TO PRE-WASH THE FABRIC BEFORE START.
- IF YOU ARE USING FABRICS WITH A STRETCH PROPERTY MAKE SURE INNER AND OUTER LAYERS ARE EITHER BOTH STRETCH OR NOT, FOR THE BEGINNER IT IS BETTER TO NOT USE THE STRETCH FABRIC BECAUSE YOU CAN CONTROL IT EASIER.
- SKETCH YOUR DESIGN AND IDEA ON PIECE OF PAPER
- DOWNLOAD PATTERN FROM OUR WEBSITE:
WWW.VALERIOMODA.COM
- OR TRACE THE PATTERN ON GRAPH PAPER.
- CUT THE PATTERN ON FABRIC FOLLOW THE STRUCTURE ON PATTERN
- **STEP 2:** STITCH CENTER LINE AND PRESS ALLOWANCE OPEN
- **STEP 3:** FOLD INSIDE/ BASTE/ PRESS AND TOP STITCH FOLD THE HEM/ BASTE /TOPSTITCH
- FOLD ALL TO THE SIDES IN PRESS
- **STEP 4:** LAY INNER LAYER RIGHT SIDE. PLACE FILTER HOLDER ON B / PIN AND BASTE. STITCH ALL AROUND EXCEPT BOTTOM
- **STEP 5:** PLACE OUTER AND INNER LAYERS A+B FACE TO FACE/ PIN/ BASTE IT AND SEW TOP AND BOTTOM
- **STEP 6:** TURN THE MASK TO THE RIGHT SIDE/ PRESS THE EDGES/ TOPSTITCH TOP AND BOTTOM
- **STEP 7:** FOLD IN THE SIDES (ELASTIC POCKET) BASTE/ AND TOPSTITCH
- **STEP 8:** PLACE THE ELASTIC INTO THE SIDES (ELASTIC POCKET) JOIN THEN TOGETHER WITH HAND STITCH OR PIECE OF LEATHER.
- **STEP 9:** OPTIONAL: TAKE A SURGICAL MASK; TAKE THE TOP PART METAL PIECE AND PLACE TO THE FACE OF THE MASK AND HAND STITCH MIDDLE AND CORNERS
- **STEP 10:** OPTIONAL: CUT FILTER, SEW CENTER SEAM AND PLACE IT TO THE FILTER HOLDER



WHAT YOU WILL NEED

SEWING MACHINE, IRON, NEEDLE, PIN, THREAD, CHALK OR PENCIL, SCISSORS, MATERIAL:

OUTER LAYER FABRIC 7"X 7" 2X OPTIONS: 100% COTTON, SOFT DENIM T-SHIRT, SPORTSWEAR, POLO SHIRT, JERSEY, COTTON SHIRT

INNER LAYER FABRIC 7"X14" 2X
OPTIONS: 100% COTTON, T-SHIRT, POLO SHIRT, JERSEY, COTTON SHIRT

FILTER HOLDER FABRIC 3 1/2 " X 5 1/2 " 2X OPTIONS: LINEN, COTTON, T-SHIRT
FILTER MATERIAL 4"X 3" 2X & ELASTIC 10 1/2 " 2X

A4 - 100% SCALE

VALERIO MODA MASK PRO.2/ PATTERN



PATTERN B: INNER LAYER 7"X 7"

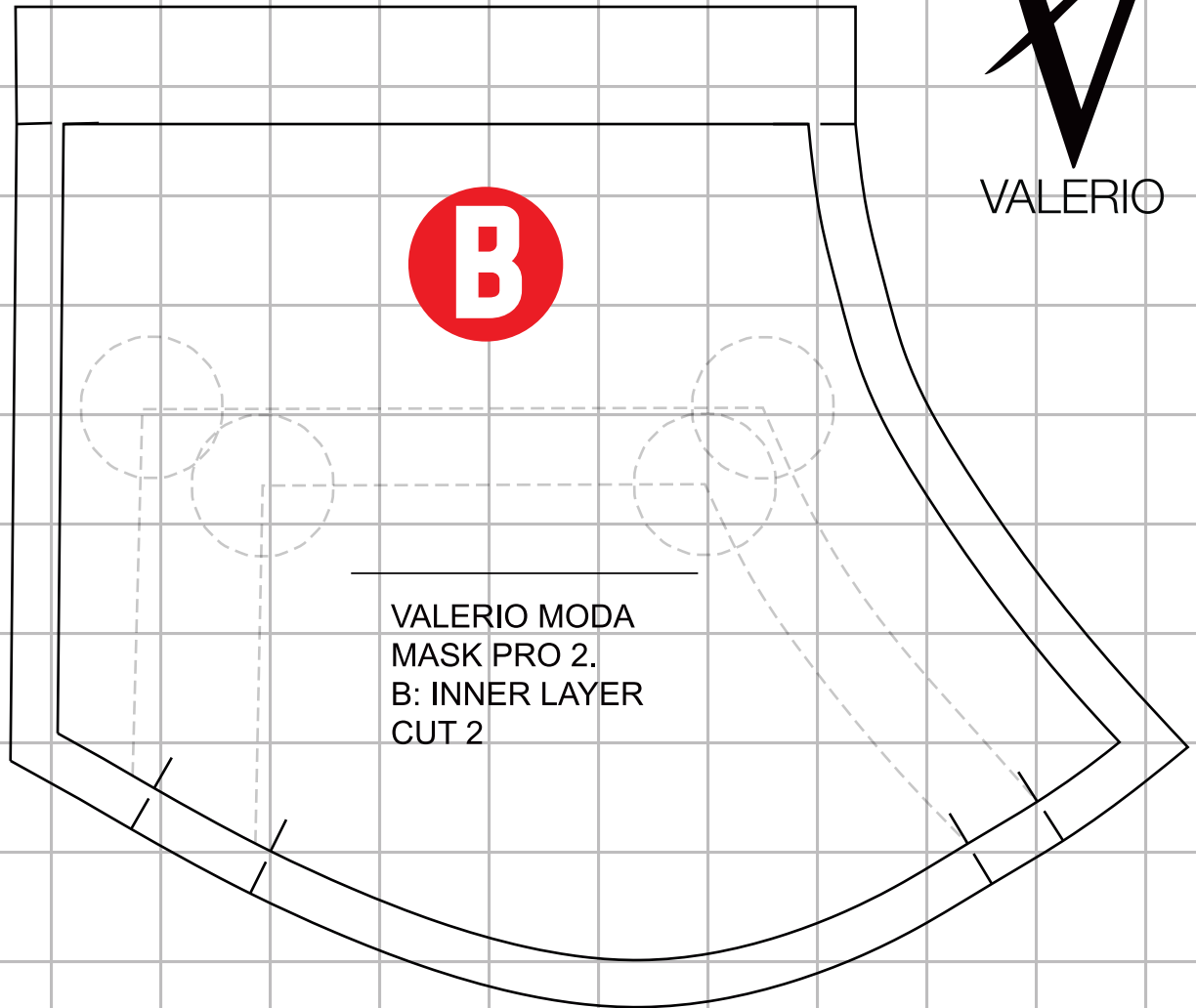
B CUT X2

- **STEP 1:** MAKE SURE TO PRE-WASH THE FABRIC BEFORE START.
- IF YOU ARE USING FABRICS WITH A STRETCH PROPERTY MAKE SURE INNER AND OUTER LAYERS ARE EITHER BOTH STRETCH OR NOT. FOR THE BEGINNER IT IS BETTER TO NOT USE THE STRETCH FABRIC BECAUSE YOU CAN CONTROL IT EASIER.
- SKETCH YOUR DESIGN AND IDEA ON PIECE OF PAPER
- DOWNLOAD PATTERN FROM OUR WEBSITE: WWW.VALERIDMODA.COM OR TRACE THE PATTERN ON GRAPH PAPER.
- CUT THE PATTERN ON FABRIC FOLLOW THE STRUCTURE ON PATTERN
- **STEP 2:** STITCH CENTER LINE AND PRESS ALLOWANCE OPEN

PATTERN C: FILTER HOLDER 3 1/2"X 5 1/2"

C CUT X2

- **STEP 3:** FOLD INSIDE/ BASTE/ PRESS AND TOP STITCH FOLD THE HEM/ BASTE /TOPSTITCH FOLD ALL TO THE SIDES IN PRESS
- **STEP 4:** LAY INNER LAYER RIGHT SIDE. PLACE FILTER HOLDER ON B / PIN AND BASTE. STITCH ALL AROUND EXCEPT BOTTOM
- **STEP 5:** PLACE OUTER AND INNER LAYERS A+B FACE TO FACE/ PIN/ BASTE IT AND SEW TOP AND BOTTOM
- **STEP 6:** TURN THE MASK TO THE RIGHT SIDE/ PRESS THE EDGES/ TOPSTITCH TOP AND BOTTOM
- **STEP 7:** FOLD IN THE SIDES (ELASTIC POCKET) BASTE/ AND TOPSTITCH
- **STEP 8:** PLACE THE ELASTIC INTO THE SIDES(ELASTIC POCKET) JOIN THEN TOGETHER WITH HAND STITCH OR PIECE OF LEATHER.
- **STEP 9:** OPTIONAL: TAKE A SURGICAL MASK; TAKE THE TOP PART METAL PIECE AND PLACE TO THE FACE OF THE MASK AND HAND STITCH MIDDLE AND CORNERS
- **STEP 10:** OPTIONAL: CUT FILTER, SEW CENTER SEAM AND PLACE IT TO THE FILTER HOLDER



VALERIO MODA
MASK PRO 2.
C: FILTER HOLDER
CUT 2



WHAT YOU WILL NEED

SEWING MACHINE, IRON, NEEDLE, PIN, THREAD, CHALK OR PENCIL, SCISSORS, MATERIAL:

OUTER LAYER FABRIC 7"X 7" 2X OPTIONS: 100% COTTON, SOFT DENIM T-SHIRT, SPORTSWEAR, POLO SHIRT, JERSEY, COTTON SHIRT

INNER LAYER FABRIC 7"X14" 2X
OPTIONS: 100% COTTON, T-SHIRT, POLO SHIRT, JERSEY, COTTON SHIRT

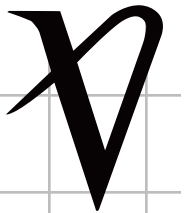
FILTER HOLDER FABRIC 3 1/2 " X 5 1/2 " 2X OPTIONS: LINEN, COTTON, T-SHIRT
FILTER MATERIAL 4"X 3" 2X & ELASTIC 10 1/2 " 2X

A4 - 100% SCALE

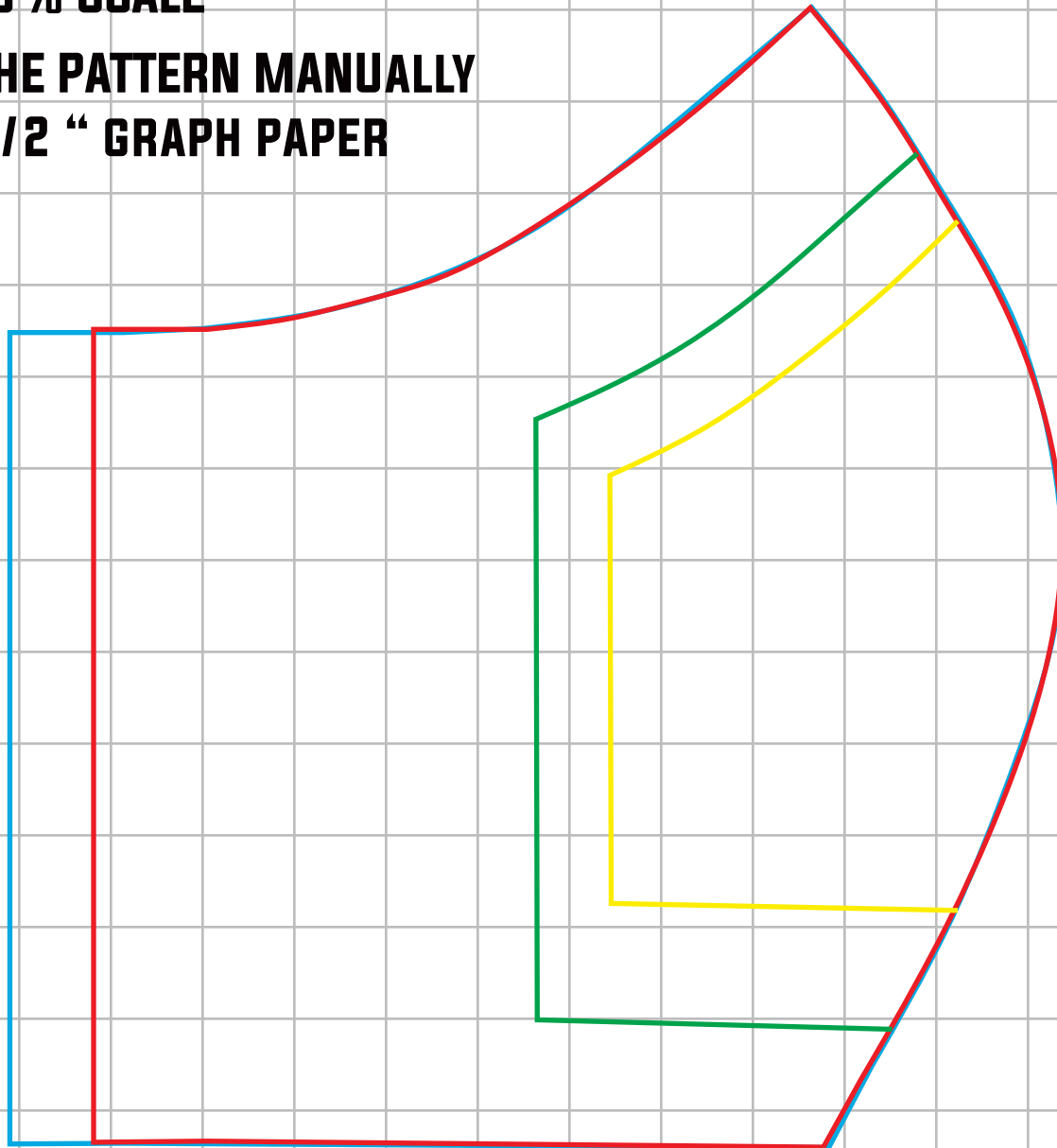
VALERIO MODA MASK PRO.2/ PATTERN LAYERING

A4 - 100% SCALE

TRACE THE PATTERN MANUALLY
USING 1/2 " GRAPH PAPER



VALERIO



A OUTER SHELL

B INSIDE LINING

C FILTER HOLDER

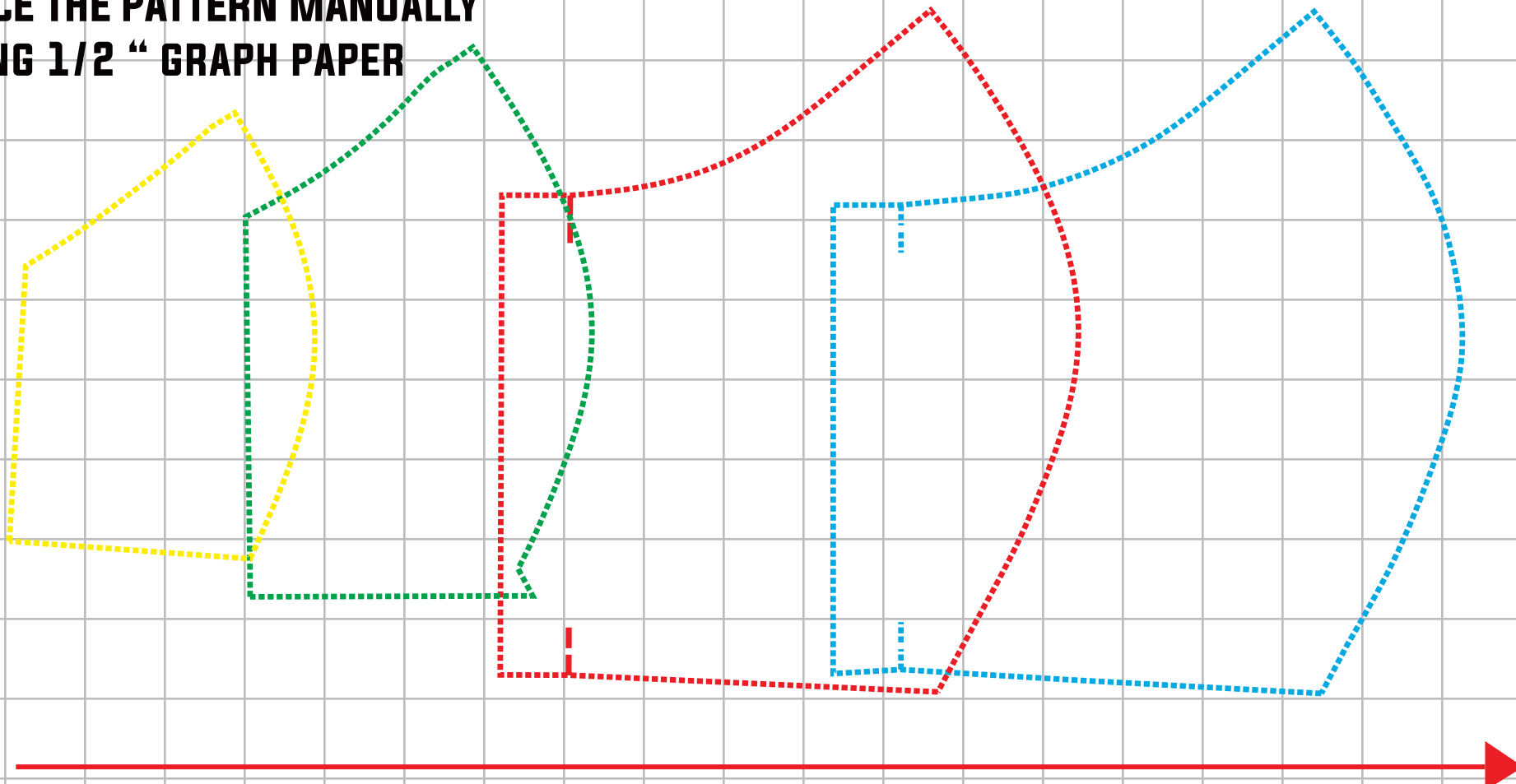
F2 SMALL FILTER

VALERIO MODA MASK PRO.2/ PATTERN ORDER

A4 - NOT TO SCALE



TRACE THE PATTERN MANUALLY
USING 1/2 " GRAPH PAPER



F2 SMALL FILTER

C FILTER HOLDER

B INSIDE LINING

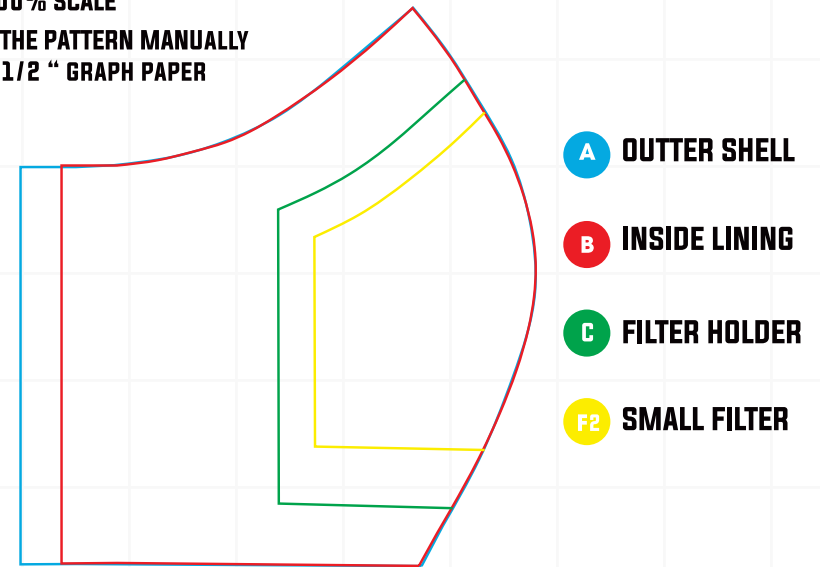
A OUTER SHELL

VALERIO MODA MASK PRO.2/ PATTERN



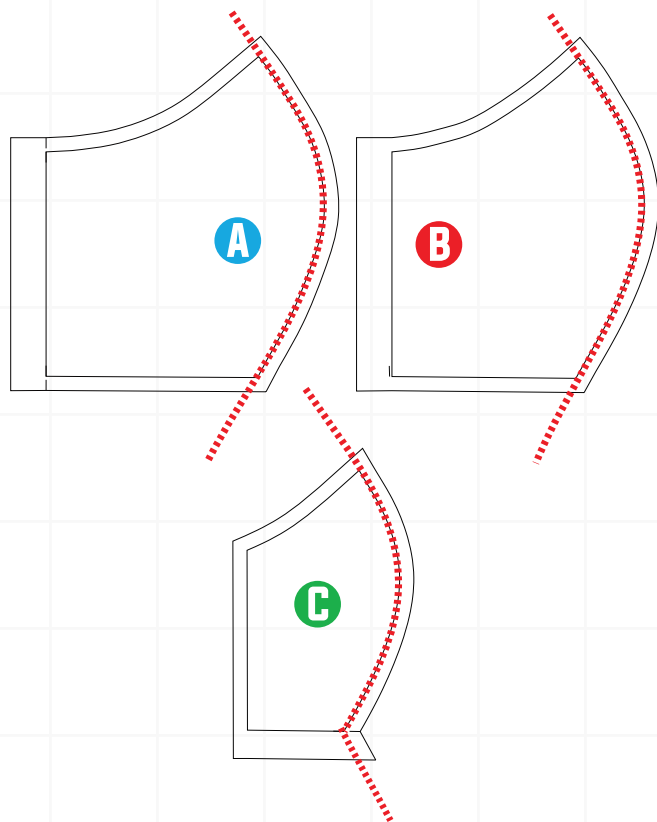
- **STEP 1: MAKE SURE TO PRE-WASH THE FABRIC BEFORE START.**
- **IF YOU ARE USING FABRICS WITH A STRETCH PROPERTY MAKE SURE INNER AND OUTER LAYERS ARE EITHER BOTH STRETCH OR NOT, FOR THE BEGINNER IT IS BETTER TO NOT USE THE STRETCH FABRIC BECAUSE YOU CAN CONTROL IT EASIER.**
- **SKETCH YOUR DESIGN AND IDEA ON PIECE OF PAPER**
- **DOWNLOAD PATTERN FROM OUR WEBSITE:
WWW.VALERIOMODA.COM**
- **OR TRACE THE PATTERN ON GRAPH PAPER.**
- **CUT THE PATTERN ON FABRIC FOLLOW THE STRUCTURE ON PATTERN**

VALERIO MODA MASK PRO.2/ PATTERN LAYERING
A4 - 100% SCALE
TRACE THE PATTERN MANUALLY
USING 1/2 " GRAPH PAPER



VALERIO MODA MASK PRO.2/ PATTERN

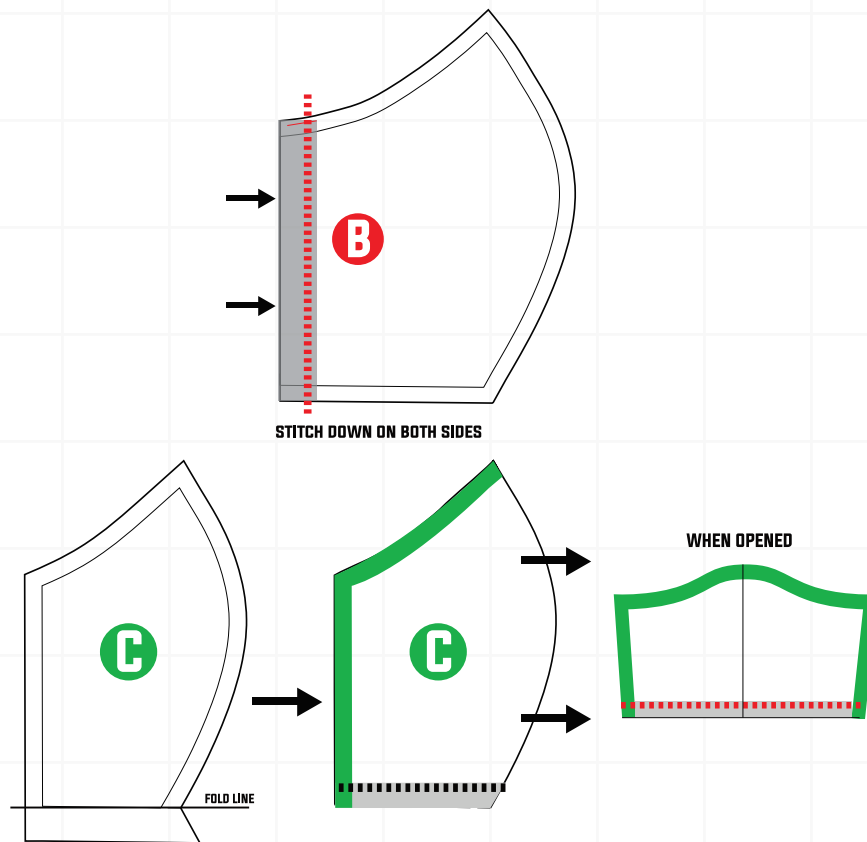
2.



- **STEP 2: STITCH CENTER LINE AND PRESS ALLOWANCE OPEN**



3.

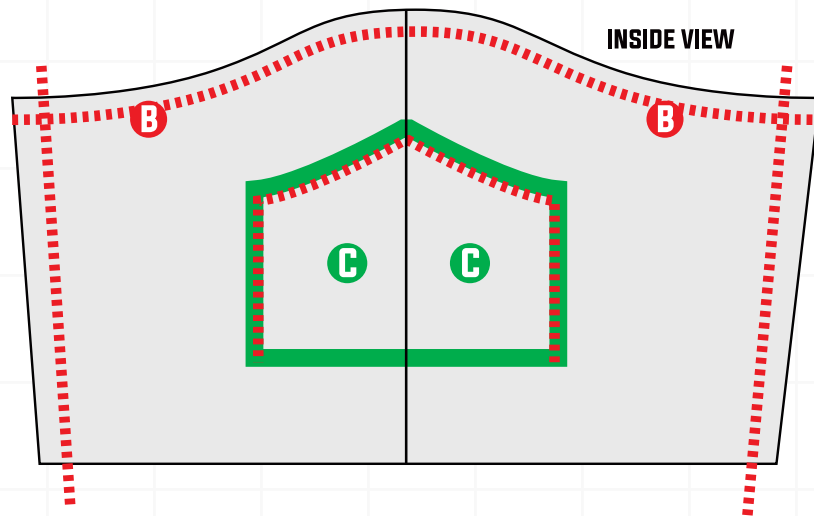


- **STEP 3: FOLD INSIDE/ BASTE/ PRESS AND TOP STITCH
FOLD THE HEM/ BASTE /TOPSTITCH**



VALERIO MODA MASK PRO.2/ PATTERN

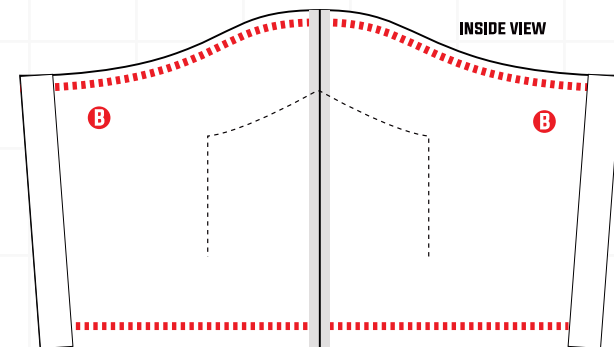
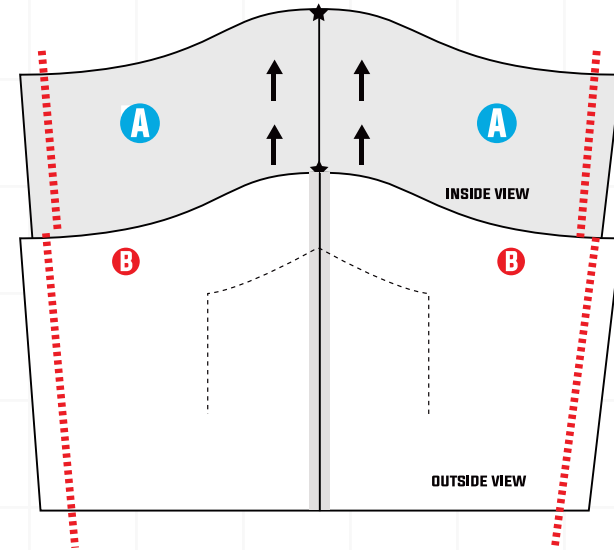
4.



- **STEP 4:** LAY INNER LAYER RIGHT SIDE. PLACE FILTER HOLDER ON B / PIN AND BASTE. STITCH ALL AROUND EXCEPT BOTTOM



5.

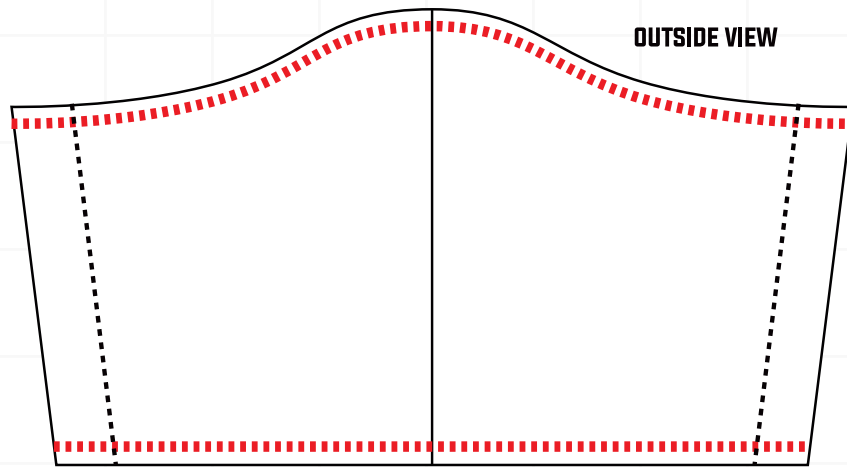


- **STEP 5:** PLACE OUTER AND INNER LAYERS A+B FACE TO FACE / PIN / BASTE IT AND SEW TOP AND BOTTOM



VALERIO MODA MASK PRO.2/ PATTERN

6.

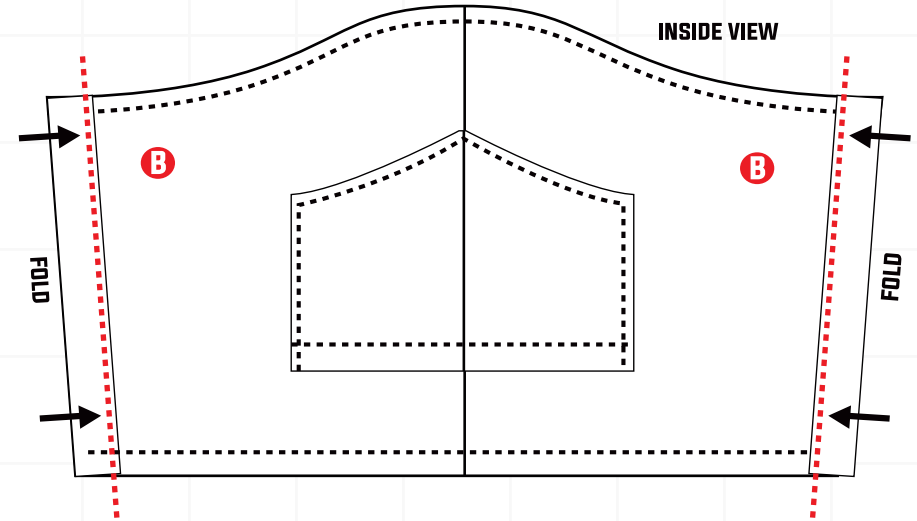


- **STEP 6:** TURN THE MASK TO THE RIGHT SIDE/ PRESS THE EDGES/ TOPSTITCH TOP AND BOTTOM

A B



7.



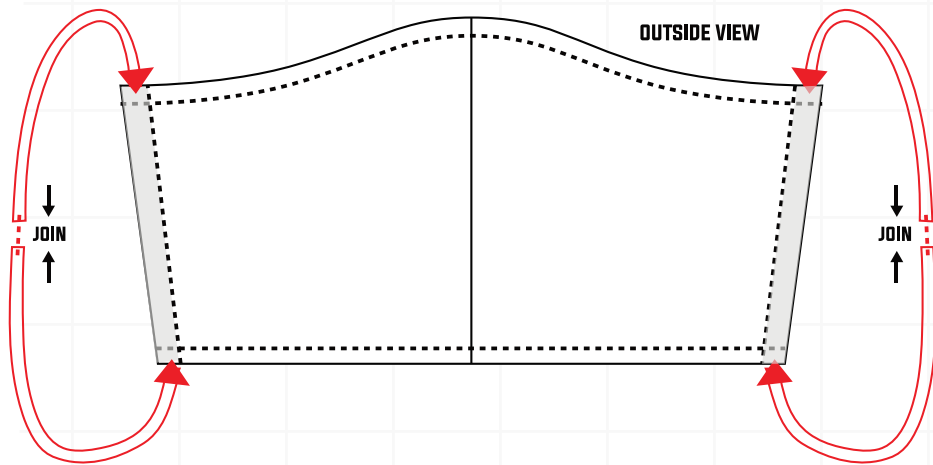
- **STEP 7:** FOLD IN THE SIDES (ELASTIC POCKET) BASTE/ AND TOPSTITCH

A B C



VALERIO MODA MASK PRO.2/ PATTERN

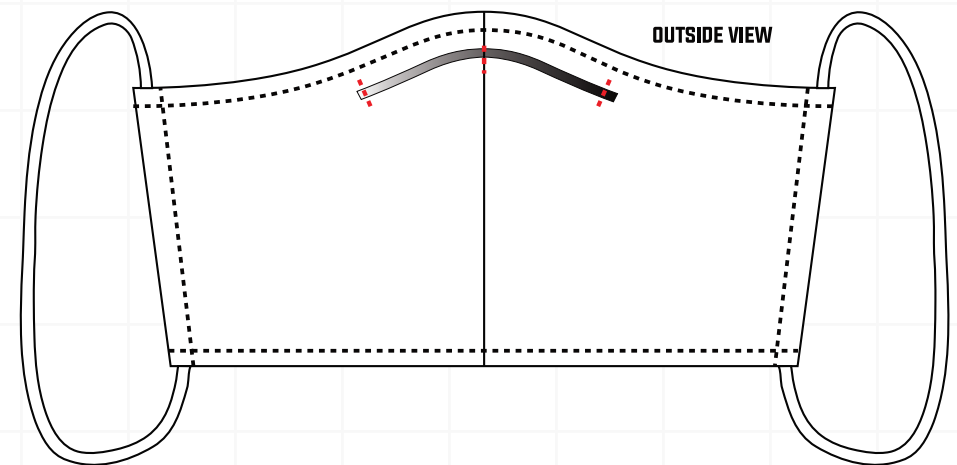
8.



- **STEP 8:** PLACE THE ELASTIC INTO THE SIDES (ELASTIC POCKET) JOIN THEN TOGETHER WITH HAND STITCH OR PIECE OF LEATHER.



9.



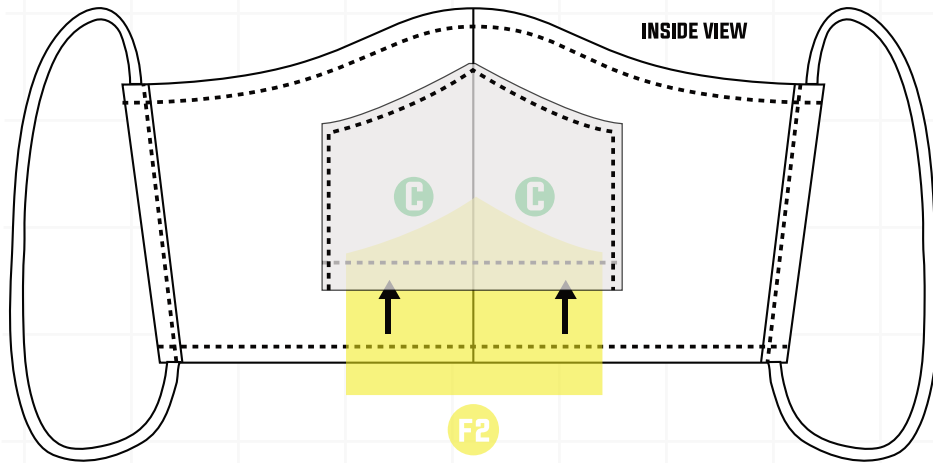
- **STEP 9:** OPTIONAL: TAKE A SURGICAL MASK; TAKE THE TOP PART METAL PIECE AND PLACE TO THE FACE OF THE MASK AND HAND STITCH MIDDLE AND CORNERS



VALERIO MODA MASK PRO.2/ PATTERN



10.

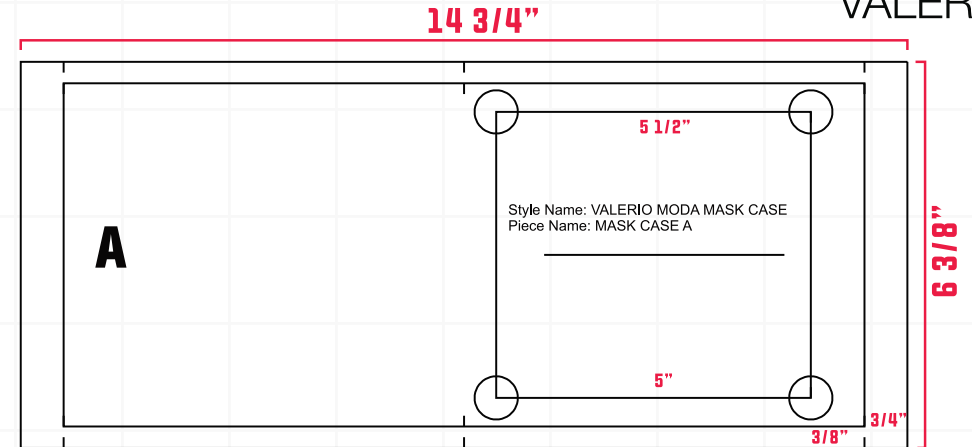


- **STEP 10: OPTIONAL: CUT FILTER, SEW CENTER SEAM AND PLACE IT INSIDE THE FILTER HOLDER**

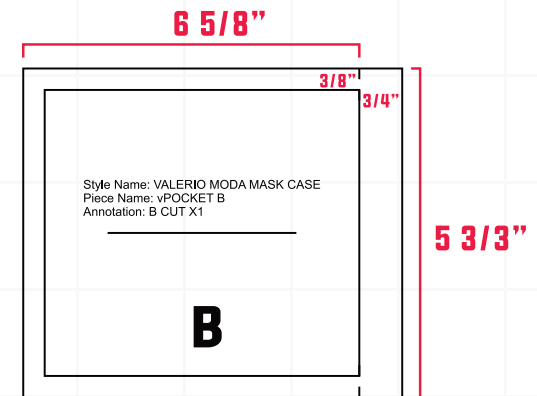
A **B** **C** **E** **F2**



MASK CASE



NOT TO SCALE



NOT TO SCALE

- A. CUT MAIN PIECE X1 FOLD TOP AND BOTTOM/ TOPSTICH
- B. CUT POCKET PIECE X1 // FOLD IN TOP PART/ PRESS/ TOPSTITCH
- PLACE B ON A/ BASTE/ TOP STITCH SIDES AND BOTTOM // SEW THE SIDES A FROM INSIDE
- TURN IT BACK/ PRESS //INSERT STRING IN TOP PART AND TIE IT,



VALERIO MODA MASK PRO.2/ PATTERN



FILTER INFORMATION

THE FILTER IS AN IMPORTANT COMPONENT OF THIS DESIGN

INSTRUCTIONS

STITCH CENTER LINE AND PRESS ALLOWANCE

WASHABLE + IRONABLE

PLACE IT INTO FILTER HOLDER: SEE DIAGRAM

YOU CAN ALSO PUT AN EXTRA FILTER IN FROM THE SIDE POCKET

THIS FILTER ALTERNATIVE CAN BE USED THE SAME WAY IN PRO.1

MATERIAL YOU CAN USE FOR SMALL FILTER

MICROPARTICLE AND AIRBORNE

ALLERGEN REDCUTION MATERIAL

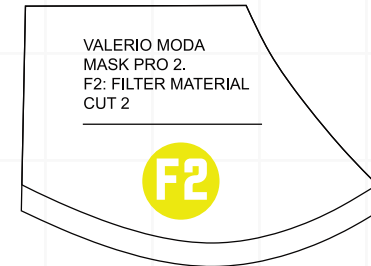
HAMMOCK FILTER

MATERIAL YOU CAN USE FOR LARGE FILTER

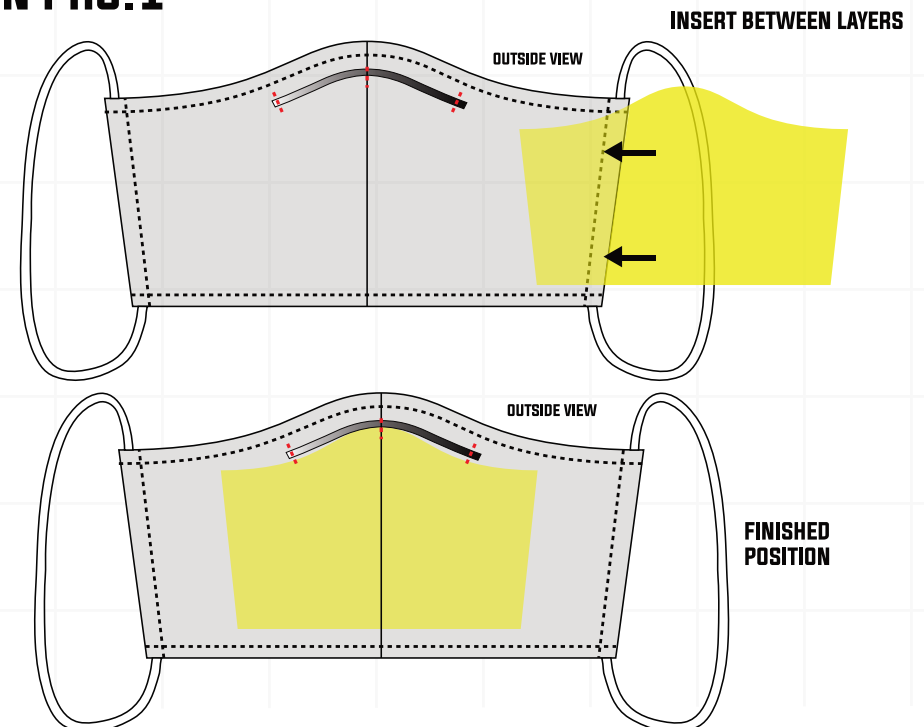
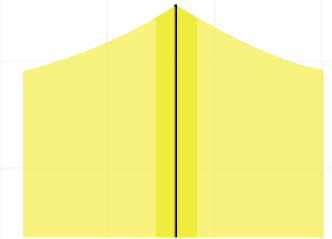
1.ELECTROSTATIC HAMMOCK FILTER PAD

2.DISPOABLE SURGICAL MASK

3.SANITARY PAD (REMOVE ALL PLASTIC PARTS)



OPEN VIEW, STITCHED AND PRESSED



VALERIO MODA MASK PRO.2/ PATTERN



CREATIVE DIRECTOR: ALI MOKHTARIAN

ASSISTANT DESIGNER: HIRAD MOKHTARIAN

PHOTOGRAPHER BY: JONATHAN CRUZ

**DIGITAL ILLUSTRATION- PATTERN PROGRAMING
BY: KYLE WAINMAN**

DIGITAL PATTERN: DARJA ZLINDRA

TECHNICAL COLLABORATORS:

DR. FABIO DE LUCA

DR. SIAVASH ATRCHIAN

KANAVERO REAL STATE GROUP



**WE ARE ALL IN
THIS TOGETHER.**

**SENDING YOU
ALL PRAYERS,**

BE SAFE

BE CREATIVE

BE HELPFUL

**GOD BLESS
ALI MOKHTARIAN**