

203-17

SANDS SCOTTSDALE FIVE

309536

A SUBDIVISION OF PART OF THE W. 1/2 S.E. 1/4 OF SECTION I, T.2N., R.4E., G. & S.R.B. & M., MARICOPA COUNTY, ARIZONA

203-17

SEP 1 - 1978-2

STATE OF ARIZONA)
 County of Maricopa) ss
 I hereby certify that the with-
 instrument was filed and re-
 corded at request of
Coe & Van Loo
 in Book 203
 on page 99
 Witness my hand and official
 Seal the day and year aforesaid.
Bill Henry
 County Recorder
 Deputy Recorder

DEDICATION

STATE OF ARIZONA)
 COUNTY OF MARICOPA) ss

KNOW ALL MEN BY THESE PRESENTS:
 THAT TRANSAMERICA TITLE INSURANCE COMPANY, A CALIFORNIA CORPORATION,
 AS TRUSTEE, HAS SUBDIVIDED UNDER THE NAME OF "SANDS SCOTTSDALE FIVE", PART
 OF THE W 1/2, S.E. 1/4 OF SECTION 1, T.2N., R.4E., G. & S.R.B. & M.,
 MARICOPA COUNTY, ARIZONA, AS SHOWN PLATTED HERON AND HEREBY PUBLISHES
 THIS PLAT AS AND FOR THE PLAT OF SAID "SANDS SCOTTSDALE FIVE" AND HEREBY
 DECLARES THAT SAID PLAT SETS FORTH THE LOCATION AND GIVES THE DIMENSIONS
 OF THE LOTS, STREETS, & TRACT CONSTITUTING SAME AND THAT EACH LOT, STREET
 AND TRACT SHALL BE KNOWN BY THE NUMBER, NAME OR LETTER GIVEN EACH
 RESPECTIVELY ON SAID PLAT AND THAT TRANSAMERICA TITLE INSURANCE COMPANY, AS
 TRUSTEE, HEREBY DEDICATES TO THE PUBLIC FOR USE AS SUCH THE STREETS AND TRACT
 "A" SHOWN ON SAID PLAT AND INCLUDED IN THE ABOVE DESCRIBED PREMISES.
 THERE IS HEREBY DEDICATED THAT PORTION OF THE PREMISES IDENTIFIED AS
 TRACT "A" TO THE USES AS SHOWN IN THE DECLARATION OF COVENANTS, CONDITIONS
 AND RESTRICTIONS FOR "SANDS SCOTTSDALE FIVE" TO BE HEREAFTER RECORDED.
 TRACT "A" IS DEDICATED AS A PUBLIC UTILITIES, PEDESTRIAN AND BICYCLE PATH
 EASEMENT.

EASEMENTS ARE DEDICATED FOR THE PURPOSES SHOWN.
 IN WITNESS WHEREOF:
 TRANSAMERICA TITLE INSURANCE COMPANY, A CALIFORNIA CORPORATION, AS
 TRUSTEE, HAS HEREBY CAUSED ITS CORPORATE SEAL TO BE AFFIXED AND SAME
 TO BE ATTESTED BY THE SIGNATURE OF THE UNDERSIGNED OFFICER THEREUNTO DULY
 AUTHORIZED THIS 4th DAY OF AUGUST, 1978.
 TRANSAMERICA TITLE INSURANCE COMPANY
 AS TRUSTEE
 BY *Neal Simman*
 ASSISTANT SECRETARY

ACKNOWLEDGEMENT

STATE OF ARIZONA)
 COUNTY OF MARICOPA) ss

ON THIS THE 4th DAY OF AUGUST, 1978, BEFORE ME THE
 UNDERSIGNED OFFICER APPEARED WHEEL SIMMONS WHO ACKNOW-
 LEDGED THAT HE/SHE AS AN ASSISTANT SECRETARY, BEING DULY AUTHORIZED SO
 TO DO, EXECUTED THE FOREGOING INSTRUMENT FOR THE PURPOSES CONTAINED BY
 SIGNING THE NAME OF THE CORPORATION, AS TRUSTEE, BY HIMSELF/HERSELF AS
 ASSISTANT SECRETARY.
 IN WITNESS WHEREOF:
 I HEREBY SET MY HAND AND OFFICIAL SEAL.
 BY *Paul J. Moran* 8/20/78
 NOTARY PUBLIC MY COMMISSION EXPIRES

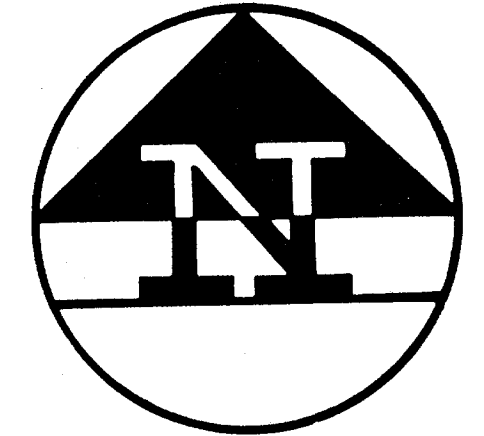
CERTIFICATION

I, John C. Williams, HEREBY CERTIFY THAT I AM A REGISTERED
 LAND SURVEYOR OF THE STATE OF ARIZONA; THAT THIS MAP, CONSISTING OF ONE SHEET,
 CORRECTLY REPRESENTS A SURVEY MADE UNDER MY SUPERVISION DURING THE MONTH
 OF MARCH 1978; THAT THE SURVEY IS TRUE AND COMPLETE AS SHOWN; THAT ALL THE
 MONUMENTS SHOWN ACTUALLY EXIST OR WILL BE SET AS SHOWN; THAT THEIR POSITIONS
 ARE CORRECTLY SHOWN AND THAT SAID MONUMENTS ARE SUFFICIENT TO ENABLE THE SURVEY
 TO BE RETRACED.
 DATED 8-2-78, 1978
John C. Williams
 REGISTERED LAND SURVEYOR

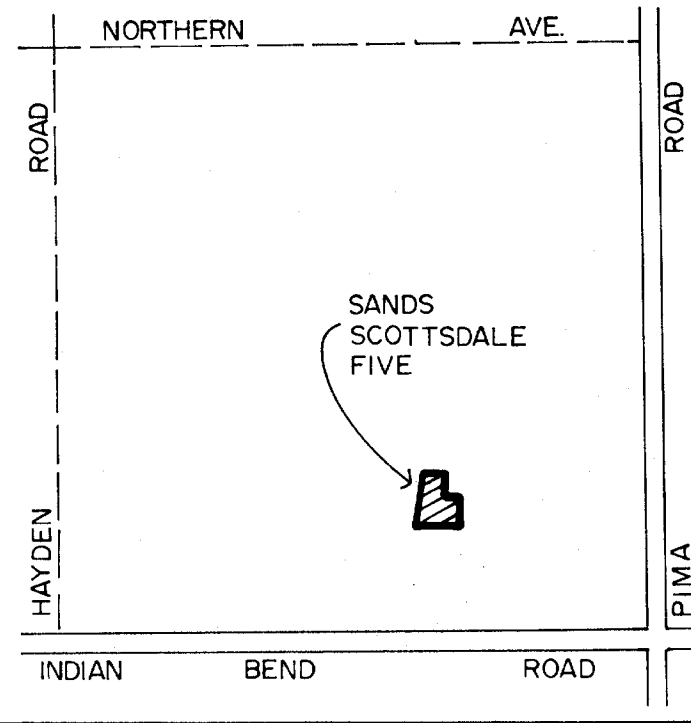
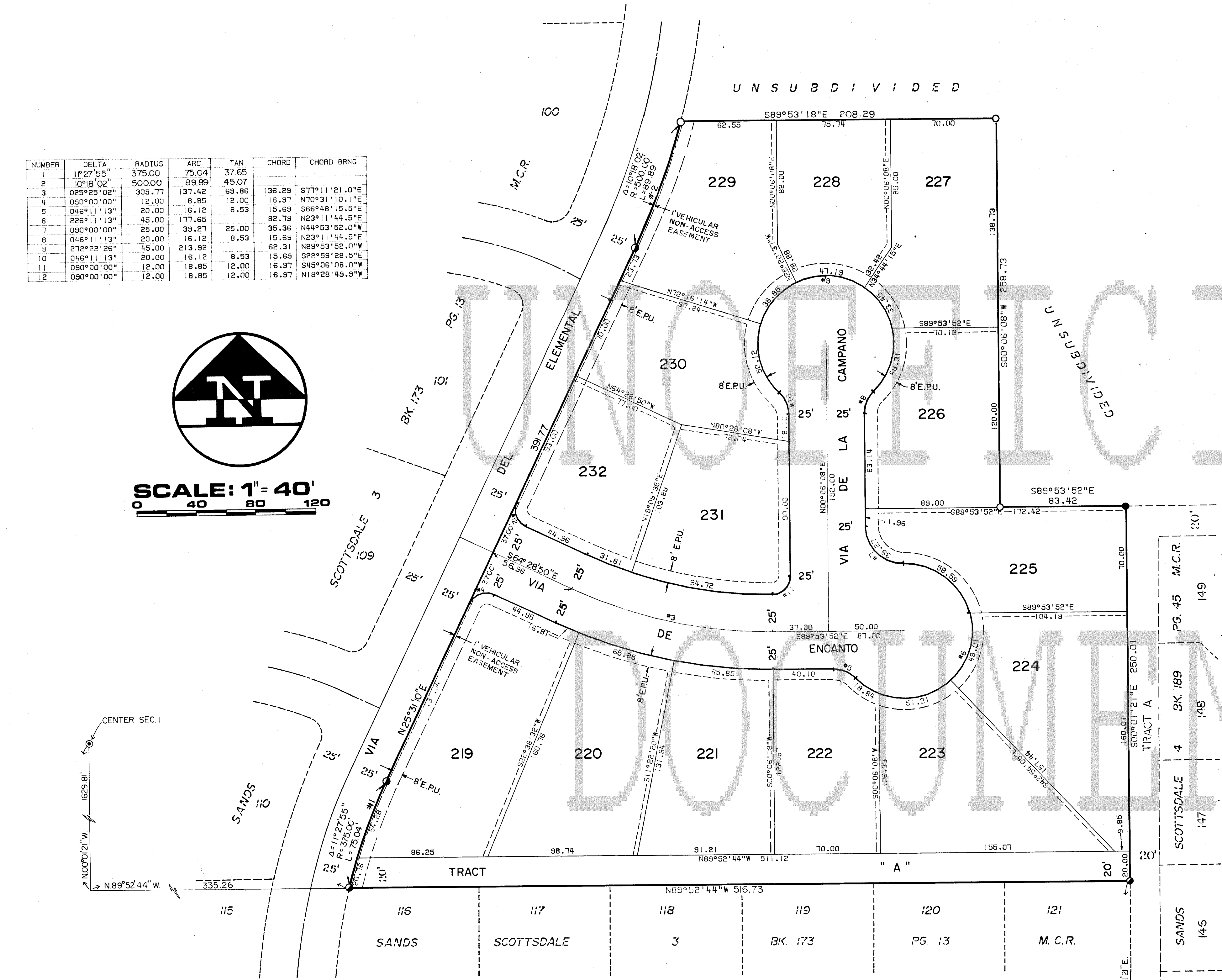
APPROVALS

APPROVED BY THE COUNCIL OF THE CITY OF SCOTTSDALE, ARIZONA, THIS 2
 DAY OF August, 1978.
 BY *Jeff Schwartz* ATTEST *Janet*
 MAYOR CITY CLERK
 I HEREBY CERTIFY THAT THIS PLAT SUBSTANTIALLY CONFORMS TO THE APPROVED
 PRELIMINARY PLAT.
 BY *Walter D. Sells* 8/25/78
 (ACTING) PLANNING DIRECTOR DATE
 I HEREBY CERTIFY THAT ALL ENGINEERING CONDITIONS AND REQUIREMENTS OF THE
 ORDINANCE HAVE BEEN MET.
 BY *George J. Jemelle* 8/25/78
 ENGINEERING SERVICES DIRECTOR DATE

NUMBER	DELTA	RADIUS	ARC	TAN	CHORD	CHORD BRNG
1	17°27'55"	375.00	75.04	37.65		
2	10°16'02"	500.00	99.99	45.07		
3	02°23'02"	309.77	171.42	89.86	136.29	S77°11'21.0"E
4	09°00'00"	12.00	18.85	2.00	16.97	N70°31'10.1"E
5	04°51'13"	20.00	16.12	8.53	15.69	S66°48'15.5"E
6	22°51'13"	45.00	177.65	82.79	82.79	N23°11'44.5"E
7	09°00'00"	25.00	39.27	25.00	35.36	N44°53'52.0"W
8	04°51'13"	20.00	16.12	8.53	15.69	N23°11'44.5"E
9	27°22'26"	45.00	213.92	62.31	89°53'52.0"W	
10	04°51'13"	20.00	16.12	8.53	15.69	S22°59'28.5"E
11	09°00'00"	12.00	18.85	2.00	16.97	S45°06'08.0"W
12	09°00'00"	12.00	18.85	2.00	16.97	N19°28'49.5"W



SCALE: 1" = 40'
 0 40 80 120



- INDICATES CORNER OF SUBDIVISION AND CORNER OF "SANDS SCOTTSDALE FOUR" FND 1/2" REBAR.
- INDICATES CORNER OF THIS SUBDIVISION AND CORNER OF "SANDS SCOTTSDALE THREE", FND 1/2" REBAR.
- INDICATES CORNER OF THIS SUBDIVISION, SET 1/2" REBAR

SIDE LOT LINE EASEMENTS SHOWN ARE 3' WIDE UNLESS OTHERWISE INDICATED & ARE EASEMENTS TO MOUNTAIN BELL, ARIZONA PUBLIC SERVICE & SALT RIVER PROJECT FOR TELEPHONE, GAS & ELECTRIC FACILITIES.

P.U.E. INDICATES PUBLIC UTILITIES EASEMENT.
 ALL UTILITIES ARE TO BE INSTALLED UNDERGROUND.
 ELECTRIC LINES TO BE INSTALLED PER ARIZONA CORPORATION COMMISSION GENERAL ORDER U-48.

GROSS AREA 3.902 AC. COE & VAN LOO CONSULTING ENGINEERS INC. PHOENIX ARIZONA

113-46-05 203-17

203-17