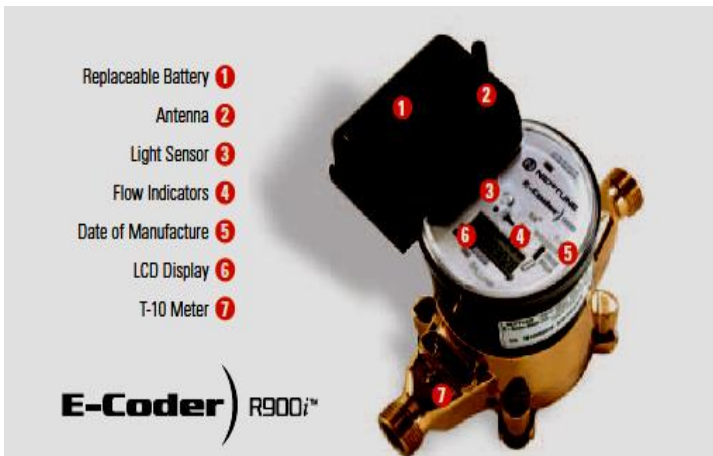


Henderson County Water District  
 655 Main Street / P.O. Box 655  
 Henderson, KY 42419  
 (270) 826-9802

Dear Customer,

As part of Henderson County Water District's ongoing efforts to provide you with the best quality water at the best possible cost, your old water meter has been changed out with a digital one, commonly referred to as a radio read meter. Below is a picture of the meter, as well as explanation of the icons that may show up on the meter face. If you want to read your own meter, you will have to shine a light on the meter (daylight may work, but a flash light works best shined on the light sensor, #3). If you suspect that you have a leak, you will need to wait for the icons to rotate and the rate will show how much water is being used per minute and/or the leak indicator will show water used in a 24-hour period as explained below. Even after turning off the water to the meter, this icon will continue to flash for up to 24 hours as part of the 24-hour cycle.

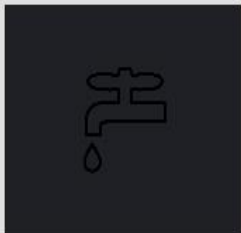
If you have any questions about the meter, you can contact the Henderson County Water District at the contact information at the top of this sheet.



**LIGHT SENSOR**  
 Recessed under the small hole near the center of the faceplate of the E-Coder(R)900i, supplies the power for the LCD panel (light activated).



**FLOW INDICATOR**  
 Shows the direction of flow through the meter:  
**ON** Water in use.  
**OFF** Water not in use.  
**FLASHING** Water is running slowly.  
**(-)** Reverse flow.  
**(+)** Forward flow.



**LEAK INDICATOR**  
 Displays a possible leak:  
**OFF** No leak indicated.  
**FLASHING** Intermittent leak indicates that water has been used for at least 50 of the 96 15-minute intervals during a 24-hour period.  
**ON CONTINUOUSLY** Indicates water use for all 96 15-minute intervals during a 24-hour period.



**RATE OF FLOW**  
 Average flow rate is displayed every six seconds on LCD display.



**FLOW INDICATOR**  
 Shows the direction of flow through the meter:  
**ON** Water in use.  
**OFF** Water not in use.  
**FLASHING** Water is running slowly.  
**(-)** Reverse flow.  
**(+)** Forward flow.



**LEAK INDICATOR**  
 Displays a possible leak:  
**OFF** No leak indicated.  
**FLASHING** Intermittent leak indicates that water has been used for at least 50 of the 96 15-minute intervals during a 24-hour period.  
**On Continuously** Indicates water use for all 96 15-minute intervals during a 24-hour period.



**RATE OF FLOW**  
 Average flow rate is displayed every twelve seconds on LCD display.