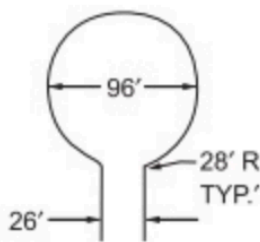




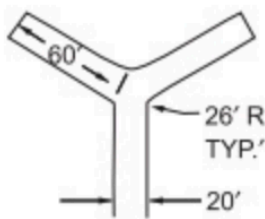
From the Office of Deputy Chief Victor Islas

FIRE DISTRICT TURNAROUNDS

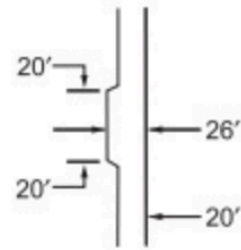
Fire apparatus access roads shall have an unobstructed width of not less than 20 feet exclusive of shoulders with an unobstructed vertical clearance of not less than 13 feet 6 inches. The drivable surface shall be capable of supporting the imposed load of fire apparatus weighing at least 75,000 pounds. Access roads over 150ft from the public roadway will require turnaround.



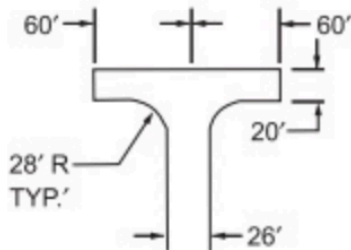
96' DIAMETER
CUL-DE-SAC



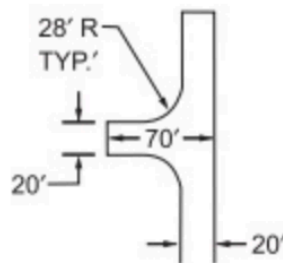
60-FOOT "Y"



MINIMUM CLEARANCE
AROUND A FIRE
HYDRANT



120' HAMMERHEAD



ACCEPTABLE ALTERNATIVE
TO 120' HAMMERHEAD