

MARVELL ACADEMY COVID-19 2020-2021 RE-ENTRY SCHOOL PLAN FOR STUDENT/PARENT

(The following plan will be continually reviewed and revised as we learn new information.)

As we are all experiencing unprecedented stages of the current global health crisis, Marvell Academy has developed a multi-faceted plan to prepare for scenarios we may be faced with during this next school year. The health and safety of our students, faculty, staff, and families is the priority which will dictate our plan as we prepare for the upcoming start of school in August. Built on a foundation of honor and trust, founded in hope with a vision of greatness, we will rely on our experience as an educational institution to deliver the quality education and high standards of instruction that have withstood the good times and the bad times.

Our mission will continue to be “to create a nurturing environment that encourages spiritual growth and fosters knowledgeable, empathetic, strategic, self-directed, and physically fit individuals who can function successfully in society.” Even though we have already and will continue to be challenged through this pandemic, we remain committed to do everything we can to fulfill this mission for the welfare of our students.

LEVELS OF OPERATION:

(The plan we operate under will be determined by the level of transmission or impact of COVID-19.)

SOAR LEVEL

This is an unrestricted on-campus learning environment (as we knew before COVID-19)

We will NOT begin on this level plan, but hope to achieve it at some point during the school year.

EAGLE LEVEL

Campus is open with limited restrictions; On-campus Learning for K3-12th grades

MARVELL LEVEL

Campus is open with heightened restrictions

Modified On-Campus Learning (K3-5th)

Modified On-Campus Learning and Hybrid Learning (6th – 12th)

WHITE LEVEL

Campus is open to essential personnel only (includes childcare K3-5th)

Distance Learning (6th – 12th) and Modified/Hybrid Learning (K3-5th)

RED LEVEL

Campus is open to essential personnel only; Distance Learning (K3-12th grades)



Marvell Academy is preparing for any potential waves of interruption to on-campus learning due to COVID-19.

In the event that our physical on-campus learning is disrupted and we have to move to White or Red levels of operation, the shift will happen immediately without disruption to our learning process.

645 HWY 243 NORTH | MARVELL, ARKANSAS 72366
870.829.2931 | www.marvellacademyeagles.com

SOAR PLAN:

This is an unrestricted on-campus learning environment (as we knew before COVID-19)

We will NOT begin on this level plan, but hope to achieve it at some point during the school year.

EAGLE LEVEL: *(Level for restarting on August 6; it could possibly change before then.)*

Campus is open with limited restrictions; On-campus Learning for K3-12th grades

Marvell Academy is preparing for on-campus school to resume this fall. Students will follow specific health precautions as outlined by state and local health requirements. Specific decisions and plans regarding on-campus modifications are still being finalized; however, at this time, the following modifications and protocols will be in effect:

- Students will return to school in a face-to-face learning environment with limited restrictions.
- Modifications will encourage social distancing and group sizing as stated by the CDC and Arkansas Health Department.
- Face coverings over nose and mouth (i.e. masks, neck gaiters, neck scarfs) will be required for faculty, staff, and students in 4th – 12th grades while in buildings except when eating or areas where social distancing can be attained. Social distancing (6 feet apart) will be expected by everyone when outside and face coverings are off.
- New hand-sanitizer stations will be available throughout the campus.
- Hand-washing procedures will be followed and safety signage will be prevalent on campus
- Additional staff will be cleaning, sanitizing, and disinfecting during the day and after school. There will be routine cleaning and disinfecting of surfaces and objects that are frequently touched.
- Building access for visitors and parents will be limited.
- Parents/guardians will partner with teachers to screen and monitor temperatures and symptoms.
- Drop-off, pickup, and bus procedures may be modified some from the past year.
- Teachers will facilitate any extra breaks for students during class periods.
- Outdoor space will be utilized as much as possible.

EAGLE

MARVELL LEVEL:

Campus is open with heightened restrictions; K3-5th On-campus with Modified Learning Hybrid Learning (6th – 12th)

- All K3-5th grade classes will continue to meet daily. This model allows for classroom instruction to continue on campus while compliance with physical distancing protocols may be maintained in different learning environments with extra personnel available.
- 11th-12th students will remain at home and practice distance learning through Rediker and other programs (M-Th); on Fridays, they will be on-campus and meet with their instructors at designated class times.
- A hybrid learning environment will allow for 6th-10th grade students to be on-campus with social-distancing on Monday - Thursday (M-Th). The reduced number of students on campus will allow the remaining students to be socially-distanced in larger areas with the teachers rotating to the students; these students will remain at home on Fridays (F) and continue to learn through distance learning assignments.
- School day beginning and ending times may be adjusted to accomplish this learning model.
- This plan will continue until we are able to return to the Eagle Plan level.

MARVELL

WHITE LEVEL:

Campus is open to essential personnel only (with childcare option for K3-5th).

Distance Learning through the Rediker Learning Management System for K3-12th grades.

- Distance learning through Rediker and other platforms will allow students to continue their coursework from home through both synchronous (live) and asynchronous (accessible anytime) instruction during a time when the campus may have to be closed due to state health directives or local requirements.
- Students will be previously instructed on technology devices, protocols, and expectations for this distance-learning delivery of instruction.
- Arrangements will be made for students with limited or no Internet access.
- There will be childcare for K3-5th grades for those parents who are essential workers and do not have available childcare options, and students will be assisted with their distance lessons on site.

WHITE

RED LEVEL:

Campus is open to essential personnel only; Distance Learning (K3-12th grades)

Students will continue their coursework with both synchronous (live) instruction and asynchronous (accessible anytime) instruction when campus is closed.

- Campus is open to only essential personnel only.
- Distance Learning for K3-12th grade students.
- No childcare available for state-mandated closure or closure due to inclement weather.
- Students with limited or no Internet access should make arrangements with technology coordinator.

RED

COVID-19 CAMPUS CHANGES

While specific decisions and plans are being finalized over the next few weeks as more information and public health guidelines are issued, strategies are being developed in protocols and processes including, but not limited to, the following:

- Capacity limits to allow for social distancing in common spaces:
 - Gym
 - Gym Lobby
 - Kitchen
 - Libraries
- Capacity limits to allow for social distancing during:
 - Break
 - Lunch
 - Pep Rallies
 - Assemblies
- Touchless sink faucets installed
- Hydration bottle filler stations and hand sanitizer stations available in all buildings
- All facilities, both indoors and outdoors, will have signage stating common COVID-19 symptoms as information and reminders for employees, students and parents/guardians.
- Limited campus access for visitors and parents
- Modification of programs and events in compliance with limits on crowd sizes and social distancing measures
- Modified check in/check out and phone procedures
- Student training on how to use all technology that may be needed for periods of time when they may not be on-campus for learning
- Use of more outdoor lessons and discovery learning as much as possible to support content
- Continued use of distance/virtual learning models in classes to make smooth transitions between different levels of operation
- Additional personnel will be added to the daily MA custodial staff
- Training of custodial/maintenance staff on use of all cleaning materials as to safety, use, and best practices for disinfecting
- Training of staff on healthy hygiene practices so they can teach these to students
- Ensure hand-washing strategies (washing with soap and water for at least 20 seconds, especially after going to the bathroom; before eating; and after blowing nose, coughing, or sneezing.) If soap and water are not available and hands are not visibly dirty, students will be asked to use an alcohol-based hand sanitizer that contains at least 60% alcohol
- Routine cleaning and disinfecting surfaces and objects that are frequently touched. This may include cleaning objects/surfaces not ordinarily cleaned daily (e.g., doorknobs, light switches, classroom sink handles, countertops, tabletops).
- Purchasing of adequate cleaning supplies to support cleaning and disinfection practices.
- Intensify cleaning and disinfection efforts

In an effort to keep all of our students, faculty, and staff safe, we ask parents to be diligent in monitoring your child for signs of illness or exposure to COVID-19. While we realize that keeping your child home from school can be an inconvenience, it is necessary for their safety, as well as for the safety and wellness of others. Many of you have told us how important it is to have your child at school, and we want them to be here. It will take all of us doing our part to provide this for our children. We appreciate your support as we continue to provide a high-quality education for our students.

Wear a Cloth Face Covering to Protect You and Your Friends

PUT ON



WASH YOUR HANDS



PLACE OVER NOSE AND MOUTH

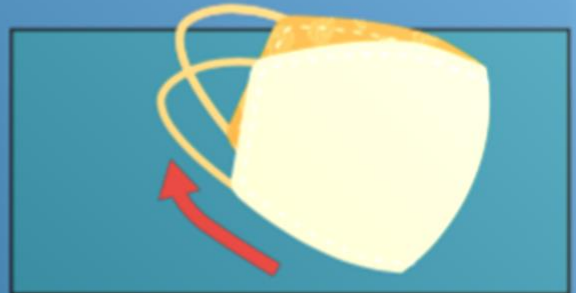


MAKE SURE YOU CAN BREATHE EASILY

TAKE OFF



TAKE OFF YOUR FACE COVERING



FOLD OUTSIDE CORNERS TOGETHER



PUT ASIDE FOR WASHING



WASH YOUR HANDS

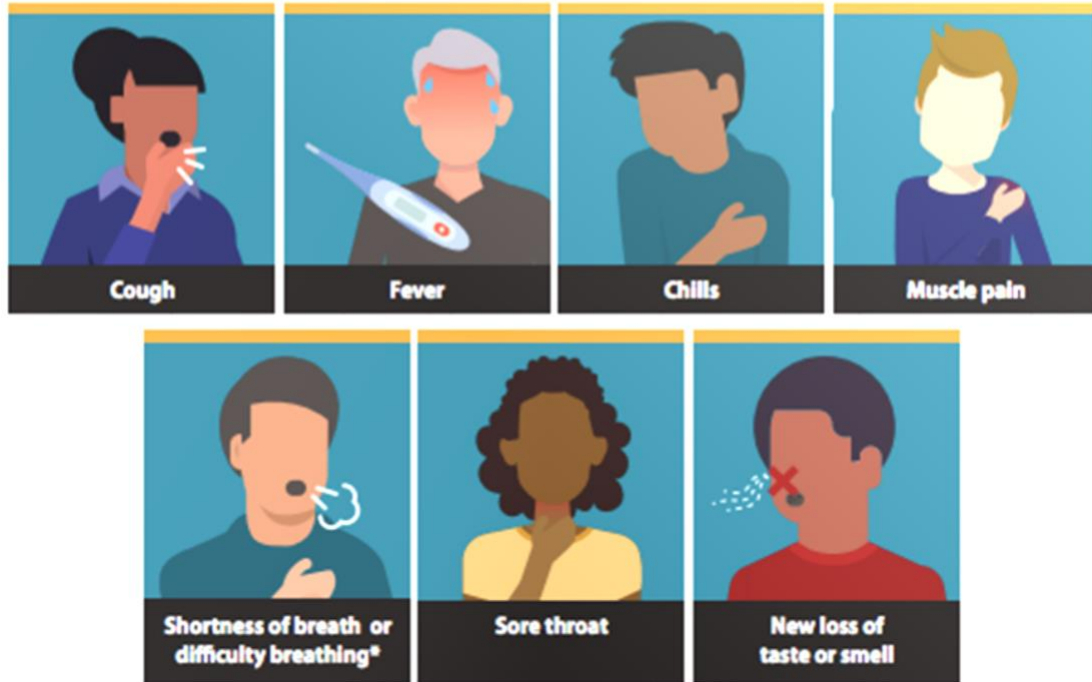
WASH YOUR HANDS OFTEN, WEAR A MASK, AND STAY 6 FEET FROM OTHERS.



cdc.gov/coronavirus

Symptoms of Coronavirus (COVID-19)

Know the symptoms of COVID-19, which can include the following:



Symptoms can range from mild to severe illness, and appear 2-14 days after you are exposed to the virus that causes COVID-19.

***Seek medical care immediately if someone has emergency warning signs of COVID-19.**

- Trouble breathing
- Persistent pain or pressure in the chest
- New confusion
- Inability to wake or stay awake
- Bluish lips or face

This list is not all possible symptoms. Please call your medical provider for any other symptoms that are severe or concerning to you.



cdc.gov/coronavirus

3/17/20 4:48 PM