



Seaham Harbour Marina

Seaham Harbour Marina

Visiting Boats Information 2014-15

Seaham Harbour Marina, Seaham



Marina Office, Unit 10, Waterside
Seaham Harbour Marina
Seaham, County Durham SR7 7EE

email: seahammarina@sky.com
Website: www.seahammarina.com
Telephone: 0191 581 8998



Seaham Harbour Marina

*Seaham Harbour Marina is a joint
venture between the Victoria Group
and Durham County Council*

SEAHAM HARBOUR
EST 1898



Seaham Harbour Marina



Seaham Harbour Marina

LOCATION

- On the east coast, the only marina in County Durham
- 5 miles south of Sunderland and 11 miles north of Hartlepool
- Harbour entrance: 54° 50' 13.00" N / 01° 19' 17.00" W
- Marina entrance: 54° 50' 15.00" N / 01° 19' 36.00" W

HISTORY

- The construction of the harbour at Seaham began in 1828 and completed in 1831
- It was created and owned by Lord Londonderry for the export of coal from the Durham coalfields in which his wife, Lady Frances Anne Vane-Tempest, owned substantial estates in the area including several coal mines
- The harbour was further developed in 1898 with extensions which included the addition of the north and south outer breakwaters
- The north dock was designed as a high tide harbour in which the coal ships entered at high tide, the dock gates were then closed to retain the depths required, then the laden ships departed at high tide
- Due to the constant damage to the dock gates, those were removed in 1952 and the north dock became a small fishing harbour which dried out on low tides. Coal export was then concentrated to the larger and deeper south dock.
- Through the decline of the fishing industry through the 1990s there were only four fishing boats left in the north dock by 2005 which resulted in two options; either allow the north dock to deteriorate until closure was imminent or develop a shallow draft marina that would preserve its existence and serve smaller leisure craft
- The north dock is now the marina

NAVIGATION MARKS

- Harbour entrance black & white circle lighthouse to starboard & 3 triangle red lights to port
- Marina entrance 3 inline red lights or 3 inline green lights to entrance of gateway – do not enter gateway/marina during 3 red lights

HAZARDS

- Give way to commercial shipping, do not anchor moor or drift through shipping lane
- Two historic mooring posts within marina basin marked during dark with yellow flashing light to top (4 seconds, single flash)
- Careful on entry within 50 metres of marina entrance during spring low tides, depths can shallow out to 1 metre

APPROACH

- Marina entrance is 276° west 350 metres from centre of harbour entrance between pier heads
- 5 knots speed limit throughout inner harbour and marina
- 3 green lights to marina entrance indicates safe to navigate gateway, 3 red lights do not approach gateway

DOCK GATE AND SILL

- A single leaf gate operates automatically to retain the depths at each low tide
- 3 red lights indicate gate closed, closing or opening and an audible alarm sounds during the closing or opening phase which takes 15 minutes
- The dock gate is open a minimum of 3 hours either side of high tides

Seaham Harbour Marina



Seaham Harbour Marina

DEPTHS RETAINED WITHIN THE MARINA

- The sill is at Chart Datum height and the gate closes at +2.6m CD to retain the depths within the marina
- The shallowest depth within the marina when the gate is closed is 1 metre and the maximum depth is 1.8 metres at the visitor berths

PONTOONS

- There are a total of 77 pontoon berths, this includes a minimum of 3 visitor berths
- Maximum LOA 10 metres and draft restriction 1.5 metres (standard pontoon berths)
- Pontoon services include electric & water located on the walkways (not each finger), cables & hoses are available in the pontoon storage boxes
- Access to & from the pontoons is via an electronic fob security system

SAFETY AND SECURITY

- The pontoons have the necessary lighting, rescue equipment and safety ladders
- New rescue equipment is located throughout the site
- A high tech CCTV security system with loudspeakers is installed with 24 hour monitoring and recordings kept for 30 days

ON-SITE FACILITIES

- A slipway is located 20 metres from the pontoon access gate
- The on-site “Waterside” building facility which contains 10 individual business units is located within 50 metres of the pontoon access which has toilets & showers
- The “Lookout” cafe and the marina office are both on the upper floor of the Waterside. Nicey icey ice cream shop is located on the ground floor.
- On-site historic lifeboat in recently restored lifeboat house for public viewing and heritage centre
- Free on-site parking or if full then parking at marina entrance available
- Future facilities may include secure hard standing for boat storage and maintenance and a lifting out facility



Seaham Harbour Marina



Seaham Harbour Marina

OFF-SITE FACILITIES

- The "Byron Place" shopping centre is within walking distance, 200 metres, of the marina entrance; stores include Asda, Argos, Home Bargain, Subway, Wilkos etc
- The sea front & Church Street shopping centre is within 100 metres of the marina entrance, offering B&Bs, restaurants, cafes, modern bars etc
- Dalton Park shopping centre is within 3 miles; this large complex of big brand discount outlets include Next, Adidas, M&S, Regatta, Berghaus etc

EXPLORE SEAHAM

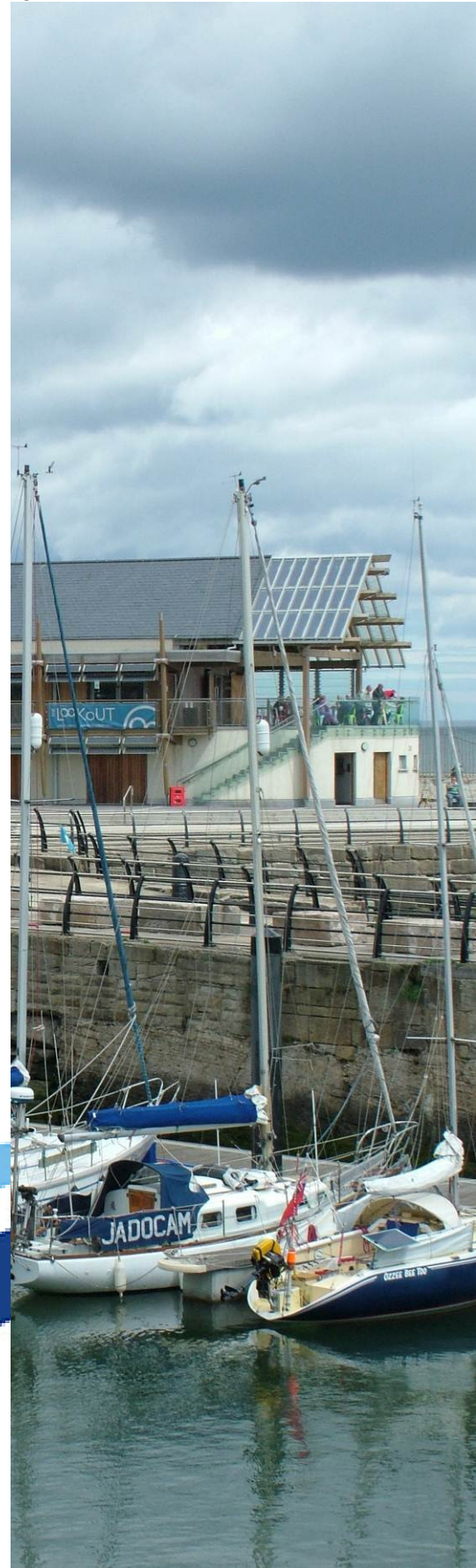
- The marina is at the centre of the award winning Durham Heritage Coast coastal walk
- Seaham Hall hotel is within 1 mile, the place where the famous poet, Lord Byron, married in 1815
- St Mary the Virgin Church is located within 1 mile, this Grade 1 listed Anglo Saxon church is only one of six like it in the country

TARRIFS TO 31ST MARCH 2015

- Annual pontoon berths £192 per metre per year, includes access to electric & water services
- Visitors: boats to 7 metres £12 per day, £72 per week, £192 per month: boats over 7 metres to 10 metres £15 per day, £96 per week, £252 per month
- Slipway £10 per day or £100 per year
- All prices include VAT

CONTACT

- Marina Office, Unit 10, Waterside, Seaham, County Durham SR7 7EE
- Telephone marina office 0191 581 8998 and weekend operations 0785 5778 836
- VHF current contact through channel 16 then will be requested to switch to channel 8. Call sign "Seaham Marina"

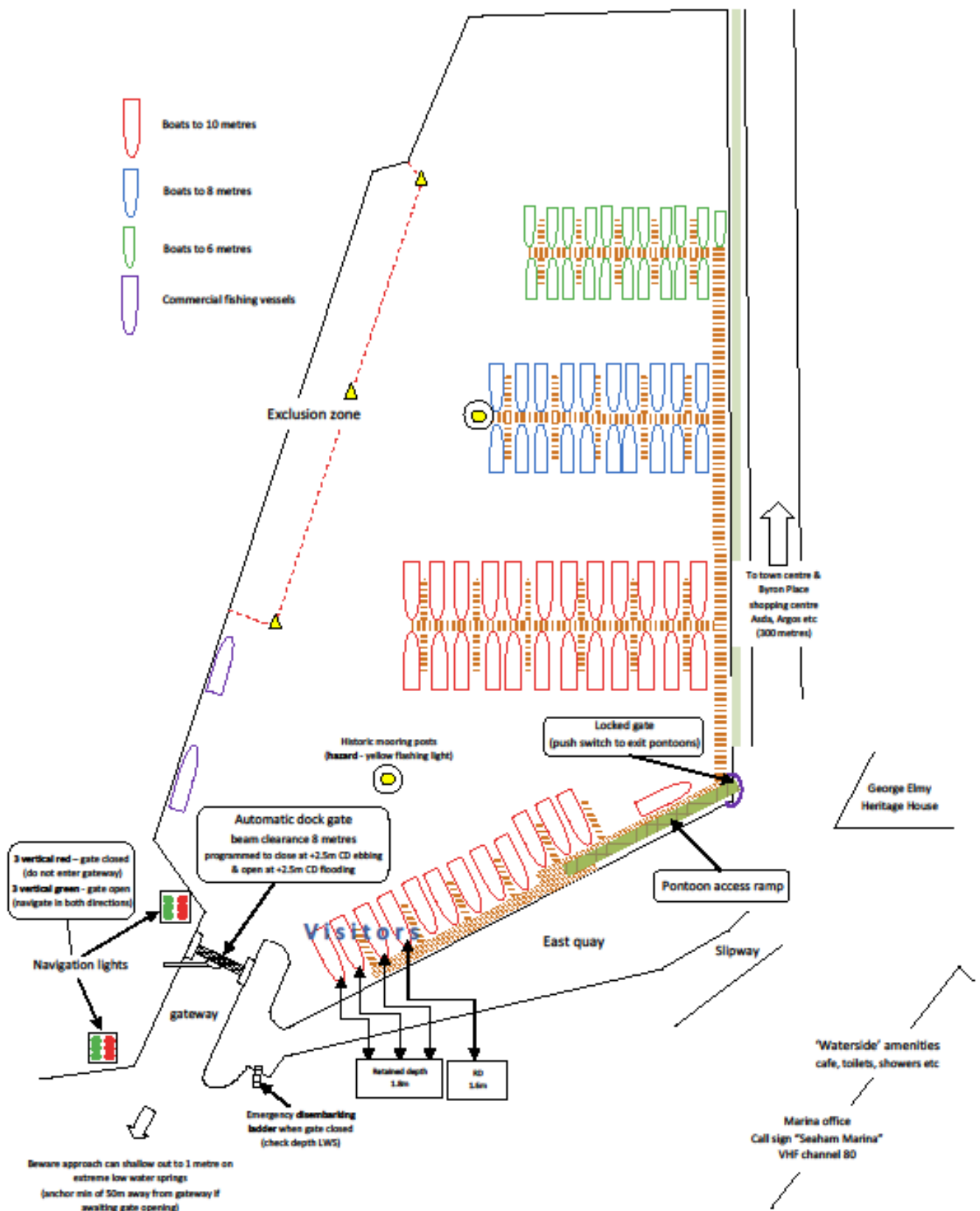


Seaham Harbour Marina



Seaham Harbour Marina

PONTOON LAYOUT



Seaham Harbour Marina



Seaham Harbour Marina

SITE PLAN

