

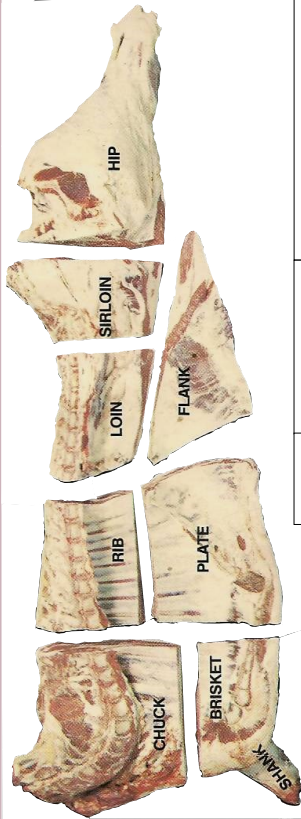
RED DEER LAKE MEAT PROCESSING LTD.

Located a short, pleasant drive
south of Calgary, west of
Spruce Meadows

Serving Southern Alberta since 1974

Specializing in Custom Slaughter
and locally produced Beef,
Lamb, & Pork

Featuring Local Alberta Beef & Lamb



WHOLE SIDE OF BEEF

Cut From 100% Genuine Local Alberta Dry aged Beef.

1 Hind & 1 Front (Avg. 250-300 lbs.)

Cut, Wrapped, Frozen & Boxed \$4.59/lb.; Uncut \$3.99/lb

SPLIT SIDE OF BEEF –(Half Hind and Half Front)

(Approx. Weight before cutting- 150 lbs.)

Cut, Wrapped, Frozen & Boxed \$4.69/lb

FRONT OF BEEF

Rib, Chuck, & Brisket
(Avg. 130-160 lbs.)

**Cut, Wrapped, Frozen & Boxed
\$4.29/lb. Uncut \$3.89/lb**

HIND OF BEEF

Hip, Long Loin, & Flank
(Avg. 110-140 lbs.)

**Cut, Wrapped, Frozen & Boxed
\$4.79/lb. Uncut \$4.09/lb**

Price is based on weight before cutting. Price includes cutting, Brown paper freezer wrap-
ping, boxing, and freezing. Custom Beef slaughter also available. Call for current rates &
slaughter booking. Custom Beef Slaughter is \$130.00/head; cut & wrap cost: 0.89/lb.

UNCUT BEEF PRIMALS

BEEF HIP–Bone in Whole \$4.79/lb.

Top(Inside) Round –Whole Bnls \$7.99/lb.

Bottom(Outside) Round –Whole Bnls \$7.49/lb.

Sirloin Tip –Whole Bnls \$7.99/lb.

Whole Blade (chuck)–Bone in uncut \$5.99/lb.

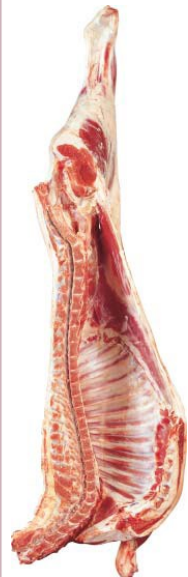
Cross Rib–Bone In Whole uncut \$5.99/lb.

Brisket Plate–Bone In Whole uncut \$4.39/lb.

Top Sirloin Butt –Bnls Whole Uncut \$9.99/lb.

Strip Loin –Bnls Whole Uncut \$15.49/lb.

See reverse
side for more
retail prices



Alberta Lamb

ALBERTA LAMB

**Subject to availability*

Average Carcass Weight : 45-70 lbs;

Cut, Wrapped, Frozen & Boxed

Carcass-\$9.99/lb. Side \$10.49/lb.

CARCASS OF LAMB

Uncut; Market Weight (45-70 lbs)

\$9.49/lb. *Subject to availability

*LAMB CUTS

**Subject to availability*

Whole Leg Bone In-\$17.69/lb. Side Ribs-\$9.99/lb.

Loin Chops-\$28.50/lb. Whole Rack-\$25.50/lb.

Whole Shoulder Roast–Bone In-\$14.49/lb.

Shoulder Chops-\$14.99/lb Whole Shank-\$9.99/lb.

Boneless Stew-\$15.99/lb Ground Lamb-\$12.99/lb.

*CARCASS OF GOAT

Average Weight : 25-40 lbs;

Cut, Wrapped, Frozen & Boxed

\$12.99/lb.

**Subject to availability*

*SIDE OF GOAT

Avg. Weight : 13-20 lbs.

Cut, Wrapped, Frozen & Boxed

\$13.49/lb.

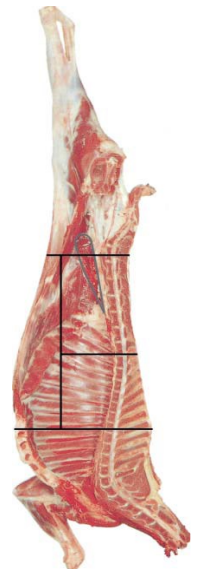
**Subject to availability*

*CARCASS OF LAMB

**Uncut; Head On Spring Lamb;
Under 30 lbs**

\$14.50/lb.

**Subject to availability*



Alberta Goat



Main Plant Address

90093 226 Ave West
Foothills, AB. T1S 2Z2

Ph.-403-256-4925

Fax: 403-256-8882

Email: info@rdlmeats.ab.ca

Website www.rdlmeats.ab.ca



*Please Call 403-256-4925 to place an order.

*Prices in effect until: **April 30/2023**

Prices are subject to change. Please Call to verify.

All our Products are from Guaranteed Natural Local
Alberta Government Inspected Livestock