

Turbo air
AIR CONDITIONER MANUFACTURER

4184 E. Conant St.
Long Beach, CA 90808
Tel. 888-900-1002
Fax. 310-900-1088
www.turboairinc.net

Project :

Model # :

Item # :

Qty :

Approval :

Unit Cooler

Model : ADR393AE



≡ FEATURES / BENEFITS ≡

- Blue anti-corrosion-fin increases the life span of the coil.
- Air-pass guard is located at the bottom of the coil to improve heat exchange rate.
- Easy to replace defrost heater. (LED model)
- Corrugated fin is used to increase heat exchanges rate by expanding the surface area.
- Even in confined space, all parts can be reached easily by opening the front cover.
- Location of power connector makes replacement of motor convenient.
- Seamless inner groove copper tube increases the heat exchange rate by reducing the space between the fin and copper tube.
- Venturi type distributor and precise orifice hole are used to minimize the pressure drop and maximize the freezing capacity respectively.
- Even in confined space, all parts can be reached easily by opening the front cover.
- Thermostat is installed to prevent over temperature on heater.
- Circuit opens automatically over 50°F.
- Parts available :
 - Expansion Valve (Sporlan) (Pre Mounted)
 - Solenoid Valve (Sporlan)
 - Thermostat (Johnson Control)
- The spiral fan guard enables cold air to be delivered efficiently and thoroughly.
- The protruding fan and motor placement substantially reduce vibration and noise.
- PSC fan motor, which prevents oil evaporation, is used for long life expectancy.
- EC Motor (optional) for high energy efficiency.
- Unique air flow system (patent pending) results in improved circulation within crowded walk-in cooler/freezer.
- Anti-oxidizing stainless steel mounting and bolts.

Unit Cooler

Model : ADR393AE

ADR AIR DEFROST MODELS 60HZ. WITH EC MOTORS.

ADR Model	Capacity BTUH 10°F TD 25°F SST	Fan Data		EC Motor Data 120V 1Ph 60Hz		
		CFM/m³H	No.	HP	Total Amps	Watts
ADR393AE	39300	3900	6	1/15	6.00	300

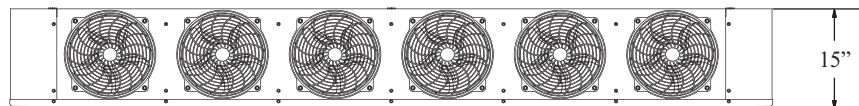
ADR Model	Connections (Inches)				Approx. Net Wt. Lbs
	Coil Inlet	Suction	External Equalizer	Drain	
ADR393AE	1/2 OD	1-3/8 ID	1/4 OD	3/4 MPT	127

Design and specifications subject to change without notice

■ **WARRANTY : 1 Year Fan Motor and Parts Warranty**

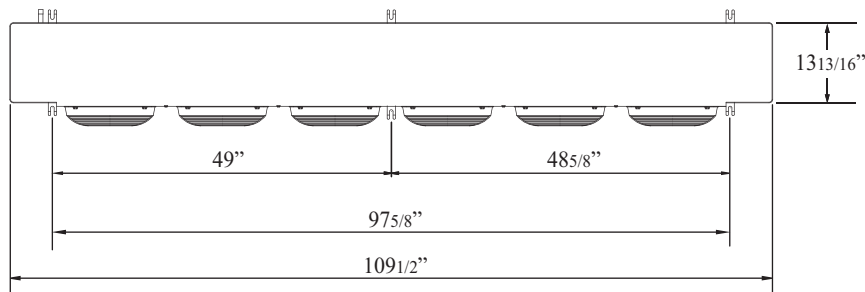
PLAN VIEW

(unit : inch)

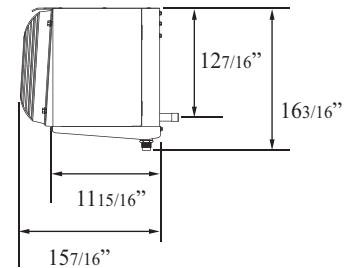


3/4" MPT (14NPS)
Drain Connection

FRONT VIEW



TOP VIEW



SIDE VIEW



■ Toll Free : 888-900-1002

REFRIGERATOR MANUFACTURER
Turbo air

GERMAN KNIFE

RADIANCE

GREEN WORLD

AIR CONDITIONER MANUFACTURER
Turbo air