

AUCTION

**HORSE EQUIPMENT, RANCH SUPPLIES,
HOUSEHOLD ITEMS, VINTAGE-ANTIQUE**

Auction to be held on the John Blomster Farm, 36937 128th St. Wetonka, SD

Directions: From Aberdeen, SD West on Hwy 12 to Wetonka Road, approximate 13 miles (Web Tanks & Glacial Terminal), go North 6 miles on 370th Avenue, 3/4 West on 128th Street. (Check your mileage, Do NOT rely on GPS, for some reason the GPS might direct you wrong and send you to Westport.)

SATURDAY, SEPT. 17 – 10:30 a.m.

CUSTOM WESTERN DÉCOR/TOYS/BOOTS

Cowhide covered storage box
Cowhide covered sofa table
Breyer horses & stables
15 pairs new & used boots (all sizes & styles)



SHOP-TOOLS-RANCH SUPPLIES

Steel 4'x4' Bolt Box
4' x 8' Metal Locking Cabinet
Bench Grinder Vise
Angle Grinder (Heavy Duty)
36" Steel Tool Box (Heavy Duty)
Propane Tank (100# w/ Hose & Torch)
Trailer Balls, Receiver Hitches, Light & Brake
Hydraulic & Handyman Jacks
Gate Hardware, PTO Shaft
Jack With Wheel (New)
Saw Horses (Wood)
Hand Truck Bolts, Nails
Lots of Misc. Shop Supplies
Several Steel & Plastic Barrels
4' Rubbermaid Sheep Water Tank
12 ft. Long Metal Sheep Feeder
6 ft. Step Ladder (Wood)
4-Live Animal Traps
5 ft. Costco Painting Ladder
3- Cable Hand Winches
Rakes, Shovels, Brooms
Metal Measuring Wheel – 1 rod
2 Cycle Oil, Gas Cans, Log Jack
16" Stihl Chainsaw Blades (Several)
Manual Log Splitter (Post Pounder Style)
4 Wheel Garden Cart
2 - Ratchet Chain Binder (NEW)
2 - Lever Chain Binders (Used)
Cement Lawn Ornaments
(Jockey, Pony, Turtle)
Plastic Barrel Feed/ Water Tubs
Mastercraft Door & Frame (NEW)
Folding Metal Security Gate (NEW)
Several Wheeled Shop Stools
2-Folding Security Gates (Used)
Security Walk-Thru Gate (4x6 ft.)
2-Buddy Propane Heaters
Electric Heater (1500w w/Thermostat)
2 - Paint Sprayers (Electric, Commercial size)

Ladies Power Climber Bike (Cross Country)
2-Welding Tables (Heavy Duty)
Garage Cabinet (4'x8' Rubbermaid)
2009 Dodge Ram Tailgate
Dodge Ram Wheel Caps (set of 4)

VINTAGE - ANTIQUE

Vintage Spring Steel Lawn Chairs and Lounge Chair (3 Piece Set)
1940's Baby Stroller (Good Shape)
Parlor Wood Stove (Antique, Round)
Wood Stove (Enamel, Square)
Multiple Old Trunks, Foot Lockers
Solid Brass Bed (Head, Foot, Rails)
Tractor Seats (Cast Iron & Steel)
1960's & 1980's (Stallion Edition)
Quarter Horse Journals
1940's – 1960's Western Horseman
Dozen's of Equine & Western Books
Head & Foot Bed Rails (Cast Iron - Fancy)
Vintage Orchard Fruit Pyrex (Brown, Cinderella Handles) Casserole Bowls
Pyrex Mixing Bowls (Cinderella Handles)
Pyrex Pie Pan (Green Milk Glass)
Pyrex Casserole (Green Milk Glass)
Corning Ware (1 Pint 'Le Sauge')
Corning Ware (Spice of Life)
Sauce Pan w/Lid
Fire King Anchor Hoeking (Gold Trim) Full Set
1980 Sewing Machine (Vintage) in Wood Cabinet.
Antique Wood Drill box (12 ft.)
Margarita Glasses (cactus Stems)
Wheat Pattern Glasses
Vintage Presto Pressure Cooker
Vintage Gray Enamel Plates & Cups
Vintage Enamel Coffee Pot & Cups
Vintage Brown Enamel 3 Pc. Set of Sauce Pans

Vintage Red & Gray Enamel Plates
Old School Desk
2-Vintage Tables (Chrome Legs)
Antique Small Wood Rocker
Several Vintage Cabinet Doors

MINI LONGHORN HEIFER

2021 Mini Longhorn Heifer – 34" at shoulder, halter broke, ties, bangs vaccinated, current health certificate,* Gentle, * Loves Cookies*



HOUSEHOLD

Wood Shelf Units Plastic Shelf units
Folding Wood Shelves
2-Metal Mail Boxes (New)
2-Metal Mail Boxes (Used on Heavy Stands)
Table Tops (Enamel, no legs)
2-Wood Bar Chairs (Swivel)
Wood Bar Doors (Swinging)
Stacked Washer & Dryer

STEEL SIDING - LUMBER

5- 38" x 20ft' White (New)
5- 38" x 18ft' White (New)
2- 38" x 14ft' White (New)
2- 38" x 12ft' White (New)
Approx.35 sheets Used 38"x8ft. Tan
8- 6"x8 ft. Wood Posts (Treated Pointed)
New & Used Lumber (2x4's & 2x6's x 8 ft. to 12 ft)
Sheets of Old & New (OSB & Plywood)
2 Plastic Lattice 4 x 6 Panels
4'x6' Plexiglass
Misc. 4x4 & 4x6 X8ft.

PLUMBING - FENCING - HORSE FENCING - STALL FRONTS

Heat Tape, Float Valve
Thermostat Controlled Outlet
1/4 HP Submersible Pump (New)
1/2 HP Porta Pump (New)
50 ft. Garden Hose (New)
2 - Metal Hose Hanger
Wayne Utility mini Pump (New)

Welded 5 ft. Garden Fence
2'x 25' Yard Guard Fence (New)

3 - 4 ft. Garden Gates
Approx 25 5 ft "T" Posts
Bundle w/6 ft. "T" Posts
Large Roll #9 Wire 2-5 ft. x 75 ft. (New Rolls)
2 - 5 ft. x 75 ft. (Used Good Condition)
8 - 13 ft. x 8 ft. tall (w/sliding doors)
1 - 16 ft. x 8 ft. tall (w/sliding doors)
1 - 18 ft. x 8 ft. tall (w/2 sliding doors)
4 - 8 ft. x 5 ft. tall (w/swinging doors)

CORRAL PANELS & GATES

10 - 5'x16'
1 -5'x16' w/ gate
7 - 12 ft. Farm Master (Heavy Duty)
6 -12 ft. Belen Panels
3 - 6'x16 (Bent)
4 - 12 ft .Farm Master
4 -12 ft.(Galvanized)
2-10 ft Powder River
1 - 8ft (Heavy Duty)

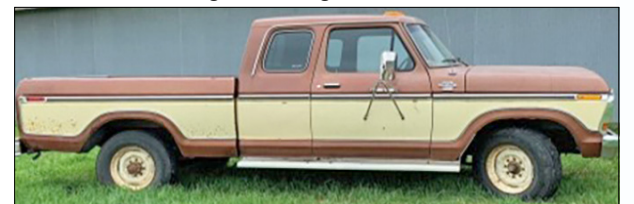
1-10ft. PANEL (w/ride thru gate)
1 -6ft (Ride Thru Gate)
1 -4ft(Ride Thru Gate)
2 -6ft (Swinging Gates)
3 -4ft (Swinging Gates)
3 -4x4 (Chain Link)

HORSE SUPPLIES & EQUIPMENT

Stall Dividers (from Horse Trailers)
Saddle Racks (3 to 5 Saddles)
Several Pony Harness (12" Collars)
Bandage Box
Boxes of Liniment Etc.
Vintage Dental Tools
Mouth Spectolium
Blankets & Sheets (Used)
Four Wheel Wood Pony Wagon
Two Wheel Pony Cart
Two Wheel All Metal Breaking Cart (Long Tongue)
Piles of harness/Hames
Harness Oil Dipping Vat

VEHICLES

1978 F250 Pickup – 106,000 miles – Runs perfect, EVERYTHING works, new tires, new battery, twin gas tanks, short box with gooseneck hitch, brakes and lights wired, Not a 4x4- Automatic, Interior near mint condition. Exterior very little rust-slight damage left rear corner of box.



2004 F150 Pickup – Crew cab – 198,000 miles – 4x4-runs perfect. Good tires, NEW spare tire, Gooseneck hitch, lights and brake wired, excellent interior, perfect glass- some body rust & slight damage to front left panel. Automatic transmission, Power windows, air conditioner, extra heavy duty shocks.



**MUCH, MUCH MORE TOO
NUMEROUS TO MENTION**

Not Responsible for Accidents or Thefts

Terms: Cash or Check

Lunch will be Available

NANCY MITCHELL, OWNER

For more Information give Nancy a call @ 605-216-9939

Auctioneers & Clerks – Gilbert Lutter & Associates

Gilbert Lutter

605-472-2650 or 605-460-1109

Joe Lutter

605-460-3176

Bryan Lenocker

605-460-0474

For Pictures Check web site www.lutterauction.com