

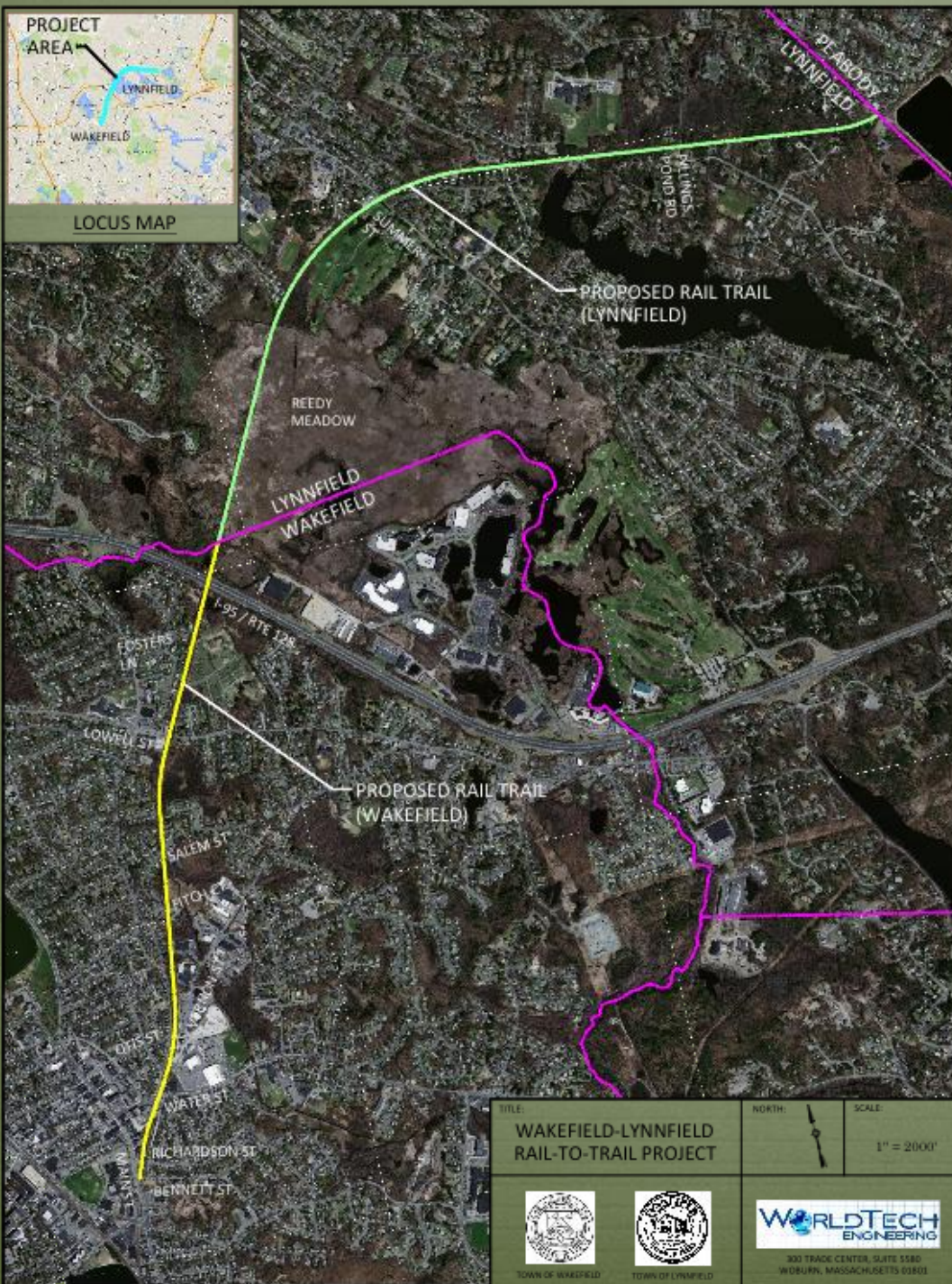


Lynnfield/Wakefield Rail Trail

Winter 2015

Help Us Convert this... into this





Where?

From Wakefield near commuter rail through Lynnfield via Reedy Meadow to the Peabody line

4.4 miles

(2.5 in Lynnfield)

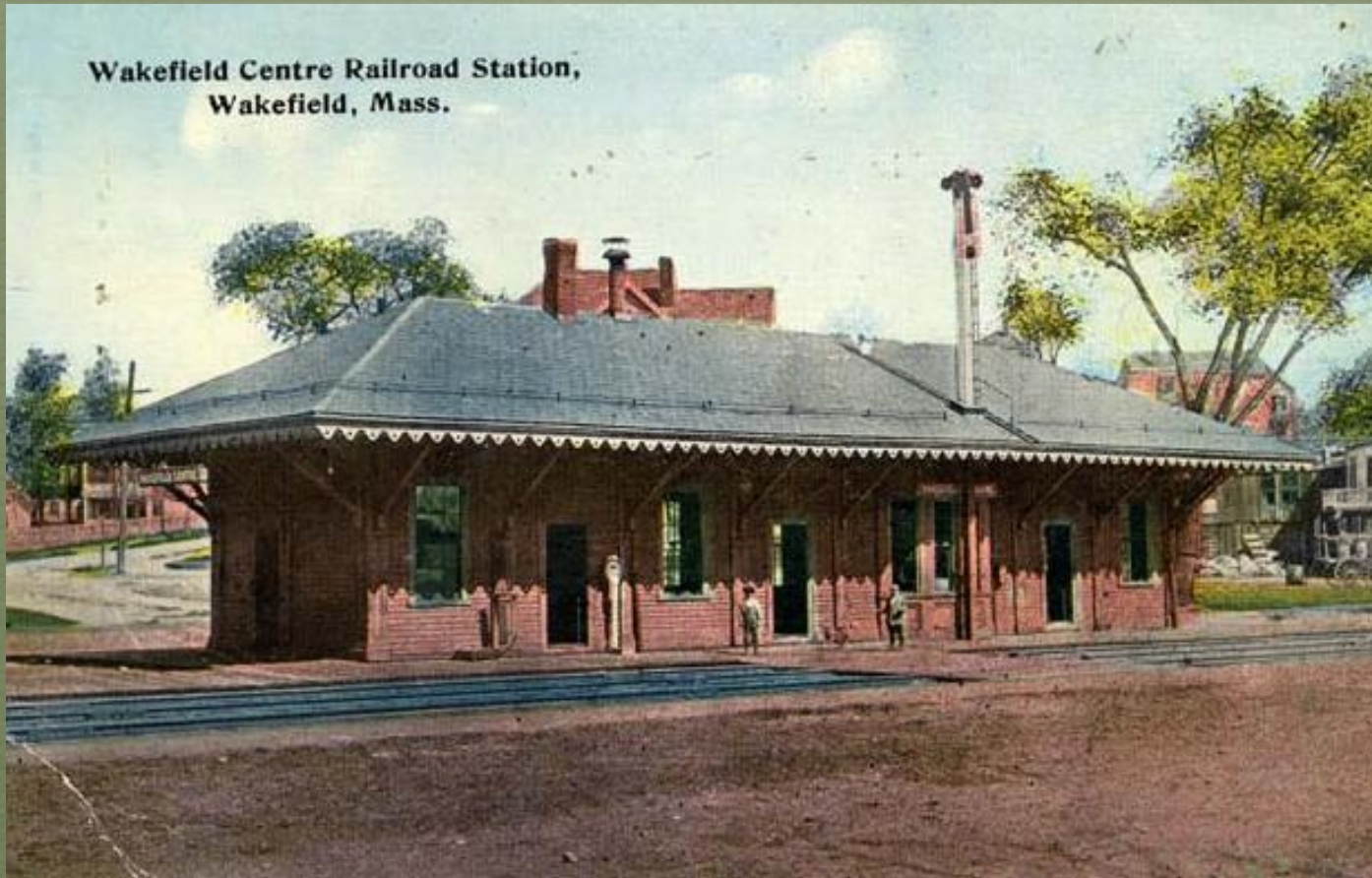


Wakefield Junction, Wakefield, Mass.

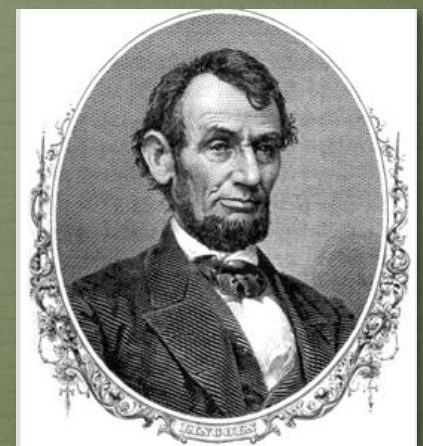
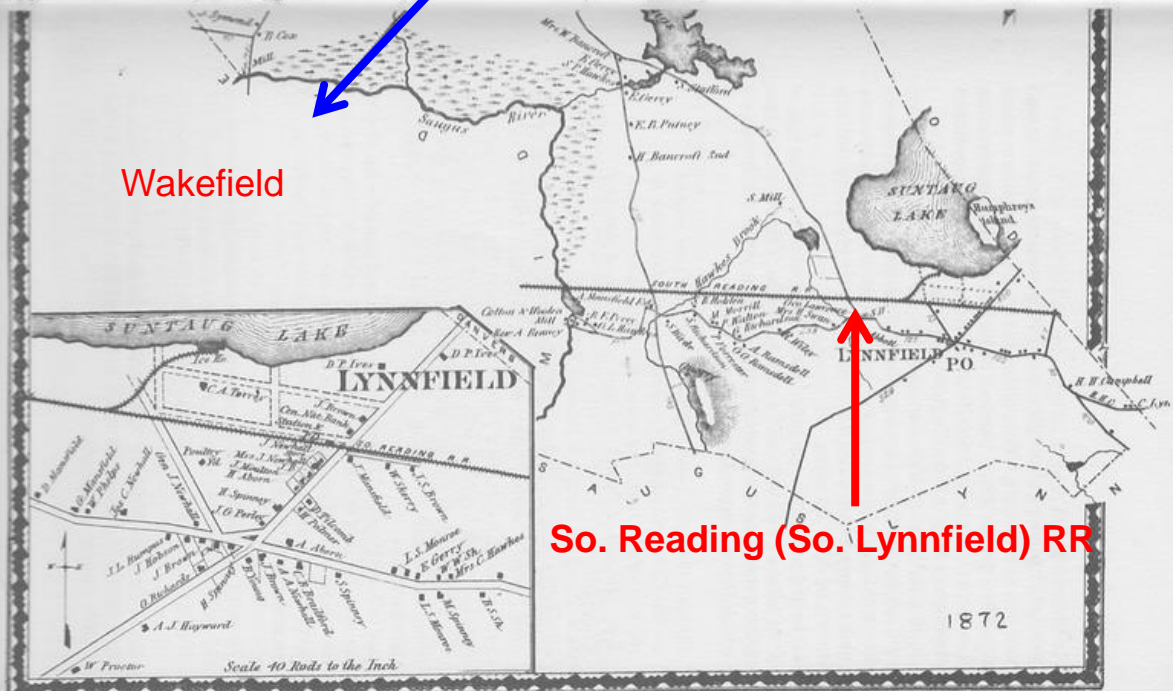
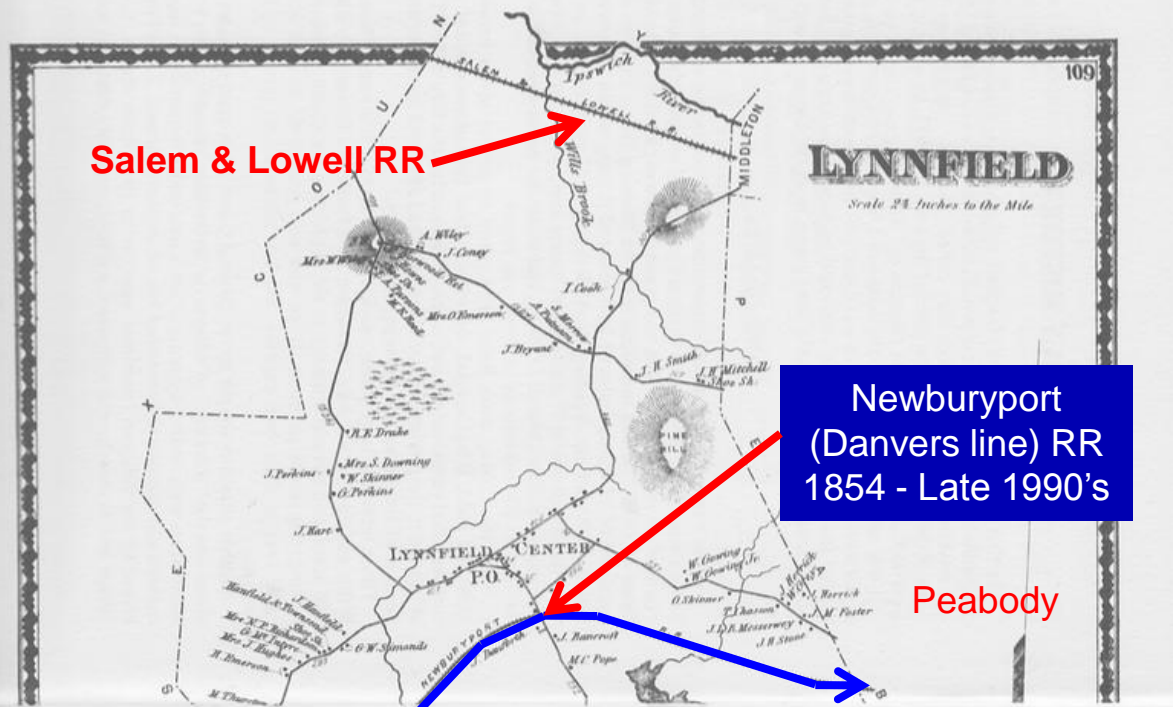
4162-PUBLISHED BY H. E. BUTLER

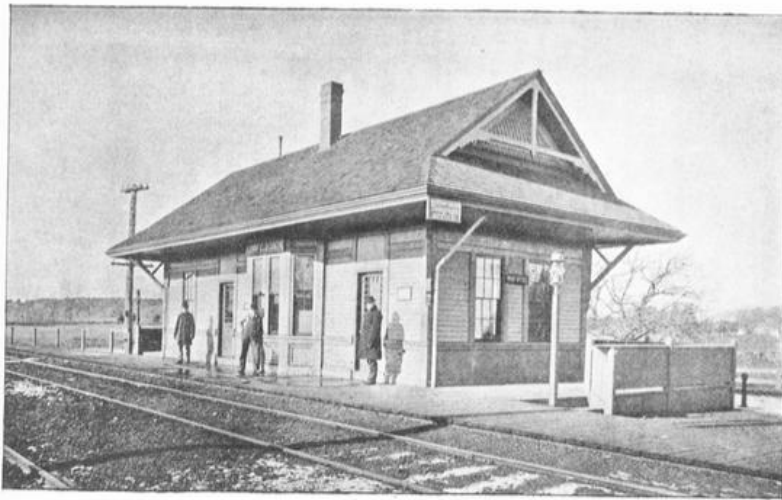
The Past

**Wakefield Centre Railroad Station,
Wakefield, Mass.**



1913





CENTRE STATION.

OLD RAILROAD STATION



NEW RAILROAD STATION

Early 20th century – 7-8 trains leaving and arriving from Boston. Saturday night theatre train

1940's-50's – 2 passenger trains each day until '59

Freight service until late '90's

Dorothy M: My Grandmother used to come by train from Boston to visit us

Kristine K: I remember clearly my mother and I getting in the car at dinner time to pick up my dad coming from work in Boston

The Future



A linear path where you can walk, bike, rejuvenate, explore and enjoy nature

Nearby Amenities

M = Middle School/fields

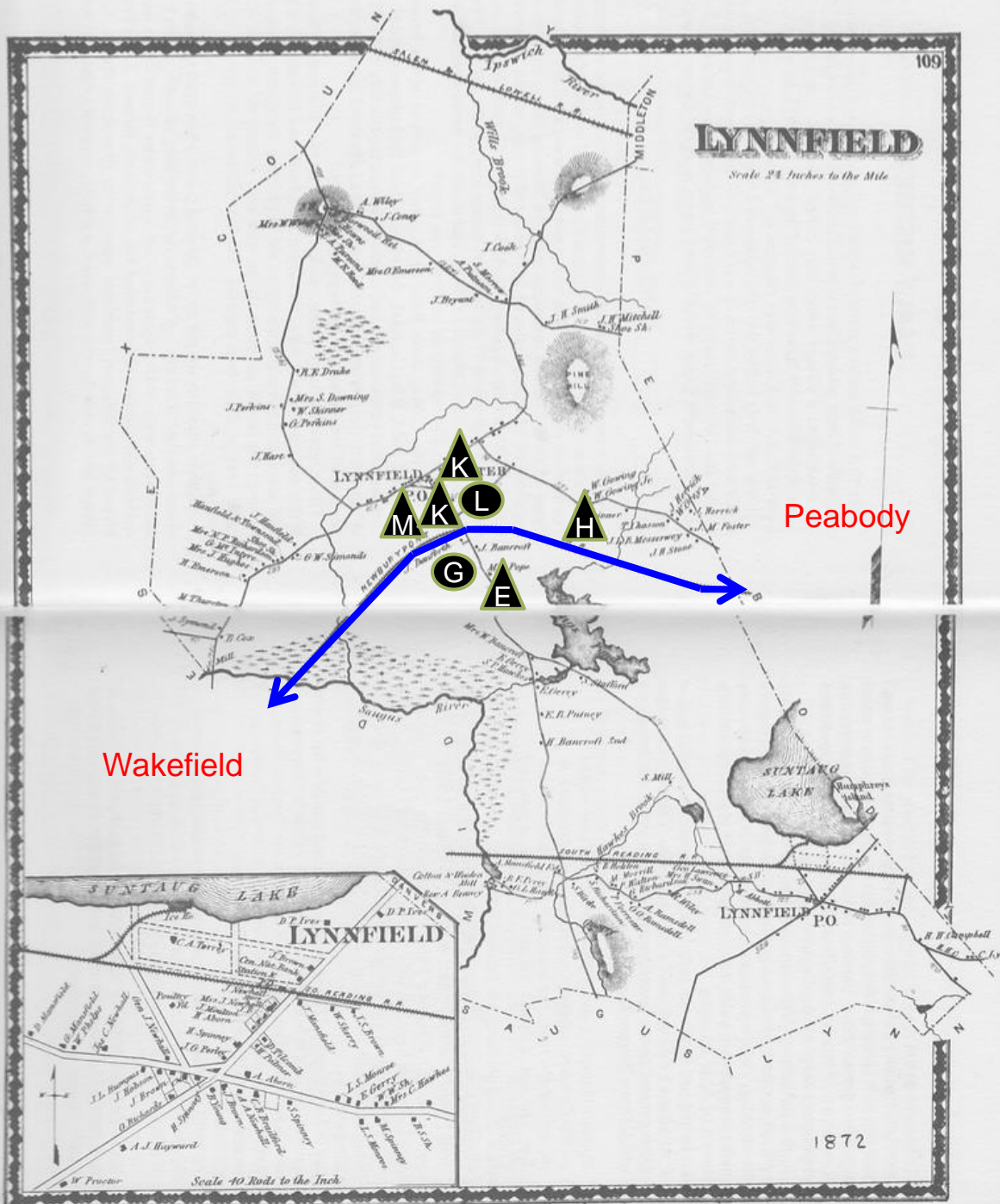
K = Bethlehem/Tower

E = Summer St. Elem.

H = High School/fields

G = Golf course

L = Library





Who uses these paths?



What Will You Gain?

Off road route to fields & 5 schools (K-12)

Rejuvenate your day

Healthy recreation for all ages/abilities

Meet friends at Centre Court

An easy walk across town to the library, post office, town offices & amenities

Move your exercise routine off road

Connect with friends and neighbors

Walk/run more

Bike to the train

Chance to explore Reedy Meadow

Enjoy some quiet “you time”

Fresh air

Show off the new baby and dog

Strengthened sense of community

Walk to play or watch a game

Even More Lynnfield Pride!

Project Milestones

- State approved funding of \$530,000
 - Feasibility study done - 2007
 - Preliminary engineering work underway - 2014-2015
- Town votes to accept the MBTA lease – April 2015
- Apply for State and Federal funding
- Complete design, input and approval phases
- Contractor selection and trail completion



Engaging Residents



Lynnfield Recreational Path Committee

Mike D'Amore, Janet Long,
Joe Markey, Mark McDonough
& Dick Simmons

FAQ's

- > Privacy – fencing included
- > Parking – designated spots
- > Crime – rare
- > Maintenance – low cost
- > Property Values – increase

136 Sky Way, Chatham
\$749,000

Charming 4 bedroom, 3 bath home offers private living spaces, picturesque gardens, **direct access to bike path...**

7 Solomon Pierce Rd.
Lexington \$1,598,000

This home defines the word elegant. The whole home is bathed in natural light. Dream location - **walk to** Lexington center, Harrington ES, and the **Minuteman bike path.**

Bike Path Towns

Wellesley Newburyport Chatham
Edgartown Lexington Amesbury
Cambridge Nantucket Danvers
Wenham Topsfield Bradford
Peabody Eastham Everett
Orleans Malden Brewster
Harwich Wellfleet Merrimack
Oak Bluffs Falmouth Arlington
Chelmsford Saugus Groton Boston
Woods Hole Methuen Marblehead Belmont
Provincetown Dennis Ayer Vineyard Haven Truro Salem

IN PROCESS

Wakefield Lynnfield
Somerville Winchester
Stoneham Swampscott
Woburn Carlisle Sudbury
Ipswich Acton Westford
Groveland Revere
Nahant

Don't Sit Back



- ✓ Stay informed/engaged
- ✓ Voice your support
- ✓ Offer your expertise
- ✓ **Vote YES at April 2015 town meeting**

How to Find Us

Website: www.Lynnfieldrailtrail.org

Email: info@lynnfieldrailtrail

Facebook:

Lynnfield rail trail

&

Wakefield/Lynnfield MA rail trail initiative





Push to Make it a Reality