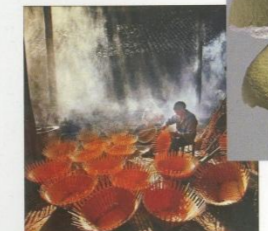




STOCK
CRAFTSOLID
CAMP*
CS0745
Nm 16000
100% Cotton
9G*1P



STOCK
CRAFTSOLID
LOAF
FY4420
Nm 26000
75% Cotton 25% Nylon
14G*1P

STOCK
CRAFTSOLID
MINT
FY0696
Nm 5000
84% Cotton 16% Nylon
5G*1P

HP1819 LINKS LINKS
MULTICOLOR

STOCK
CRAFTSOLID
FENDI ORGANIC
FY6319
Nm 16000
78% Organic Cotton 22% Nylon
12G*1P

STOCK
CRAFTSOLID
YALO
CS3440-1
Nm 3/54000
60% Viscose 40% Cotton
12G*1P

HP2086 2*1RIB

STOCK
CRAFTSOLID
OLA
FY8907
Nm 13000
80% Cotton 20% Nylon
12G*1P



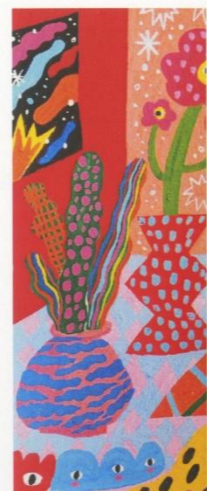
STOCK
CRAFTSOLID
OLINA
CS3417
Nm 11000
68% Cotton 32% Viscose
9G*1P

STOCK
CRAFTSOLID
ARINA
FY9249
Nm 7500
78% Cotton 22% Nylon
7G*1P

STOCK
CRAFTSOLID
CAPALA
CS3489
Nm 4200
60% Viscose 40% Cotton
5G*1P

STOCK
CRAFTSOLID
PAYA
FY9276
Nm 6300
70% Cotton 30% Nylon
HP2088 2*1RIB

STOCK
CRAFTSOLID
TABO
CS2090
Nm 8/44000
100% Paper
5G*1P

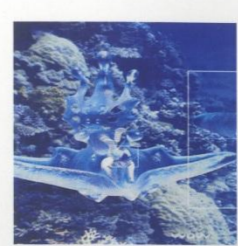


STOCK
CRAFTSOLID
TABO
CS0752
Nm 2/44000
100% Paper
14G*1P

STOCK
CRAFTSOLID
ANNIKA*
FY8818
Nm 1100
87% Cotton 13% Nylon
1.5G*1P

STOCK
CRAFTSOLID
KATIA
FY8399
Nm 2200
80% Cotton 20% Nylon
3G*1P

STOCK
CRAFTSOLID
ANNIKA*
FY8818
Nm 1100
87% Cotton 13% Nylon
1.5G*1P



STOCK
CRAFTSOLID
SINI
FY8564
Nm 3100
58% Cotton
22% Linen 20% Nylon
3G*1P

STOCK
CRAFTSOLID
YORI
FY8801
Nm 3000
100% Nylon
3G*1P

STOCK
CRAFTSOLID
KATIA
FY8399
Nm 2200
80% Cotton 20% Nylon
3G*1P

STOCK
CRAFTSOLID
ANNIKA*
FY8818
Nm 1100
87% Cotton 13% Nylon
1.5G*1P

STOCK
CRAFTSOLID
YORI
FY8801
Nm 3000
100% Nylon
3G*1P

STOCK
CRAFTSOLID
KATIA
FY8399
Nm 2200
80% Cotton 20% Nylon
3G*1P

STOCK
CRAFTSOLID
ANNIKA*
FY8818
Nm 1100
87% Cotton 13% Nylon
1.5G*1P



STOCK
CRAFTSOLID
HANS
CS3320
Nm 2/52000
60% Paper 40% Cotton
14G*1P

HP2087 2*1RIB

STOCK
CRAFTSOLID
SCOTT
CS3311
Nm 12500
93% Cotton 7% Polyester
12G*1P

STOCK
CRAFTSOLID
COCO
C5420
Nm 4400
97% Cotton 3% Polyester
5G*1P

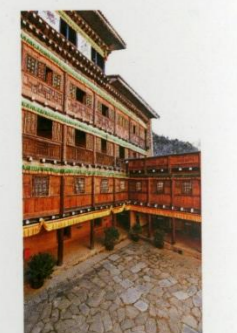
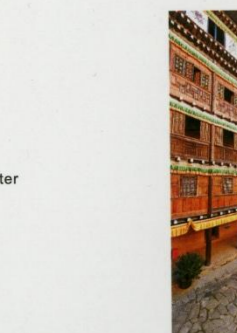
STOCK
CRAFTSOLID
TAMMY
CS3826
Nm 8200
96% Cotton 4% Polyester
7G*1P

HP2111 JERSEY STRIPES

STOCK
CRAFTSOLID
SCOTT
CS3311
Nm 12500
93% Cotton 7% Polyester
12G*1P

STOCK
CRAFTSOLID
COCO
C5420
Nm 4400
97% Cotton 3% Polyester
5G*1P

STOCK
CRAFTSOLID
TAMMY
CS3826
Nm 8200
96% Cotton 4% Polyester
7G*1P



GLASS FIBER

GLOW IN THE DARK

HEAT CHANGE

UV CHANGE

PRINT

FLUORESCENT

FOIL

REFLECTIVE

MULTISEN

ORY

STOCK **STOCK** **STOCK** **STOCK**

HP2080 JACQUARD

OREO*
C7523 Nm 105000 16G*1P
70%Bright Nylon 30%Polyester
C7523-1 Nm 105000 16G*1P
70%Dull Nylon 30%Polyester
C8099 Nm 90000 16G*1P
100%Bright Polyester
CS2296 Nm 105000 16G*1P
70%Bright Nylon 30%Polyester

STOCK **STOCK** **STOCK** **STOCK**

HP2081 JACQUARD

FRED*
FY8299
Nm 12000
80%Metallised Fibre
20%Polyester

PATA
FY9212
Nm 16000
61%Cotton 39%Nylon

LIDO*
FY7766
Nm 5200
88%Viscose
10%Metallised Fibre 2%Nylon

ALIDA*
FY9270
Nm 6800
100%Polyester

STOCK **STOCK** **STOCK** **STOCK**

AGGIES* 14G*1P
CS0051
Nm 24000
95%Viscose 5%Metallised Fibre

CORTA* 12G*1P
FY8420
Nm 15000
84%Cotton 12%Post-consumer
Recycled Polyester 4%Acrylic

ARIA* 7G*1P
FY8693
Nm 7500
65%Ecovero Viscose
35%Metallised Fibre

CAENVIS* 12G*1P
CS3412
Nm 13500
100%Cotton

HP2112 OTTOMAN

STOCK **STOCK** **STOCK** **STOCK**

HP1849 CABLE

SYNA
FY7461 Nm 8000 5G*1P
FY6447 Nm 4800 5G*1P
100%GRS Polyester

FUFU 9G*1P
FY8085
Nm 11000
65%Nylon 35%Paper

KASPO 5G*1P
FY9148
Nm 4200
100%Polyester

ARON* 3G*1P
FY8887
Nm 4000
75%Polyester 25%Nylon

HP1833 POINTELLE CABLE

CORTA* 12G*1P
FY8420
Nm 15000
84%Cotton 12%Post-consumer
Recycled Polyester 4%Acrylic

ECO VERO™

STOCK **STOCK** **STOCK** **STOCK**

HP2083 JERSEY+2*TRIB

PETRA
CS3281 Nm 20000 14G*1P
CS2474 Nm 3/75000 14G*1P
91%Polyester Reflective 9%Nylon
REDO*

REDO* 12G*1P
Nm 12500
100%Polyester Reflective

TOPIA* 16G*1P
FY4085
Nm 31700
51%Nylon 49%Viscose

HP2084 DOUBLE FACE JACQUARD

SILKORA* 12G*1P
FY9229
Nm 12000
79%Viscose 21%Nylon

STOCK **STOCK** **STOCK** **STOCK**

GREENERY
CS3449 Nm 4/75000 14G*1P
CS2474 Nm 3/75000 14G*1P
100%Naia™ Acetate

SELLA 16G*1P
CS3478
Nm 30000
100%Viscose

HP2110 LINKS LINKS

EVOKA 14G*1P
CS3603
Nm 2/48000
58%Viscose 40%Aramid
2%Conductive Fibre



DOMESTIC 摩登花园 SIMPLICITY



STOCK
LINENVERSE
5G*1P VERSE*
C2452-3
Nm 4800
100%Linen

STOCK
LINENVERSE
VERSE* 3G*1P
C2452-2
Nm 3000
100%Linen

STOCK
LINENVERSE
VERSE* 7G*1P
C4811-1
Nm 7200
100%Linen

STOCK
KIT
VERSE* 7G*1P
C4811-2
Nm 12000
100%Linen

STOCK
KIT
TEA
C3117-2 Nm 4/115000 14G*1P
Nm 2/115000 16G*1P
60%Silk 40%Linen

HP2091 POINTELLE

STOCK
ROSSI
ROSSI* 12G*1P
CS3645
Nm 17000
71%Linen 29%Polyester

STOCK
LINENVERSE
NELIA 9G*1P
CS3727
Nm 15000
55%Linen 45%GRS Polyester

STOCK
LINENVERSE
COLLIN 14G*1P
CS3638
Nm 20000
84%Linen 16%Nylon

STOCK
CRAFTSOLID
BESSIE 14G*1P
CS3648
Nm 3/58000
87%Linen 13%Kapok

STOCK
CRAFTSOLID
Winni 16G*1P
FY8822
Nm 40000
100%Linen

STOCK
CRAFTSOLID
ELTON 7G*1P
CS1103
Nm 6800
100%Mercerized Cotton

HP2092 CABLE

STOCK
KIT
DENISE 7G*1P
CS1489
Nm 6000
50%Silk 50%Cotton

STOCK
RADAR
RADAR* 5G*1P
CS1337
Nm 6000
55%Linen 45%Cotton

STOCK
CRAFTSOLID
BORIS 7G*1P
CS3131
Nm 8000
100%Linen

STOCK
CRAFTSOLID
BESSIE 14G*1P
CS3648
Nm 3/58000
87%Linen 13%Kapok

STOCK
CRAFTSOLID
Winni 16G*1P
FY8822
Nm 40000
100%Linen

STOCK
CRAFTSOLID
ELTON 7G*1P
CS1103
Nm 6800
100%Mercerized Cotton

HP2094 TRANSFER STITCH

STOCK
CRAFTSOLID
SIRI 1.5G*1P
FY9104
Nm 1800
100%Cotton

STOCK
GASWIG
EVE 1.5G*1P
FY9228
Nm 1800
100%Cotton

STOCK
GASWIG
EVE 1.5G*1P
FY9228
Nm 1800
100%Cotton

STOCK
ZAC* 7G*1P
CS3630
Nm 6900
54%Cotton 46%Silk

STOCK
PAULA
PAULA* 3G*1P
FY9320
Nm 1700
40%Polyester
30%Cotton 30%Latex

STOCK
CRAFTSOLID
ZAC* 7G*1P
CS3630
Nm 6900
54%Cotton 46%Silk

HP2095 TUCK STRIPES

STOCK
CRAFTSOLID
PURA 14G*1P
C3767
Nm 2/50000
63%Hemp 37%Organic Cotton

STOCK
CRAFTSOLID
POCA 7G*1P
FY9024
Nm 8200
76%Cotton 24%Nylon

STOCK
CRAFTSOLID
MOTO 14G*1P
CS3047
Nm 2/54000
100%Cotton

STOCK
CRAFTSOLID
AVAI 7G*1P
FY8448
Nm 8000
84%Viscose 16%Nylon

STOCK
CRAFTSOLID
MOTO 14G*1P
CS3047
Nm 2/54000
100%Cotton

STOCK
CRAFTSOLID
AVAI 7G*1P
FY8448
Nm 8000
84%Viscose 16%Nylon

HP2093 JACQUARD

CONNECTED

梦境写作

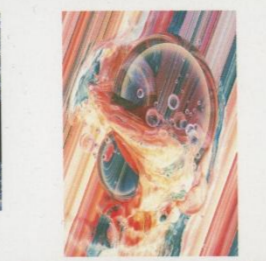
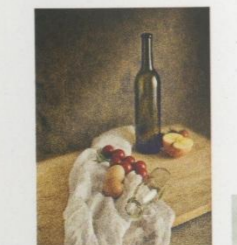


CONNOR 16G*1P
CS1217
Nm 3/105000
85% Cotton 15% Silk

HP2104 TUCK JERSEY



DALA 16G*1P
CS3604
Nm 2/60000
60% Viscose 40% Sorona



TALISA 16G*1P
CS3802
Nm 36000
83% Eco Viscose
17% Recycled Nylon

ALIN 16G*1P
CS3590
Nm 2/70000
80% Viscose 20% Polyester



ALFRED* 14G*1P
C3916
Nm 36000
83% Dull Viscose 17% Elite

ALFRED II 16G*1P
CS0756
Nm 36000
83% Bright Viscose 17% Elite

HP2058 BIRDEYE



ENZO 16G*1P
CS2289
Nm 2/90000
55% Cotton 45% Viscose



CRAFT* 14G*1P
C3403 Nm 4/101000
C4014 Nm 2/101000
C3302 Nm 3/101000
100% Cotton

SYLVIA 16G*1P
CS3255
Nm 2/88000
76% Dull Viscose 24% Nylon



CRAFT* 14G*1P
C3403 Nm 4/101000
C4014 Nm 2/101000
C3302 Nm 3/101000
100% Cotton



HP2010 2*1RIB



NOYA 16G*1P
CS3534
Nm 43000
58% Viscose 42% Cotton

HP2113 BIRDEYE



TINY 18G*1P
CS2434
Nm 24000
65% Viscose 35% Nylon



JENIA 18G*1P
CS3612
Nm 3/150000
67% Viscose 33% Elite



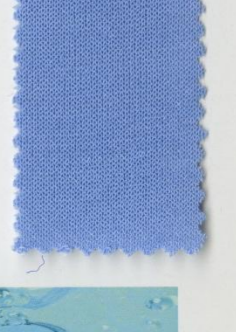
CELINA 16G*1P
CS3751
Nm 2/80000
66% Viscose
17% Silk 17% Nylon



HP2107 OTTOMAN

MOSS 14G*1P
CS0876
Nm 58000
91% Nylon 9% Spandex

LUMMI 3G*1P
FY8496
Nm 3700
78% Silk 22% Nylon



PETIT 14G*1P
C8708
Nm 26000
88% Bright Viscose 12% Nylon



LUMMI 3G*1P
FY8496
Nm 3700
78% Silk 22% Nylon

EVOKA 14G*1P
CS3530
Nm 28000
96% Viscose 4% Elite

KAREN 16G*1P
CS3079
Nm 2/55000
85% Dull Viscose
15% Polyester

HP2109 2*1RIB

MILANO 16G*1P



OPULA 14G*1P
CS3322
Nm 2/50000
70% Viscose
30% GRS Polyester

FIORA 12G*1P
FY8832
Nm 14800
74% Wool 26% Silk



ELYSIA 5G*1P
FY8711
Nm 5100
100% Viscose

BALBOA II 16G*1P
CS0823
Nm 33000
77% Bright Viscose 23% Nylon



HP2106 POINTELLE

FULL NEEDLE 14G*1P