

Aerial Map



©2018 AgriData, Inc.

map center: 42.812030, -93.922016

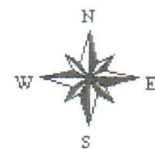
0ft 866ft 1732ft



Maps Provided By:

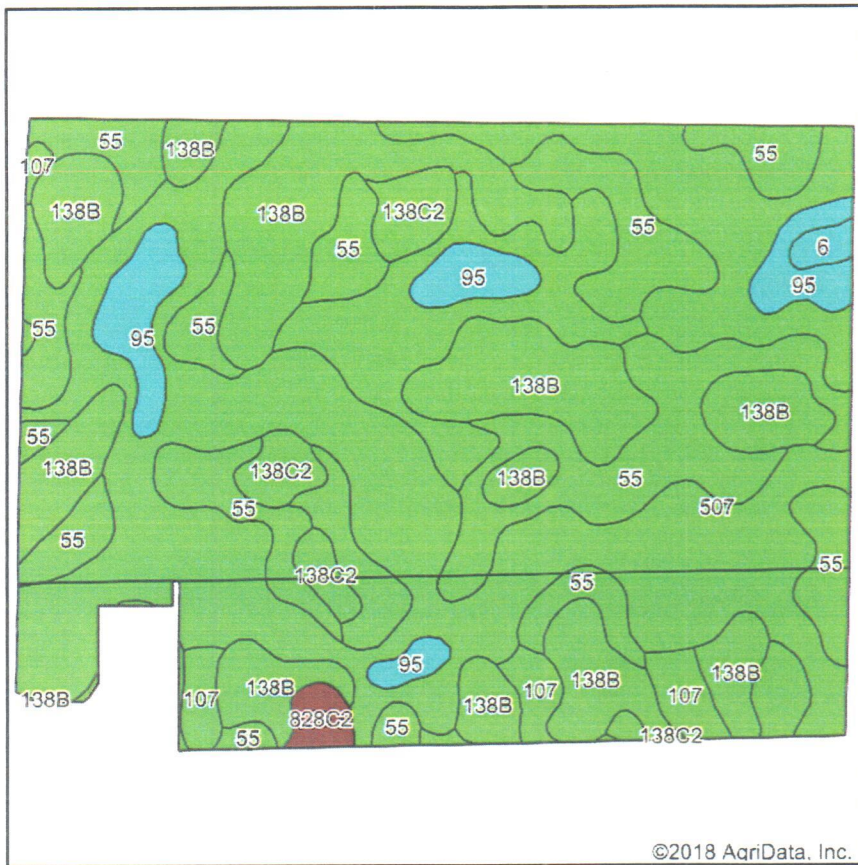


4-92N-26W
Wright County
Iowa



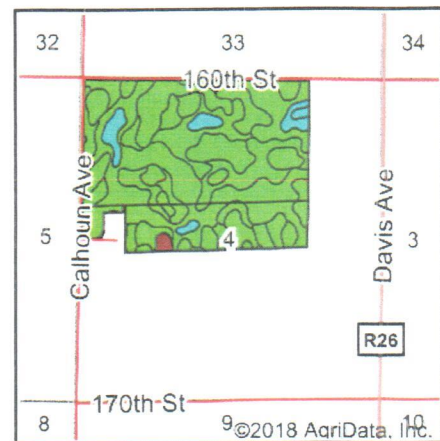
9/20/2018

Soils Map



Soils data provided by USDA and NRCS.

©2018 AgriData, Inc.



State: **Iowa**
 County: **Wright**
 Location: **4-92N-26W**
 Township: **Liberty**
 Acres: **260.91**
 Date: **9/20/2018**



Maps Provided By:



Area Symbol: IA197, Soil Area Version: 24

Code	Soil Description	Acres	Percent of field	CSR2 Legend	Water Table	Restrictive Layer	Septic Limits	Foundation Limits	Non-Irr Class *c	CSR2**	CSR	NCCPI Soybeans
507	Canisteo clay loam, 0 to 2 percent slopes	90.36	34.6%		2ft.	> 6.5ft.	very limited	very limited	IIw	84	78	79
138B	Clarion loam, 2 to 6 percent slopes	63.07	24.2%		2.9ft.	> 6.5ft.	very limited	somewhat limited	Ile	89	80	83
55	Nicollet clay loam, 1 to 3 percent slopes	60.31	23.1%		1.5ft.	> 6.5ft.	very limited	very limited	Iw	89	88	78
107	Webster clay loam, 0 to 2 percent slopes	24.15	9.3%		0ft.	> 6.5ft.	very limited	very limited	IIw	86	83	80
95	Harps clay loam, 0 to 2 percent slopes	12.53	4.8%		0ft.	> 6.5ft.	very limited	very limited	IIw	72	62	77
138C2	Clarion loam, 6 to 10 percent slopes, moderately eroded	7.47	2.9%		4.6ft.	> 6.5ft.	somewhat limited	somewhat limited	IIle	83	63	65
828C2	Zenon sandy loam, 5 to 9 percent slopes, moderately eroded	1.87	0.7%		> 6.5ft.	> 6.5ft.	very limited	not limited	IIle	43	32	28
6	Okoboji silty clay loam, 0 to 1 percent slopes	1.15	0.4%		0ft.	> 6.5ft.	very limited	very limited	IIIw	59	57	77
Weighted Average										85.5	79.6	79

**IA has updated the CSR values for each county to CSR2.

*c: Using Capabilities Class Dominant Condition Aggregation Method

Soils data provided by USDA and NRCS.

