

**Regular Sale  
Every Tuesday**

Hay & Straw 9:30  
Springers, Dairy  
Cows 11:00  
Sheep, Goats,  
Hogs 12:00  
Followed by Bull  
Calves & Heifer  
Calves  
Breeder Bulls &  
Feeders 2:00  
Butcher Bulls, Fats  
& Cows 3:00

601 E Lake Street  
PO Box 279



Topeka, IN 46571

**SPECIAL  
SALES**

Springer Sale  
8/10  
Feeder Sale  
8/15

Phone (260)593-2522  
Fax (260)593-2258

**Owners:  
Rick & Andrea  
Welsh  
AC31600016**

[www.topekalivestock.com](http://www.topekalivestock.com)

Driving Horse  
Auction 8/26  
Labor Day Pony  
Auction 9/4  
Alt. Animal 10/6  
Fresian Fall  
Classic 10/20-21

**Market Report 8/1 \* 645 Total Head Sold**

**DAIRY**

Dairy Cows	15	Top of \$1625
Springers	13	Top of \$1550
Heifer Calves	6	Top of \$ 200
Breeder Bulls	6	Top of \$1235

**FEEDERS & DAIRY FEEDERS**

Dairy Feeders	40	Top of \$775
Group of 3	780 lbs.	\$775
Group of 4	647 lbs.	\$750
Group of 3	570 lbs.	\$675
Group of 5	273 lbs.	\$300
Feeder Cattle	27	Top of \$1.31/lb.
Group of 2 Mix	470 lbs.	\$1.31/lb.

**HAY & STRAW**

Hay	26 loads	\$ 40-\$170/ton
Straw	2 loads	\$ 70-\$ 95/ton

**SLAUGHTER**

Mixed		Top of \$118
	80	Top 25 \$110-\$118 (\$113 avg)
Holsteins		Top of \$100
		Top 10 \$93.50-\$100 (\$96.35 avg)
Cows	142	Top of \$74.50
		Top 25 \$68-\$74.50 (\$69.82 avg)
		Top 50 \$63-\$74.50 (\$67.58 avg)
		Top 100 \$55-\$74.50 (\$62.95 avg)
		Bottom 50 \$20-\$58 (\$49.49 avg)
Bulls	3	Top of \$97.50

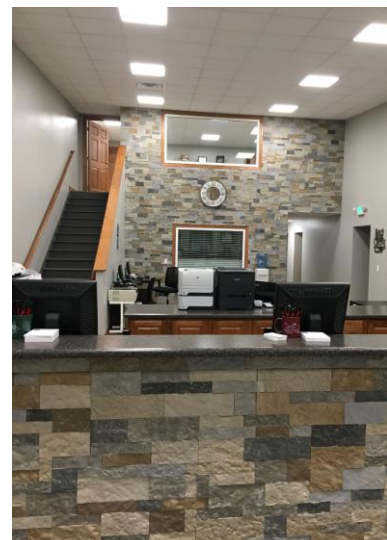
**BULL CALVES**

Bull Calves	171	\$10-\$195 (\$98.11 avg)
	Top 10	\$1.30- \$1.95/lb. (\$1.41/lb. avg)
	Top 25	\$1.25- \$1.95/lb. (\$1.33/lb. avg)
	Top 50	\$1.20- \$1.95/lb. (\$1.26/lb. avg)
	Top 100	\$1.00- \$1.95/lb. (\$1.18/lb. avg)

**SHEEP/GOATS/HOGS**

Sheep	34	\$80-\$182.50
Ewes	\$80	Lambs \$145-\$182.50
Hogs	45	\$5-\$77.50
Hogs	\$5-\$67	Sows \$47.50-\$77.50
Goats	9	\$65-\$200

**A Note from Rick:** August 1<sup>st</sup> marked exactly one year since Andrea and I took over Topeka Livestock Auction. The entire year has been a whirlwind. We have learned so much in a year's time and have so many plans for the future of TLA. We have enjoyed almost every day, even when it's hitting the fan. We love the auction and are so excited about where we will be in another year. Our kids love Westview and have adjusted better than we could have anticipated. I am truly blessed to have such a wonderful and adventurous family to take this giant leap in life. We absolutely enjoy what we are doing and look forward to coming to work every day to see what happens next. We are surrounded by a great community that has welcomed and supported us from day one. We are so grateful to all of those people. A year ago, when we started this market report, I didn't realize how hard this little paragraph would be to write every week. I am stuck in a rut of saying the same things week to week. But, I'm going to keep plugging away and call it like I see it. If I repeat myself, I apologize. But the market is the market. This week the market was pretty much unchanged. If you were looking for great words of wisdom, maybe I'll find them by next week. Come check out TLA!



*So excited to be in our new office!*

**DRIVING HORSE  
AUCTION 8/26**

Catalog Deadline 6:30am  
Horse Driving 7:30am  
Auction 9:30 am  
**Contact: Lavern Bontrager**  
260-593-2740

**J&S Labor Day  
Pony Auction  
September 4<sup>th</sup>  
9:30 am**



**OCTOBER 20<sup>th</sup>-21<sup>st</sup>**

**Topeka Draft Horse & Carriage Auction 10/31-11/3**  
**Consignment Deadline August 15<sup>th</sup>**

**Contact: Devon Bontrager or Freeman Yoder**  
**(260) 768-7756 (260) 593-0284**