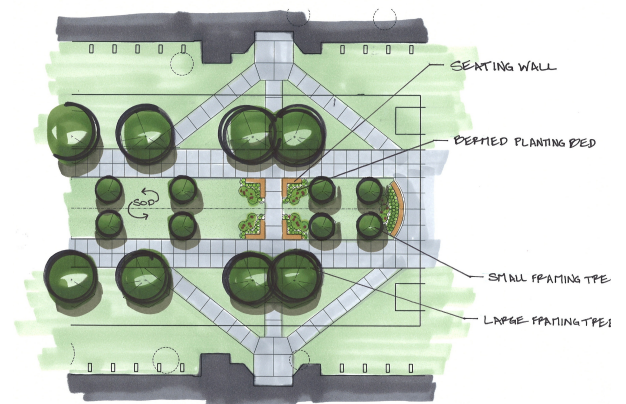


UNK Pedestrian Plazas and Mall

University of Nebraska at Kearney, Kearney, Nebraska



The University of Nebraska at Kearney's Landscape Visionary Plan is a forward looking document to assist in maintaining a vibrant campus quality that will continue to attract students and faculty into the future. The Visionary Plan was commissioned and completed while Mark Jobman, Principal of Elevate Design Studios was employed at a previous firm. The plan was developed in 2006-2007 looking at all site aspects of the campus life. The 10-year plan will guide the replacement of aging plant material, promote the creation of an enlivened place where people can interact, and encourage the preservation of significant historic features that bring a rich sense of place, tradition, and heritage.

The first stages of implementation of the Visionary Plan was to revitalize the student pedestrian circulation features around campus. Focus was brought to new pedestrian plazas outside each residential hall along with the redevelopment and revitalization of the pedestrian mall at University of

Nebraska at Kearney.

Each plaza was programmed to maximize unique features along students for ample programming space for studying, programs, and demonstrations. The revitalization of the pedestrian mall developed more precision circulation patterns, seating, water features, and landscapes.

Budget: \$950,000.00

Completed: 2008

Reference: Sinclair Hille Architects, Lincoln, Nebraska



* Project was commissioned and completed while Mark Jobman, Principal of Elevate Design Studios, was employed at Previous Firm.