

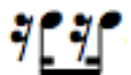
# SHORTCUT HOME

Dana Wilson

<p><b><u>KEYS</u></b></p> <p>None – tonality based on accidentals</p>	<p><b><u>GRADE</u></b></p> <p>4</p>		<p><b><u>PERCUSSION REQUIREMENTS</u></b></p> <p>Timpani            Medium and large tom-toms            Tam-tam            Afushi            Ride cymbal            Small suspended cymbal            Small triangle            Small, medium and large tom-toms            Snare drum            Glockenspiel            Conga drum            Mark tree            Xylophone            Bongos            Bass drum</p>
<p><b><u>METER</u></b></p> <p><b>3 2 4</b> <b>4 4 4</b></p>	<p><b><u>GENRE</u></b></p> <p>Fanfare</p>	<p><b><u>PERFORMANCE TIME</u></b></p> <p>ca. 3:00</p>	
			<p><b><u>PUBLISHER</u></b></p> <p>Boosey &amp; Hawkes, Inc. (2003)</p>

**TECHNICAL CONSIDERATIONS**

Meter changes  
Percussion demands  
Percussion rolls  
Dynamic contrast  
Articulation clarity  
Accidentals  
St. mute  
Individual parts  
All instruments featured  
Syncopated entrances  
Staggered parts - all parts important  
*Lip gliss*  
Plunger mute

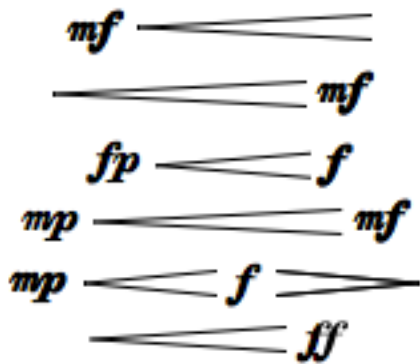


**TEMPO(S)/STYLE(S)**

♩ = 112

<u>SOLOS</u>	<u>CUES</u>	<u>VOCABULARY</u>
Small suspended cymbal	None	St. mute (melody) a2 (choke) (head) plunger open (soli) (l.g.) (l.v.) catch breaths (if more than 1 bassoon/tuba alternate every 2 measures) (rim) (lip gliss)

<u>DYNAMICS</u>	<u>ARTICULATIONS</u>
<p style="text-align: center;"> <i>p</i>  <i>mp</i>  <i>mf</i>  <i>f</i>  <i>ff</i>  <i>fff</i>  <i>sfz</i> </p> <p> <i>mf</i> ————— <i>f</i>  <i>sfz</i> ————— <i>f</i>  ————— <i>f</i>  <i>f</i> —————  <i>f</i> ————— <i>mp</i> ————— <i>f</i>  —————  <i>mp</i> ————— </p>	Staccato Accent Ties Accent/staccato Slurs Tenuto



### CONDUCTOR CONSIDERATIONS

Tempo  
Ostinato  
Meter changes  
Stylistic conducting  
Articulations  
Rhythmic changes  
16<sup>th</sup> note lines  
Characteristic tone in brass with mute  
Jazz feel  
Dynamic contrast