

# 4,000 sq.ft. For Lease

## 26409 Northline Rd, Taylor, MI 48180



Listing ID: 30270445  
 Status: Active  
 Property Type: Industrial For Lease  
 Industrial Type: Industrial-Business Park, Manufacturing  
 Contiguous Space: 4,000 SF  
 Total Available: 4,000 SF  
 Lease Rate:  
 Lease Type: Modified Gross  
 Ceiling: 18 - 20 ft.  
 Office SF: 960 SF  
 Drive-In Bays: 1 Bay



### Overview/Comments

4,000 sq.ft. of light industrial for lease in Taylor Trade Center 1.

Call Rea Construction at 734-946-8730 for a tour.

<http://www.rea-construction.net/>

### QR Code

Scan this image with your mobile device:



### General Information

Tax ID/APN:	263960770	Gross Building Area:	78,000 SF
Industrial Type:	Industrial-Business Park, Manufacturing, Light Industrial, Warehouse/Distribution	Building/Unit Size (RSF):	4,000 SF
Zoning:	LIGHT INDUSTRIAL	Usable Size (USF):	4,000 SF
Building Name:	Taylor Trade Center 1	Land Area:	3.53 Acres

### Available Space

Suite/Unit Number:	26409	Rent Escalators:	Fixed Lease
Space Available:	4,000 SF	Conference Rooms:	1
Minimum Divisible:	4,000 SF	Offices:	2
Maximum Contiguous:	4,000 SF	Office SF:	960 SF
Space Type:	Relet	Parking Spaces:	8
Date Available:	05/01/2018	Drive In Bays:	1
Lease Rate:		Ceiling Height:	20
Lease Type:	Modified Gross	Clear Height:	18

Space Description 4,000 sq.ft. of light industrial for lease in Taylor Trade Center 1. Call Rea Construction at 734-946-8730 for a tour. <http://www.rea-construction.net/>

### Area & Location

Property Located Between:	Beech Daly and Lang
Highway Access:	I94
Airports:	Detroit Metropolitan

### Building Related

Tenancy:	Multiple Tenants	Construction/Siding:	Brick
Total Number of Buildings:	2	Parking Ratio:	1 (per 1000 SF)
Number of Stories:	1	Parking Type:	Surface
Office Space SF:	960 SF	Parking Description:	Asphalt
Property Condition:	Good	Total Parking Spaces:	8
Year Built:	1972	Column Spacing:	40
Roof Type:	Flat	Passenger Elevators:	0

Freight Elevators: 0  
Amps: 400  
Volts: 240  
X-Phase: 3

Heat Type: Natural Gas  
Heat Source: Central, Radiant  
Lighting: Metal Halide  
Internet Access: Cable

### Land Related

Zoning Description:	L 1	Sewer Type:	Municipal
Water Service:	Municipal	Legal Description:	60-077-99-0002-014 Parcel ID

### Location

Address:	26409 Northline Rd, Taylor, MI 48180	MSA:	Detroit-Warren-Dearborn
County:	Wayne	Submarket:	Airport District



### Property Images



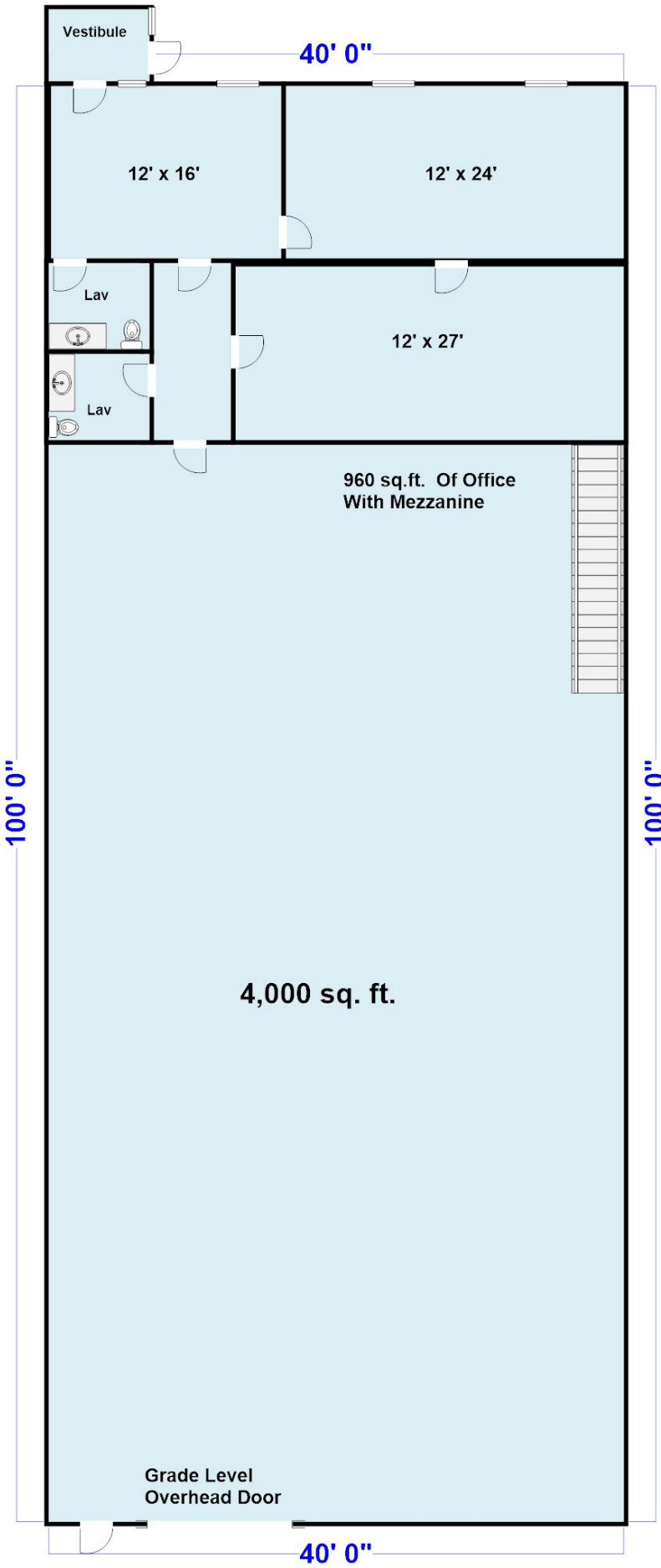
IMG\_3081



taylor trade center 2



26469 Northline (11)



## Property Contacts

---



### **Yvon Rea**

Rea Construction

248-217-0482 [M]

734-946-8730 [O]

[darren@reaconstruction.net](mailto:darren@reaconstruction.net)