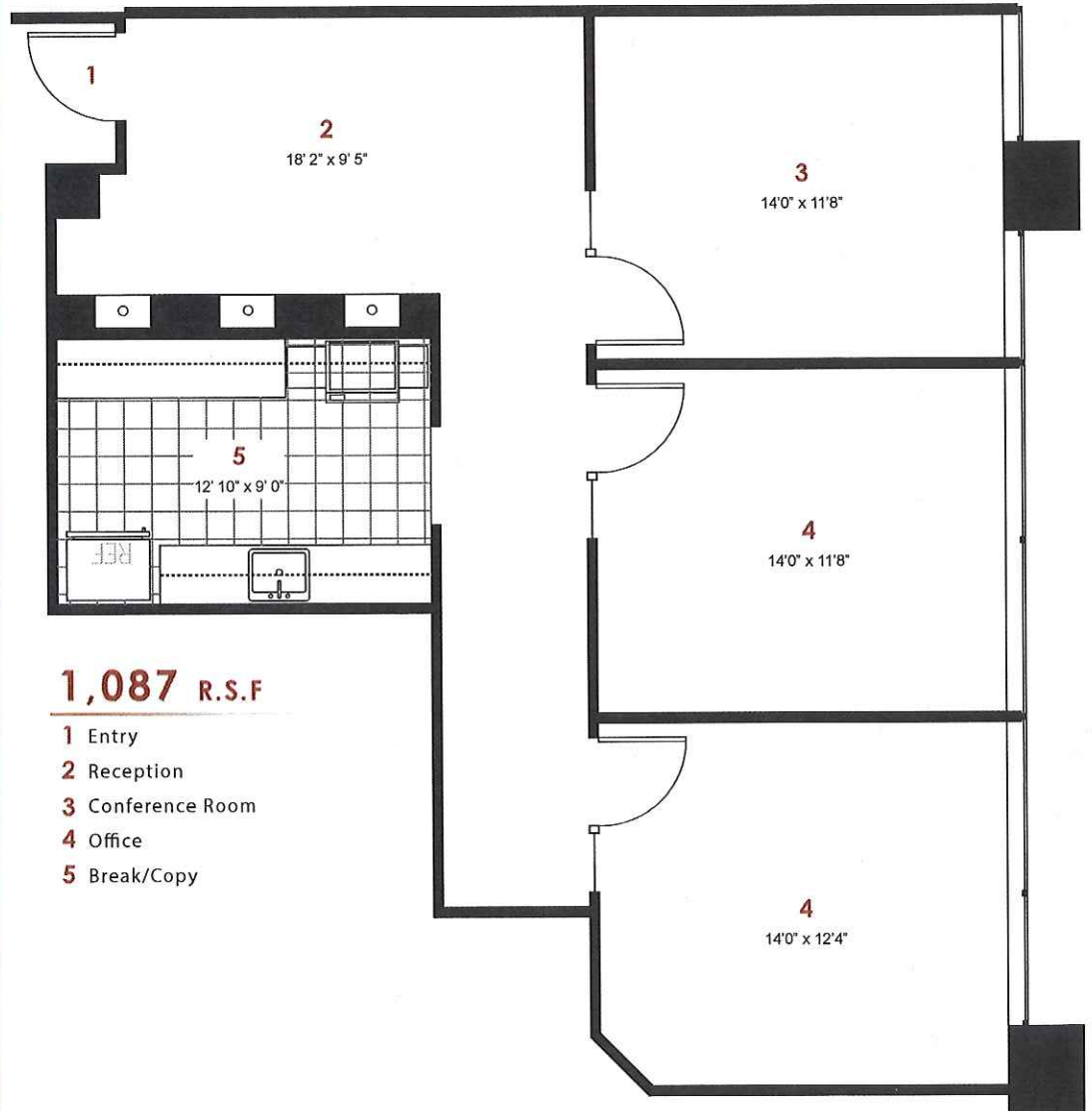
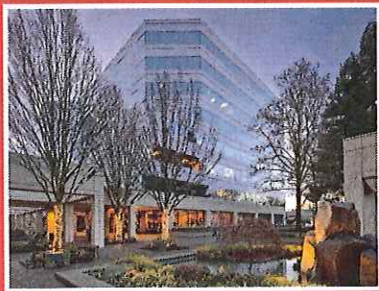


# CASCADE TOWERS

## East Tower Suite 125

20819 72nd Avenue South, Kent, WA 98032

Twin 8-Story Class A Office Towers with a Fountain and Central Pedestrian Promenade.



(253) 395-9226

Rob Samuels | Leasing Coordinator  
RobS@FountainheadNW.com

CREATING THE **BEST PLACE**  
FOR THE **BEST PEOPLE** TO WORK.

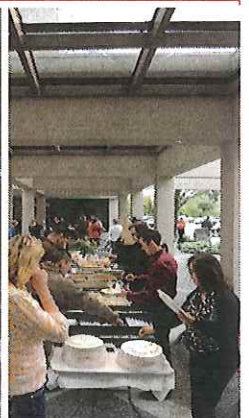


www.FountainheadNorthwest.com

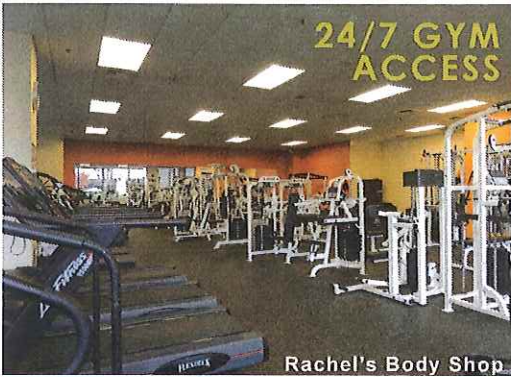
The Cascade Towers at CenterPoint Corporate Park.

# ENGAGE YOUR EMPLOYEE'S NEEDS...

## CULTURE & AMENITIES

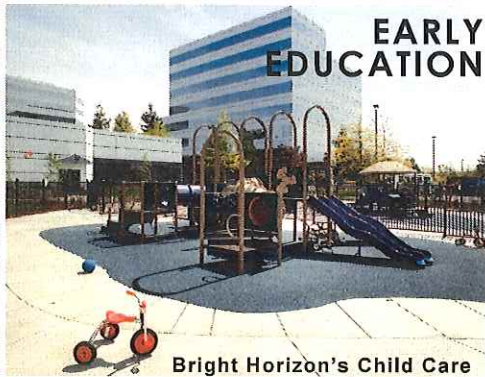


- 1/4 & 1/2 Mile Outdoor Fitness Paths with Stretching Station
- On-Site Management, Engineering & Design Team
- Corporate Barbeque Areas
- Nature trail along Mill Creek
- Conference Center with rooms up to 200 people



**24/7 GYM ACCESS**

Rachel's Body Shop



**EARLY EDUCATION**

Bright Horizon's Child Care



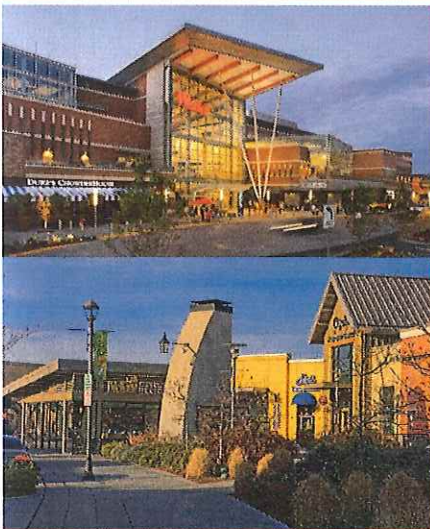
**FULL SERVICE**

Alki Bakery Cafe

Full service 24/7 fitness center & personal training ([www.rachelsbodyshop.com](http://www.rachelsbodyshop.com))

Providing infant to pre-kindergarten programs ([www.brighthouse.com](http://www.brighthouse.com))

Providing breakfast, lunch & catering services. ([www.alkibakery.com](http://www.alkibakery.com))



**CLOSE TO EVERYTHING..**

- Shopping
- Hotels
- Restaurants
- Entertainment
- Schools
- Housing

**+ ON SITE TRANSPORTATION ROUTES**

FOR MORE INFORMATION  
[www.FountainheadNorthwest.com](http://www.FountainheadNorthwest.com)  
 253-395-9226



**Access to FOUR major highways!**

