

Garden Design Course

Janice Burley – Down 2 Earth

About the course

Do you want to make more of your garden? Does it look abandoned in winter? Have you thought of a design, but aren't sure if it will work? If so, this is the course for you.

This course is aimed at people who have some understanding of gardening, and want to develop their design skills. For example, you probably know your shrubs from your annuals and perennials, and could probably name a few of them. It will introduce the principles of garden design in the context of an average-sized garden, how to carry out a basic survey of your existing garden, and how to plan your planting for year-round interest.

**Outline Programme – Weekend course over two Saturdays in Autumn.
10 a.m. to 4 p.m. Dates to be arranged**

- Day 1** Introduction to garden design. How to survey your garden. Getting ideas for designs.
Principles of garden design.
Creating basic plans and layouts. Practicalities vs aesthetics.
Please have a go at drawing a layout for your garden after this session and before the next one. This can then be referred to and more detail added in the last two sessions.
- Day 2** Using plants in your design – colours, shapes, proportions, year round colour.
Incorporating herbs and vegetables
How to create your garden. Developing a project plan. Finalising designs for your own garden

Throughout the course, there will be time to looking at completed projects and projects in progress in Janice's garden, as well as time to ask questions and discuss ideas.

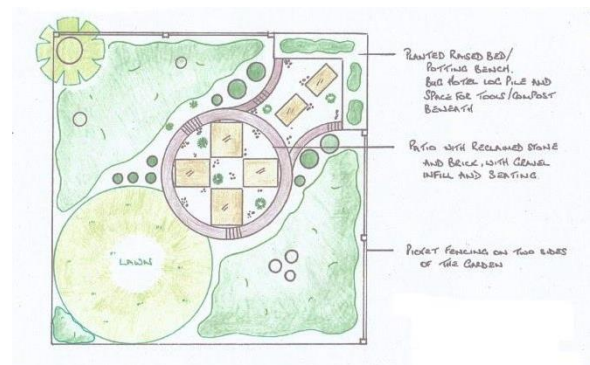
Please bring with you a notepad and pictures of gardens you like.

About Janice Burley and Down 2 Earth

Janice spent 20 years developing her last garden, and it was re-designed many times. She has recently moved to a much larger garden, which she is gradually re-designing. She gardens organically and as environmentally-friendly as possible, with wildlife in mind. This is reflected in her designs and suggestions.

She has a certificate in garden design from Broomfield College in Derbyshire, and has designed and developed a number of private gardens. She also designed and project managed the implementation of a new public garden at a Church.

She also designed and built a Show Garden at Harrogate Autumn Flower Show 2016 which received a Silver Medal. It was based on a simple design (right), which a competent gardener should be able to re-create.



Course Cost £70 per person