

DRAWING NUMBER
463 182 page

DRAWING NUMBER
463 182 page

DRAWING NUMBER
463 182 page

DF
PLAN FIELD

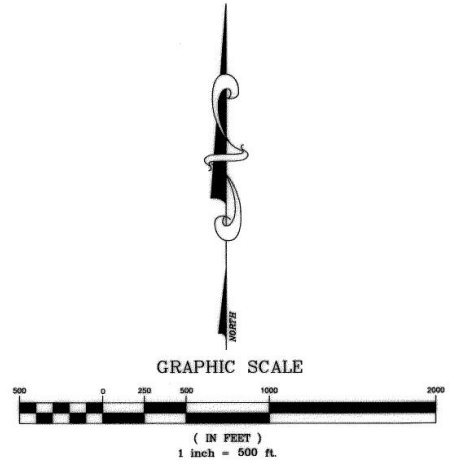
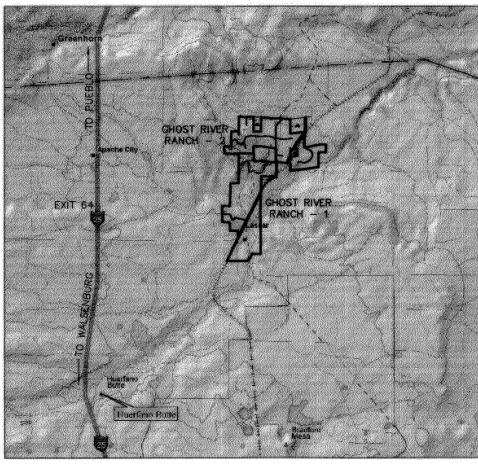
1 of 2 pages
361522
Page 1 of 2
12/30/2003 02:16P
Huerfano Cty, CO Judy Benline RSP R 21.00 D 0.00

GHOST RIVER RANCH, FILING 2

Map **463**
PKT **10**
Fldr **1**

LOCATED IN PART OF SECTIONS 18, 19, AND 20, TOWNSHIP 25 SOUTH, RANGE 65 WEST OF THE 6TH P.M., AND ALL OF SECTION 13, AND PART OF SECTIONS 14, 22, 23, AND 24, OF TOWNSHIP 25 SOUTH, RANGE 66 WEST OF THE 6TH P.M., COUNTY OF HUERFANO, STATE OF COLORADO.

VICINITY MAP
NOT TO SCALE



DESCRIPTION

TOWNSHIP 25 SOUTH, RANGE 65 WEST OF THE 6TH P.M., COUNTY OF HUERFANO, STATE OF COLORADO.

SECTION 18: SW1/4

SECTION 19: NE1/4NW1/4, S1/2NW1/4, NE1/4.

SECTION 20: NW1/4NW1/4

TOWNSHIP 25 SOUTH, RANGE 66 WEST OF THE 6TH P.M. COUNTY OF HUERFANO, STATE OF COLORADO.

SECTION 13: ALL

SECTION 14: E1/2NW1/4, W1/2NE1/4, AND THE S1/2.

SECTION 15: ALL THAT PORTION OF THE E1/2E1/2SE1/4 LYING EAST OF AN AGREED BOUNDARY LINE RECORDED ON JULY 21, 1994 AS MAP NUMBER 17-S-72 IN POCKET 16, FOLDER 1 IN THE HUERFANO COUNTY CLERK AND RECORDERS OFFICE.

SECTION 22: NE1/4NE1/4 EXCEPT THAT PORTION LYING WEST AND NORTH OF AN AGREED BOUNDARY LINE RECORDED ON JULY 21, 1994 AS MAP NUMBER 17-S-72 IN POCKET 16, FOLDER 1 IN THE HUERFANO COUNTY CLERK AND RECORDERS OFFICE, AND ALL THAT PORTION OF THE SE1/4NE1/4 LYING NORTH OF SAID AGREED BOUNDARY LINE.

SECTION 23: NE1/4NW1/4, NW1/4NE1/4, AND NW1/4NW1/4, AND ALL THAT PART OF THE SW1/4NW1/4 LYING NORTH OF AN AGREED BOUNDARY LINE RECORDED ON JULY 21, 1994 AS MAP NUMBER 17-S-72 IN POCKET 16, FOLDER 1 IN THE HUERFANO COUNTY CLERK AND RECORDERS OFFICE.

SECTION 24: NE1/4

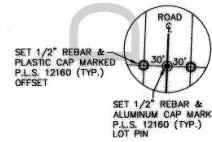
ACCESS ROADS

THE ROADS, AS DEPICTED ON THE PLAT(S) FOR GHOST RIVER RANCH, FILING 2, ARE HEREBY SET ASIDE AS 60 FOOT WIDE ROADWAY AND UTILITY EASEMENTS FOR THE USE AND BENEFIT OF ALL GHOST RIVER RANCH, FILING 2 PARCEL OWNERS, THEIR HEIRS, SUCCESSORS AND ASSIGNS, AS WELL AS STONECLIFF INVESTMENTS, LLC THEIR HEIRS, SUCCESSORS AND ASSIGNS. ALL ROADS WITHIN THE BOUNDARY OF GHOST RIVER RANCH, FILING 2, AS DEPICTED ON THE PLAT(S) FOR GHOST RIVER RANCH, FILING 2, WILL BE OWNED BY INDIVIDUAL TRACT OWNERS SUBJECT TO AN EASEMENT OF INGRESS AND EGRESS OVER AND ACROSS SUCH ROADS TO ALL TRACT OWNERS WITHIN GHOST RIVER RANCH, FILINGS 1 AND 2. THE ROADS ARE PRIVATE AND NOT PUBLICLY DEDICATED. ALL CUL-DE-SACS HAVE A RADIUS OF 60 FEET UNLESS OTHERWISE STATED.

UTILITY EASEMENT

A UTILITY EASEMENT IS HEREBY SET ASIDE, BEING 10 FEET WIDE ON EACH SIDE OF ALL SIDE AND COMMON REAR LOT LINES AND 20 FEET WIDE ON THE INTERIOR SIDE OF ALL EXTERIOR TRACT LINES (EXCLUSIVE OF ROAD FRONTAGES) FOR THE USE AND BENEFIT OF ALL GHOST RIVER RANCH TRACT OWNERS, THEIR HEIRS, SUCCESSORS AND ASSIGNS, AS WELL AS STONECLIFF INVESTMENTS, LLC THEIR HEIRS, SUCCESSORS AND ASSIGNS.

NOTE: LOT CORNERS ARE OFFSET WITH 1/2" X 24" REBAR WITH PLASTIC CAPS MARKED P.L.S. 12160. LOT CORNERS ARE MARKED WITH 1/2" X 24" REBAR WITH ALUMINUM CAPS MARKED P.L.S. 12160.



DEDICATION

THE FOLLOWING MANAGER HAS CAUSED THE PARCEL SHOWN AND DESCRIBED HEREON TO BE SURVEYED AND SUBDIVIDED INTO TRACTS AND EASEMENTS AS SHOWN, DEFINED AND DESCRIBED HEREON TO BE KNOWN AS THE "GHOST RIVER RANCH, FILING 2 SUBDIVISION. ALL EASEMENTS ARE HEREBY SET ASIDE ACCORDING TO THE DEFINITIONS HEREON.

IN WITNESS WHEREOF

STEPHEN J. MELVICK HAS CAUSED THE PRESENTS TO BE EXECUTED THIS 19th DAY OF December, 2003 A.D.

SIGNED [Signature]
STEPHEN J. MELVICK
STONE CLIFF INVESTMENTS, LLC
STATE OF COLORADO)
COUNTY OF EL PASO) SS



THE FORGOING DEDICATION WAS ACKNOWLEDGED BEFORE ME THIS 19th DAY OF December, 2003 A.D. BY [Signature] AND [Signature]
WITNESS MY HAND AND SEAL [Signature]
MY COMMISSION EXPIRES 2/3/2007

COUNTY COMMISSIONERS CERTIFICATE

THE BUYER HEREBY ACKNOWLEDGES THAT THE BOARD OF COUNTY COMMISSIONERS OF HUERFANO COUNTY, COLORADO IS NOT RESPONSIBLE IN ANY FASHION FOR THE CONSTRUCTION OR MAINTENANCE OF ACCESS DRIVES OR PUBLIC ROADS OR STREETS INDICATED ON THIS PLAN. PUBLIC SERVICE VEHICLES EMERGENCY VEHICLES AND OTHER VEHICLES, AND PERSONS WITHIN THEM HAVING LEGITIMATE BUSINESS TO TRANSACT SHALL HAVE THE RIGHT OF INGRESS, EGRESS AND REGRESS BY MEANS OF THE DESIGNATED ACCESS DRIVE EASEMENT. THE BUYER ALSO HEREBY ACKNOWLEDGES THAT THE RIGHT OF SUCH ACCESS ON ROADS AND STREETS NOT CONSTRUCTED FOR OR BY, NOR DEDICATED TO OR ACCEPTED BY AND NOT MAINTAINED BY THE HUERFANO COUNTY DOES NOT CONSTITUTE AN ASSURANCE OF PROMPT, TIMELY ARRIVAL OF PUBLIC SAFETY VEHICLES OR THE PROMPT, TIMELY DELIVERY OF PUBLIC SAFETY SERVICES.

SIGNED _____ DATE _____
BUYER:

SURVEYOR'S CERTIFICATE

I, GARY L. TERRY, A DULY REGISTERED SURVEYOR IN THE STATE OF COLORADO, DO HEREBY CERTIFY THAT THE SURVEY REPRESENTED BY THIS PLAT WAS SURVEYED UNDER MY DIRECTION AND IS CORRECT TO THE BEST OF MY KNOWLEDGE AND BELIEF.

GARY L. TERRY DATE:
COLORADO P.L.S. 12160

STONE CLIFF INVESTMENTS, LLC
RECEPTION NO. 356304

TERRY SURVEYING, INC.
P.O. BOX 851, TRINIDAD, CO. 81082 (719) 846-6921

GHOST RIVER RANCH, FILING 2
LOCATED IN PART OF SECTIONS 18, 19, AND 20, TOWNSHIP 25 SOUTH, RANGE 65 WEST OF THE 6TH P.M., AND ALL OF SECTION 13, AND PART OF SECTIONS 14, 22, 23, AND 24, OF TOWNSHIP 25 SOUTH, RANGE 66 WEST OF THE 6TH P.M., COUNTY OF HUERFANO, STATE OF COLORADO.
STONE CLIFF INVESTMENTS, LLC. P.O. BOX 62052, COLORADO SPRINGS, COLORADO 80962, (719)277-7278

DRAWN BY:	GT-II	DATE:	NOV. 24, 2003
CHECKED BY:	G. TERRY	DRAWING NO.:	913-03A
JOB NO.:	3175-03	SHEET	1 OF 3

GHOST RIVER RANCH, FILING 2

LOCATED IN PART OF SECTIONS 18, 19, AND 20, TOWNSHIP 25 SOUTH, RANGE 65 WEST OF THE 6TH P.M., AND ALL OF SECTION 13, AND PART OF SECTIONS 14, 22, 23, AND 24, OF TOWNSHIP 25 SOUTH, RANGE 66 WEST OF THE 6TH P.M., COUNTY OF HUERFANO, STATE OF COLORADO.

361522
Map 463
PKT 10
FIDR 1

DATE: MARCH 10, 2003
DRAWING NO.: 913-03A
SHEET 2 OF 3

DRAWN BY: GT-II
CHECKED BY: C. TERRY
JOB NO.: 3175-03

GHOST RIVER RANCH, FILING 2

LOCATED IN PART OF SECTIONS 18, 19, AND 20, TOWNSHIP 25 SOUTH, RANGE 65 WEST OF THE 6TH P.M., AND ALL OF SECTION 13, AND PART OF SECTIONS 14, 22, 23, AND 24, OF TOWNSHIP 25 SOUTH, RANGE 66 WEST OF THE 6TH P.M., COUNTY OF HUERFANO, STATE OF COLORADO.

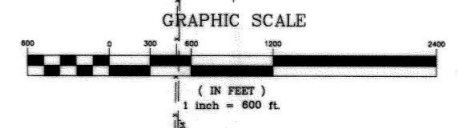
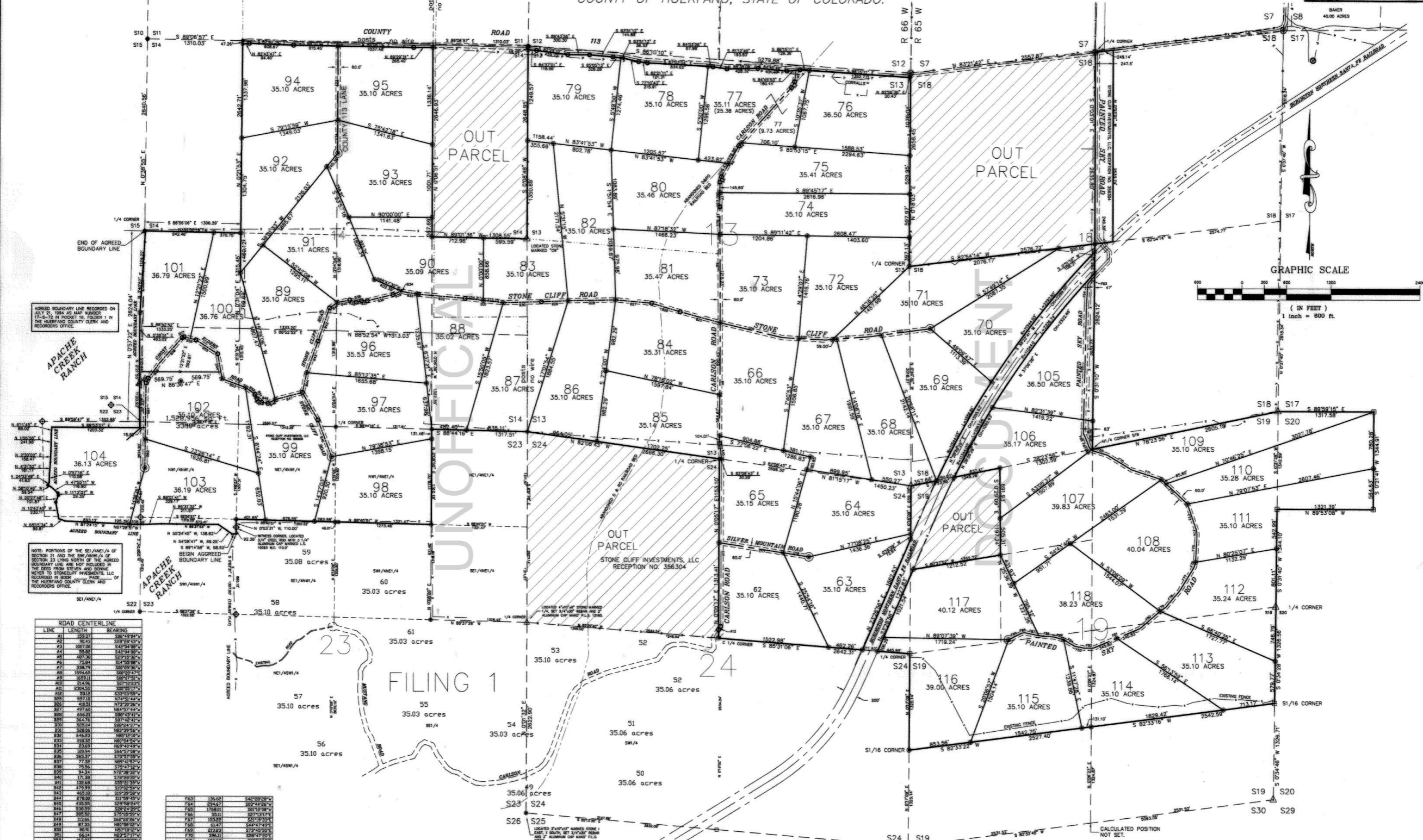
TERRY SURVEYING, INC.

P.O. BOX 851, TRINIDAD, CO. 81082 (719) 846-6921

DRAWING NUMBER
463 p12

DRAWING NUMBER
463 p12

DRAWING NUMBER
463 p12



LINE	LENGTH	BEARING
A1	36.43	S 89° 59' 57" E
A2	207.00	S 89° 59' 57" E
A3	36.43	S 89° 59' 57" E
A4	487.38	S 89° 59' 57" E
A5	36.43	S 89° 59' 57" E
A6	36.43	S 89° 59' 57" E
A7	36.43	S 89° 59' 57" E
A8	36.43	S 89° 59' 57" E
A9	36.43	S 89° 59' 57" E
A10	36.43	S 89° 59' 57" E
A11	36.43	S 89° 59' 57" E
A12	36.43	S 89° 59' 57" E
A13	36.43	S 89° 59' 57" E
A14	36.43	S 89° 59' 57" E
A15	36.43	S 89° 59' 57" E
A16	36.43	S 89° 59' 57" E
A17	36.43	S 89° 59' 57" E
A18	36.43	S 89° 59' 57" E
A19	36.43	S 89° 59' 57" E
A20	36.43	S 89° 59' 57" E
A21	36.43	S 89° 59' 57" E
A22	36.43	S 89° 59' 57" E
A23	36.43	S 89° 59' 57" E
A24	36.43	S 89° 59' 57" E
A25	36.43	S 89° 59' 57" E
A26	36.43	S 89° 59' 57" E
A27	36.43	S 89° 59' 57" E
A28	36.43	S 89° 59' 57" E
A29	36.43	S 89° 59' 57" E
A30	36.43	S 89° 59' 57" E
A31	36.43	S 89° 59' 57" E
A32	36.43	S 89° 59' 57" E
A33	36.43	S 89° 59' 57" E
A34	36.43	S 89° 59' 57" E
A35	36.43	S 89° 59' 57" E
A36	36.43	S 89° 59' 57" E
A37	36.43	S 89° 59' 57" E
A38	36.43	S 89° 59' 57" E
A39	36.43	S 89° 59' 57" E
A40	36.43	S 89° 59' 57" E
A41	36.43	S 89° 59' 57" E
A42	36.43	S 89° 59' 57" E
A43	36.43	S 89° 59' 57" E
A44	36.43	S 89° 59' 57" E
A45	36.43	S 89° 59' 57" E
A46	36.43	S 89° 59' 57" E
A47	36.43	S 89° 59' 57" E
A48	36.43	S 89° 59' 57" E
A49	36.43	S 89° 59' 57" E
A50	36.43	S 89° 59' 57" E
A51	36.43	S 89° 59' 57" E
A52	36.43	S 89° 59' 57" E
A53	36.43	S 89° 59' 57" E
A54	36.43	S 89° 59' 57" E
A55	36.43	S 89° 59' 57" E
A56	36.43	S 89° 59' 57" E
A57	36.43	S 89° 59' 57" E
A58	36.43	S 89° 59' 57" E
A59	36.43	S 89° 59' 57" E
A60	36.43	S 89° 59' 57" E
A61	36.43	S 89° 59' 57" E
A62	36.43	S 89° 59' 57" E
A63	36.43	S 89° 59' 57" E
A64	36.43	S 89° 59' 57" E
A65	36.43	S 89° 59' 57" E
A66	36.43	S 89° 59' 57" E
A67	36.43	S 89° 59' 57" E
A68	36.43	S 89° 59' 57" E
A69	36.43	S 89° 59' 57" E
A70	36.43	S 89° 59' 57" E
A71	36.43	S 89° 59' 57" E
A72	36.43	S 89° 59' 57" E
A73	36.43	S 89° 59' 57" E
A74	36.43	S 89° 59' 57" E
A75	36.43	S 89° 59' 57" E
A76	36.43	S 89° 59' 57" E
A77	36.43	S 89° 59' 57" E
A78	36.43	S 89° 59' 57" E
A79	36.43	S 89° 59' 57" E
A80	36.43	S 89° 59' 57" E
A81	36.43	S 89° 59' 57" E
A82	36.43	S 89° 59' 57" E
A83	36.43	S 89° 59' 57" E
A84	36.43	S 89° 59' 57" E
A85	36.43	S 89° 59' 57" E
A86	36.43	S 89° 59' 57" E
A87	36.43	S 89° 59' 57" E
A88	36.43	S 89° 59' 57" E
A89	36.43	S 89° 59' 57" E
A90	36.43	S 89° 59' 57" E
A91	36.43	S 89° 59' 57" E
A92	36.43	S 89° 59' 57" E
A93	36.43	S 89° 59' 57" E
A94	36.43	S 89° 59' 57" E
A95	36.43	S 89° 59' 57" E
A96	36.43	S 89° 59' 57" E
A97	36.43	S 89° 59' 57" E
A98	36.43	S 89° 59' 57" E
A99	36.43	S 89° 59' 57" E
A100	36.43	S 89° 59' 57" E

- LEGEND**
- LOCATED MARKED STONE, SET 3/4" x 30" REBAR AND ALUMINUM CAP MARKED P.L.S. 12160.
 - SET 1/2" x 24" REBAR AND ALUMINUM CAP MARKED P.L.S. 12160.
 - SET 3/4" x 30" REBAR AND ALUMINUM CAP MARKED P.L.S. 12160 (SECTION CORNERS).
 - SET 1/2" x 24" REBAR AND ALUMINUM CAP MARKED P.L.S. 12160 (LOT CORNERS).
 - LOCATED 3/4" ROD AND 3.25 ALUMINUM CAP MARKED P.L.S. 10093.
 - LOCATED CONCRETE MONUMENT WITH 2.2" ALUMINUM CAP MARKED L.S. 4738.
 - LOCATED REBAR AND ALUMINUM CAP MARKED L.S. 16163.
 - LOCATED REBAR AND ALUMINUM CAP MARKED L.S. 26296.
 - EXISTING FENCE LINE AND AGREED BOUNDARY LINE.
 - LOCATED 3/4" ROD AND 1.5" ALUMINUM CAP.
 - LOCATED 5/8" REBAR, NO CAP.

STONE CLIFF INVESTMENTS, LLC
RECEPTION NO. 356304

T 25 S

R 66 W
R 65 W