

# TENSIONING SOLUTIONS Inc.

"Your simple, low-cost banner Stretching System"

Newsletter - June 3, 2015

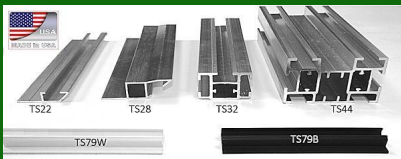
## IN THIS ISSUE:

- [Stretching Banners](#)
- [TS22 - One Front Channel](#)
- [TS28 - One Rear Channel](#)
- [TS32 - 3 Channels](#)
- [TS44 - 6 Channels](#)

## SO MANY APPLICATIONS...



REALIZED WITH A HAND-FULL OF EXTRUSIONS

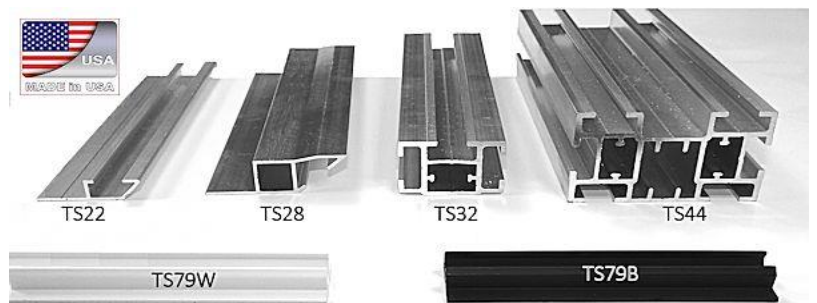


KEEP IN TOUCH...

## Welcome To Our Newsletter

### How To Professionally And Cost-Effectively Stretch Banners

Our different aluminum extrusions have different numbers of channels where the graphics can be inserted and stretched.



Let's review the possibilities we have with each extrusion.

[Top of Page](#)

### TS22 - ONE FRONT CHANNEL

The TS22 aluminum extrusion has one channel on the front. This means that the white or black PVC strip will be visible all around the frame.



TS22 Extrusion



Mukwonago School, WI.  
3' x 25' stretched graphic.

KEEP IN TOUCH...

Phone: (800) 436-8242

 [Gallery](#)

Web: [www.tensols.com](http://www.tensols.com)

 [Send us an Email](#)

[Subscribe To Our Newsletter](#)



All our aluminum and PVC extrusions are 100% recyclable.



Our entire aluminum and PVC extrusion product line is designed and manufactured in the USA.

How does it work?  
Have a look to our video...



## THE COMPANY

Tensioning Solutions mission is to propose to sign professionals a product line of aluminum extruded bars of the highest quality. Designed to Stretch Banners for many applications, and which are easy to install, versatile and very cost effective.



TS22 ceiling frame in a basket Ball court.



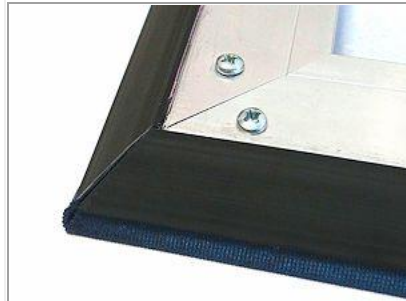
TS22 extrusion used to stretch printed graphics on Box Trucks and Trailers.

[Top of Page](#)

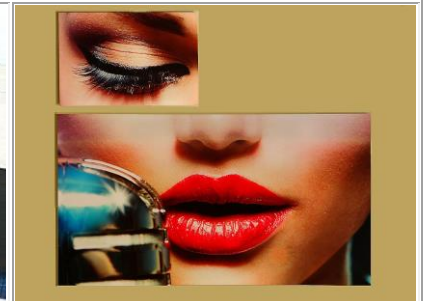
## TS28 - ONE REAR CHANNEL

The TS28 has only one channel in the rear of the extrusion.

It is designed to fabricate interior Art frame to decorate Hallways, Conference rooms, branches and also museums, exhibits, galleries...



Rear corner of a TS28 frame. Screws are optional.



Two TS28 frames decorating a hallway.

[Top of Page](#)

## TS32 - 3 CHANNELS

The graphics can be stretched with the PVC locking strip inserted to the front, the side and the rear of the extrusion

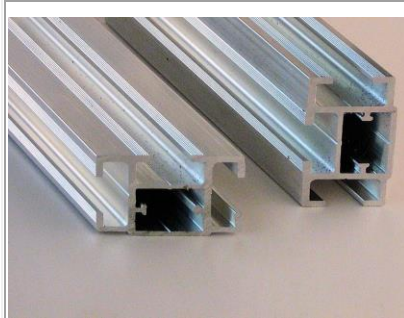
When the graphic is fixed from the rear, it wraps entirely the frame.

Designed for medium and large size framed banners and signs for:

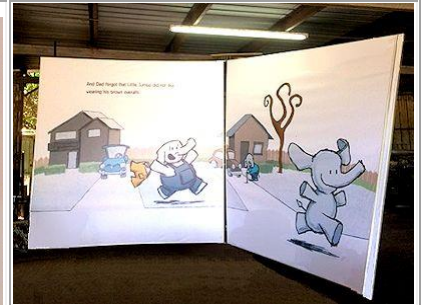
- Advertising
- Construction sites
- Architectural applications (Walls, ceiling...)
- Sports Events
- Shops, malls decorations



*Ask For A Free Quote*



TS32 Extrusion



TS32 - Guinness record of the largest mobile book



TS32- Frames on a Corner Wall. Printed graphics fixed and stretched on the side.

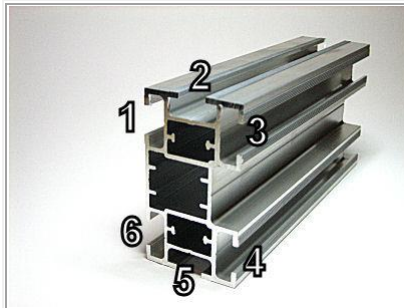


TS32- 82 inch. x 56 inch. Wrapped Frame

Top of Page

**TS44 - 6 CHANNELS**

Our sturdiest extruded aluminum bar is designed for medium, large and very large (> 5,000 Sq ft) framed stretched banners and signs. It is also used for building structures such as exhibition booths, 3D signs, etc.



TS44 Extrusion





CBU University - Two 11' by 32' stretched banners (Vinyl 13 Oz.)

TS44 Billboard

Top of Page

**TENSIONING SOLUTIONS** Tensioning Solutions Inc.  
EASY TO INSTALL FOR ANY FRAME SHAPES AND SIZES,