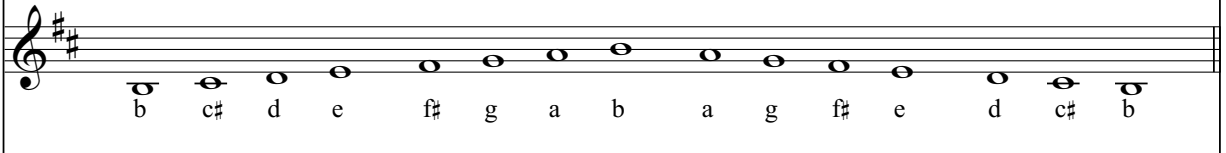


b minor

relative major: D +
key signature: f# c#

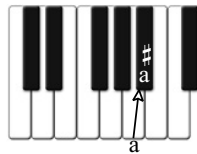
b minor natural

The natural minor simply borrows the key signature of it's relative, D major.

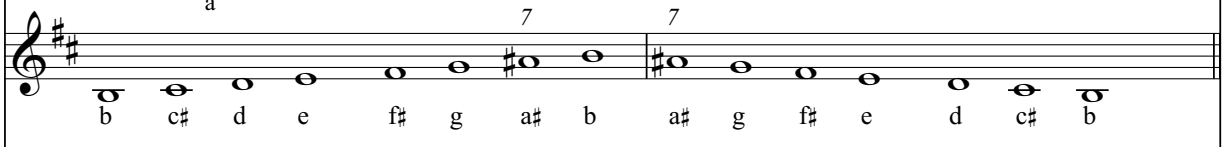


b minor harmonic

The 7th note is raised a half step ascending and descending the scale.

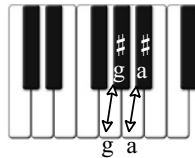


The 7th note is *a* and is raised to *a#* creating the *leading note*.

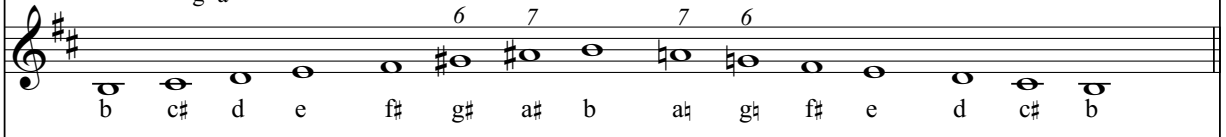


b minor melodic

The 6th and 7th notes are raised a half step ascending the scale and lowered a half step descending the scale.



Ascending the scale the 6th note is *g* and is raised to *g#*.



The following excerpt in the key of *b minor* is from CHOPIN's Mazurka Op. No.2.

Note the *a#* leading note and *g#* accidental from the *melodic* minor in the score.

F. CHOPIN
Mazurka
Op. 30, No. 2

Allegretto