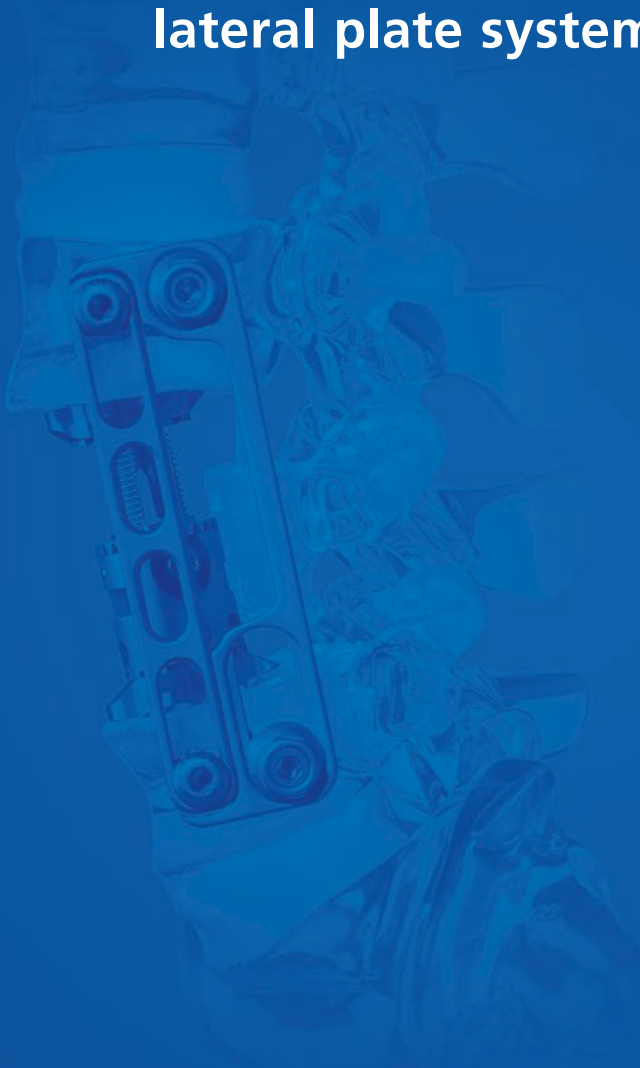


# golden gate<sup>®</sup>

## lateral plate system



**100**Years

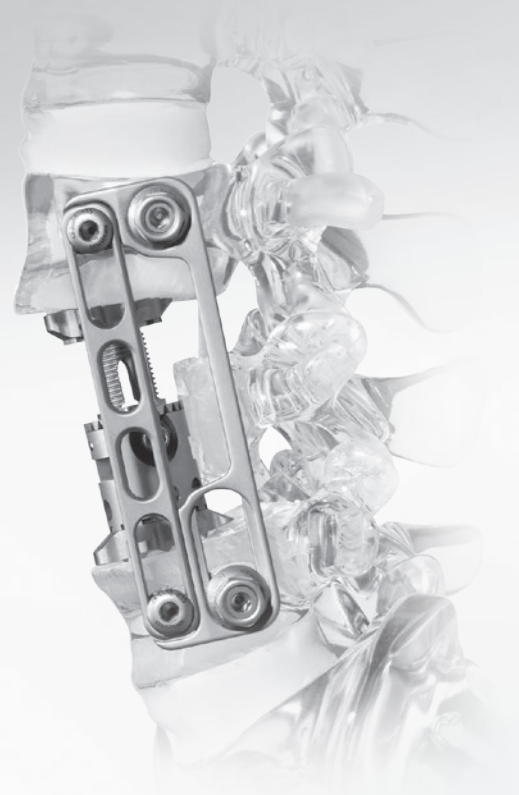
Over A Century Of Innovation



**Ulrich**  
medical USA

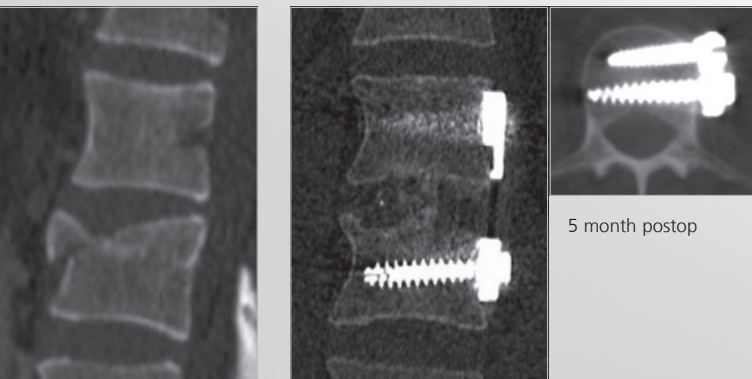
## System

- Plate system for lateral stabilization of the thoracic and lumbar spine
- Two-component plate design to allow access to intervertebral space and unobstructed field of vision
- Cannulated, conical polyaxial screws



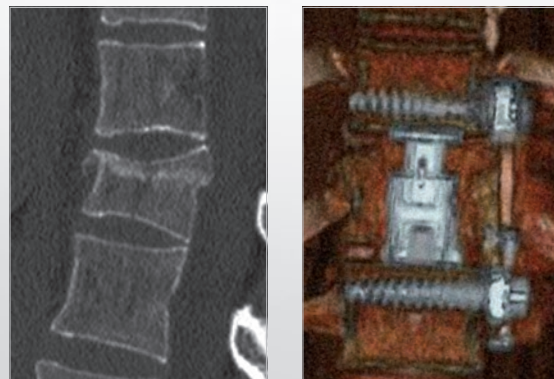
## Indications

Post-traumatic instabilities, degenerative diseases (i.e. spondylolisthesis, spondylolysis, spinal stenosis), fractures, spinal tumors.



5 month postop

Incomplete cranial burst fracture L3 (A 3.1)  
Stabilization with bone graft and *golden gate*



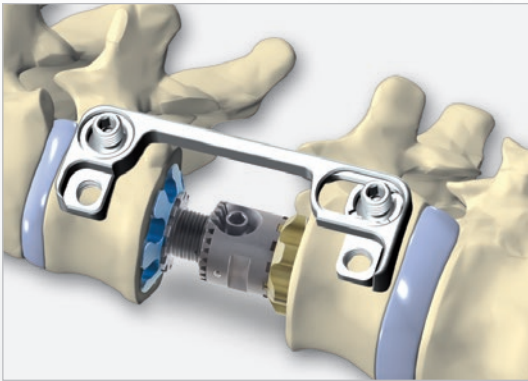
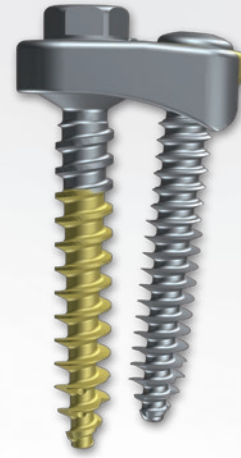
4 days postop

Incomplete cranial burst fracture T12 (A 3.1)  
Stabilization with *obelisc* vertebral body replacement device and *golden gate*

## Advantages

### Safety and stability

- Unlimited working field due to two-component plate system
- Implantation of bone graft/cage after pre-fixation of *golden gate* C-plate
- Convergent screw placement provides a secure hold
- The implant design, with rounded edges, adjusts to the anatomical structures of the spine and provides protection for soft tissues



### Simple and time saving

- Few surgical steps
- Few instruments
- Easy to use



## Components

Implants	Length	Product number
golden gate C-plate, A	45mm	CS 3601-045-A
golden gate C-plate, B (optional)	45mm	CS 3601-045-B
golden gate C-plate, A	50mm	CS 3601-050-A
golden gate C-plate, B (optional)	50mm	CS 3601-050-B
golden gate C-plate, A	55mm	CS 3601-055-A
golden gate C-plate, B (optional)	55mm	CS 3601-055-B
golden gate C-plate, A	60mm	CS 3601-060-A
golden gate C-plate, B (optional)	60mm	CS 3601-060-B
golden gate C-plate, A	70mm	CS 3601-070-A
golden gate C-plate, B (optional)	70mm	CS 3601-070-B
golden gate C-plate, A	80mm	CS 3601-080-A
golden gate C-plate, B (optional)	80mm	CS 3601-080-B
golden gate C-plate, A	90mm	CS 3601-090-A
golden gate C-plate, B (optional)	90mm	CS 3601-090-B
golden gate C-plate, A	100mm	CS 3601-100-A
golden gate C-plate, B (optional)	100mm	CS 3601-100-B
golden gate C-plate, A	110mm	CS 3601-110-A
golden gate C-plate, B (optional)	110mm	CS 3601-110-B
golden gate C-plate, A	120mm	CS 3601-120-A
golden gate C-plate, B (optional)	120mm	CS 3601-120-B
golden gate C-plate, A	130mm	CS 3601-130-A
golden gate C-plate, B (optional)	130mm	CS 3601-130-B
gate	45mm	CS 3603-045
gate	50mm	CS 3603-050
gate	55mm	CS 3603-055
gate	60mm	CS 3603-060
gate	70mm	CS 3603-070
gate	80mm	CS 3603-080
gate	90mm	CS 3603-090
gate	100mm	CS 3603-100
gate	110mm	CS 3603-110
gate	120mm	CS 3603-120
gate	130mm	CS 3603-130
golden gate screw, polyaxial	25mm	CS 3607-025
golden gate screw, polyaxial	30mm	CS 3607-030
golden gate screw, polyaxial	35mm	CS 3607-035
golden gate screw, polyaxial	40mm	CS 3607-040
golden gate screw, polyaxial	45mm	CS 3607-045
golden gate screw, polyaxial	50mm	CS 3607-050
golden gate screw, polyaxial	55mm	CS 3607-055
golden gate screw	20mm	CS 3608-020
golden gate screw	25mm	CS 3608-025
golden gate screw	30mm	CS 3608-030
golden gate screw	35mm	CS 3608-035
golden gate screw	40mm	CS 3608-040
golden gate screw	45mm	CS 3608-045
golden gate screw	50mm	CS 3608-050
golden gate inlay		CS 3609-01
golden gate hex nut		CS 3609-02

# 100 Years

Over A Century Of Innovation

**Ulrich**  
medical USA

18221 Edison Avenue, Chesterfield, MO 63005  
Phone: 866.519.0268 | Fax: 636.519.0271  
www.ulrichmedicalusa.com

CE 0123

patented  
or/and  
pat. pend.

**World Headquarters**  
**ulrich medical®**  
Buchbrunnweg 12  
89081 Ulm, Germany