



S H U N & Shame

Green-Concept

1God 1FAITH 1CHURCH Universe Custodian Guardians

Custodian Guardian 'GREEN-Concept' endeavors' to turn people from being a threat to other people & 'Planet EARTH'. Into a Custodian of 1GOD's creations! Being 'Green' starts at home includes neighbors & community. A C-G Gathering is a local activist hub.

Custodian Guardian SHUN & Shame. Community holds accountable, MS/R1-7. Government turns Green-Concept into Law.

ADDICTIONS

Addiction a repetitive compulsive behavior gratifying a perceived need. Addicts delude themselves by not accepting the harm their behavior is doing. Harm to themselves, family, friends, work-mates & community. Keep addicts away from children.

Addicts are delusional ! Addicts do not believe they are addicted as long as they are enjoying them-selves & holding their lives together. Realistically, addictions limit addicts individuality & freedoms as they become more restricted in their behavior.

1GOD is waiting to hear from YOU !  

ADDICTION – Prayer

Addiction-day 12.2.7.

Dear 1GOD, Creator of the most beautiful Universe
Your most humble faithful custodian-guardian (1st name)
Help me be not an addict
Help Humankind contain addictions
Punish addictions providers in life & Afterlife
Let this community be addiction free
For the Glory of 1GOD & the Good of Humankind



This prayer is used on Addiction-Day ! Or as needed.



Addicts with illicit addictions enjoy the secretive nature of their habit! Illicit addictions result in imprisonment & loss of self-respect. Addicts are ignorant (stupid), gullible (foolish) & weak (pathetic)!

When people are addicted, their enjoyment often becomes focused on carrying out their habit & reliving withdrawal. **Rather than the full range of experiences which form their full potential for happiness of non-addiction. A moral & civil duty, always hold addicts accountable.**

Addicted become a threat to themselves & community. They become delusional, immoral, dishonest, deceitful, selfish, uncaring & anti-social. **A moral & civil duty, always report addicts.**

Addicts need psychiatric help & help support groups. Relapse Addicts are quarantined to protect the community especially the young.

Adrenaline Addiction

Adrenaline, a hormone that acts as neurotransmitter. **A main cause of a stress reaction to a threat to the physical integrity of the body.**

Excessive participants in aerobics, car-racing, jogging, sky-diving,... Participant become addicted to the adrenaline-rush from this activity. **These Addicts become depressed when they cannot get their rush'.**



When Adrenalin is released into the bloodstream it acts to increase heart rate, blood-pressure, dilates pupils, raises blood sugar levels & diverts blood-flow from skin & inner-organs. **People who often get angry, guilty, worrisome arouse their adrenaline even though they may sit around doing nothing else. Angry, worried_ meditate.**

A need for speed is an adrenaline affliction. Any racing gives an adrenaline rush. Winning gives an even bigger rush. **The human body was not designed for speed. There is no need for speed. Winning is selfish.**

Winners rush leads to wanting more. Losing leads to anxiety. This anxiety leads to desperation. **Wanting to win at any cost (cheating, substance abuse, kill to win,...).**



Anti-social behaviour gives an adrenaline rush. The more obnoxious, outrages the bigger the rush. Ask any punk road-terrorist (burnout, cutting off, tail-gating, pushing of a road, wheelies, extra loud),

gang member (bullying, vandalism, violence), serial-killer (inflicting fear, pain, death). Anti-social behavior is a threat to the community & is prosecuted **MS/R1-7** A civil duty to report, road-rage, dangerous driving, accidents.

Dangerous activities (stunts,...) give an adrenaline rush. People who otherwise cannot get a winners rush do dangerous activities. These activities encourage copycats who get injured, killed, endangering others. Dangerous activities end, **MS/R2**. Dangerous activities people have to pay for rescue & medical expences.

Being an Adrenaline junkie is an illness. Seek help!



Alcohol Addiction



Alcohol is consumed through drink & food. Consuming Alcohol leads to behavioral changes (drunkenness'). Drunkenness (alcoholism) is the main cause of Accidents, Assaults, Rape, Vandalism. Drunks are a burden, a nuisance & threat to the community.

Alcoholism is the overpowering need to consume alcohol. Like all addicts, Alcoholics put their own selfish needs above that of others & the community. Alcoholics will beg, borrow & steal to get a drink! Alcoholics need treatment. Treatment consists of drying out! Treatment is not a cure. Alcoholics soon are back being Drunks!



The best help for Alcoholics is to stop the availability of Alcohol. Production, marketing & distribution of Alcohol must end.

ZERO TOLERANCE to ALCOHOL !!!



CHRISTIANITY is the main cause of spreading Alcoholism.

Christian Idol (false idol) Jesus (false messiah) wanted Christians to

drink Alcohol (red wine). Christians drink Alcohol at religious mess & non religious gatherings. Christian HE & SHE drink Alcohol before mating. Christian SHE continuous drinking Alcohol during pregnancy & breastfeeding. Christian parents encourage their children to drink Alcohol. Christian parents are bad parents!



A young Christian having been weaned on Alcohol sees at mess in church, Priest, Parents, friends, neighbors drink Alcohol. A young Christian sees parents drink Alcohol at home, functions & leisure time. A young Christian (HE & SHE) when socializing within their age-group faces peer-pressure to binge drink to be acceptable. Young Christian HE get young SHE drunk to mate or rape. Both become 'Trash'. Shame, Shun, Trash!

Christian-monks could not find spiritual inspiration through praying & reading the scriptures turned to Alcohol for spiritual inspiration. Not happy, monks produced their own Alcohol. Producing & drinking Alcohol kept monks in a constant state of drunken stupor. Now they had insights (la la land).



Catholic Schools are like Taverns. Principals have a bar (expensive alcohol), teachers social club has a bar. Administration has wine (cheap) for mess & fund-raising.

Every Friday & Saturday drunken Christians Bash, Rape & Kill. On Sunday they 'Confess' get 'Forgiven'. After they go to mess for a drink (alcoholic). After church they go binge-drink with friends, family. Binge-drink Christians are the main cause of 'Domestic-Violence'. 1GOD is dismayed, will not forgive & hold accountable, so does Humankind. Every drunk is held accountable.

Christianity because it encourages the consumption of Alcohol is not acceptable as a religion or cult. 1GOD does not want Humankind to destroy its health by consuming Alcohol. 1GOD is disappointed with Christian addiction to Alcohol.

Say NO to Christianity !!! Say NO to Alcohol !!!

MUST – DO :

SHE is not to mate with drunk HE. HE is not to mate with drunk SHE. SHE drinking during pregnancy is put under home arrest. SHE drinking while breast-feeding is put under home arrest. A community has a duty of care to every unborn, newborn. Alcoholic SHE is not suitable to be a parent. Foster-parents raise Alcoholic SHE's baby.

Parents with underage children (SHE 17, HE18) that drink Alcohol are unacceptable. Every community has a duty of care to every underage child. Alcoholic Parents Holy-Matrimony Contract is canceled their underage children are raised by Foster-parents.

Education-facilities are Alcohol free. Educators (Principals, Teachers, Administrators) who bring, consume Alcohol are removed & banned from Schools. Christian Education-facilities are transferred to public education (without compensation). Christian Educators (Principals, Teachers, Administrators) are removed & banned from Education. Their school-bars are demolished their Alcohol is destroyed!

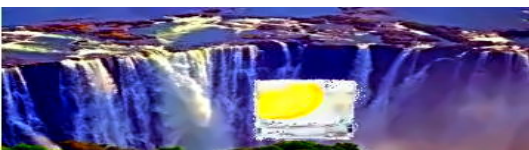
Every community (Shire) has a duty of care to its people. Alcohol a community threat needs containing & eradicating. Every Shire is to ban Alcohol & enforce the ban. Province bans the production & distribution of Alcohol. Illegal production & distribution of Alcohol is prosecuted: MS-R6 Existing production /distribution of Alcohol is stopped & closed down. No compensation is given.



Deny Christian churches, cults charity status & tax exemption.

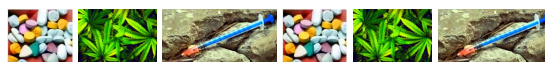
Make being drunk a Crime, MS-R2 No bail for drunks.

Any Crime committed while being drunk doubles Rehabilitation.



Filtered Water
for good Health !!!

Drugs Addiction



It is common knowledge that mind-altering substances (**drugs**) are bad for the human body. Yet 99.9 % of Drug- Junkies take drugs by choice. They are either extraordinary dumb or just anti community scum. **Don't feel pity for Drug-Junkies their problem is self inflicted. Hold them accountable.**

Cage these threats to the community, **MS/R4**. Manufacturers, Distributors & providers of mind-altering substances, illegal or legalized (Bad Law), are caged, **MS/R7**. **Bad law is reversed, backdated.**



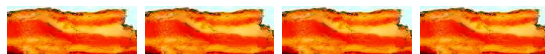
Marijuana, Codein are not medicine. They are not to be used. They are illigal drugs, **MS/R7**

Any Crime committed while being under the influence of mind altering substance(s) trebles Rehabilitation. Being under the influence of Alcohol & mind-altering substances Rehabilitation is increased by a multiplier of 5. **Note!** Past & present Drug/Alcohol-junkies can only be employed at 'wmw x2' or lower.



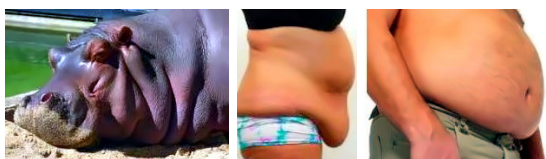
ZERO TOLERANCE to MIND-ALTERING SUBSTANCES

Eating Addiction



Eating is essential we can't live without it. Eating is a necessity, over-eating is an addiction. **Overeaters (Blubber-People)** can look forward to getting, blubbery, get more sweaty, tire more easy, trouble finding gear that fits, find chairs uncomfortable tight, trouble tying shoelaces, have clogged arteries, high-blood pressure, get diabetes, die younger, probable have obese children.

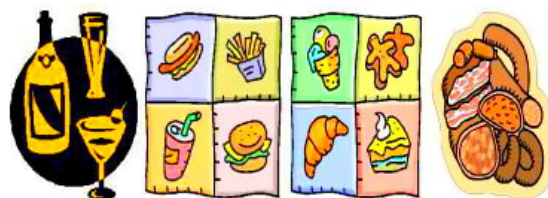
Blubber is good for hippopotamus & whales. For humans too much blubber is sickening. **Being overweight makes a person more out of**



breath, lethargic, tire easy, have more sickies, become a burden to oneself, family, friends, work-mates & community. Being over-

weight is not acceptable. Everyone is to help people loose weight.

Stop being blubbery. End having alcohol & using artificial sweeteners in food or drinks. Reduce sharply using natural sweeteners & reduce sodium intake, use only iodized salt. Stop eating manufactured food.



Banquet, Feast, Smorgasbord, long-meals type of eating are out. Over eating is out. Consuming Alcohol while eating is out. Desert's are out. Eating small portion's is in. Drinking water with meal's is in.



Adhere to the Custodian-guardian 'Daily Routine'. Reduce the amount you eat for each meal. Drink unsweetened drinks. Avoid fissy drink. Do daily day & night exercises. Observe 'Night-Curfew'. **Pray :**

1GOD is waiting to hear from YOU !  

BLUBBER – Prayer

Dear **1GOD**, Creator of the most beautiful Universe
Your most humble faithful custodian-guardian (1st name)
Thank you for supplying me with Daily drink & food
Help me not to overeat & become blubbery



I endeavor to be deserving of small portions of food every day
May I be spared agonizing health issues because of overeating
For the Glory of **1GOD** & the Good of Humankind

Blubber people use this prayer before every feed!



Gambling Addiction



Gambling uses human weakness & deceit to bring misery to indivi-

duals', families & the community. Gambling promoters prey on the desperate. Gambling involves betting (on anything), hedging (insurance, futures, options,...), lotteries (you got to be in it to win it), speculating (hoping asset values increase). Don't feel sorry for gamblers. Weak, selfish, dumb individuals believe they deserve unearned wealth. They don't. Hold them accountable.

Reality entertainment participants are the most embarrassing gamblers. They behave disgusting, betray, deceive, humiliate themselves & others, lie, gambling that they win. Winners lose their winnings to 100% tax on winnings. Unearned income is taxed away. Shun Players

Taken advantage of people's weakness is a crime, cage gambling providers, **MS/R7**. Gambling venues (Betting-shops, Future-exchanges', Casinos', Reality entertainment, Stock-exchanges) are closed. Confiscate all profit & assets of gambling provider & professional gambler (fund-manager, land-speculator, futures-trader, share-trader,). Cancel Freehold (Investment property). Individuals' that win (includes reality entertainment winners), lose to 100% tax on winnings.

Gamblers are dumb, deluded, selfish bad people. Gambling providers are deceitful parasitic predatory profiteers. Both are BAD & are accountable.

ZERO TOLERANCE to GAMBLING

Shopping Addiction



You enter a shop & you can't leave without shopping. A new product is released or 1/2 yearly 'Sale', you stand outside the store for many hours, you have to be the 1st to get the product (s). You are an addict! A shopping-junkie!



Greedy Profiteers use addicts to their advantage. Marketers' create something new (usually unneeded, junk). Then market it as something that everyone has to have.

The Advertising campaign is mainly aimed at shopping junkies. Junk Providers for Shopping-Addicts are a large source of rubbish & garbage. Advertising



of non-essentials ends. Delivery of Junk-mail to mail boxes ends, breaches: **MS/R4**. Non-essentials have an extra 50% tax (garbage) charged. Shopping junkies seek help.

Responsible shopping: No impulse shopping (make a shopping list & stick to it). Shop alone. Only purchase essentials (No junk). Don't use a credit card.

Smoking Addiction



Smoking addiction, a human misery! Smokers stink from the mouth, their clothing stinks they stink up a room. Their ashes & butts are everywhere. They are

dirty, disgusting, stinking individuals. Shun them! Shame them.

Smokers are a health-risk to themselves. They burn their lips, teeth, gums, mouth, throat, windpipe & lungs becoming sick, a burden to the community.

Smokers are lazy taking many smoke-breaks & self-inflicted sickies.



Smokers are a health-risk to others. Pregnant smokers are hurting their unborn. After birth these newborn are sentenced to a life of having health issues. They may have deformities/disabilities,..

Hurting unborn: **MS/R3** Children of smoking parents are to sue their parents for compensation.



Smokers are negligent. They start fires, homes, forest, grass. They are held accountable, **MS/R4** & pay compensation. Smokers fire, injured people &/or animals, **MS/R5** It killed people &/or animals, **MS/R6**

Passive smoke (assault) hurts people. Smokers that create passive smoke are prosecuted, **MS/R3**. Entities (work, leisure, entertainment) that allow smoking are prosecuted, **MS/R3** & have to pay compensation. Government that allow smoking are replaced, get **MS/R7**

In 1951* it was established that smoking is unhealthy a severe threat. Government & Government agencies/departments that didn't 'Ban' smoking failed to serve & protect the community. Retrospective legislation is passed & these guilty get, **MS/R7**.
*Pagan Calendar



Any individual or group, business or other entity that promotes (adv-

ertising, marketing, freebies), allows (parents, teachers, work, clubs, eateries, entertainment venue), profits (suppliers, manufacturers, transporters, wholesalers, retailers), makes available 'Smokes' &/or smoking accessories, **MS/R7**

It doesn't matter what the 'Smokes' contain.

The act of smoking is the health-risk.



ZERO TOLERANCE to SMOKING !!

New Technology Addiction

New-Technology junkies can be amusing. They camp outside a retailer waiting to buy a new over-priced gadget. [How silly!](#)

New-Technology junkies a silly mutation of 'Shopping-Addiction'. They are the greatest cause of waste. They discard goods that work & have a long use by date. They never learn to use their new-technology. Because they do not have it long enough. [These junkies turn long-term products into disposables.](#)

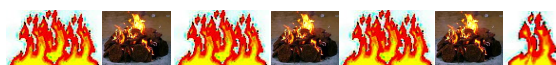
Most New-Technology is not recyclable. Creating waste disposal problems for the Shire & future generations. A microchip manufacturer brings out a new chip every 6 months to cater for NewTechnology junkies. [Perfectly functioning chips are discarded. What a waste.](#) [Environmental-vandalism. Manufacturer, distributor, MS/R7](#)

The community needs to set guidelines. C-G solution, every new product has a shelf-life of 7years. [It cannot be replaced with a new model for 7years.](#) Breach, **MS/R7**

The people/organizations that create junkies & feed addiction are despicable, immoral, criminals.
They are held accountable: MS/R7.

NOTE !! This applies to all 'Addictions'. Parents of underage(17 SHE, 18 HE) are accountable. **MS/R1**, 1st offence, 2nd offence **MS/R2**, [loose all their children. Cannot look after other underage.](#)

B U R N I N G



After humankind discovered how to use fire. It saw this as a blessing.

Wood burning was supplemented with fossil fuel burning. English



Christians introducing the industrial age started the pollution that is leading to climate change. Fire & burning are now a threat, a curse.

STOP BURNING, NOW !!!

The most dangerous part of burning is, SMOKE. In fires the greatest threat to health/mortality is smoke inhalation. On a greater scale Smoke rising up into the atmosphere Stops heat escaping into Space. Surface water warms, surface land warms, ice melts: CLIMATE CHANGE !



To survive the human-body needs **Breathable Air**. Humans burning things is the main threat to 'Breathable air.

Non-breathable Air You have 4 minutes to live!

ZERO TOLERANCE TO AIR POLLUTERS !!!!!!!

Energy

Too much leisure-time, too large homes, too large incomes, too many un-needed gadgets, has created a spike in ever increasing energy needs. Current Energy is polluting, has high establishing costs, high running & maintenance costs. Polluting Energy relies on burning. Burning is replaced with non-burning.

Domestic & non-domestic burning of dung, wood, coal, gas & oil for cooking, heating & power, **ENDS!** Power-Stations that burn (coal, oil, gas, uranium) to create energy are **SHUT-Down** & dismantled. Energy is produced by non-burning. Polluting Owners & operators are prosecuted, **MS/R7**. Uranium & Coal mines are closed & sealed. It's Owners/Operators are caged, **MS/R7**

Burning coal produces great amounts of air polluting smoke (**Carbon dioxide**). Carbon dioxide drifts up 50% is washed down by rain the rest drifts into the atmosphere where it accumulates. Carbon dioxide lets through sunlight to heat the Earth but prevents some of the heat from being radiated back into space (**Global-warming**). Result Earth's surface is slowly heating up. This heating of the surface temperature has increased dramatically since year '0' (2004). This warming decreases the size of glaciers & polar ice-caps. Resulting in rising sea

levels & climate change. *Custodian-Guardian New-Age time-management



Coal is transported by open (uncovered) rolling-stock. Coal-dust is blown onto: animals & people (eye infections, respiratory problems, rashes,...), laundry (hung out to dry needs rewashing to avoid rashes), soil (crop, garden, orchard, vegetation),

water (tank, creek, lake, river, sea) is polluted needs filtering. It Ends.

Coal produces dirty energy. Coal is choking us. Clean Coal is a Fraud!

STOP the lorries, close the Mines:
SURVIVE !!!



Burning is replaced with, 'Solar, Water, Wind' !!!!!!!



Burning to move domestic & non-domestic transport Ends! Gas & Oil have non-burning use. Domestic & non-domestic transport on Freeways is replaced with 'Freeway-Trams'(see Shire)! Long-distance overland transport is by Rail only. Individual polluting transport is phased out. Cancel new Freeways.

An increasing population needs better energy planning. Reducing energy usage per person is a must. Night-Curfew is a must. Reducing energy for leisuretime activities is essential. Cluster-homes replace 2 storey mansion's, double garage, vanity gardens, swimming-pool,...

Night-Curfew

The human body was not designed to be nocturnal. Humans misused their brain-power to create a nocturnal lifestyle. This lifestyle wastes a lot of energy, increases crime, is unhealthy, increases energy usage..



A 7 hour Night-curfew from 14-21 hours (C-G Klock) is mandatory. During Night-Curfew 'NO' road transport (commercial, private, public,...) is allowed to move on roads except emergency vehicles!

No street lights, traffic lights, advertising...are on. No businesses are open. No air transport is operating Airports are closed! Air transport must land at the nearest available landing field! No rail movement! Railway stations & terminals are closed! Trains stay stationary in the station during Curfew !

Nobody works (**everything is closed**) except minimum emergency personal. No energy is to be used except for emergency or heating! 1 public news radio station is transmitting. All other entertainment is switched off! No office, no manufacturing or retailer is to operate or use energy! Homes can use heating in extreme cold. The Shire enforces Night-Curfew.

Leisuretime



Burning smoking BBQ's, 'End! Out door heating, 'End's'! Cold outside wear warmer cloth. Or go inside. Using outdoor heating is, Environmental Vandalism, **MS/R7**.



Home don't use petrol-burning Garden/Power tools! Encourage family, friends, neighbors, workmates, to not use petrol-burning Garden/Power tools! Stop (**non-violent**)! Community from producing, selling, buying, petrol-burning Garden/Power tools! It is your moral & civil duty.to end polluting in your neighborhood/community! Hold family, friends, neighbors, workmates, community accountable for polluting!

Polluting Entertainment Ends. In the Air: Air-Shows, private owned air transport (**plane, jet, helicopter, drone, space-shuttle...**). In/under the water: motorized boat racing, private-owned sea transport (**cabin**



cruiser, cruise-ships, hovercraft, jet skis, speed-boats, yachts,...). On land: all 2,3 & 4 wheel motorized (**burning fuel**), cycles, bikes, SUV, buggies, sport-cars, limousines, luxury cars. Car-racing, car-stunts.





Fireworks are a major polluter. They become more common bigger more polluting. Depending on weather condition air pollution may linger for day's. Particle pollution settles on water polluting it making it unfit to Drink. Fireworks End! Laser-lights replace them.

Water

60+% of our body consists of water. Every cell in our body needs it. Water lubricates our joints, regulates our body-temperature & flushes our waste...

Condensed atmospheric water vapor forms droplets. Earth's gravity pulls the droplets down (falling rain) to the surface. Rain is a major source of fresh water. This rain water is used for drinking, preparing food, cooking, washing, personal hygiene,...



A person used to be able to drink rain-water, use it for food preparation. This is not advisable, rainwater is polluted, unhealthy, toxic, acidic, bad tasting, bad-smelling. Laundry should not be left out in the rain to become polluted. Not only does it look dirty & is bad-smelling but it may irritate the skin.

Cold rain falls as hail or snow. Snow accumulates on high mountains,



arctic & antarctic creating fresh-water reserves. Snow is white, polluted snow is gray even black. Black snow is found in the Himalayas, glaciers around the globe, Greenland & Antarctica.

Communities create fresh-water reservoirs. These reservoirs rely on rain-water & melting snow to fill them. Because of pollution these waters need treatment before human consumption.

Reservoir should be deep rather than shallow. Deep water is cooler, reducing evaporation, algae growth especially the poisonous type & insect infestation. Water-sports are prohibited to stop urinating,

menstruating & pooing into water. Water craft (jet-ski, motorboats ..) pollute (oil, gasoline, battery-acid, ...) they are banned! Exception: Park-Ranger transport.



A person cannot rely on the community doing it right. No treatment, partial treatment, wrong treatment, cost-cutting, corruption, criminal behavior,.. Home treatment of water is becoming mandatory.

Home treatment of water requires filtration. Filtration is to reduce: arsenic, asbestos, chlorine, chloroform, carbonate hardness, copper, dirt, herbicides, heavy metals, lead, pesticides, rust,... Also in warmer climates filtered water needs to be boiled to protect against deadly (micro-organism) disease.

Threats to fresh-water Soon the demand for fresh-water will exceed the availability of fresh-water.

Irrigation! Using groundwater for irrigation depletes underground reservoir of water faster than it can replenish. Resulting in drying up a whole Ecosystem, creating a shortage of fresh-water. Groundwater irrigation ends. Anyone illegal using groundwater for irrigation is prosecuted, **MS/R7**. Government allowing Groundwater irrigation, is replaced, prosecuted, **MS/R7**.

Irrigation, using Freshwater from rivers, lakes, creek,... slows the flow of water. This encourages evaporation. Resulting in drought! This type of irrigation resulted in ending civilizations. End irrigation.

Polluted waterway's (creek, stream, river, pond, lake,...) create a shortage of fresh-water. Storm-water filled with toxin, poisons, pharmaceuticals,.. Illegal dumping of industrial waste, toxin, poisons,.. Polluting of waterways ends, polluters are prosecuted, individuals **MS/R3** all others, **MS/R7**.

Supplement fresh-water

Desalination uses a lot of energy, costly. Intake of water has adverse

environmental impact, pulling large numbers of fish, shellfish, their eggs,... into the system. Larger sea creatures are trapped against screens at the front of an intake structure. Chemical treatment, corrosion, create a warm brine which is released back into the ocean.



Desalination has a high boron content making for inferior water quality. This water used in farming, ranching & food production results in a high boron level diet. Prolonged consuming of high boron levels is unhealthy.

Recycled waste-water, sewage passes through primary treatment to take out solids, nutrients are removed, filters remove most bacteria & viruses. Water is then forced through a membrane to remove molecules. Toilet to tap is an option of last resort. Tests don't reveal all health-risks.



Bottled water (costly) is suitable for travel. Plastic water bottles release chemicals which become dangerous when warming up (sun, heater). Glass (no lead) bottles are recommended.

Flavored drinking-water

For variety drinking-water may be flavored. Some flavoring is unhealthy & is to be avoided. Flavored water may be served cold or hot.

Suitable flavored drinks: Beef extract, Chicken extract, Cocoa, Coffee, Fruit, Herbs, Spices, Tea, Vegetable.



Unhealthy flavored drinks & add-ons: Alcohol, Artificial color, Artificial flavoring, Artificial & natural sweetener, Carbonated, Cola, Cordial, Energy drink, Lemonade, Decaffeinated coffee, Fruit-juice, Preservatives, Sodium,..



Drinking water is best



Daily-routine: Get up, have a 0.2l glass of lightly chilled, filtered water. Before every meal (**Breakfast, Early Day-snack, Lunch, Late Day-snack, Dinner**) have a 0.2l glass of lightly chilled, filtered water.

Have Drinking-glass (**no plastic**) filled with 0.2l of filtered water on each Bedside-table. Drink during night every time after you visited a toilet & when having a dry throat, drink rest in the morning.



Any Person, Organization/Government that denies drinkable water or is cause & effect of polluted water. **Are held accountable, caged, MS/R7**

No-liquid intake You have 4 days to live

Product development

When people create, their creations are to have a beginning, an end & be re-cyclable. E.g. Household product manufactured (**beginning**), use by date (**end**), biodegradable (**recycled**). **Everything made is to be recyclable!**

Products from the concept-stage are to be healthy, safe, non-polluting biodegradable &/or otherwise recyclable. **Everything produced & used is biodegradable &/or otherwise recyclable.**

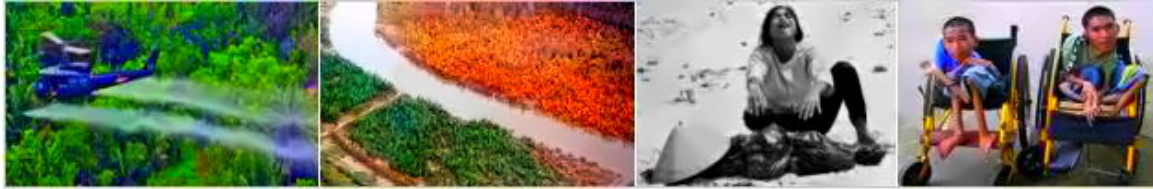
Stop, using anything that is unhealthy, unsafe, pollutes, is not biodegradable or otherwise recyclable! **Producing /Manufacturing unhealthy, unsafe, polluting goods is a crime, MS/R7**

GM-Crop (**Monster seed**) > GM-Food (**Unhealthy Food**)

Genetic modified (**engineered**) Crops are based on Seeds altered by humans of **1GOD's** original design. For the purpose of Greed, Profit-eering & insulting **1GOD**. **1GOD** doesn't want Human Genetic reengineering. Evolution is to evolve, mutate,...

Background: During the US invasion of South-East Asia. The US Military ordered the develop & usage of Herbicides (**Agent-Orange**), a

weapon of 'Mass Destruction' of Vegetation & Eco-system. Removing foliage made it easier from the air to gun down fleeing children, women & livestock (increase killrate). The poisoned ecosystem led to mutations. Result birth-defects sick people & animals,...



Herbicides are dangerous, polluting soil & waterways. Producers of Herbicides are prosecuted, **MS/R7**. Government that allow this pollution is replaced, **MS/R7**. Food polluted with Herbicides are unfit for consumption (Animal, human).

The Herbicide-manufacturers (Greedy-parasitic profiteers) expanded from Plantkillers into Seed-poisoners. A normal seed is modified using techniques learned creating 'Herbicides'. These modifications create unnatural mutations '**Monster-Seeds**'. Modifications make seeds impotent to re-sowing from crop, forcing to always buy seeds each season (Evil immoral Greed).

Evolution notices the modified Seed & responds by modifying everything that the seed comes in contact with, ecosystem & food-chain. Crops from GM seeds end up going straight (bread) to human consumption or via animal feed (fish, meat, poultry). Creatures (Birds, Sea-creatures, Mammals) fed GM-Crops direct (chicken, pig,...) or indirect (Rodent eats seed/feed, Rodent eaten by Predator, Predator killed by Hunter becomes Gourmet-dinner,...).

Food creatures eat influences their digestion. To digest Modified plants a creatures digestive system must modify (genetic re-engineer) itself via Evolution. This unnatural (Anti-GOD) type Evolution creates unnatural new types of Mutations.

Genetic Modification (GM) is Anti-**1GOD**, a threat to humankind, all other creatures & the environment. GM-Crop because of the flow-on effect alters the whole Food-chain. Creating mutations which create new Diseases & Life-threatening Global-Plagues in all members of the Food-chain! People will become more sick, Die younger, more sick babies, more miscarriages...

GM-Food (Unhealthy Food): Alfalfa, Baby-food, Bacon, Bread, Breakfast-Cereal, Canola, Chicory, Corn, Cotton-seed oil, Eggs, Ham,



Margarine, Meat, Papaya, Peas, Potato, Poultry, Sausages, Soybean, Sugar-beet, Sugarcane, Sweet-Peppers, Tomatoes, Wheat, Zucchini,...
Say '**NO**' to **GM-Food**!

Must do! Cure to this threat to Humankind & the Eco-System is Prevention & Treatment.

PREVENTION! Stop: GM-Research, GM Seed-manufacture & GM-Crop growing.

TREATMENT! Government prosecutes: GM-Scientist, manufacturing Executives, Directors, Owners & Crop-Growers for "Crime against Humankind & against the Eco-system". **MS/R7**

Government eliminates Threat by scorching GM Research & Seed manufacturing facilities. GM Crops are burned. Contaminated Soil where GM-Crops were grown is scorched 3 years running. Government that doesn't implement this 'Treatment' is replaced.



NO GM > NO GM-Seed > NO GM-Crop > NO GM-Food

Home don't eat GM-Food! Encourage family, friends, neighbors, workmates, to not eat Gm-Food! Stop (**non-violent**)! Community from producing, selling, buying, GM-Food! It is your moral & civil duty to end GM (seed, crop, food)!

Pest Control

Inside Insecticides (**chemical**) that are used, attack the nervous system. They make unborn & newborn hyperactive. Insecticides irritate Human & pet respiratory systems. Do not use Insecticides inside. Keep inside clean & tidy.

Outside Insecticides (**chemical**) are used on crops, orchards & food. Crops, orchards & food that have been contaminated are unfit for human or animal consumption. They are burned by the community



(**Shire**). Insecticides seep into the water system ending up in Oceans. Polluting the Ocean Eco-system, polluting seafood.

Fracking

Fracking is a great threat to the environment, community, humans,... Fracking is the process of drilling & injecting fluid at high pressure into shale rock fracturing it releasing gases. The high pressure triggers 'Earthquakes'.

Each process needs millions of liter of water. The Water has toxic chemicals & sand added. During the process methane gas (increases Global warming) & toxic chemicals pollute nearby groundwater. Drinking this water has resulted in cases of neurological, sensory & respiratory damage to humans & animals.

Waste fluid is left in above ground puddles to evaporate. Releasing volatile organic compounds into the atmosphere, contaminating air, creating ground level ozone & acid rain. This results in unhealthy livestock, crops, fruit & shriveling inedible pasture, ... Residents complain of fatigue, nausea, headaches & worse.

Sometimes explosives are used which trigger Earthquakes. The use near faultlines may trigger a major Earthquake. These explosions damage underground-reservoirs. They release gases that may start 'Wildfire's'!

Fracking is an Ecological Disaster. Fracking Ends!

Owners & operators are prosecuted, MS/R7. Government that allow Fracking is replaced & its members held accountable, MS/R7.

Garbage

The creation of Garbage is reduced!
Biodegradable or reusable packaging is used.
Making DISPOSABLE products* ENDS!
Printed Junk-mail* ENDS!



The making of unnecessary JUNK (collectibles, gadgets, designer-gear, ...)* ENDS! *These providers are prosecuted, MS/R7

It is your moral & civil duty.to end dumping of illigal Rubbish/Garbish in your neighborhood/community! Hold family, friends, neighbors, workmates, businesses, community, accountable for polluting! Communities are out of room to dump garbage. **We must reduce Garbage NOW!**

Shopping Malls

In a Shopping-Complex having 7 Retail outlets selling the same goods operated by 7 different Profiteering Entities is a waste of energy, capital, floor-space. The 7 Retail outlets are replaced with 1 **CROn** retail outlet. The Shopping Complex is replaced by the '**CRBC (CROn Retail & Bazaar Complex)**'! Parasitic Predatory Profiteering Entities (Shopping-Complex & Retailers) are closed down, owners & opera-



tors are prosecuted, **MS/R6**. CROn-Retail replaces all Fastfood Clones with a Healthy (non-alcoholic) Beverage-Bar. **CRBC** are part of a Shire Oasis.

Nail salon create toxic fumes. They are a health-risk an air polluter. Employees were breathing protection. Ignorant customers (victims) don't. These Shops are wide open, spreading toxic-fumes inhaled by passers by. This health-risk is most threatening to pregnant women, newborn & elderly. If you have been exposed to toxic-fumes sue the salon & the Shopping-Center for compensation. Shut them down & ban them. Prosecute owners & executives, **MS/R7** The same applies to Hairdresser & Beauty Salons. **Note!** This doesn't apply to Haircutters only.

Town planning

The purpose of Shire-Planning is to utilize land to most benefit Community & Habitat. It is essential that Community & Habitat needs Harmonize. All fertile-land has to be utilized for growing food &/or ranching, ensuring sanctuaries are provided for native-vegetation & native-creatures. Non-fertile land is to be used for domestic & non-domestic building. Existing buildings on fertile-land are demolished & recycled on non-fertile-land. Mansions with vanity gardens, apartments, holiday-homes, penthouses, retirement-villages are replaced with Shire cluster-homes on Non-fertile land.

Cities with 1million+ residents & Freeways have 2 major problems: pollution & rush-hour congestion. Both problems need now not later

pollution & rush-hour congestion. Both problems need now solutions. Custodian Guardians have a solution. Freeway Trams! Rail replacing individual-transport & long-haul Big-rig haulage.



During a draught in Australia hundreds of sheep cried as they agonizing slowly died of thirst. Nearby golfcourses watered their putting green. Golfers drank chilled water mostly mixed with alcohol. This is disgusting! **1GOD** is angry. Golf a silly useless elitist entertain-ment. It ends! Golfcourses are recycled for food growing. Golfers are useless members of the community. C-G SHAME & SHUN them.

Drinking water shortage & draughts make it unacceptable to operate private, comercial & tourist swimming pools. All pools are filled with soil. Owners are not compensated. C-G SHAME & SHUN them.

Celebrity-sport needs purpose build facilities (**Hall, Stadium,...**), infrastructure (**Rail, Roads,...**). This wastes community resources & creates long-term (**Shire**) debt. Facilities are an Energy waster create a lot of garbage. Stop building these facilities & demolish existing.

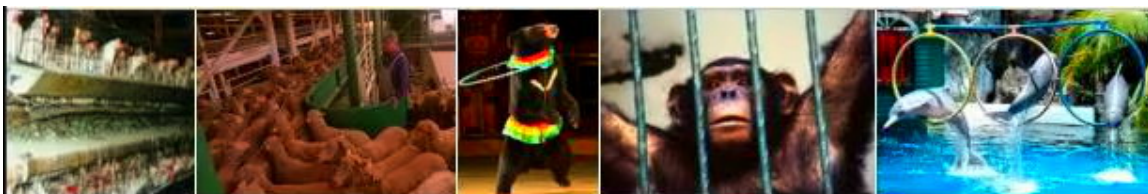


These events supply entertainment, Alcohol, Cola, other sweet drinks, Gambling, unhealthy-food (**greasy, fatty, salty**) often accompanied by violence (**assault, rage, throwing objects, vandalism**). Event's create a lot of garbage (**bottles, food, paper, plastic, cans**) needing storing (**landfil**). Gambling leads to crime: Cheating (**nobling, rigging of result,...**), intimidation, blackmail, violence.

Animal Exploitation

Animal cruelty Ends. Battery housing is demolished & replaced with 'Free-range'. Battery housing operators are prosecuted, **MS/R4**.

Life Animal transport further than 30 km ends. Breach by primary-producer, Agent & transport operator are prosecuted, **MS/R4**.



Circus animal entertainment Ends. Animal trainer & Circus operator are prosecuted, **MS/R4**.

Theme-park animal entertainment Ends. Animal trainer & Theme-park operator are prosecuted, **MS/R4**.

Zoos are closed & replaced by Wildlife Sanctuaries which house only local specie. Illegal Zoo is closed, operator is prosecuted, **MS/R4**.

Animal fights End. Animal owner, trainer & promoter are caged, **MS/R4**. Any person(s) providing gambling get, **MS/R6**

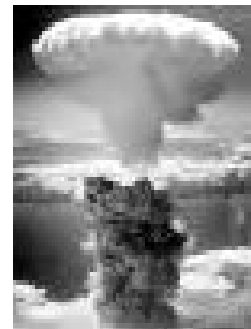


Racing animals Ends. Racing venue are closed & demolished. Racing animal owner, trainer & racing venue operator are prosecuted, **MS/R4**. Racing venue's are demolished.

Thrill-killing (Safari hunts, Royal-hunts, other hunts) of Animals Ends. Promoter & Hunters are prosecuted, **MS/R4**. Only Rangers can cull animals.

Military

Military pollute with transport & explosives, A/N (Atomic/nuclear), B (biological), C (chemical) weapons. They are a threat to human, animal & plant-life. Scientists that create these weapons are prosecuted, **MS/R7**. Production facilities & stockpiles of these weapons are demolished, & burned by the SHIRE. Government that allow the production &/or storage of these weapons are replaced & get, **MS/ R7**



S U R V I V A L – Prayer

Survival-Day 11.1.7.

Dear **1GOD**, Creator of the most beautiful Universe
Your most humble faithful custodian-guardian(1st name)
Thanks' you for the Survival of Humankind
I endeavour to help my body, specie & community survive
I shall make survival my no.1 priority
Please support my efforts to survive



For the Glory of **1GOD** & the Good of Humankind

This prayer is used on Survival day (C-G Kalender) !



Fun-Day themes* that are important to environmentalist:

Pollution Day 4.2.7 Defoliant Day 6.2.7 Holocaust Day 8.2.7

Habitat Day 9.1.7 Survival Day 11.1.7 Pet Day 11.3.7

Good-health Day 12.1.7 Addictions Day 12.2.7 Shrub Day 13.1.7

Tree Day 13.3.7 Fun-Day themes cater for a community need to celebrate be shamed & remember. *New-Age time-management

Burning, garbage, polluting, environmental-vandalism are not only a threat to this generation, next generation but coming generations. Children are to report parents that burn, dump garbage, create too much garbage, pollute air, soil, water, are environmental-vandals, destroying their Childrens future. Parents hold accountable, remove & **MS/R7** politicians that allow or are responsible of: Burning, garbage, polluting, environmental-vandalism!

Non-breathable Air You have 4 minutes to live

No-liquid intake. You have 4 days to live!

Custodian-Guardian live in harmony with 1 GOD's crations!

Many Environmentalist have pet causes. They spend passion, time & money. All very nice, makes a person feel good. The narrow confines of most causes. Results in no headway in major human survival causes: Pollution (air, soil, water), Violence (home, community, global), Wealth-Apartheid (parasitic, predatory, profiteering; estate passing on position, power, wealth). Only an organization with moral strength, endless perseverance & **1GOD** given solutions can assure human survival.

Join Us! > Be Green! > Be a Custodian!





Custodian Guardian also adhere to Chain of Evil, No Violence-Concept, ECONOMIC-Concept, 7Scrolls, N-At-m.

1GOD's latest message, Law-Giver Manifest 14.05.17 www.universecustodianguardians.org