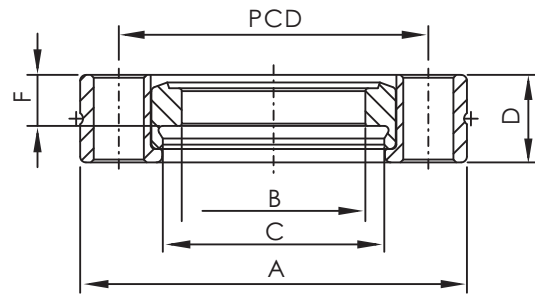


# CF Flanges



## CF BORED FLANGES, ROTABLE

\*Material: SS 304L

\*Tapped and Through Holes

CF

Part Number	Size	A (mm)	B (mm)	C (mm)	D (mm)	F (mm)	PCD (mm)	Bolt Holes	Diameter (mm) / Thread Type
CF-BF-133x050R	CF1.33"(DN16)	33.70	12.83	12.83	7.60	-	26.97	6	4.37
CF-BF-133x050RT	CF1.33"(DN16)	33.70	12.83	12.83	7.60	-	26.97	6	8-32
CF-BF-133x050RM	CF1.33"(DN16)	33.70	12.83	12.83	7.60	-	26.97	6	M4
CF-BF-133x075R	CF1.33"(DN16)	33.70	16.00	19.30	7.60	4.44	26.97	6	4.37
CF-BF-133x075RT	CF1.33"(DN16)	33.70	16.00	19.30	7.60	4.44	26.97	6	8-32
CF-BF-133x075RM	CF1.33"(DN16)	33.70	16.00	19.30	7.60	4.44	26.97	6	M4
CF-BF-212x100R	CF2.12"(DN25)	53.80	23.90	25.91	11.90	4.32	41.28	4	6.73
CF-BF-212x100RT	CF2.12"(DN25)	53.80	23.90	25.91	11.90	4.32	41.28	4	1/4-28
CF-BF-212x100RM	CF2.12"(DN25)	53.80	23.90	25.91	11.90	4.32	41.28	4	M6
CF-BF-275x075R	CF2.75"(DN40)	69.30	16.00	19.30	12.70	5.31	58.72	6	6.73
CF-BF-275x075RT	CF2.75"(DN40)	69.30	16.00	19.30	12.70	5.31	58.72	6	1/4-28
CF-BF-275x075RM	CF2.75"(DN40)	69.30	16.00	19.30	12.70	5.31	58.72	6	M6
CF-BF-275x150R	CF2.75"(DN40)	69.30	36.60	38.61	12.70	5.31	58.72	6	6.73
CF-BF-275x150RT	CF2.75"(DN40)	69.30	36.60	38.61	12.70	5.31	58.72	6	1/4-28
CF-BF-275x150RM	CF2.75"(DN40)	69.30	36.60	38.61	12.70	5.31	58.72	6	M6
CF-BF-338x200R	CF3.38"(DN50)	85.30	49.30	51.31	17.40	5.71	72.39	8	8.43
CF-BF-338x200RT	CF3.38"(DN50)	85.30	49.30	51.31	17.40	5.71	72.39	8	5/16-24
CF-BF-338x200RM	CF3.38"(DN50)	85.30	49.30	51.31	17.40	5.71	72.39	8	M8
CF-BF-450x250R	CF4.50"(DN63)	113.50	62.00	64.01	19.10	9.52	92.15	8	8.43
CF-BF-450x250RT	CF4.50"(DN63)	113.50	62.00	64.01	19.10	9.52	92.15	8	5/16-24
CF-BF-450x250RM	CF4.50"(DN63)	113.50	62.00	64.01	19.10	9.52	92.15	8	M8
CF-BF-462x300R	CF4.62"(DN80)	117.00	74.70	76.71	20.60	9.52	102.36	10	8.43
CF-BF-462x300RT	CF4.62"(DN80)	117.00	74.70	76.71	20.60	9.52	102.36	10	5/16-24
CF-BF-462x300RM	CF4.62"(DN80)	117.00	74.70	76.71	20.60	9.52	102.36	10	M8
CF-BF-600x400R	CF6.00"(DN100)	151.60	99.60	102.11	21.30	11.10	130.25	16	8.43
CF-BF-600x400RT	CF6.00"(DN100)	151.60	99.60	102.11	21.30	11.10	130.25	16	5/16-24
CF-BF-600x400RM	CF6.00"(DN100)	151.60	99.60	102.11	21.30	11.10	130.25	16	M8
CF-BF-675x500R	CF6.75"(DN130)	170.69	125.00	127.51	21.30	11.68	151.61	18	8.43
CF-BF-675x500RT	CF6.75"(DN130)	170.69	125.00	127.51	21.30	11.68	151.61	18	5/16-24
CF-BF-675x500RM	CF6.75"(DN130)	170.69	125.00	127.51	21.30	11.68	151.61	18	M8
CF-BF-800x600R	CF8.00"(DN160)	202.44	150.40	152.91	23.90	12.70	181.05	20	8.43
CF-BF-800x600RT	CF8.00"(DN160)	202.44	150.40	152.91	23.90	12.70	181.05	20	5/16-24
CF-BF-800x600RM	CF8.00"(DN160)	202.44	150.40	152.91	23.90	12.70	181.05	20	M8
CF-BF-1000x800R	CF10.00"(DN200)	253.24	200.40	203.71	24.60	12.70	231.85	24	8.43
CF-BF-1000x800RT	CF10.00"(DN200)	253.24	200.40	203.71	24.60	12.70	231.85	24	5/16-24
CF-BF-1000x800RM	CF10.00"(DN200)	253.24	200.40	203.71	24.60	12.70	231.85	24	M8
CF-BF-1200x1000R	CF12.00"(DN250)	304.04	250.95	254.51	25.90	12.70	283.97	32	8.43
CF-BF-1200x1000RT	CF12.00"(DN250)	304.04	250.95	254.51	25.90	12.70	283.97	32	5/16-24
CF-BF-1200x1000RM	CF12.00"(DN250)	304.04	250.95	254.51	25.90	12.70	283.97	32	M8
CF-BF-1325x1000R	CF13.25"(DN270)	335.79	250.95	254.51	28.45	12.70	306.32	30	10.49
CF-BF-1325x1000RT	CF13.25"(DN270)	335.79	250.95	254.51	28.45	12.70	306.32	30	3/8-24
CF-BF-1325x1000RM	CF13.25"(DN270)	335.79	250.95	254.51	28.45	12.70	306.32	30	M10
CF-BF-1400x1200R	CF14.00"(DN300)	354.84	301.75	305.31	28.45	12.70	325.37	30	10.49
CF-BF-1400x1200RT	CF14.00"(DN300)	354.84	301.75	305.31	28.45	12.70	325.37	30	3/8-24
CF-BF-1400x1200RM	CF14.00"(DN300)	354.84	301.75	305.31	28.45	12.70	325.37	30	M10
CF-BF-1650x1400R	CF16.50"(DN350)	418.34	352.55	356.11	28.45	12.70	388.87	36	10.49
CF-BF-1650x1400RT	CF16.50"(DN350)	418.34	352.55	356.11	28.45	12.70	388.87	36	3/8-24
CF-BF-1650x1400RM	CF16.50"(DN350)	418.34	352.55	356.11	28.45	12.70	388.87	36	M10

\*Note: SS 316LN Material Available on Request.