

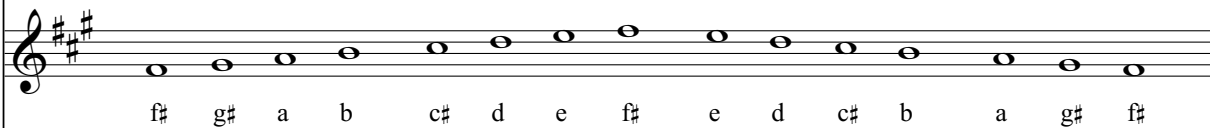
F# minor

relative major: A +

key signature: f# c# g#

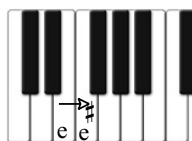
F# minor natural

The natural minor simply borrows the key signature of it's relative, A major.



F# minor harmonic

The 7th note is raised a half step ascending and descending the scale.



The 7th note is *e* and is raised to *e#* creating the *leading note*.

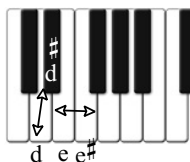


F# minor melodic

The 6th and 7th notes are raised a half step ascending the scale

and lowered a half step descending the scale.

Ascending the scale the 6th note is *d* and is raised to *d#*.



? HAYDN: Symphony No. 45 "Farewell"; MAHLER: Symphony No. 10 (1911)

The following excerpt is in the key of F# minor.

Note the *e#* leading note and *d#* accidental from the *melodic* minor in the score.

Allegretto

