



Consistent depth control is the most important job of your planter. Even the best maintained planter can still have a depth variation of 1/2" or more.

Keeton® Seed Firmers gently set seeds to the bottom of the trench. A thin piece of poly slides down the seed trench, trapping seeds as they exit the seed tube and firming them into the bottom of the "V".



PLANTER MOUNTED

GRAIN DRILL MOUNTED

PART #	MOUNTING / TAIL TYPE	PRICE
125012	UNIVERSAL DRY	\$34.00 "SALE"
125013	KINZE DRY	\$34.00 "SALE"
115011	UNIVERSAL DUAL TUBE	\$34.00 "SALE"
115012	KINZE DUAL TUBE	\$34.00 "SALE"
126008	UNIVERSAL LOW PRO	\$34.00 "SALE"
126009	KINZE LOW PRO	\$34.00 "SALE"
126010/115013/125011	REPLACEMENT TAIL	\$29.00 "SALE"

PART #	APPLICATION	PRICE
120103	GP 1500	\$29.50 "SALE"
120121	CIH 5400	\$29.50 "SALE"
120133	JD 750/1850	\$35.50 "SALE"
120134	JD 1560-90	\$35.50 "SALE"

SEED TUBE MOUNTED



PART #	APPLICATION	PRICE
100101	DRY TAIL	\$31.50 "SALE"
100104	LIQUID TAIL	\$32.50 "SALE"

"MOJO" WIRES FOR KEETON FIRMERS



PART #	APPLICATION	PRICE
K100	FITS ORIGINAL P100 SEED TUBE MOUNT TAILS	\$24.50 "SALE"
K200	FITS EARLY DRY AND DUAL TAIL (NON WAVE VISION)	\$22.50 "SALE"
K211	FITS LATE DRY AND DUAL TAIL (WAVE VISION STYLE)	\$22.50 "SALE"



Poor meter performance = lost yield

You should be getting 98% or better accuracy from your meters, but typical meters run at only 92%-97%. When each additional percentage point is worth another bushel or two for every acre, there's plenty of room for improvement.

What's the accuracy on *your* meters?



Let us put one of your meters on the MeterMax® Ultra test stand where we can show the yield robbing issues you may face. Then, if your meters are off, you can regain lost yield with a complete calibration. Here's how it works.

The meter is mounted on the MeterMax Ultra test stand, filled with the type and size of seed you're going to plant. The connected 20/20 SeedSense® monitor precisely records the performance using your population and planting speeds. **You see the results!**

The meter is then adjusted – cleaned, balanced and repaired as necessary – and tested again, until all the errors are eliminated and your lost yield is restored. Past experience shows an average 5.7 bushel-per-acre improvement.

Here is data from independent field trials comparing calibrated and non-calibrated finger pick-up meters.

Pass #	Meter Status	# of points	Acres	Average BPA
1	non-calibrated	50	0.089	181.46
2	calibrated	53	0.090	193.11
3	calibrated	58	0.095	190.70
4	non-calibrated	89	0.152	184.29
5	non-calibrated	91	0.161	183.24
6	calibrated	98	0.164	192.08
7	calibrated	95	0.157	192.05
8	non-calibrated	142	0.223	184.52
9	non-calibrated	140	0.223	180.16
10	calibrated	150	0.221	183.61
11	non-calibrated	154	0.239	180.56
Average Non-calibrated				182.33
Calibrated				190.31
Calibrated Meter Advantage				7.98



"The best investment we have ever made is meter calibration....We wouldn't dream of going to the field without putting our meters on this test stand."

Don't put it off. See us today for a FREE meter evaluation and for the meter calibration that restores the yield you're losing now.



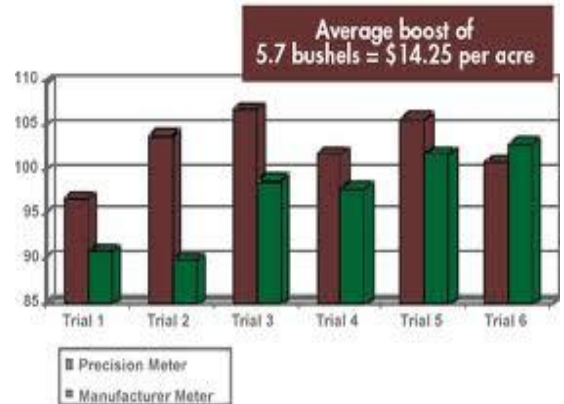
FINGER METERS



Precision Meters are engineered and built to do it again and again. Ordinary finger meters have a hard time doing that (singulating), especially with a wide variety of seeds. They'll miss one, then grab two, resulting in skips and doubles. That wastes seeds, robs yield and steals your money.

The key features of the Precision Meter are;

- Adjustable Brush**...allows fine tuning for different seed sizes and shapes.
- Precision Finger Set**...loads and holds a single seed due to tougher spring and properly formed flag.
- Population Max** backing plate...rigid so to stabilize the fingers.
- Skip Stop**...cushioning prevents the seed from ricocheting back into the seed pool.
- Sure Fire**...seed belt delivers the seed down the center of the tube increasing excellent seed spacing.



PART #	DESCRIPTION	PRICE	PRICE W/ TUBE
343022	7000 / EARLY KINZE	\$180.00 SALE	\$190.00 SALE
345030	KINZE 3000 SERIES	\$180.00 SALE	\$190.00 SALE
343025	JOHN DEERE 7200-1700	\$180.00 SALE	\$190.00 SALE



343022



343024



345030



BULLSEYE SEED TUBE
 -Reduces Seed Richocet
 -TUNGSTEN WEAR PINS
 -NO SENSOR INTERFERENCE



\$ 16.50 EA. SALE



343052



343110

METER REPLACEMENT PARTS

PART #	DESCRIPTION	PRICE
343052	METER BRUSH (ADJUSTABLE)	\$ 10.00 SALE
342110	"A" INSERT	\$ 7.50 SALE
342103	POP MAX BACKING PLATE	\$ 38.00 SALE
343029	FINGER SET	\$ 37.00 SALE
343066	SURE FIRE BELT	\$ 14.00 SALE
343024	SKIP STOP BACKING PLATE KIT	\$ 23.00 SALE
343014	SKIP STOP CUSHION	\$ 16.50 SALE

343029



343014



343024



343066

See Us For The Latest Advancements In Meter Calibration!





vSet Vac Meter



Choose higher accuracy, more flexibility and longer life.

While many prefer mechanical finger meters, many others are switching to vacuum meters – especially Precision Planting’s eSets – because they:

- Plant a wider variety of seed sizes and shapes
- Plant a wider variety of types of seeds with a simple disk change
- Plant at a wider range of speeds
- Have lower wear and less maintenance costs



Now, the new vSet vacuum meter system offers current finger meter users improved singulation, more convenience, longer wear life and greater seed flexibility. And Kinze EdgeVac® owners will appreciate vSet’s adjustment-free high performance.

Precision Planting’s eSet® system raised meter performance expectations to new new level of excellence; however, this system was limited to Deere vacuum meters. Now, with vSet, there is high performance, pour and go meter for a wider variety of planters allowing you to pair the right planter for your operation without sacrificing meter performance.



PLANTER CONVERSION OPTIONS AVAILABLE
FOR:
 -JOHN DEERE 7000-1700
 -KINZE
 -CASE IH 1200
 -WHITE 8000
CALL FOR CURRENT PRICING!



eSet Vac Meter Conversion

FOR JOHN DEERE LATE 7200-1700 VAC PLANTERS

Every Seed. Every Time!



The John Deere cell disc is very sensitive to seed shape because of the pocket. Only a few seed types fit perfectly in the pocket. That’s why you have to keep adjusting vacuum levels to try to suck most seeds against the pocket. With eSets flat disk design, there is not a pocket so flats, rounds, large and small work equally well.

The most frustrating thing about current vac disks is that you are always guessing about your vac setting. Too little and you skip. Too much and you double. But your monitor only shows you an average population – so you can’t judge accuracy until your seed emerges.

With eSet, you set your vac and you can plant any seed – even plateless – at 99% accuracy or better. If you seed is over 60# per 80,000 seed bag, use 18”. Size, weight, shape, treatments, humidity . . . doesn’t matter. And unlike early flat disk designs, you don’t adjust this singulator. It is designed to float and self correct so it is always in the right place at the right time.

- **Singulate any seed size or shape** — there’s no pocket or cell, which means the disk is not seed sensitive.
- **Improved seed release** — the raised platform means seeds release down the center of the seed tube minimizing seed tube ricochet.
- **No adjustments** — you get 99%+ singulation on almost every seed type without adjusting vac or double eliminators.
- **Better seed agitation** — seed treatments can inhibit singulation because seeds pack together at the bottom of the meter. eSet has aggressive seed agitation that keeps the seed pool fluid for better loading.



**720242 -STANDARD KIT
 W/ TUBE
 \$133.00 SALE**

**720136 -PRO SERIES
 KIT W/ TUBE
 \$147.00 SALE**



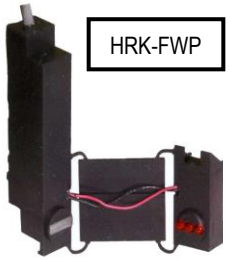
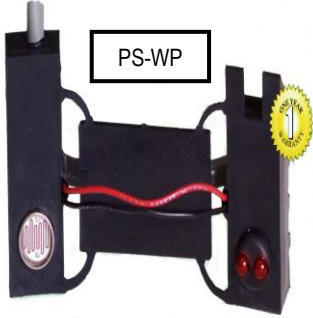
PLANTER SEED FLOW SENSOR



PART #	PLANTER	PRICE
PS-3W	JD7000-Early Kinze	\$ 59.00
PS-WP	JD7000-Early 7200	\$ 59.00
HRPS-WP	JD7200-1700-Kinze Early	\$ 79.50
HRK-FWP	Kinze 3000 Later(KPM)	\$ 129.00 SALE
APHR-3W	CASE IH CYCLOMETER II&III	\$85.00 SALE
HRDG-WP	JD/CASE IH/GP POP. SENSOR	\$85.00 SALE
DJ-CIHRSENSOR	CASE IH 1200 PLANTER	\$ 92.50 SALE



We Stock A Wide Selection Of Sensor Ends And Plugs!



PLANTER/DRILL POPULATION MONITOR KITS

COMPLETE HARNESS, MONITOR, AND SENSOR KIT.

REPLACE WORN SENSORS, HARNESS, AND ADD POPULATION CAPABILITY TO ANY ROW CROP PLANTING OPERATION!
PLEASE SPECIFY TONGE LENGTH, ROW SPACING, AND PLANTING WIDTH WHEN ORDERING!



PRICED WITHOUT SEED TUBES!



S1PMPOP-04SYS	4 ROW POPULATION KIT (W/GPS)	\$1695.00 SALE
S1PMPOP-06SYS	6 ROW POPULATION KIT (W/GPS)	\$1850.00 SALE
S1PMPOP-08SYS	8 ROW POPULATION KIT (W/ GPS)	\$1995.00 SALE
S1PMPOP-12SYS	12 ROW POPULATION KIT (W/GPS)	\$2395.00 SALE
S1DMPOP-O4SYS	4 ROW DRILL POPULATION KIT (W/GPS)	\$1695.00 SALE
S1DS-GPSM-D1	1 HZ. GPS RECIEVER (MAGNET MT.)	\$359.00 SALE
DS-GPSMD-1HZ	1HZ. GPS RECIEVER W/ SPEED READOUT	\$459.00 SALE



SEED TUBE BRUSH



\$ 10.95

Bring In Your Seed Sensors, And Monitor And We Can Test Them For Possible Issues.



NOTILL COULTER BLADES

PART #	DIAMETER	WAVE	APPLICATION	PRICE
M25IHC	14.9"	25 WAVE	CASE IH PLANTER/ WHITE	\$33.95 SALE
TPP K15YWS	15"	13 WAVE	WHITE 5100/KINZE	\$35.95
TPP845-9254	16"	13 WAVE	YETTER / KINZE	\$25.95 SALE
M2516YW	16"	25 WAVE	YETTER/GP/KINZE	\$32.95
M2516KDMW	16"	25 WAVE	ALL JD COULTERS	\$32.95
VT16DKDMWJDC	16"	VORTEX	JD 7000-1700	\$33.95
VT16MLOLC	16"	VORTEX	KINZE, YETTER, GP, WHITE	\$33.95
P16177MLOLC	16"	SMOOTH	KINZE/YETTER/WHITE	\$34.95 SALE
P16177DKDMWC	16"	SMOOTH	JD 5 HOLE/ OLD 7000	\$34.95 SALE
TPP W164001JDMC	16"	13 WAVE	JD 5 HOLE/ 7200 +	\$31.50
17157WFEC	17"	FLUTED	YETTER	\$32.50
VT17MLOLC	17"	VORTEX	YETTER/ GREAT PLAINS	\$42.00 SALE
TPP W174001DMI	17"	13 WAVE	TYE, MARLISS, DMI, BLUE JET	\$34.50
TPP W174001WFE	17"	13 WAVE	YETTER, GP, WHITE, CIH DRILL	\$34.50
N17177YMR	17"	KNOTCHED	YETTER/BLUE JET	\$35.50
M2517	17"	25 WAVE	BLUE JET, CIH, YETTER, GP	\$34.95
20450WPR	20"	SMOOTH	DMI, BLUE JET	\$42.50
20450WFE	20"	FLUTED	YETTER	\$35.50 SALE
20450DMI	20"	FLUTED	DMI, BLUE JET	\$35.50 SALE
VT20MLOL	20"	VORTEX	YETTER/ GREAT PLAINS	\$55.50 SALE

VORTEX

The latest advancement in coulters blade technology!
This blade is an excellent choice when being used on a planter ahead of a spiked closing wheel, or when additional stirring is needed. An excellent replacement for a "Turbo" type coulters.

VORTEX →



25 WAVE



25 WAVE

The 25 Wave coulters works a 5/8" wide strip in front of a trailing knife or nozzle application. This coulters is less likely to pull "Chunks" out like a 13 wave in wet soil.

FLUTED →



13 WAVE

The 13 Wave is the original coulters used by many O.E.M. manufactures. In most seeding conditions we feel this coulters has poor penetration and seed depth.

13 WAVE →



SMOOTH



COULTERS BEARING SETS



PART #	TO FIT:	PRICE
KB-7-ME	JD 7200-1700 No-Till/Fertilizer Opener(SET)	\$ 21.95
SAA 205-16	Kinze Double Arm Coulters (2 per Row)	\$ 9.95 Each
NT2901	Yetter No-Till/Fertilizer Coulters (SET)	\$ 21.95
B5206KPP3	Kinze 3000 Series-4 Bolt (1 per Row)	\$ 14.50
QC-633-1	DMI Hub Repair Kit	\$ 21.50



Other Bearings Available!

PLANTER / DRILL SEED DISC OPENERS

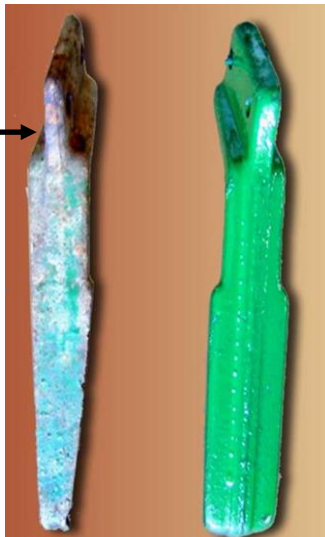


SIZE	THICKNESS	APPLICATION	BEARING TYPE	PRICE
13.5"	4.0 MM.	WHITE 5100/ GREAT PLAINS DRILL	205 HD W/ CAP AND BOLT	\$32.95 SALE
14"	3.5 MM.	CASE IH 800- 1200	LEADING 204 W/ DUST CAP	\$29.95 SALE
14"	3.5 MM.	CASE IH 800- 1200	TRAILING 204 W/ DUST CAP	\$29.95 SALE
14"	4.5 MM.	CASE IH 1250 (Update 955+)	DOUBLE ROW BEARING W/CAP	\$37.50 SALE
15"	3.5 MM.	KINZE 2000- 3700	KOYO OEM IMPORT 204 Bearing USA BLADE W/ DUST CAP TO FIT <u>KINZE</u>	\$24.95 SALE
15"	3.5 MM.	JD 7000-1770/ WHITE 6000- 8000	204 USA (Fafnir) Bearing W/ DUST CAP ALL USA COMPONENTS!	\$28.00 SALE
15"	3.5 MM.	JD 1750-1790 "XP" ----- HD OPTION FOR KINZE 3000 SERIES	DOUBLE ROW BEARING W/CAP (LAZER CHECKED FOR WOBBLE) OEM MANUFACTURE FOR JD PART# AA65248	\$34.00 SALE
16"	4 MM.	CRUST BUSTER 3400-4745	SMOOTH ----- KNOTCHED	\$21.00 SALE \$23.00 SALE

PLANTER MAINTENANCE TIPS:

- *Check your seed tube guards between the opener discs for proper operating width. A John Deere or Kinze planter should have a guard width measurement of no less than $\frac{1}{2}$ " at the bottom, and $\frac{3}{4}$ " across the top.
- *15" seed openers should be replaced at an overall diameter of 14.5".
- *There should be no more than 1.5" of contact between the openers for conventionally tilled planting.
- *In Notill planting conditions you should have a contact measurement of no more than 1.25" of contact between openers.
- *Torque opener nuts to no more than 110 ft. lbs.
- *Use an **equal amount** of shims on each side of the opener.

WORN SEED
TUBE GUARD!



FERTILIZER BLADES

Made With Boron Steel

<p>N17K To Fit KINZE 2000 17" NOTCHED</p>  <p>\$ 30.95</p>	<p>N17K3 To Fit KINZE 3000 17" NOTCHED</p>  <p>\$ 30.95</p>	<p>K16197D To Fit JD7200-Early JD1700 16" X 3/16" Center Hole 2 1/2"</p>  <p>\$ 32.50</p>	<p>K16197D17 To Fit Later JD1700 16" X 3/16" Center Hole 3 1/8"</p>  <p>\$ 33.50</p>
<p>K18197 (SQUARE BOLT HOLES) To Fit KINZE 18" X 3/16"</p>  <p>\$ 44.50</p>		<p>K20197K (SQUARE BOLT HOLES) To Fit KINZE 20" X 1/4"</p>  <p>\$ 48.50</p>	
<p>JD 16" SINGLE DISC FERTILIZER GAUGE WHEEL</p> <p>RIM-313-21-05.....\$ 11.95 TIRE-204036H, 3 X 13.25.....\$ 19.75 COMPLETE GAUGE WHEEL-31321H5A.....\$ 49.95</p>   		<p>DOUBLE DISC FERTILIZER OPENER -FITS 7000 JOHN DEERE FERTILIZER UNITS -HEAVY DUTY HUB W/OUT SPACER -13.5" BLADE</p>  <p>\$39.75</p>	

MOELLER AG FERTILIZER KNIFE

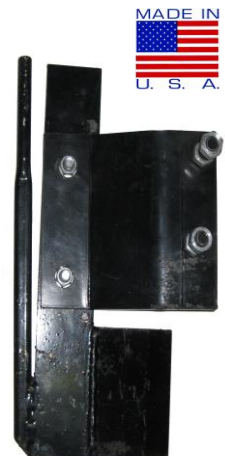
The MOELLER KNIFE replaces the original equipment shoe on the single disc fertilizer opener of JD7200 and later planters. The knife, which tucks up tightly against the disc blade, eliminates the crude adjustment bolt assembly on the old style shoe.

Using The MOELLER KNIFE Will Also Allow The Installation Of Martin's 1360 Floating Row Cleaner Around The No-Till Coulter On JD7200 And Later Planters Without Causing A Clearance Problem Between The Knife And The Row Cleaner Wheel.

**\$88.50
SALE**

GENERATION 1- EARLY 7200
GENERATION 2- EARLY 1700 THRU 2004
GENERATION 3- LATE 1700 2005 +

Moeller
AG SERVICE, INC.



Excellent Solution For Minimum Disturbance!

ROW UNIT PARTS

PART #	MAKE	MODEL	DESCRIPTION	PRICE
P61577	JD/KINZE	JD 7000/ 7200 EARLY 1700 KZ 2000-2600	SEED TUBE GAURD	\$ 9.25
P80203	JD	1750-1790 XP	SEED TUBE GAURD	\$ 9.95
P301	KZ	KINZE 3000 SERIES	SEED TUBE WEDGE	\$ 8.95
26443R	JD/KZ	JD 7000/ KZ 2000-3600	SCRAPER BLADE RIGHT BLACK OR GREEN	\$ 3.50
26444L	JD/KZ	JD 7000/ KZ 2000-3600	SCRAPER BLADE LEFT BLACK OR GREEN	\$ 3.50
P37221-K	JD	JD 7200-1700	ROTARY SCRAPER KIT	\$ 17.95
P37221	SEVERAL	SEVERAL	ROTARY SCRAPER WHEEL	\$ 3.95
P62559-K	JD	JD 7200-1700	TUNGSTEN SCRAPER KIT	\$ 28.95
P23789	JD/KZ	JD 7000/ KZ 2000-3600	PARALLEL ARM BUSHING	\$ 1.00
P48515	JD	JD 7200-1700 9/16" THICK	UPPER ARM BUSHING	\$ 1.95
P49465	JD	JD 7200-1700 21/64" THICK	LOWER REAR ARM BUSHING	\$ 1.95
P52556	JD/KZ	JD 7000/ KZ 2000-2600	CAM BUSHING FOR CLOSING FRAME	\$ 2.50
P48430	JD	JD 7200	RH CAM BUSHING FOR CLOSING FRAME	\$ 4.50
P48290	JD	JD 7200	LH SMOOTH BUSHING FOR CLOSING FRAME	\$ 3.75
P239/P282	KZ	KZ 3000 SER.	INNER AND OUTER BUSHING SET PER SIDE	\$ 4.60
P55888	JD	JD 1700 SERIES	CLOSING FRAME BUSHING	\$ 5.75
P254	KZ	KZ 3000 SER.	T-HANDLE FOR CLOSING FRAME	\$ 9.95
P64237	JD	JD 7200-1700	T-HANDLE FOR CLOSING FRAME	\$ 9.95
P31217	JD/KZ	JD 7000/ KZ 2000-2300	CLOSING FRAME	\$ 36.95
P37552	JD	JD 7200	CLOSING FRAME	\$ 45.75
P86763	JD	JD 1700 SERIES	CAST CLOSING FRAME	\$ 45.50
P8322	KZ	KZ 2500-3600	CLOSING FRAME	\$ 39.95
P23116	JD/KZ	JD 7000 KZ 2000-2300	CLOSING SPRING	\$ 11.95
P74643	JD	JD 7200-1700	CLOSING SPRING	\$ 9.95
P33879	JD/KZ	JD 7000 KZ 2000-2300	CLOSING WHEEL STOP	\$ 22.95
P53118	JD	JD 7200 1700 (NON XP)	CLOSING WHEEL STOP	\$ 25.50
P55889	JD	JD 1700 XP SERIES	CLOSING WHEEL STOP	\$ 28.50
GA2068	JD/KZ	JD7000 KZ 2000-2300	DOWN PRESSURE SPRING	\$ 13.50
P28970	JD	JD 7200-1700 XP	DOWN PRESSURE SPRING PACK	\$ 159.00

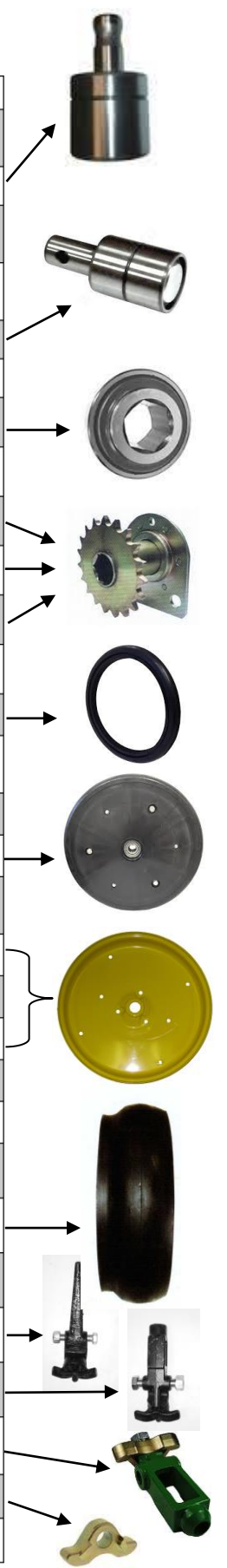
Stop By Our Store And Check Out Our Vast Selection Of Planter Parts, And See How We At R.E. Skillings Can Help Lower Your Bottom Line With Cost Effective Solutions!



ROW UNIT PARTS




PART #	MAKE	MODEL	DESCRIPTION	PRICE ea.
P35951B	JD/KZ	JD 7000/ KZ 2000-2300	1/4" CROSS HOLE BEARING FOR GAUGE WHEEL	\$ 10.25
P38106B	JD	JD 7200- EARLY 1700/ CIH	GROOVE STEM GAUGE WHEEL BEARING	\$ 10.95
5203KYY2IMP	JD/KZ/WHITE	JD 1700/ KZ 2500/ WHITE 8000	40 MM. GAUGE / CLOSING WHEEL BEARING	\$ 9.25
5203PYY2 OE	JD/KZ/WHITE	JD 1700/ KZ 2500/ WHITE 8000	40 MM. GAUGE / CLOSING WHEEL BEARING	\$ 13.75
885152	JD/KZ	JD 7000/ KZ 2000-2300	STEM CLOSING BEARING	\$ 6.50
5203TN1	JD	JD 7200	SINGLE CLOSING BEARING	\$ 11.90
205KRRB2	JD/KZ	JD 7000/ KZ	HEX BEARING TRANSMISSION AND DRIVE LINE	\$ 8.95
205KRR2	JD/KZ	SEVERAL	HEX BEARING TRANSMISSION AND DRIVE LINE	\$ 9.95
P30654	JD/KZ	JD 7000/ KZ 2000-2300	19 TOOTH ROW UNIT DRIVE SPROCKET WITH BEARING 9/16"	\$ 15.95
P36212	JD	JD 7200	19 TOOTH ROW UNIT DRIVE SPROCKET WITH BEARING 7/8" X 2 1/8" WIDE	\$ 16.50
P35645	JD	JD 1700	19 TOOTH ROW UNIT DRIVE SPROCKET WITH BEARING 7/8" X 2 1/2" WIDE	\$ 16.50
P35646	KINZE	KZ 2500+	7/8" HEX BORE BEARING FOR SEED DRIVE LESS SPROCKET	\$ 8.95
P22325	JD/KZ/WHITE	SEVERAL	RUBBER CLOSING TIRE ONLY	\$ 5.95
112PM-01	JD/KZ/WHITE	JD 1700 KZ 2500+ WHITE 8000	1X12 NYLON RIM HALF FOR CLOSING WHEEL	\$ 8.95
P43899	JD/KZ	JD 7000/ KZ 2000-2300	RUBBER CLOSING WHEEL ASSEMBLY	\$ 31.50
P43898	JD	JD 7200	RUBBER CLOSING WHEEL ASSEMBLY	\$ 31.95
P39968	JD/KZ/WHITE	JD 1700 KZ 2500+ WHITE 8000	RUBBER CLOSING WHEEL ASSEMBLY 40 MM.	\$ 33.95
416MY-01	JD	JD 7000 EARLY 7200	USA YELLOW GAUGE WHEEL RIM HALF	\$ 11.95
416MW-01	KINZE	KZ 2000 +	USA WHITE GAUGE WHEEL RIM HALF	\$ 11.95
416MB-01	JD	JD 7200 +	USA BLACK GAUGE WHEEL RIM HALF	\$ 11.95
416PL-01	JD	JD 1700	POLY OUTER RIM HALF	\$ 13.75
PRM-C	JD	JD 7200	POLY OUTER RIM COVER BLACK	\$ 9.50
H4515-JD	JD/KZ/WHITE	SEVERAL	GAUGE WHEEL TIRE O.E.M. REPLACEMENT	\$ 24.95 SALE
H4516-IH	CASE IH	SEVERAL	RID GAUGE TIRE WITH REDUCED INNER LIP	\$ 26.50 SALE
H4515-XP	JD	JD 1700 XP	XP GAUGE WHEEL TIRE O.E.M. REPLACEMENT	\$ 26.50 SALE
DM70	JD/KZ	JD 7000/ KZ 2000-2300	DEPTH-A-MATIC GAUGE WHEEL STOP	\$ 33.95 SALE
DM72	JD	JD 7200	DEPTH-A-MATIC GAUGE WHEEL STOP	\$ 42.95 SALE
P772K	JD	JD 1700 ALL	GAUGE WHEEL WALKING DEPTH CONTROL STOP	\$ 42.95
P609	JD	JD 1700 ALL	WALKING DEPTH ROCKER	\$ 13.95
P670	JD	JD 1700 ALL	WALKING DEPTH ROCKER BOLT	\$ 2.75



PLANTER / DRILL GAUGE WHEEL ASSEMBLIES

<p>#GW416102A</p> <ul style="list-style-type: none"> -Uses Stem Bearing with 1/4" Cross Hole -Fits all JD 7000's/JD 7200's thru 1991 and Kinze thru 1992 -2 Metal Rims (Yellow or Cream) <p>\$61.95 w/JD/Kinze Tire \$64.95 w/C-IH Tire</p> 	<p>#GW416102B</p> <ul style="list-style-type: none"> -Uses 40mm Bearing with 5/8" Hole -Fits Kinze after 1993 most Late 1700 Series -2 Metal Rims with Poly Cover -Black or White <p>\$65.50 w/JD/Kinze Tire \$69.50 w/C-IH Tire</p> 
<p>#GW416102C</p> <ul style="list-style-type: none"> -Uses Stem Bearing with Groove -Fits JD 7200 after 1991 -2 Metal Rims <p>\$61.95 w/JD/Kinze Tire \$64.95 w/C-IH Tire</p> 	<p>#GW416102E</p> <ul style="list-style-type: none"> -Fits 2006 and Later JD "XP" Planter -Fits 90 Series JD Drills -Uses 40mm. Bearing -2 Metal Rims W/ Poly Cover -"XP" Specific Tire <p>\$71.50</p> 
<p>#GW416102F</p> <p>C-IH PLANTERS</p> <ul style="list-style-type: none"> -Uses Stem Bearing <u>with Groove</u> -Fits 900 Planters -2 Metal Rims CIH Tire <p>\$ 69.95</p> 	<p>#GW416102D</p> <p>C-IH PLANTERS</p> <ul style="list-style-type: none"> -Uses Stem Bearing <u>with 1/4" hole</u> -Fits CIH 800 -2-White Metal Rims & 1-CIH Tire <p>\$69.95</p> 

 <p>#GW416102G</p> <ul style="list-style-type: none"> -FITS JD 1700 SERIES UP TO "XP" -2 METAL RIMS W/ POLY COVER <p>\$69.75</p> 	 <p>#GW416102H</p> <ul style="list-style-type: none"> -USES GROOVE STEM BEARING -NON "XP" GAUGE WHEEL TIRE <p>\$69.95</p> 
---	--

C-IH PLANTER/DRILL PARTS

COVERING DISC FOR PLANTERS

PART #	DESCRIPTION	PRICE
8IHCD	8" Planter Covering Disc W/ CAP	\$ 25.50
21651H8D	2.5" X 16" NARROW GAUGE WHEEL ASSEMBLY	\$ 52.50
IH4515	Recessed Inner Edge Tire USA	\$ 26.50 SALE
BSCW899	MARTIN 9" SPADED CLOSING WHEEL *(SOLD AS A PAIR)	\$ 117.00 SALE



Planter Gauge Wheel Repair Arms



- *ELIMINATES NEED FOR SHIMS.
- *SPINDLE DOES NOT ACT AS FULCRUM.
- *BUSHING CARRIES ARM LOAD.
- *GREASABLE HARDENED BUSHING

PART#	APPLICATION	PRICE
APQ2550	JD7000/KZ2000 EARLY JD 7200	\$25.50 EA. "SALE"
AP54179	JD7200/ EARLY 1700 NON-XP	\$25.50 EA. "SALE"
AP6114	KINZE 2500-2600	\$26.50 EA. "SALE"
AP79648	JD 1700 "XP"	\$26.50 EA. "SALE"
P41968B BUSHING P54179B BUSHING	1" SPINDLE 5/8" BOLT STYLE	\$ 8.95 EA. "SALE"



Closing Frame Update Kits

JD 7200 / 1700 SERIES

*Converts To Bolt On Closing Wheels.

*New Knuckle, Cast Closing Frame, Spring And Handle.



\$ 99.00 SALE

KINZE 2000-3000 SER. / JD 7000

*Converts To Bolt On Closing Wheels.

*New Knuckle, Closing Frame, Spring And Handle.



\$ 79.95 SALE

NOTCHED MARKER DISC ASSEMBLY

9 Notch, 13" Diameter

PART #	DESCRIPTION	PRICE
AP 430000	NOTCHED MARKER DISC ASSEMBLY	\$ 84.50 SALE
AP 201113	Replacement Blade for Marker Disc	\$ 26.50 EA.
AP 299054	Bearing for Hub on Marker Disc	\$ 24.95 EA.
SM125MW	Marker Weight For Various Hub Applications. Please specify use when ordering	\$ 30.00 EA. SALE



GREAT FOR NO-TILL!

NO-TILL DOWN PRESSURE SPRINGS/ OEM AIR BAGS

PART #	SPRINGS TO FIT:	PRICE
FAB1071HD	JD7000/Early Kinze	\$ 13.50
GD8249	Kinze	\$ 9.95
FABP43609	JD 7200	\$ 10.95
2960-373	Yetter	\$ 16.95
	AIR BAGS TO FIT:	
AA73942	JD MAX /PRO /XP	\$ 95.50 "SALE"
AA71437	JD 1790/ 1770NT/ 1700/ XP PRO SERIES	\$ 82.50 "SALE"
GA11982	KINZE 3500/ 3600/ 3660/ 3700	\$ 69.50 "SALE"

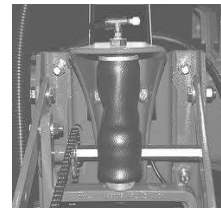


JD 7000

KINZE

YETTER

JD 7200



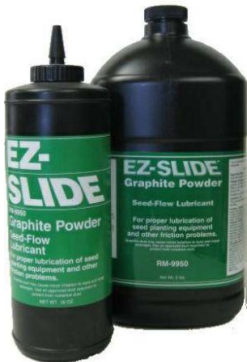
AA73942

AA71437

GA11982

SEED FLOW LUBRICANTS "EZ-SLIDE" GRAPHITE

- Maximizes yield and profit by increasing plant population per acre.
- Easiest, most economical way to apply seed flow lubricant. No buildup.
- Reduces wear on planter plates.



PART #	TYPE	SIZE	PRICE
EZ19004	Talc	40 Lb Box	\$ 69.00 Best Value!
EZ19000	Talc	8 Lb Jug	\$ 19.75
EZS 9950	Graphite	1 Pound Bottle	\$ 5.50
EZD 9950	Graphite	5 Pound Jug	\$ 19.95
EZ 0901-8	80/20 Mix	8 lb. Jug	\$ 22.95 SALE
EZ 0901-4	80/20 Mix	40 lb. Box	\$ 72.00 Best Value!



PRECISION eFLOW

This special blend of talc and graphite improves seed loading and seed release – and that improves seed spacing. eFlow improves the flow of seed from the hopper to the meter. In the meter, eFlow ensures that seeds release consistently once the vac is shut off and seeds drop to the seed tube. The addition of graphite, especially in smaller seeds, helps seeds slide off the disk like clockwork. Just **mix ¼ cup of eFlow per 80,000 seeds**. On large seeds, 60# or more per 80,000 seeds, reduce the rate to 1/8 cup. eFlow is available in a convenient 8# jug. That's enough to lubricate 130 units of seed corn. We've also developed a clean and convenient measuring lid that fits the eFlow jug. The lid meters 1/8 cup of eFlow with each turn of a handle – two turns equals ¼ cup delivered directly into the hopper. Treated seeds with a rough coating may need more eFlow.

Don't exceed the recommended amounts. Too much talc can inhibit seed flow – especially in high humidity. Watch for talc or eFlow accumulations at the bottom of the seed hopper or meter.



PLANTER CHAINS

- Roller Chains
- 50' Rolls
- Stainless Roller Chain
- Pre-Cut Planter Chain

ROLLER CHAIN-USA

Size	Price per 10'	Conn. Link	Offset Link
RC41	\$ 57.75 Sale	\$ 1.95	-----
RC40	\$ 52.50 Sale	\$ 2.10	\$ 2.95
RC2040	\$ 67.50	\$ 2.95	\$ 4.25
RC2050	\$ 57.50	\$ 3.50	\$ 4.75



RC41-50 50' - Price \$ 239.75 SALE

ROLLER CHAIN-Imported

Size	Price per 10'	Conn. Link	Offset Link
41	\$ 16.75	\$ 1.40	\$ 1.75
40	\$ 19.50	\$ 1.60	\$ 1.90
2040	\$ 21.50	\$ 2.25	\$ 2.95
2050	\$ 27.50	\$ 2.50	\$ 3.95

MEETS ANSI SPECS!



50 FOOT ROLLS-Imported

PART #	LENGTH	PRICE
#41	50' Roll	\$ 78.50
#40	50' Roll	\$ 92.50
#2050	50' Roll	\$ 110.00



Stainless Roller Chain

PART #	LENGTH	PRICE
#50SS	10' Roll	\$ 94.50
#60SS	10' Roll	\$ 189.75

PRE-CUT PLANTER CHAINS-Imported

PART #	PRE-CUT PLANTER CHAINS	SIZE	LINKS	PRICE
A9841	JD7000/Kinze Finger Pickup Seed Drive	#41	98 Links	\$ 7.75
RC41112	JD7200-1700 Vac Meter/ kinze 3000	#41	112 Links	\$ 8.95
A10241	JD7200-1700 Finger Pickup Chains	#41	103 Links	\$ 8.25
A205056	JD7000 Wheel Drive, 8 Row, 12 Row	#2050	56 Links	\$ 17.95
A41102	JD7200-1700 Finger Pickup Seed Drive	#41	102 Links	\$ 7.95
A209053	JD7000 Wheel Drive	#2050	53 Links	\$ 14.95
P22372	JD7000/Kinze, 6W, 8N, 12 Row	#2050	55 Links	\$ 15.95
P37881	JD7000/Kinze, 4W, 4N, 6 Row	#2050	51 Links	\$ 14.50
P43718	Kinze Seed Drive Pusher Unit (RC41113)/ JD INSECTICIDE/ VAC METER	#41	113 Links	\$ 8.95

A COMPLETE CHAIN LIST IS ON PAGE 68.