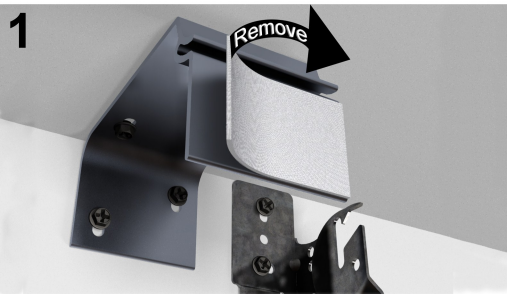


# FASCIA INSTALLATION INSTRUCTIONS



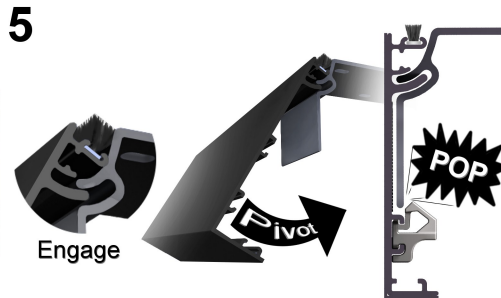
If you are installing a new fascia, skip to step 2. Otherwise, remove existing fascia. Remove velcro from fascia brackets using pliers. Remove left over adhesive from brackets. Now, skip to step 3.



Apply fascia installation instruction sticker to inside of fascia as shown.



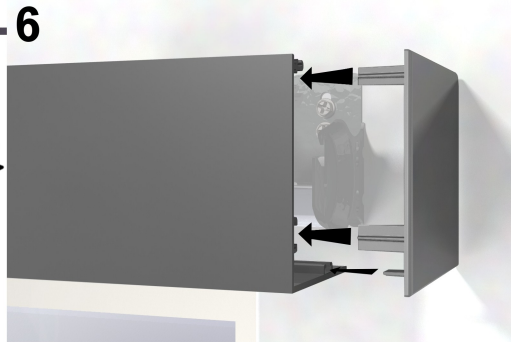
Mount fascia brackets two (2) inches inward from shade brackets' far edge, and so that fascia and shade brackets are aligned at both top and back. Use two (2) screws in jamb or wall, opposite each other as shown.\*



Install fascia by engaging fascia tongue into bracket groove, then pivoting fascia toward bracket until you hear both clips "POP!"



Slide fascia clips into groove and center each clip in middle of each velcro as shown. Ensure clips are aligned to fascia brackets prior to installation.



For outside mount fascias, insert tabs of endcap into retaining features on fascia.

\*If screws do not secure to sufficient wall structure, use appropriate wall anchors (not included).