

**BERMONT FORMATION (Early  
– Middle PLEISTOCENE)  
MICROFOSSILS From The Big  
Island Quarry, Northern Collier  
County, FLORIDA**



**John E. B. Baker, *mikrogeo.com***

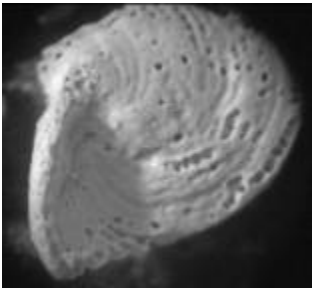
*Bermont Fm, Early to Middle Pleistocene, Big Island Quarry, Collier County, FL: Pt I. Foraminifera-*



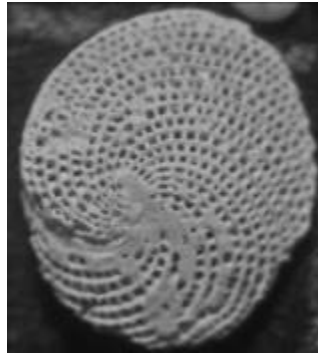
*Articulina sagra*



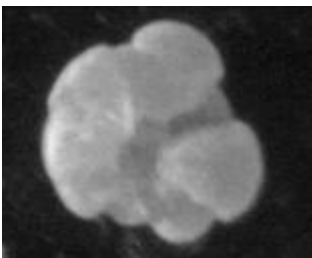
*Articulina sagra*



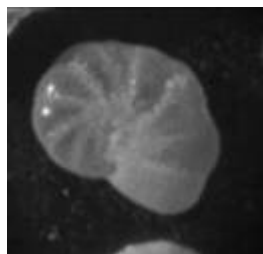
*Archais angulatus*



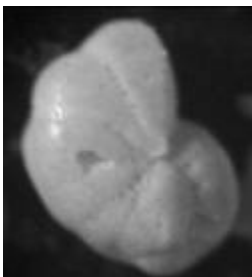
*A. angulatus*



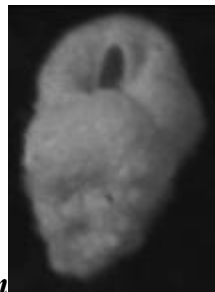
*Tretomphalus atlanticus*



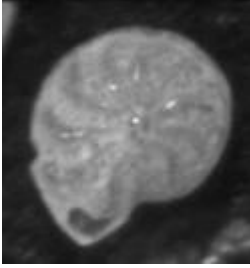
*Cribroelphidium*



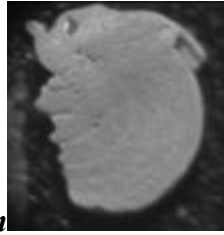
*Cribroelphidium poeyanum*



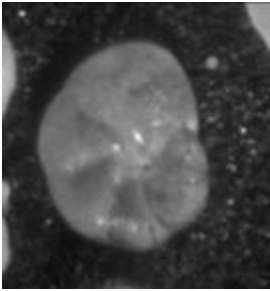
*Valvulina oviedoiana*



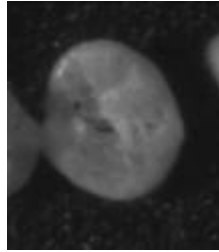
*Elphidium fimbriatulum*



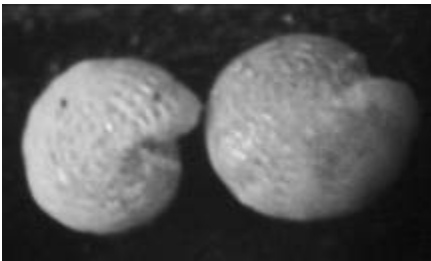
*Peneroplis bradyi*



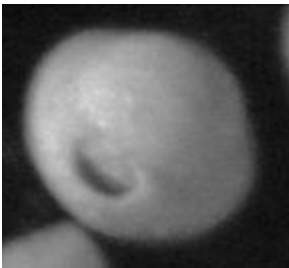
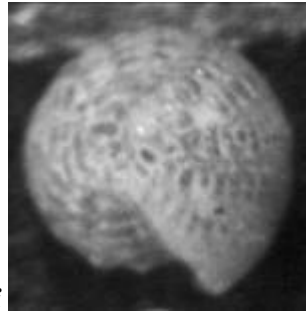
*Rosalina subaraucana*



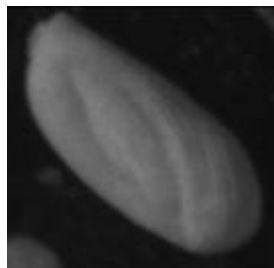
*R. floridensis*



*Elphidium gunteri*



*Pyrgo murrhina*



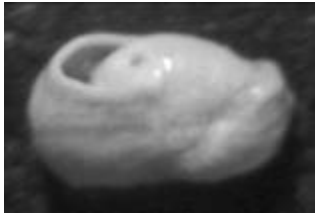
*Quinqueloculina poeyana*



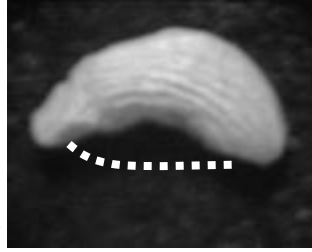
*Q. lamarckiana*



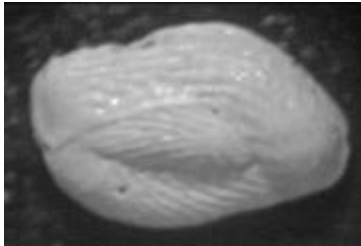
*Q. bicostata*



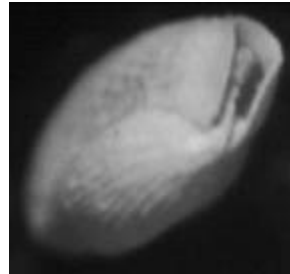
*Triloculia sidebottomi*



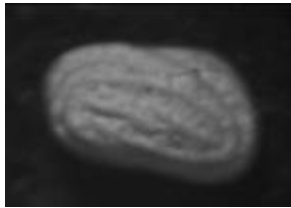
*T. linneiana*



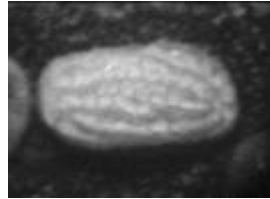
*T. carinata*



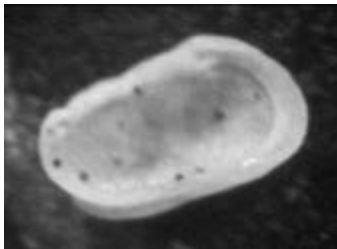
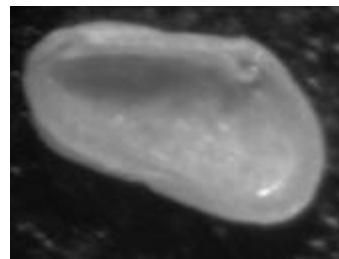
## Pt II. Ostracods



*Climacoidea pleurata*

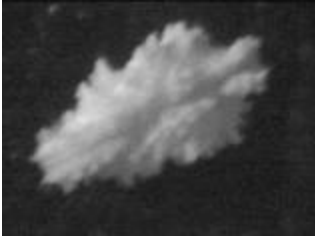


*Climacoidea pleurata*

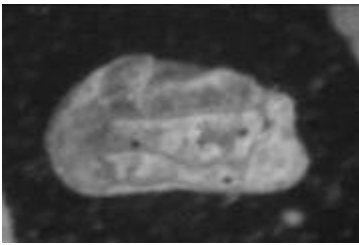
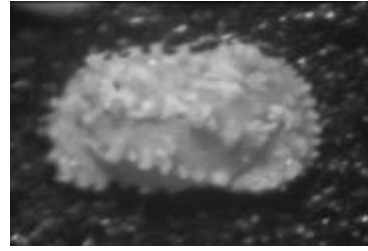


*Climacoidea pleurata*

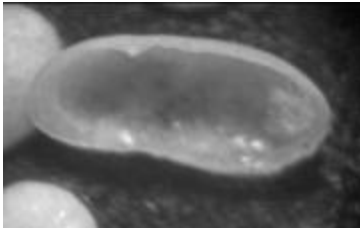
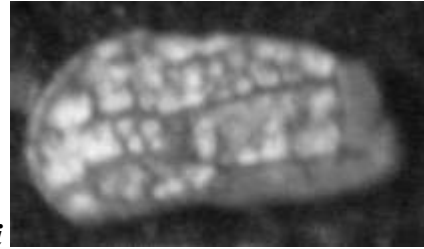




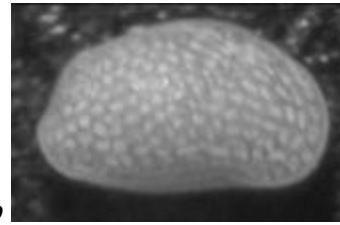
*Actinocythereis captionis*



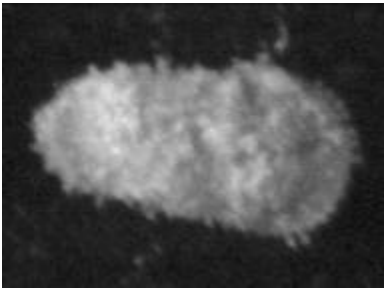
*Orionina vaughani*



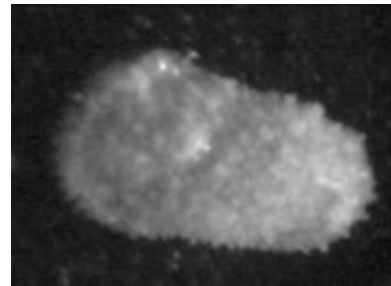
*Pontocythere sp*



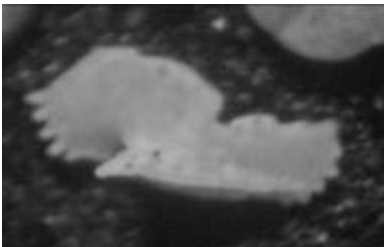
*Aurila sp*



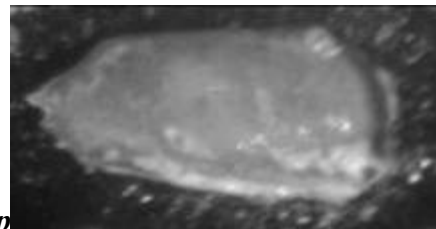
*Henryhowella sp*

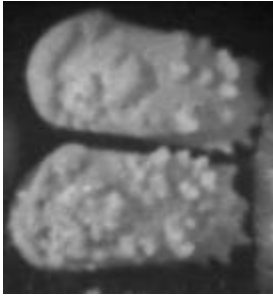


*Macrocyprina propinqua*

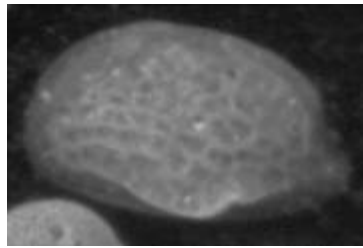


*Pterygocythereis sp*

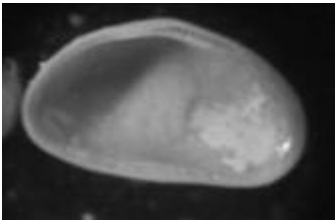




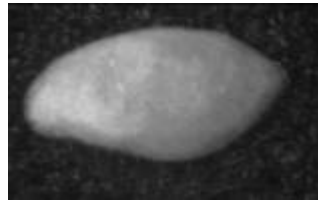
*Puriana floridana*



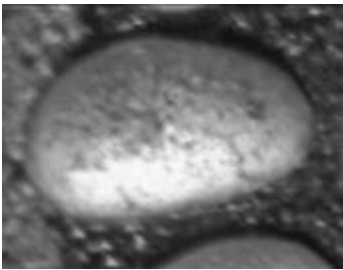
*Malzella conradi*



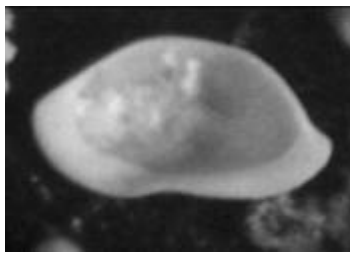
*Peratocytheridea setipunctata*



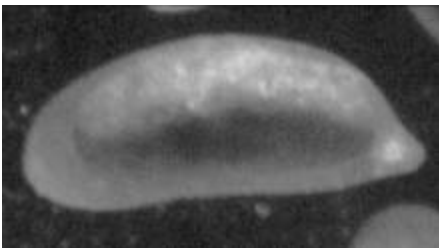
*Pellucistoma magniventra*



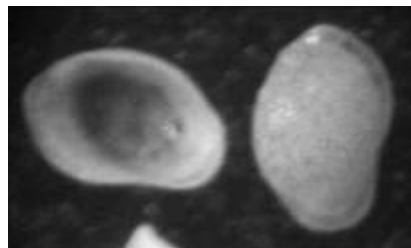
*Cyprideis sp 1*



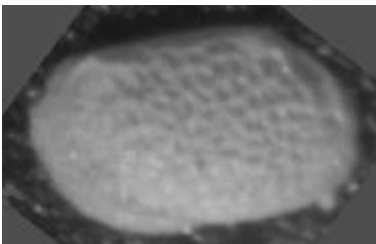
*Bairdoppilata sp*



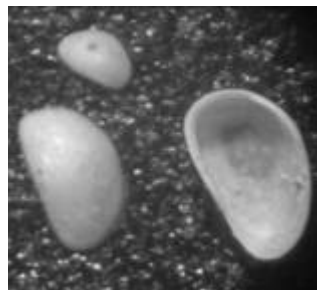
*Hulingsina sp*



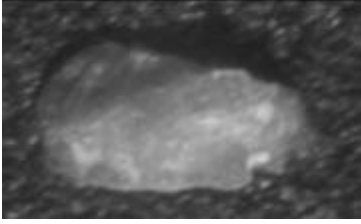
*Loxoconcha matagordensis*



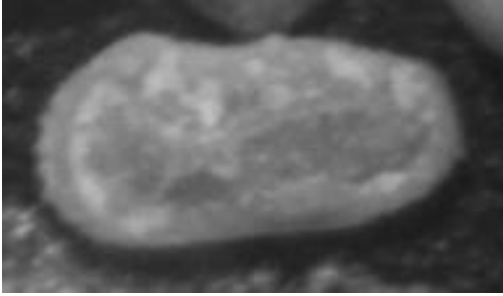
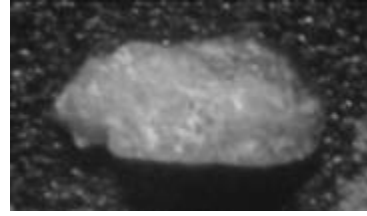
*Loxoconcha suboculocrista*



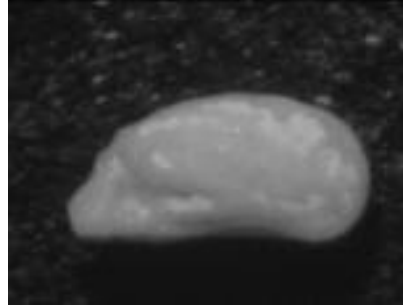
*Xestoleberis sp*



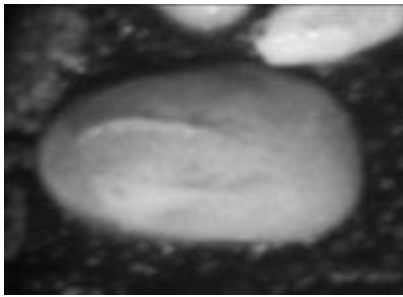
*Paracytheridea hazeli*



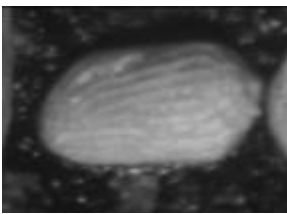
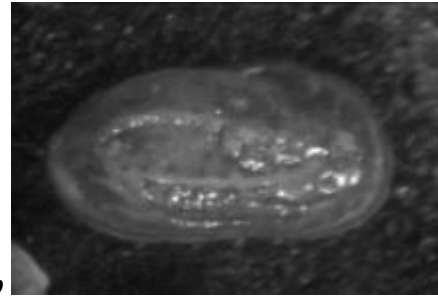
*Neocaudites angulata*



*Caudites parasymmetricus* ♂



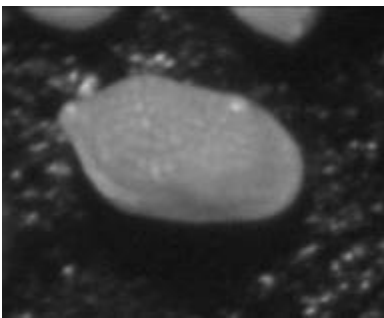
*Protocytheretta* sp



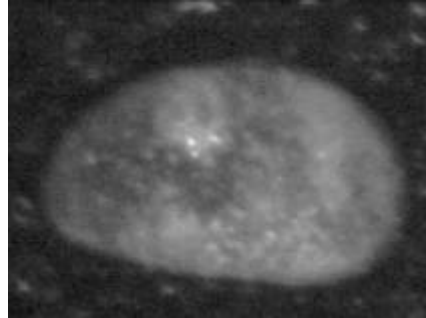
*Cytherura wardensis*



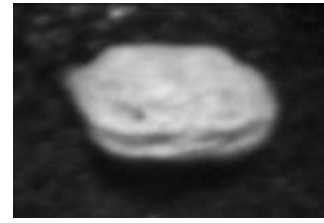
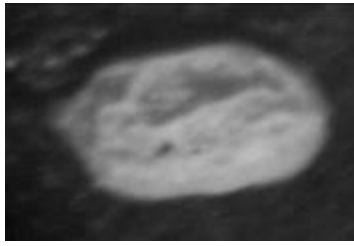
*Orionina vaughani*



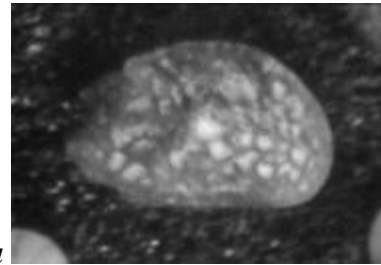
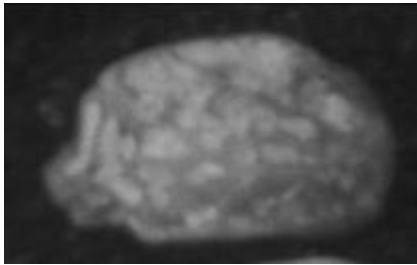
*C. valentini*



*Cyprideis* sp2



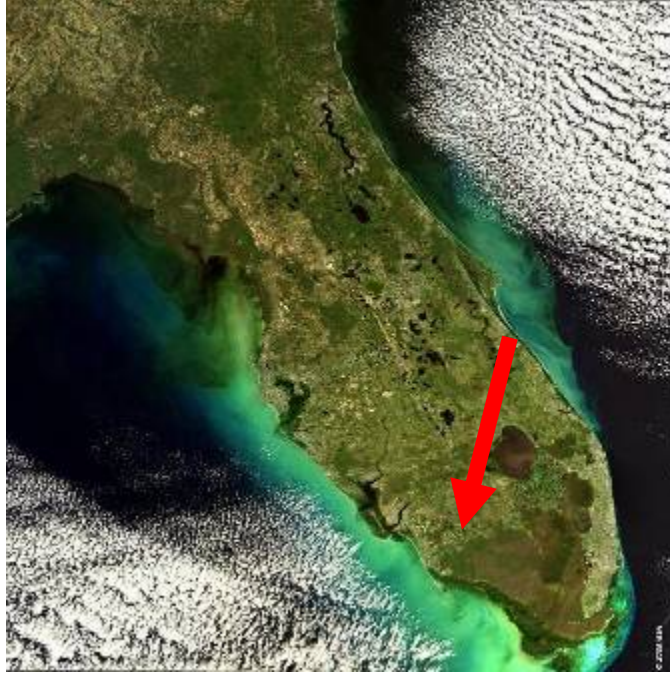
*Cytherura pseudostrata*



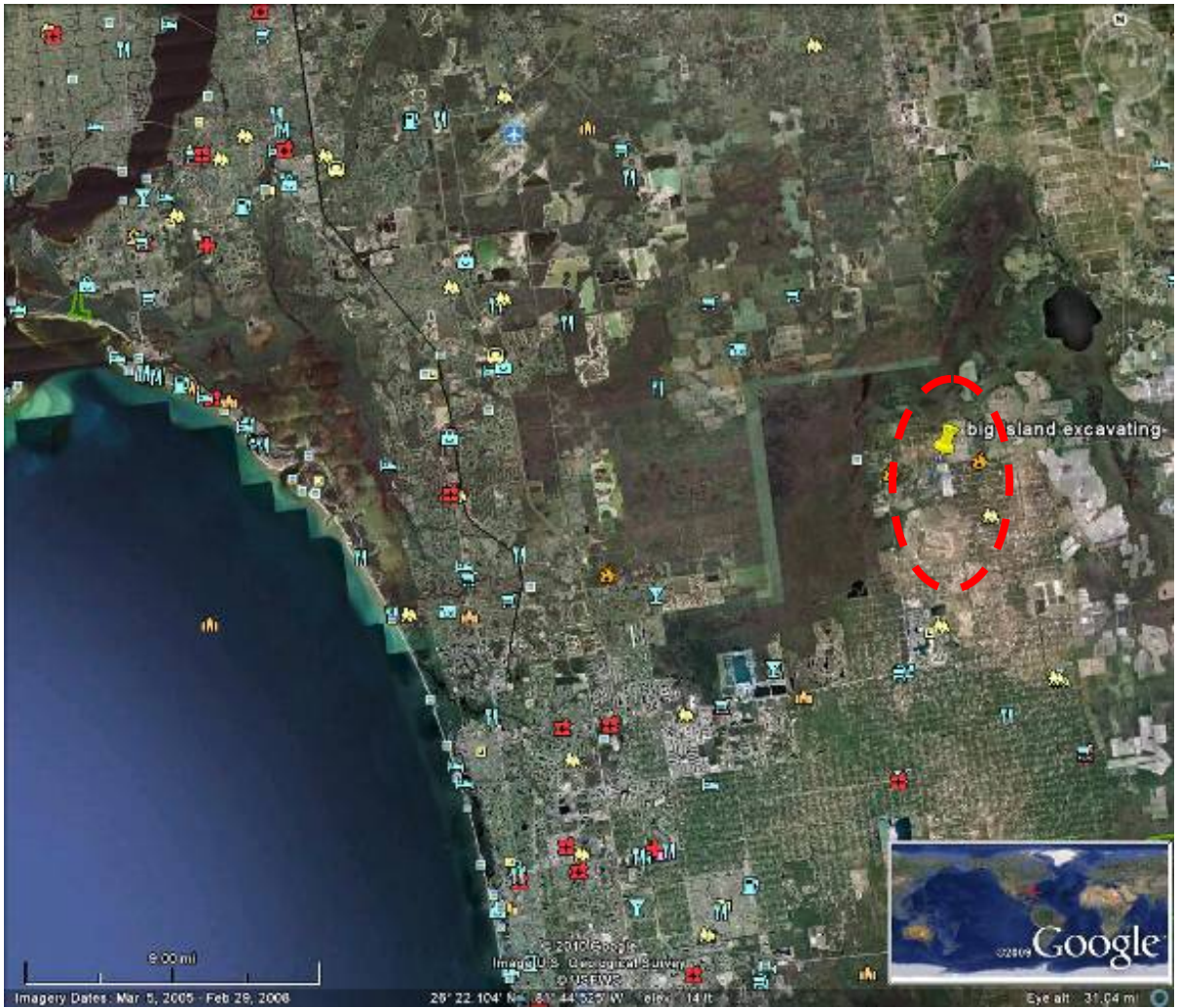
*Radimella confragosa*

**Conclusion:** A shallow water, normal (*Ammonia / Elphidium* Ratio is very low) marine (Salinity = ~35 ‰ inner shelf) fauna. Based on small, individual heads of corals (*Solenastrea, Porites & Diploria*- no true reef-but a 'back-reef lagoon' environment ) some *Halimeda* fragments and a number of forams and ostracods which are *Thalassia* epiphytes today, this was a 'turtle-grass' (*Thalassia* ) bed during a eustatic marine transgression which formed in an early to mid Pleistocene interglacial period. The temperature was tropical, similar to today and possibly warmer. The environment was very similar to today's Florida Bay, now 200 km south.





*Big Island Quarry, northern Collier Co., ~9 mi. SW of Immokalee on Immokalee Rd*

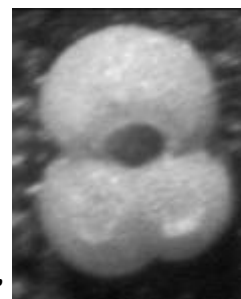


<i>MY</i>	<i>POLARITY</i>	<i>EPOCH</i>	<i>AGE</i>	<i>LARGE MET IMPACTS</i>
0 0.1 0.2 <i>BRUNHES</i> 0.3 0.4		Late Pleistocene	Holocene Late	<10,000
0.5 0.6 0.7 0.8				
0.9 1 <i>M</i> 1.1 <i>A</i> 1.2 <i>T</i> 1.3		Early Pleistocene	Early	
<i>U</i> 1.4 <i>Y</i> 1.5 <i>A</i> 1.6 <i>M</i> 1.7 <i>A</i> 1.8				
1.9 2 2.1 2.2 2.3 2.4 2.5		Late	<i>G</i> <i>a</i> <i>l</i> <i>e</i> <i>s</i> <i>i</i> <i>a</i> <i>n</i>	<i>Eltanin Impact</i>

**General age of Bermont Formation: Yarmouth Interglacial ?**



*Globigerinoides ruber*



A planktonic foraminifera found in the Bermont Fm.