

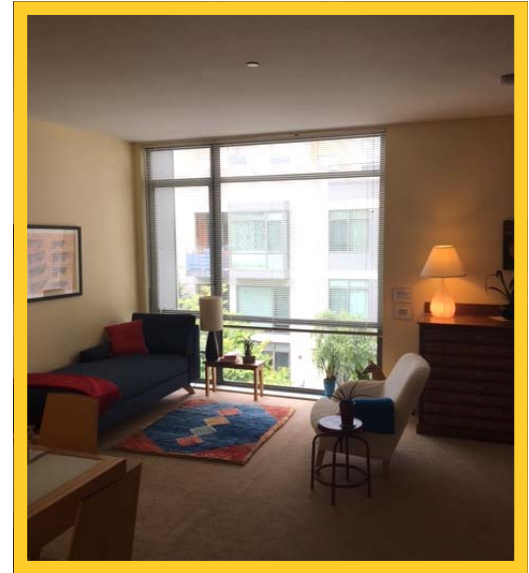
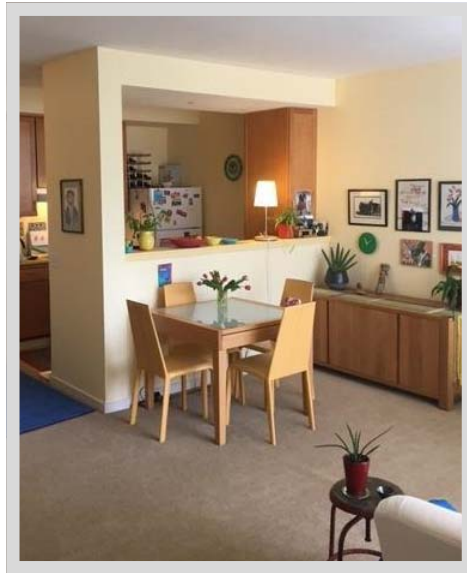
WATERFRONT BMR IN MISSION BAY

335 BERRY ST #401 | SF | CA | 94158

\$301,119 | HOA \$419.19 +* \$33.75 | 1bd/1ba | 681 SQFT | BUILT 2009

Below Market Rate (BMR) unit at the modern Mission Walk. Spacious open unit with easy access to shoreline, ball park, transit, and has waterfront views. * *Monthly Mission Bay Community Enhancement Fee*

OPEN HOUSES:
WED 08/09/17 5-7PM
SUN 08/13/17 1-4PM
SUN 08/20/17 1-4PM



**APPLICATION
DUE**

TUE 08/25/17 | 5PM | **HOMEQUEST REALTY**
5517 GEARY BLVD #206 | SF | CA | 94121

**LOTTERY HELD
ON**

TUE 09/05/17 | 3PM | SFMOHCD*
1 SOUTH VAN NESS 5FL | SF | CA | 94103



Rob Belli | BRE#01913570 | rob@hquestrealty.com | 415.317.8540 | hqrealtysf.com

Studio Unit Below Market Rate (BMR) housing opportunity available at **101% Area Median Income (AMI)**. Maximum income for 1 person = \$81,507; 2 = \$93,173; 3 = \$104,788, etc. Must be 1st-time homebuyer & income eligible. Unit available thru the *San Francisco Mayor's Office of Housing and Community Development (MOHCD) & subject to resale controls, monitoring & other restrictions. Visit www.sfmohcd.org for application & program info. Fair Housing Opportunity.

THIS INFORMATION CONTAINED HEREIN HAS BEEN PROVIDED BY VARIOUS SOURCES WHICH MAY INCLUDE THE SELLER, PUBLIC RECORDS, MULTIPLE LISTINGS SERVICE, & OTHERS. HOMEQUEST REALTY HAS NOT INVESTIGATED OR VERIFIED THE ACCURACY OF THIS INFORMATION. PROSPECTIVE BUYERS ARE ADVISED TO CONDUCT THEIR OWN INVESTIGATION OF THE PROPERTY & THE INFORMATION CONTAINED HEREIN UTILIZING LICENSED PROFESSIONALS BEFORE PURCHASING THE PROPERTY.