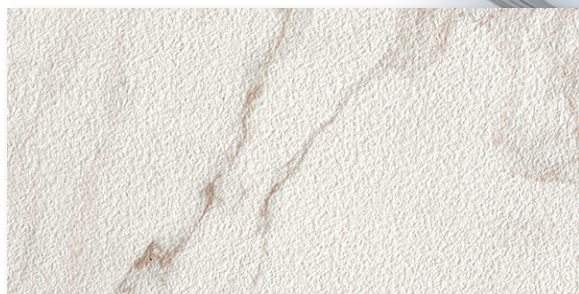


FIELD TILE



Forte



Pietra Santa



Shown: Pietra Santa 12x24

SPECIFICATIONS

Application	Floor
Visual	Marble
Type	H.D.I.T. Rectified Porcelain
Slip Resistant	Yes
PEI Rating	5
Frost Resistant	Yes
Shade Variation	Moderate/High
Screens/Faces	Forte (40), Pietra Santa (60)

SIZES



12x24 Textured Outdoor



Note: Manufacturer does not recommend installing large format rectangular tile using a 50% staggered brick/running bond grout joint pattern. Joint locations can be random and should be positioned to be no less than 30% the length of the adjacent tile. Alternating joints so they are <30%, a straight-lay or herringbone patterns are acceptable and with grout joint sizes of 1/4" to 3/16" but no less than 1/8".