

Distributed by:

WATER CONTROLS
& PUMP SYSTEMS
808-876-0132 www.watercontrols.com



MUNICIPAL MODULAR BOOSTER STATION

MEETING YOUR WATER FLOW NEEDS
ONE PUMP AT A TIME



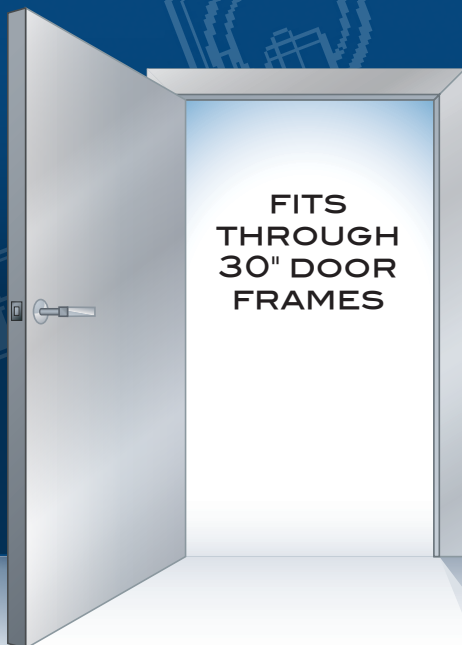
A MODULAR SOLUTION:

The Municipal Modular Booster Station solves many of the problems that have historically faced large-scale building and municipal projects. It is unique in that it is entirely built, assembled, and tested before leaving our factory, unlike many other systems that are commonly stick-built or assembled on-site. Our system arrives at your facility ready to run, often installed and fully functional within a matter of hours.

The modular system allows you to add additional pump units if your water needs increase. With individual pump capabilities of up to 600 GPM and 800 TDH by utilizing 1 to 4 pumps, the Modular Booster System meets virtually any demand.

Working with a “single-source supplier” provides greater accountability and fewer headaches. You have one reliable point of contact for delivery, startup and service.

The Municipal Modular Booster Station – the most practical solution for your municipal pumping needs – for today and the future.



DISTINCTIVE FEATURES:



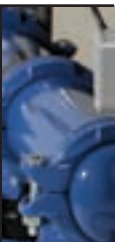
EASY-TO-USE CONTROL PANEL

with touchscreen operator interface for advanced management and control capabilities.



FLOW SENSOR

provides flow data to control panel for accurate sequencing and reporting.





MODULAR CONSTRUCTION
for easier installation, reduced vibration,
and ability to add on modular pump
units as needed.

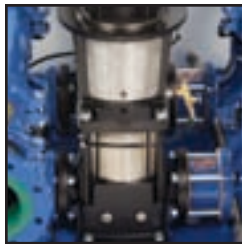
SAFE DRINKING WATER
ANSI / NSF Standard 61 compliance on
all internal wetted parts and coatings.

AWWA / NSF 61-RATED
fusion-bonded epoxy coatings on
all wetted surfaces for potable
water applications.

SCADA-READY SYSTEM
integrates with building management
controls and provides critical station
operation data.



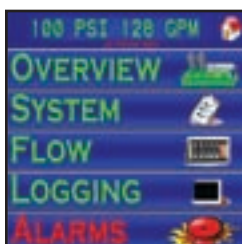
DEDICATED VFD PER PUMP
saves energy by providing efficient
motor control and precise pressure
management, while reducing the
harmful effects of hydraulic surge.



CERTIFIED PUMPS
ANSI/NSF Standard 61 stainless
steel certified pumps ensure the
highest quality drinking water for
your system.



**INTAKE/DISCHARGE
PRESSURE TRANSDUCERS**
measures the inlet/discharge pressure,
providing precise system control with
full-color touchscreen display.



SAFETIES & ALARMS
advanced alarm algorithms
provide total system protection
while maximizing station up-time.

WHY WATERTRONICS?

A leader through experience, Watertronics has built over 3,000 pump stations.

All Watertronics pump stations are “test driven” at the factory and not on the job site, to provide assurance and confidence that your pump station will perform exactly as promised.

Pump Service Network (PSN) is a worldwide network of factory-trained and certified independent service technicians. These expert service providers are available locally 24 hours a day and are fully supported by Watertronics’ knowledgeable and caring staff.

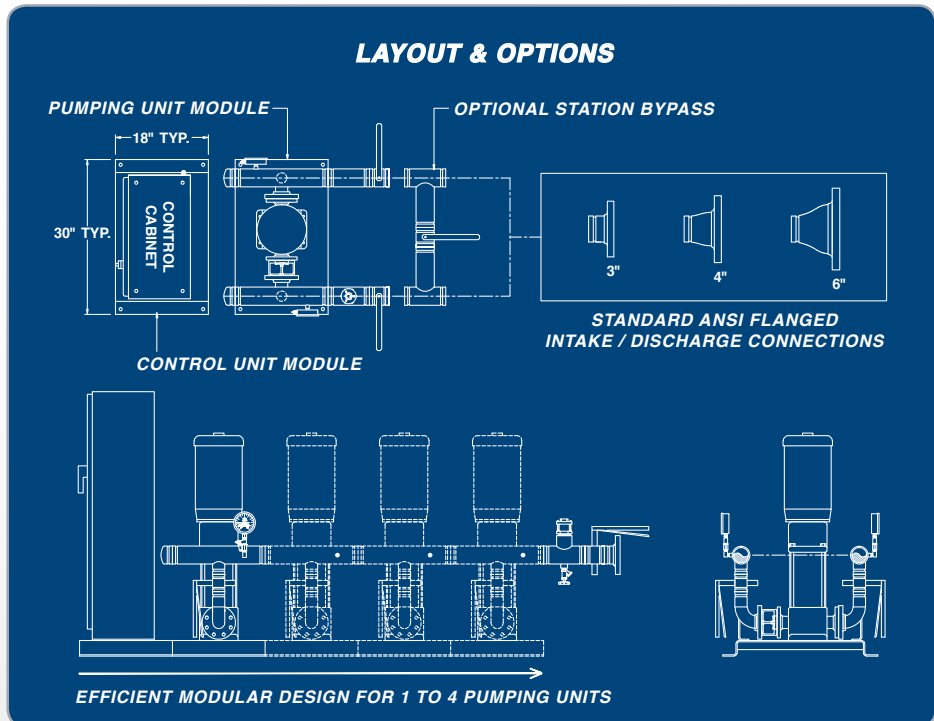
Rapid 3 to 4 week delivery times available on most modular units.

CUSTOM APPLICATIONS

Watertronics provides fully customized engineered-to-order pump stations for any municipal application. Please call Watertronics directly for more information on designing or quoting your next custom application. No project is too large or small.

AVAILABLE OPTIONS

- Electronic Butterfly Valve (EBV) for back up pressure control in event of VFD failure and automatic system isolation in event of pipeline break.
- Full range of station enclosures and walk-in buildings including fiberglass, stainless steel, aluminum and composite materials for all shapes and sizes.
- 100% stainless steel piping, with potable-water-blue coating.



Add Modular Booster Station units as your pumping requirements increase.



Inner-workings of control panel are organized and accessible for easier maintenance and servicing. All Watertronics Control Panels are UL-listed.